

shadac NEWSLETTER

STATE HEALTH ACCESS DATA ASSISTANCE CENTER

2017 Fall Data Release Review

October 2017: Over the last month, we've seen the release of insurance coverage estimates from the 2016 American Community Survey (ACS), the 2016 Current Population Survey (CPS), and the first-quarter 2017 National Health Interview Survey (NHIS). SHADAC has been actively tracking these releases and interpreting the new numbers to increase their accessibility. The following are highlights and resources from SHADAC's data release monitoring activities.

Data Release Highlights

Webinar Recording Available: SHADAC and Census Bureau Experts Discuss New Health Insurance Data from the ACS and CPS

During SHADAC's [annual data release webinar](#) on September 19th, U.S. Census Bureau experts Jennifer Cheeseman Day and Marina Vornovitsky provided an overview of 2016 health insurance data from the [American Community Survey](#) (ACS) and the [Current Population Survey](#) (CPS). Drs. Day and Vornovitsky, with SHADAC Senior Research Fellow Joanna Turner, discussed the new national and state coverage estimates, how to access estimates via Census reports and [American FactFinder](#), and how to use estimates from each survey. [Access the webinar slides, recording, and supporting materials here.](#)

Brief: Comparing Federal Government Surveys That Count the Uninsured (2017 Update)

The 2017 update to SHADAC's annual brief, "[Comparing Federal Government Surveys That Count the Uninsured](#)," is now available. In this brief, SHADAC researchers present current and historical national estimates of uninsurance along with the most recent available state-level estimates from four federal surveys: The [American Community Survey](#) (ACS), the [Current Population Survey](#) (CPS), the [Medical Expenditure Panel Survey – Household Component](#) (MEPS-HC), and the [National Health Interview Survey](#) (NHIS). Estimates for point-in-time and full-year uninsurance from these surveys are available in national and 50-state comparison tables. We also discuss the main reasons for variation in the estimates across the surveys.

New Tables and Maps Show State and County Uninsured Estimates for 2016, with Comparison Year 2015

SHADAC produced [tables of state and county uninsured estimates for 2016](#) from the [American Community Survey](#) (ACS) using the [American FactFinder](#) tool from the [U.S. Census Bureau](#). The tables provide uninsured rates by characteristics (such as age, race/ethnicity, and poverty level) for both 2016 and comparison year 2015 for each state, as well as uninsured rates by age for all counties within each state that have a population greater than 65,000. [Also available](#) are national maps and tables of additional 2015 and 2016 estimates, including private and public coverage rates by state and uninsurance rates by state.

Coming Soon: 5-Year State and County Uninsured Estimates, 2012–2016

In December, SHADAC will release 5-year estimates of uninsurance from the [American Community Survey](#) (ACS) for the pooled years 2012–2016 for all states and counties. The 5-year ACS is created by pooling together five years of ACS data to produce estimates for areas and subgroups with smaller populations. Tables will provide state-level uninsured rates for several characteristics (such as age, race/ethnicity, and poverty level) for each state, along with county-level uninsured rates by age for all counties in each state. A 50-state comparison table will also be available. [Review the 5-year estimates for 2011–2015 here.](#)

Resources: Understanding and Exploring the New Estimates

On the SHADAC Blog

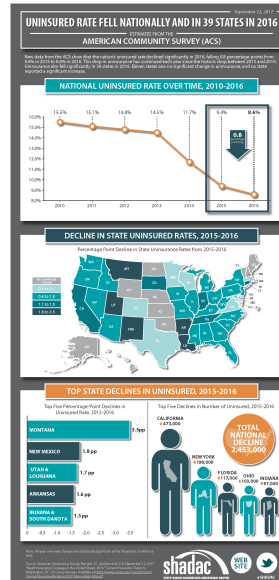
- [2016 ACS: Public & Private Coverage Increased Nationally, State Story Is Mixed](#)
- [2016 ACS: Uninsured Rate Fell Nationally and in 39 States \(Infographic\)](#)
- [NHIS: 2017 Uninsured Rates Stable, Disparities Continue](#)

Recommended Reading

- [Health Insurance Coverage Measurement in Two Surveys](#)
(U.S. Census Bureau Blog)
- [Who Are the Uninsured?](#)
(U.S. Census Bureau Blog)

Related Resources

- [U.S. Census Bureau Health Insurance Website](#)
- [CPS Table Creator](#)
- [U.S. Census Bureau Statistical Testing Tool](#)
- [Comparison of the Prevalence of Uninsured Persons from the National Health Interview Survey and the Current Population Survey, 2016 and 2017](#)
(NHIS Early Release Report)



[Forward to a friend.](#)

[unsubscribe from this list](#) | [update subscription preferences](#)

Copyright © 2017 University of Minnesota
 SHADAC, 2221 University Avenue SE, Suite 345, Minneapolis, MN 55414