



# 2016 HEALTH INSURANCE COVERAGE ESTIMATES

## SHADAC Webinar Featuring U.S. Census Bureau Experts

September 19, 2017 1:00 PM EDT

You will be connected to broadcast audio through your computer.

You can also connect via telephone:

**(888)-299-7210**, Conference ID **940259**

Slides and handouts at:

[www.shadac.org/2017DataReleaseWebinar](http://www.shadac.org/2017DataReleaseWebinar)



Robert Wood Johnson Foundation

# Technical Items

- For those dialing in: Phones automatically muted
- Submit questions using the chat window at any time during the webinar
- Problems:
  - Call Readytalk's help line: (800) 843-9166
  - Ask for help using the chat feature
- Download the slides at [www.shadac.org/2017DataReleaseWebinar](http://www.shadac.org/2017DataReleaseWebinar)
- Webinar archive will be posted on SHADAC's website
  - E-mail notice will be sent to participants

# Presenters



**Joanna Turner**  
SHADAC



**Jennifer Cheeseman Day**  
U.S. Census Bureau



**Marina Vornovitsky**  
U.S. Census Bureau



# CPS and ACS

## Current Population Survey (CPS)

- 2016 estimates released September 12, 2017

## American Community Survey (ACS)

- 2016 estimates released September 14, 2017

# Design Differences

	CPS	ACS
Method	Survey of civilian non-institutionalized population	Survey of U.S. population (including group quarters)
Annual housing units interviewed	About 76,000	About 2.3 million
Geography	Nation, states	Nation, states, sub-state
Mode	Phone and in-person	Mail, phone, in-person, and internet
Uninsurance: Measure	Uninsured all year Point-in-time	Point-in-time
Uninsurance: Years available	1987 to 2016 February - April 2017	2008 to 2016

# Guidance on When to Use Each Source

	CPS	ACS
Trends	✓ 1987 to 2012 2013 forward	✓ 2008 forward
State estimates	✓	✓
Sub-state estimates	N/A	✓ 1-yr for pop > 65,000 5-yr for all geographic areas including: All counties Zip-code tabulation areas
Small sub-populations	N/A	✓

# CPS AND ACS ESTIMATES

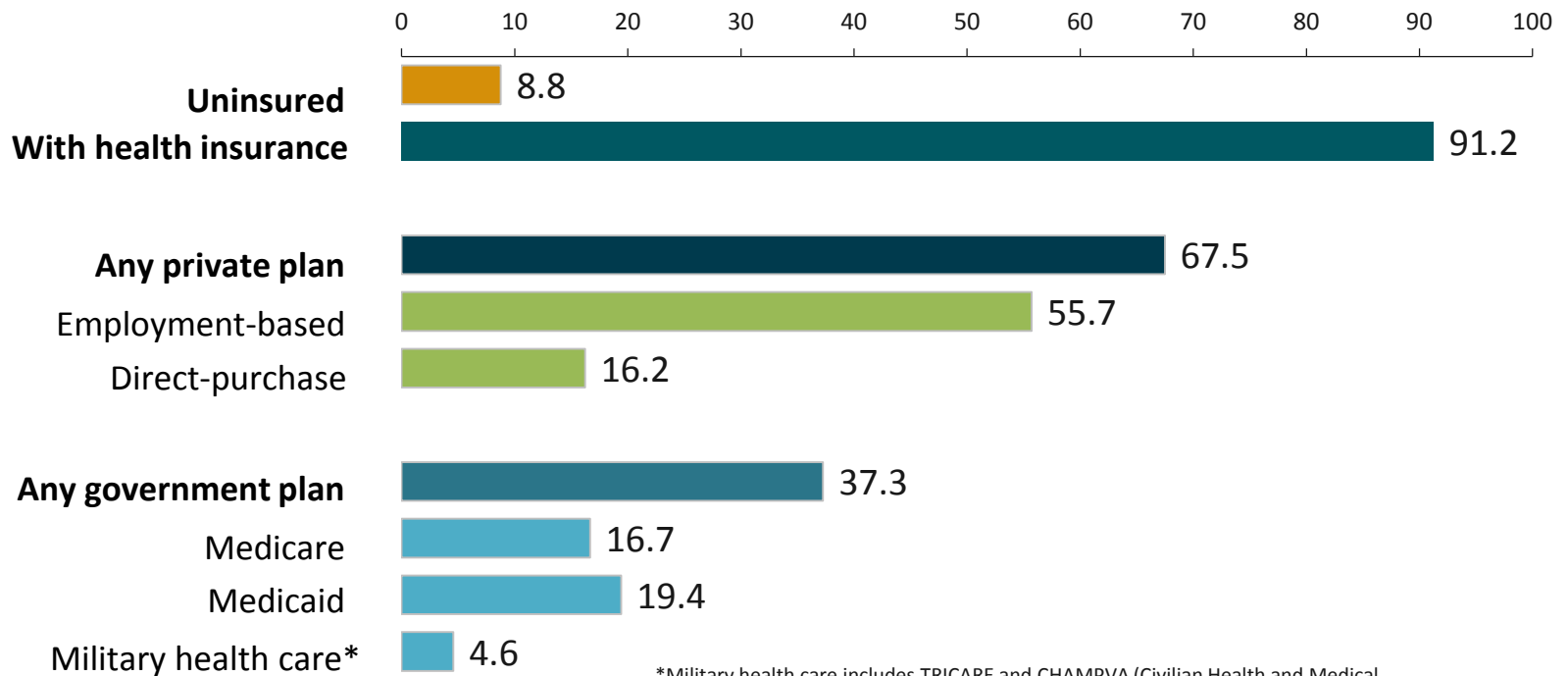


## Changes in the rate of health insurance coverage reflect:

- Economic trends
- Demographic shifts
- Policy changes, such as the Affordable Care Act (ACA)

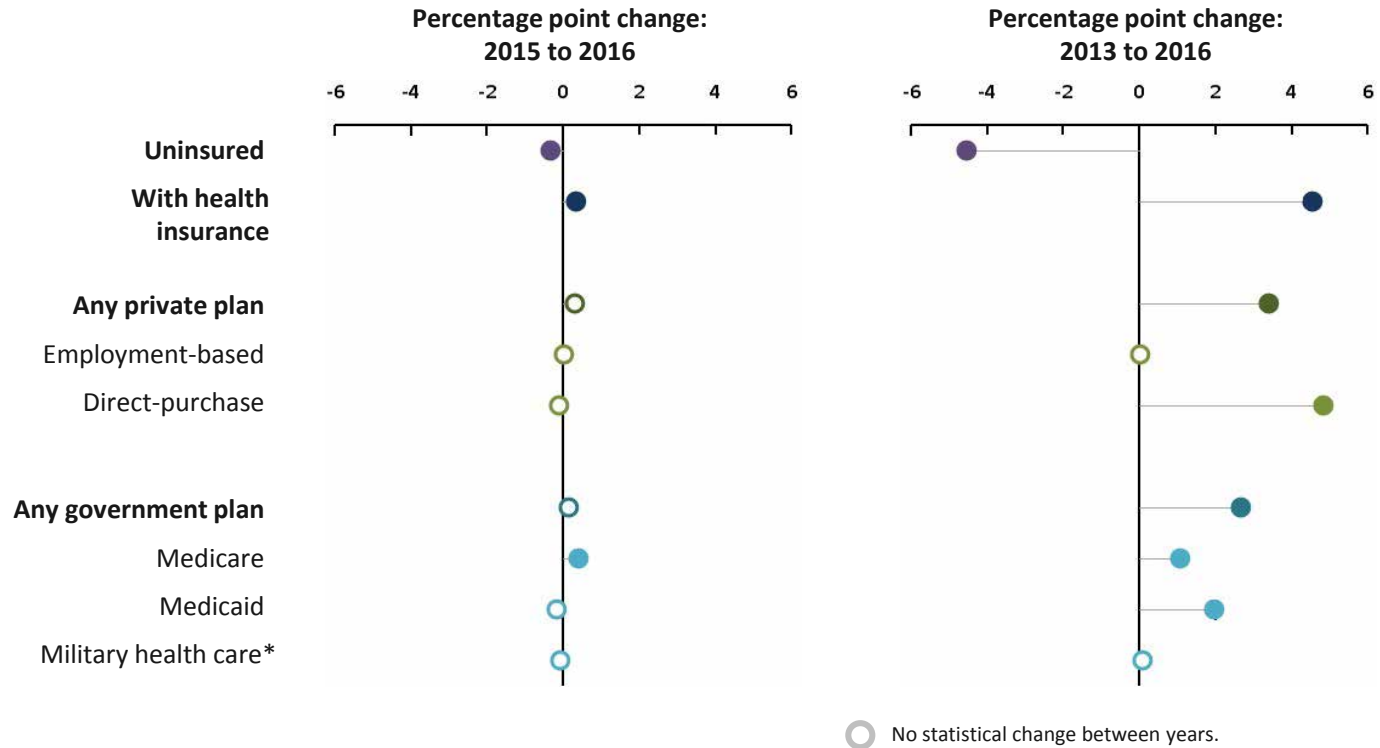


# Percentage of People by Type of Health Insurance Coverage: 2016



\*Military health care includes TRICARE and CHAMPVA (Civilian Health and Medical Program of the Department of Veterans Affairs) as well as care provided by the Department of Veterans Affairs and the military.  
Source: U.S. Census Bureau, Current Population Survey, 2017 Annual Social and Economic Supplement.

# Change in Percentage of People by Type of Health Insurance Coverage: 2013 to 2016

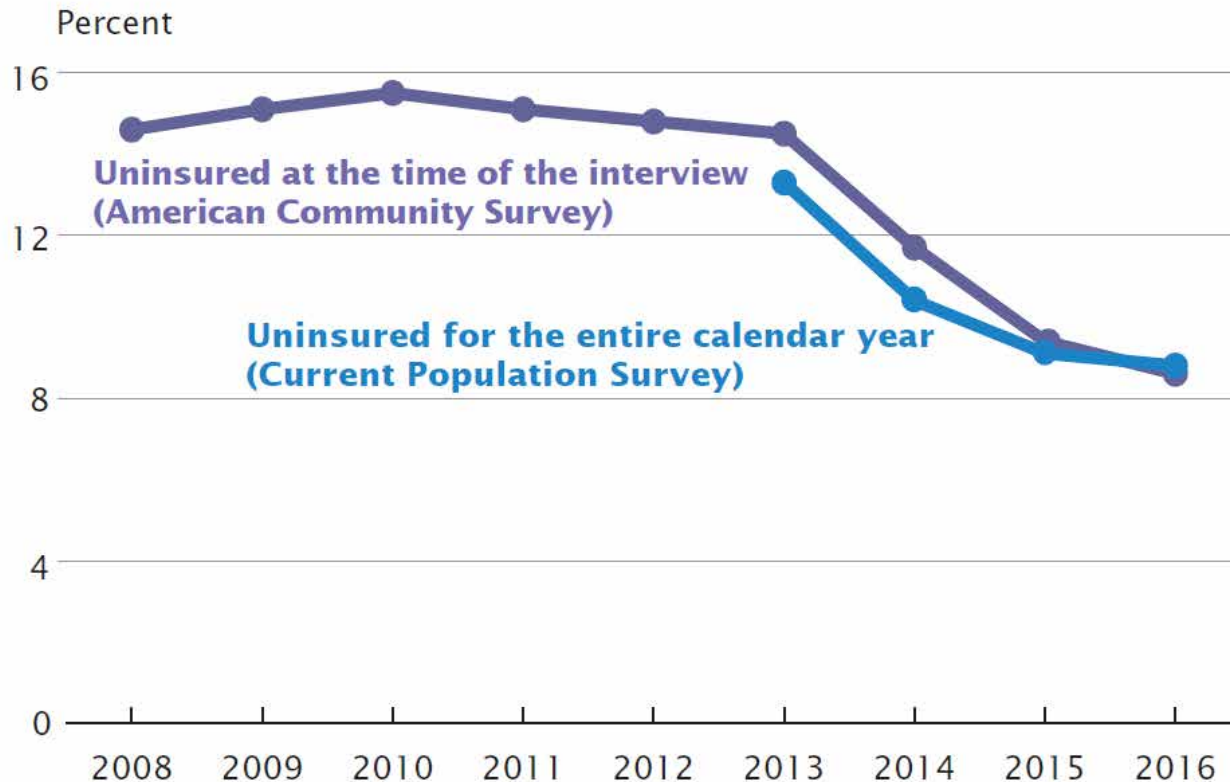


\*Military health care includes TRICARE and CHAMPVA (Civilian Health and Medical Program of the Department of Veterans Affairs) as well as care provided by the Department of Veterans Affairs and the military.

Source: U.S. Census Bureau, Current Population Survey, 2014 to 2017 Annual Social and Economic Supplements.

# Two Measures of Health Insurance

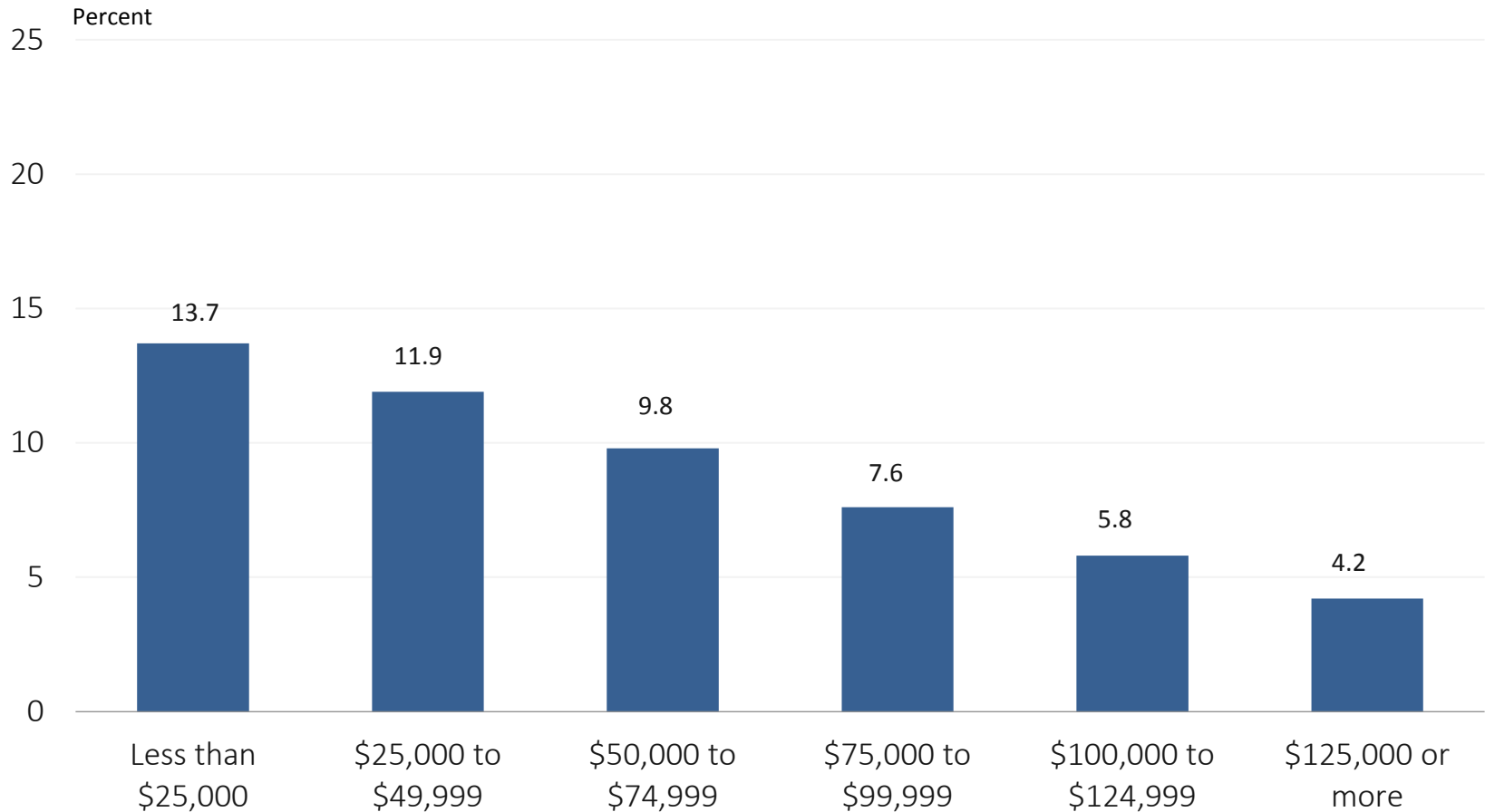
## Uninsured Rate: 2008 to 2016



Note: Estimates are for the civilian noninstitutionalized population. For the Current Population Survey, estimates reflect the population as of March of the following year. For information on confidentiality protection, sampling error, nonsampling error, and definitions in the Current Population Survey, see <[www2.census.gov/programs-surveys/cps/techdocs/cpsmar17.pdf](http://www2.census.gov/programs-surveys/cps/techdocs/cpsmar17.pdf)>. For the American Community Survey, estimates reflect the population as of July of the calendar year. For information on confidentiality protection, sampling error, nonsampling error, and definitions in the American Community Survey, see <[www2.census.gov/programs-surveys/acs/tech\\_docs/accuracy/ACS\\_Accuracy\\_of\\_Data\\_2016.pdf](http://www2.census.gov/programs-surveys/acs/tech_docs/accuracy/ACS_Accuracy_of_Data_2016.pdf)>.

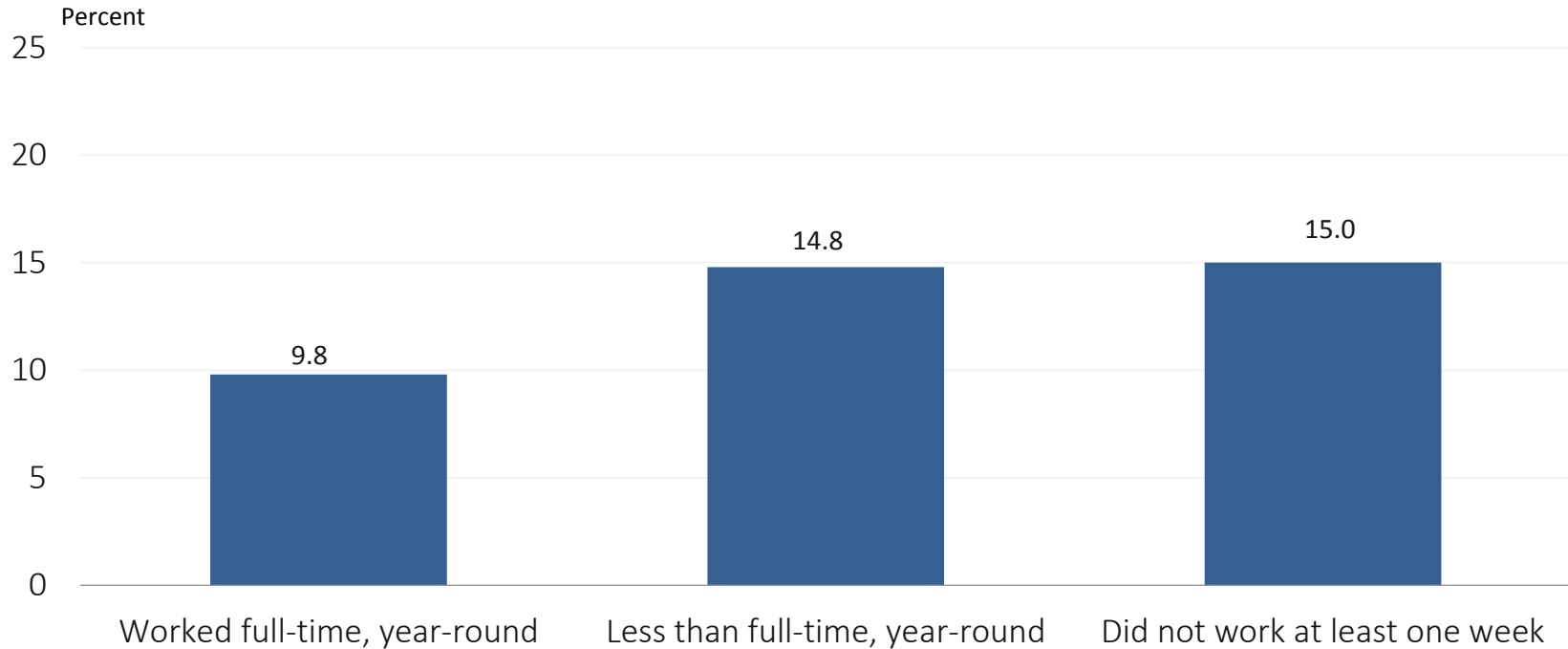
Source: U.S. Census Bureau, Current Population Survey, 2014 to 2017 Annual Social and Economic Supplements and 2008 to 2016 1-Year American Community Surveys.

# Uninsured Rate by Household Income: 2016



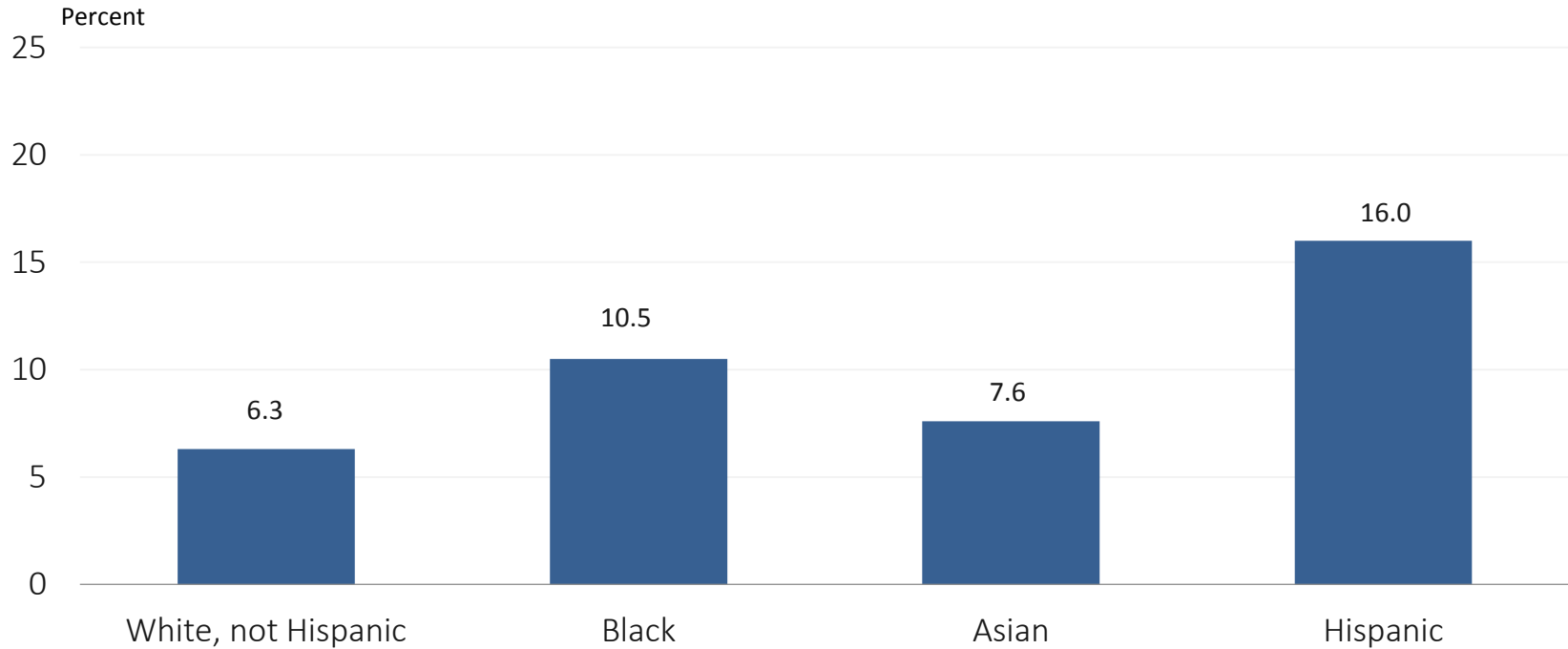
Source: U.S. Census Bureau, Current Population Survey, 2017 Annual Social and Economic Supplement.

# Uninsured Rate by Work Experience, Ages 19 to 64 Years: 2016



Source: U.S. Census Bureau, Current Population Survey,  
2017 Annual Social and Economic Supplement.

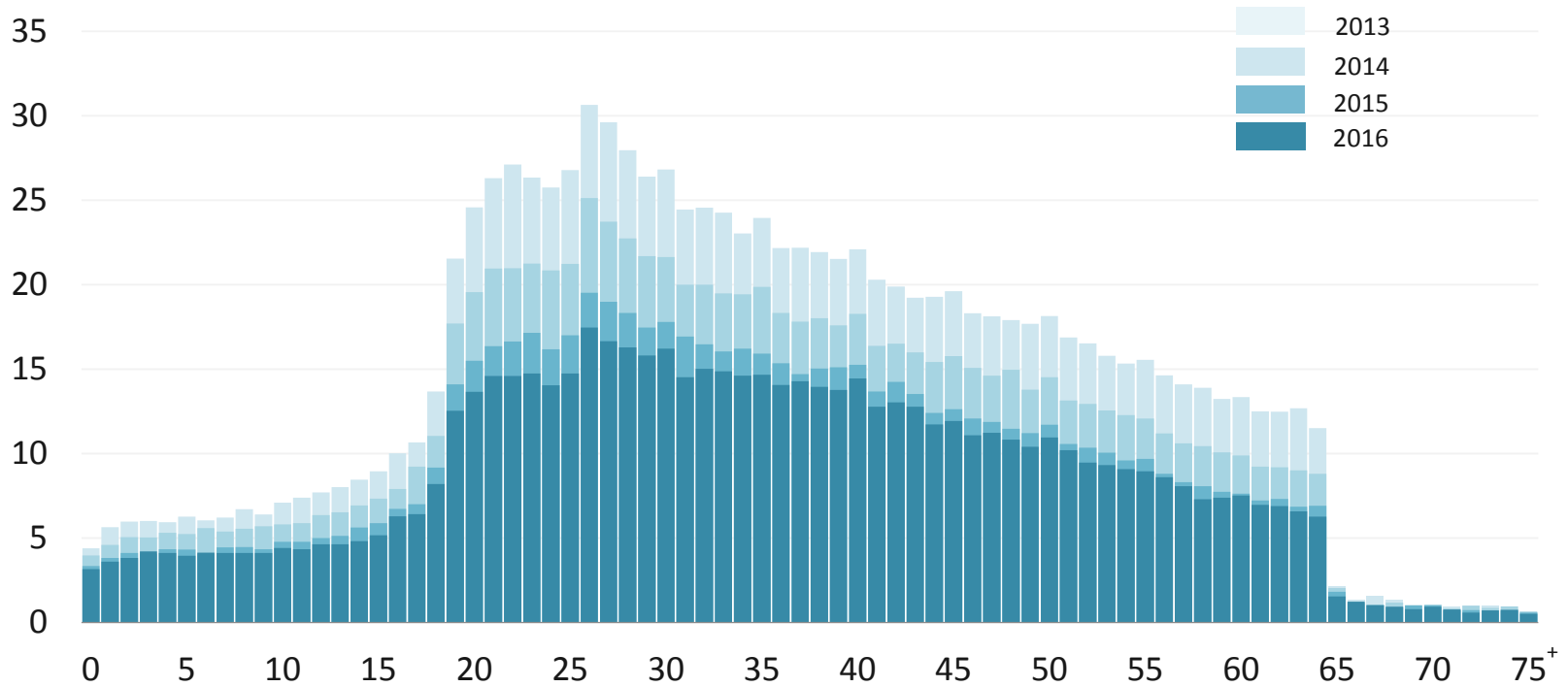
# Uninsured Rate by Race and Hispanic Origin: 2016



Source: U.S. Census Bureau, Current Population Survey, 2017 Annual Social and Economic Supplement.

# Uninsured Rate by Single Year of Age: 2013 to 2016

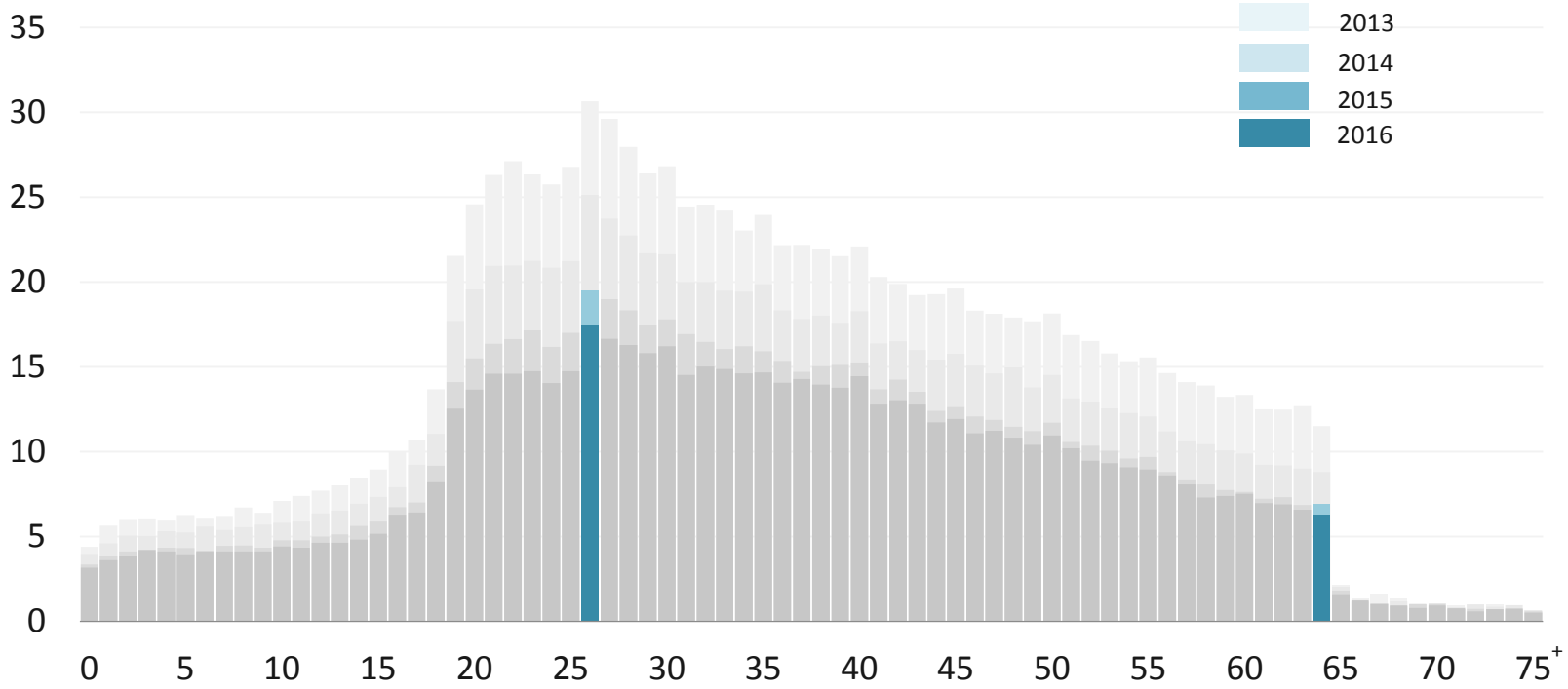
Percent



Source: U.S. Census Bureau, 2013 to 2016 1-Year American Community Surveys.

# Uninsured Rate by Single Year of Age: 2013 to 2016

Percent

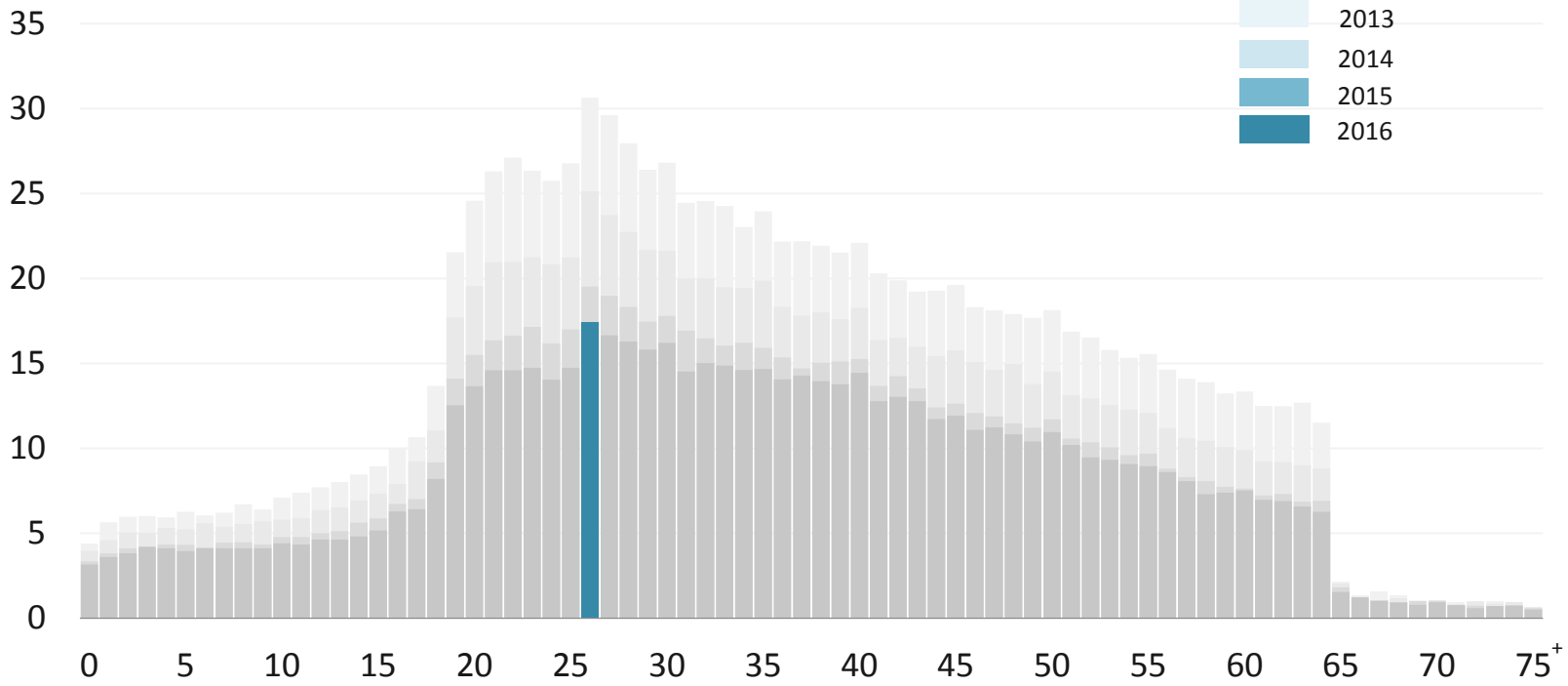


Source: U.S. Census Bureau, 2013 to 2016 1-Year American Community Surveys.



# Uninsured Rate by Single Year of Age: 2013 to 2016

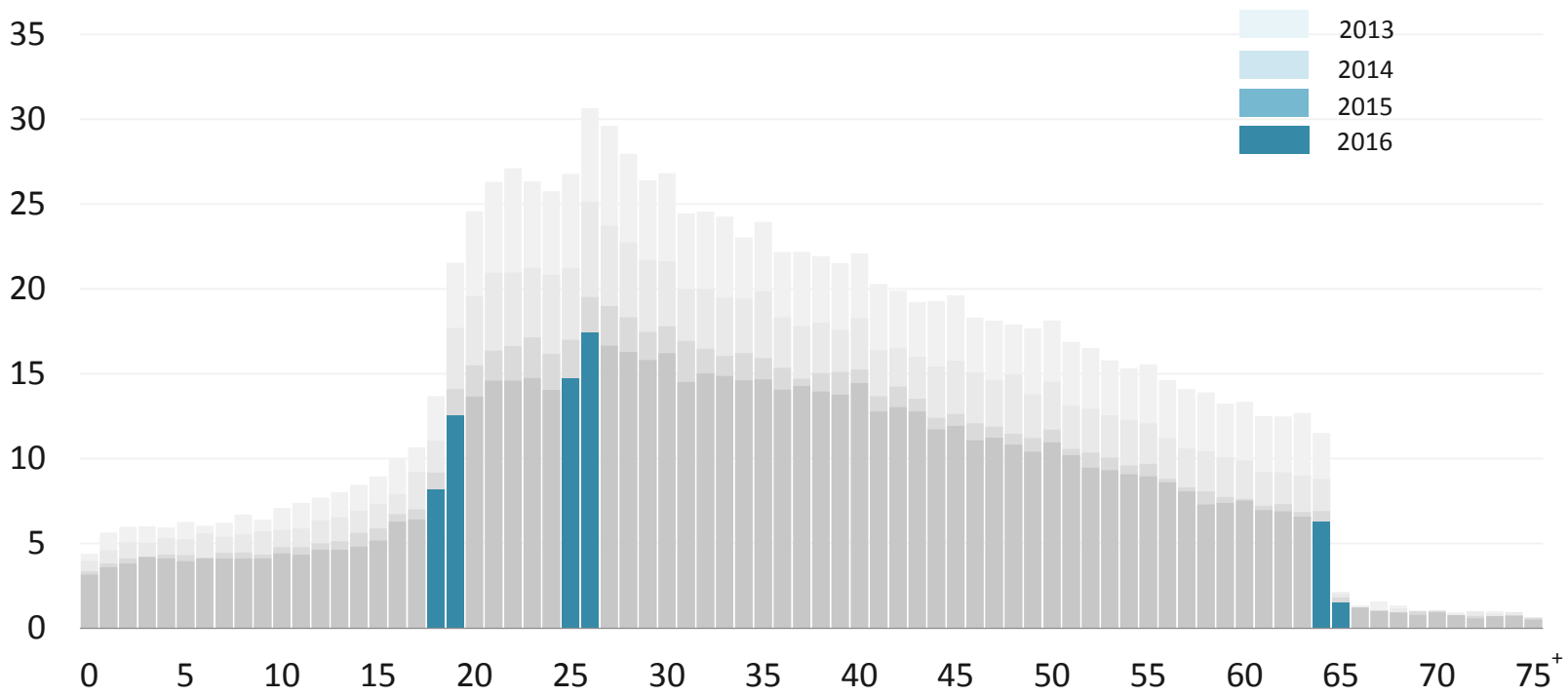
Percent



Source: U.S. Census Bureau, 2013 to 2016 1-Year American Community Surveys.

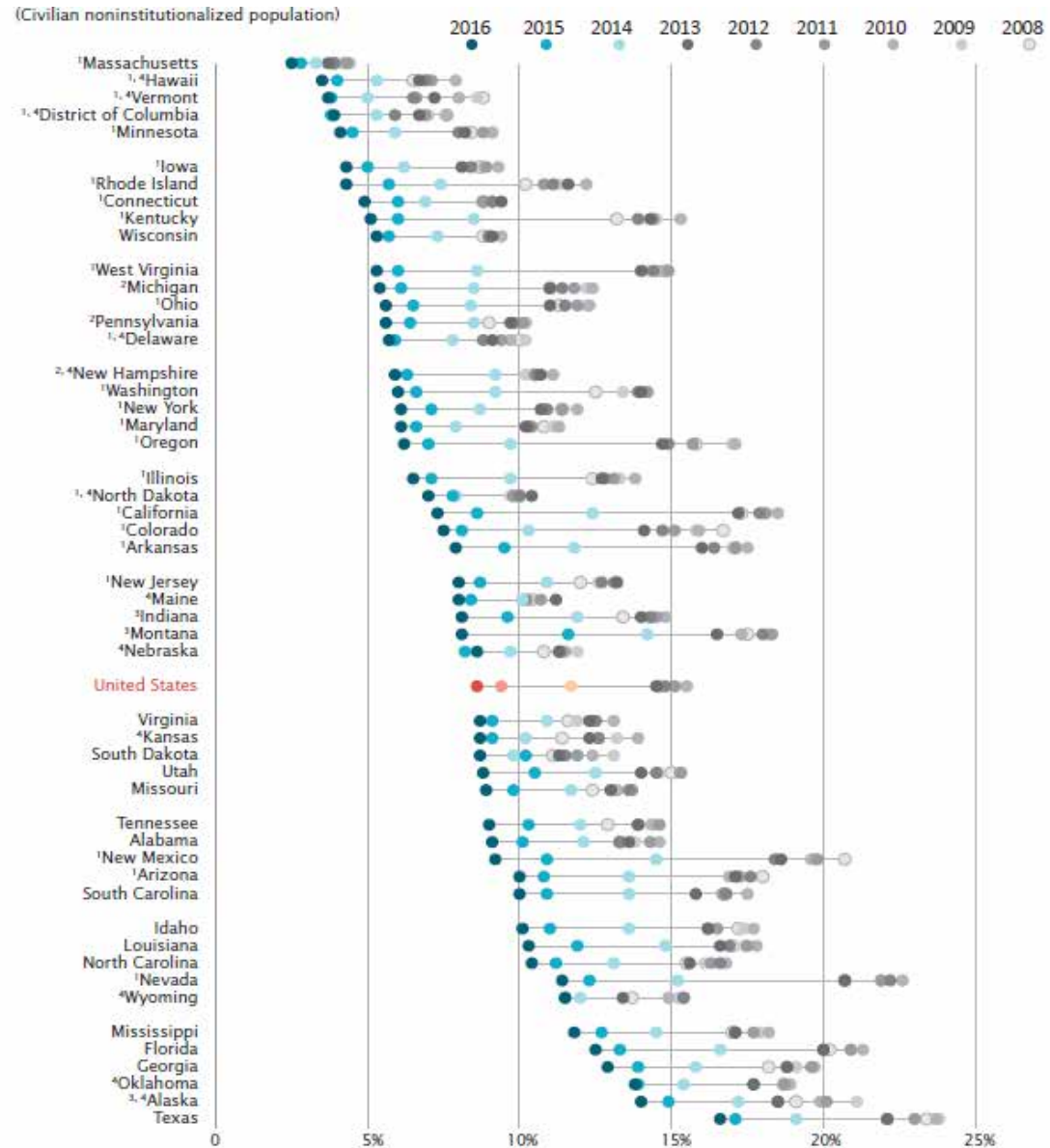
# Uninsured Rate by Single Year of Age: 2013 to 2016

Percent



Source: U.S. Census Bureau, 2013 to 2016 1-Year American Community Surveys.

# Change in the Uninsured Rate by State: 2008 to 2016



<sup>1</sup> Expanded Medicaid eligibility as of January 1, 2014.

<sup>2</sup> Expanded Medicaid eligibility after January 1, 2014, and on or before January 1, 2015.

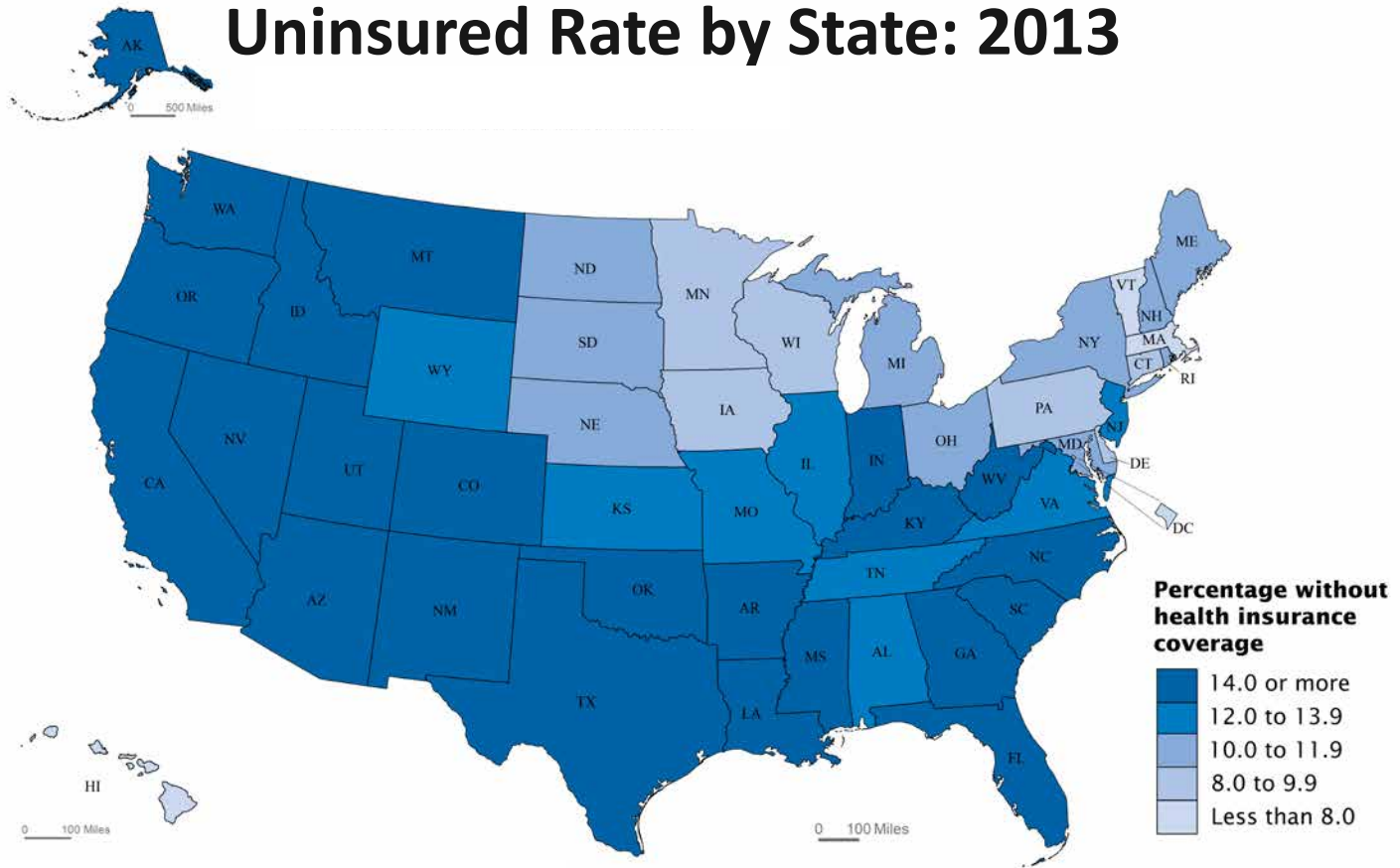
<sup>3</sup> Expanded Medicaid eligibility after January 1, 2015, and on or before January 1, 2016.

<sup>4</sup> The change in the uninsured rate between 2015 and 2016 was not statistically different from zero at the 90 percent confidence level for Alaska, Delaware, Hawaii, Kansas, Maine, Nebraska, New Hampshire, North Dakota, Oklahoma, Vermont, Wyoming, and the District of Columbia.

Note: For information on confidentiality protection, sampling error, nonsampling error, and definitions in the American Community Survey, see <[www2.census.gov/programs-surveys/acs/tech\\_docs/accuracy/ACS\\_Accuracy\\_of\\_Data\\_2016.pdf](http://www2.census.gov/programs-surveys/acs/tech_docs/accuracy/ACS_Accuracy_of_Data_2016.pdf)>.

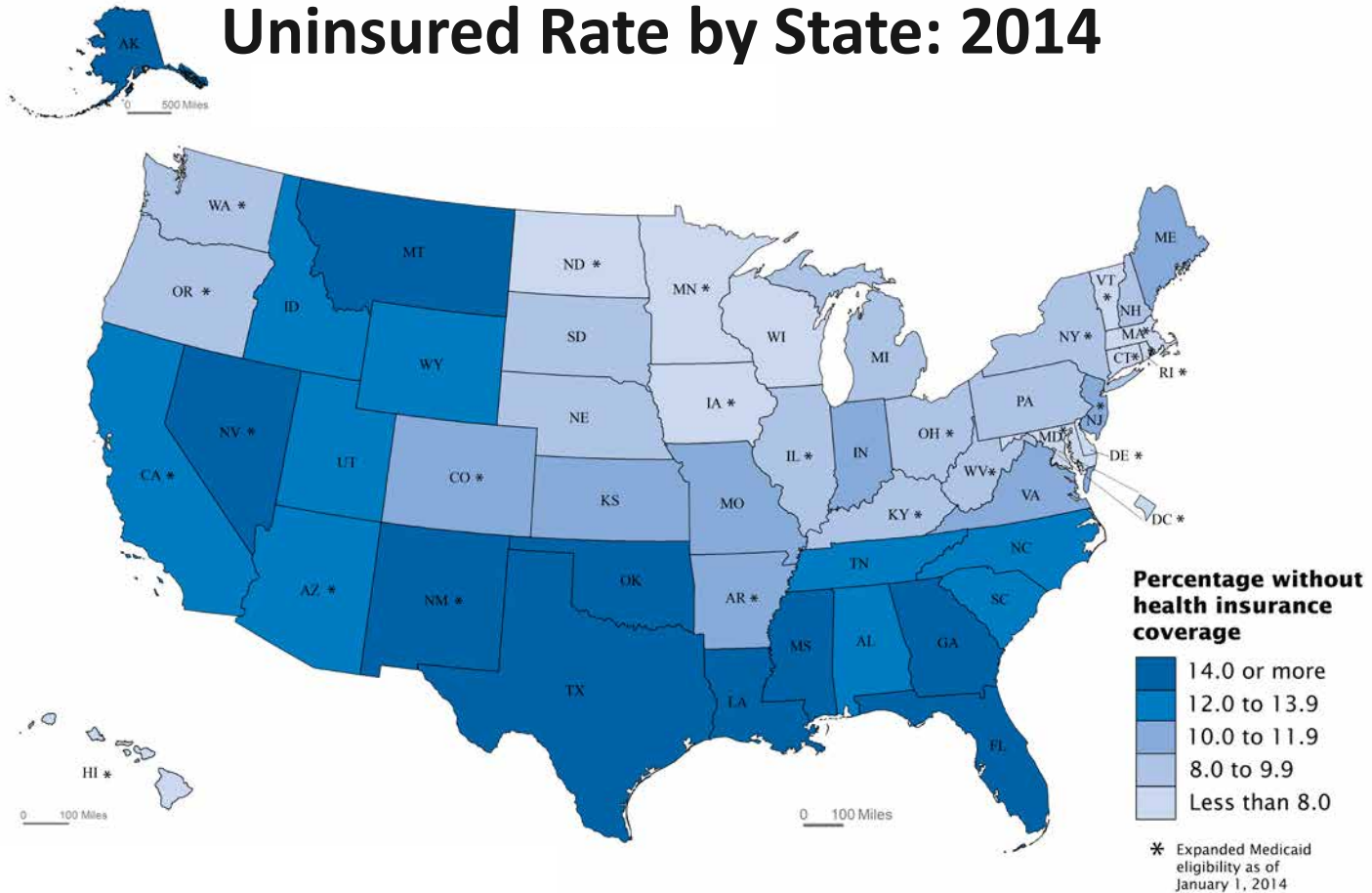
Source: U.S. Census Bureau, 2008 to 2016 1-Year American Community Surveys.

# Uninsured Rate by State: 2013



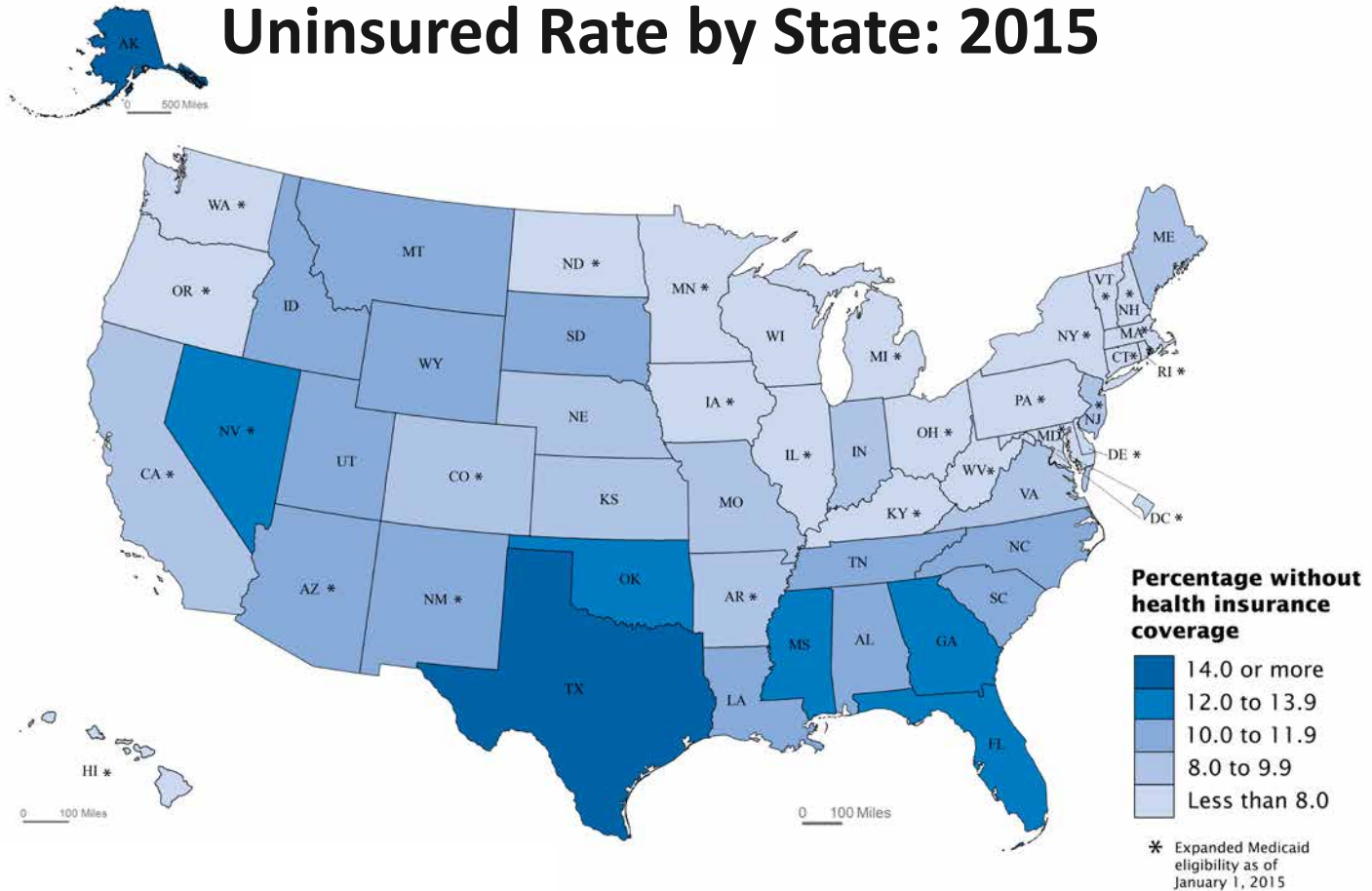
Source: U.S. Census Bureau, 2013 1-Year American Community Survey.

# Uninsured Rate by State: 2014



Source: U.S. Census Bureau, 2014 1-Year American Community Survey.

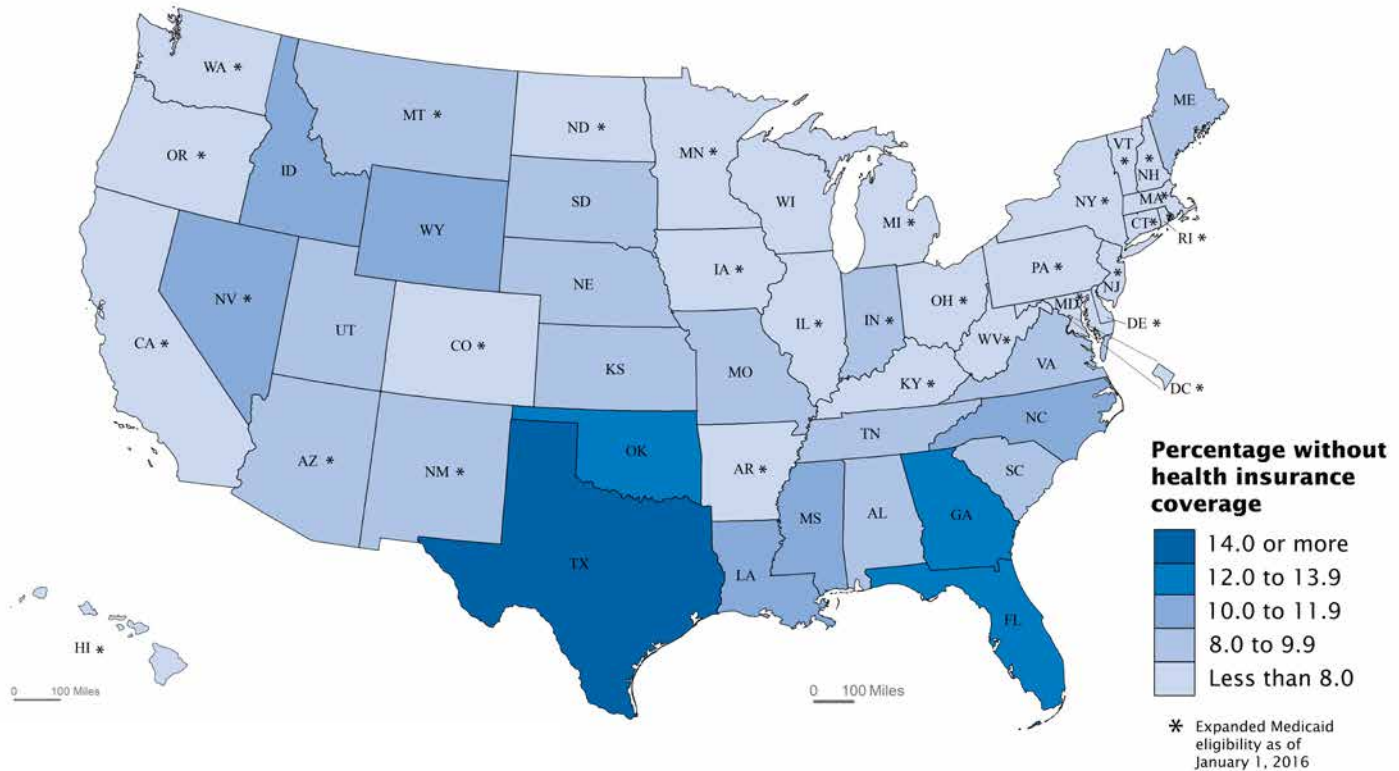
# Uninsured Rate by State: 2015



Source: U.S. Census Bureau, 2015 1-Year American Community Survey.



# Uninsured Rate by State: 2016



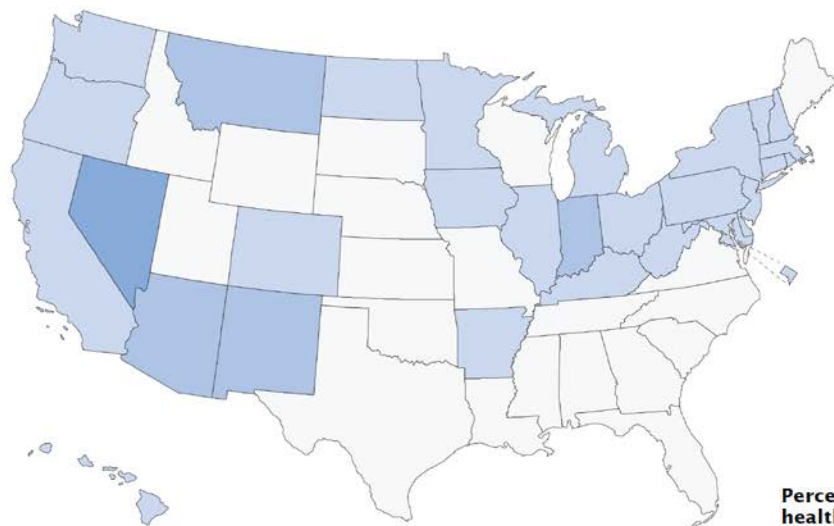
Source: U.S. Census Bureau, 2016 1-Year American Community Survey.

# Uninsured Rate by State and Medicaid Expansion Status: 2016



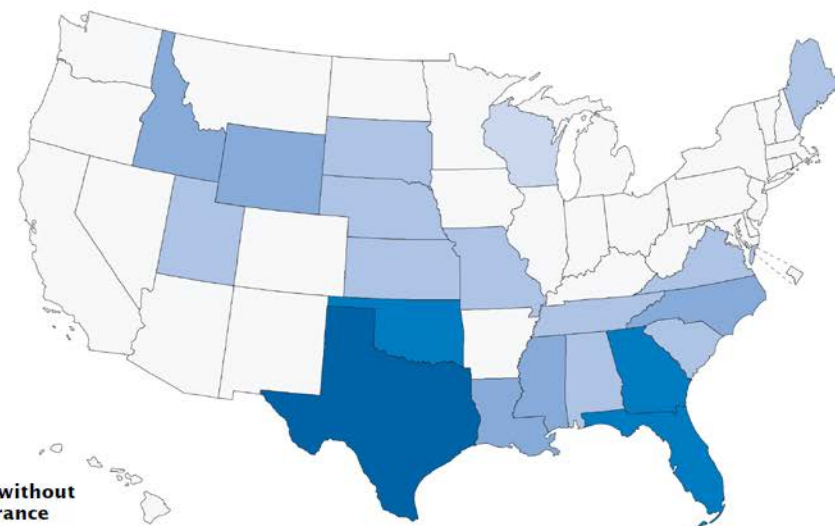
## Expansion States\*

2016 uninsured rate: 6.5%

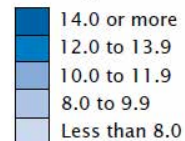


## Non-Expansion States\*

2016 uninsured rate: 11.7%



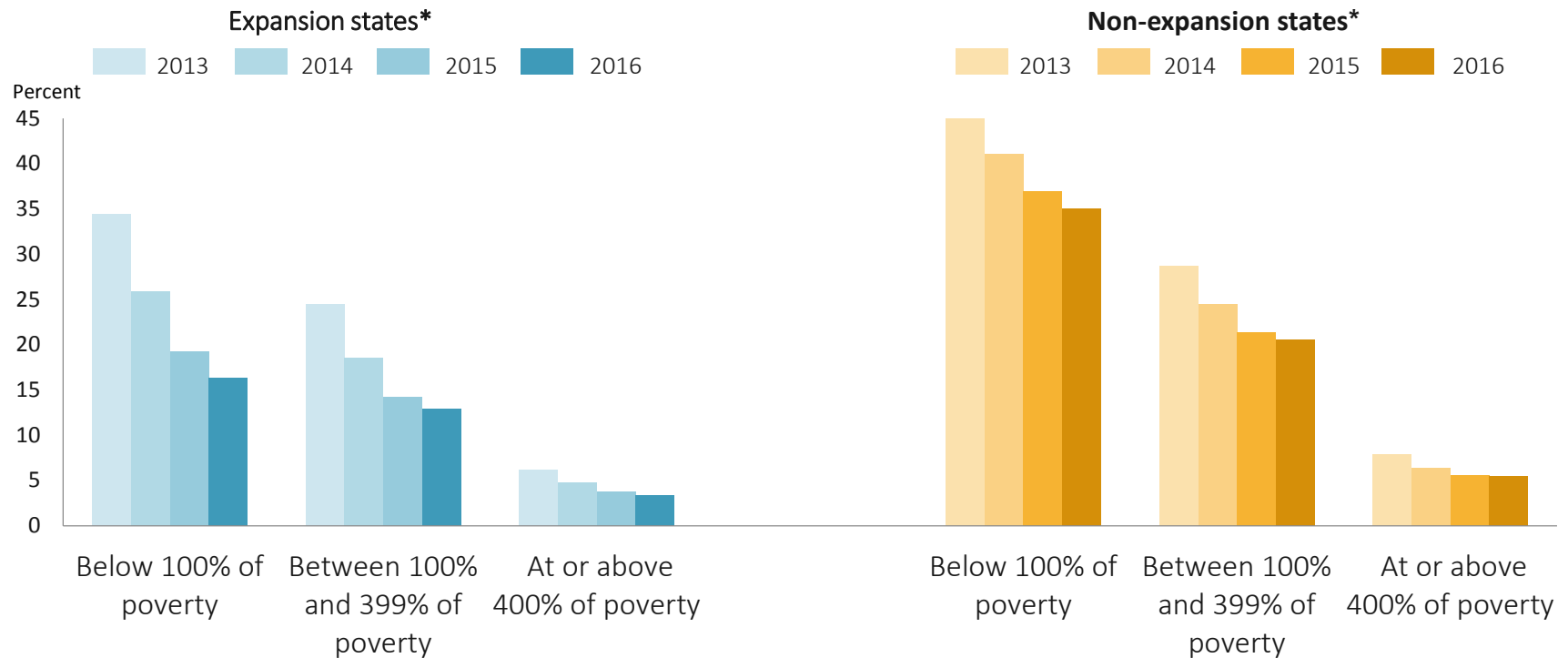
### Percentage without health insurance coverage



\*Medicaid expansion status as of January 1, 2016.  
Source: U.S. Census Bureau, 2016 1-Year American Community Survey.



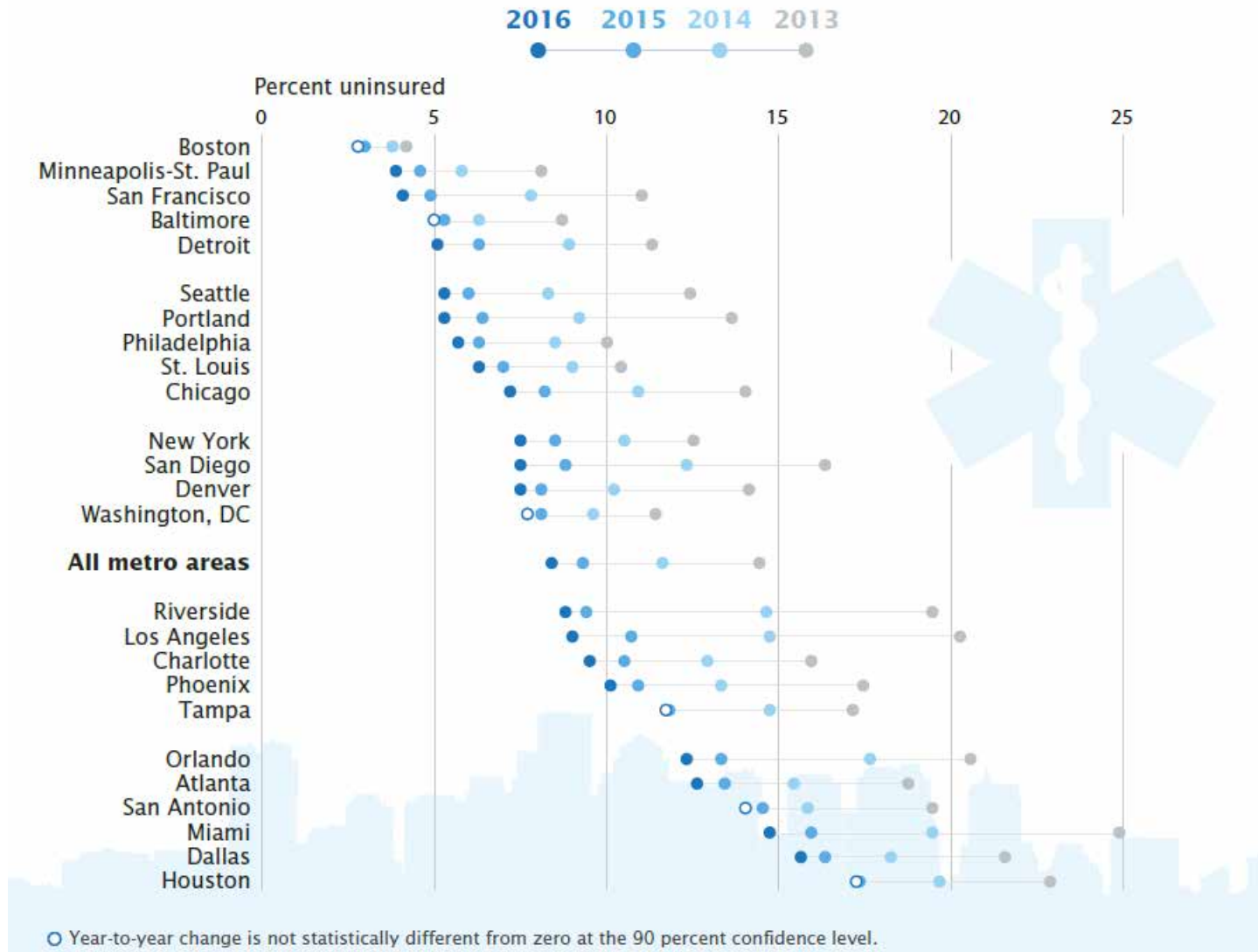
# Uninsured Rate by Poverty Status and Medicaid Expansion of State for Adults Aged 19 to 64 Years: 2013 to 2016



\*Medicaid expansion status as of January 1, 2016.  
 Source: U.S. Census Bureau, 2013 to 2016 1-Year American Community Surveys.

# Population Without Health Insurance Coverage

## The 25 Most Populous Metro Areas



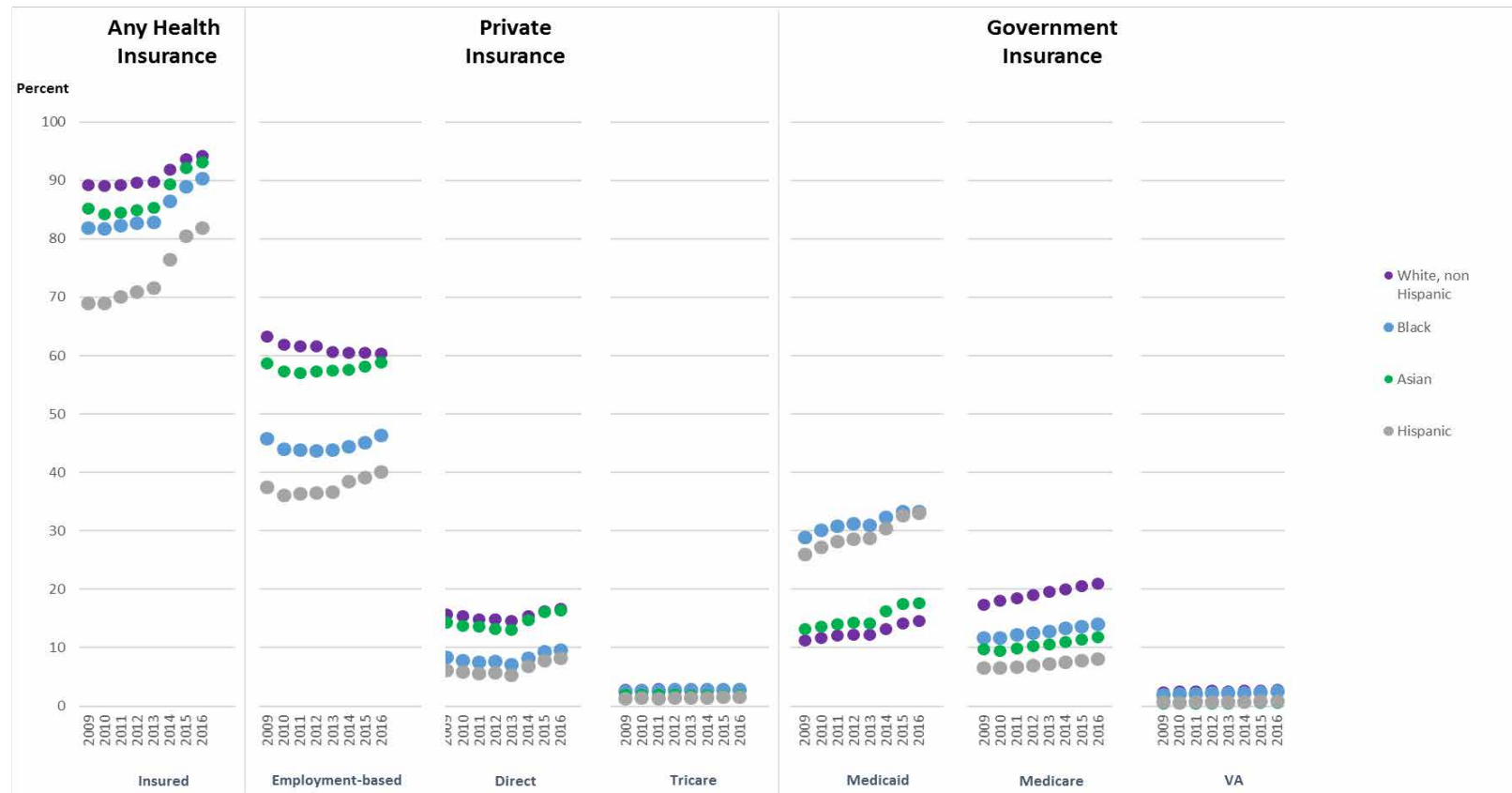
# Blog: Health Insurance Coverage Measurement in Two Surveys

<https://blogs.census.gov/2016/09/08/health-insurance-coverage-measurement-in-two-surveys-3/>

- How do the CPS and the ACS measure health insurance coverage?
- Which estimates should you use?

# Underlying Dynamics of Changes in Health Insurance Coverage

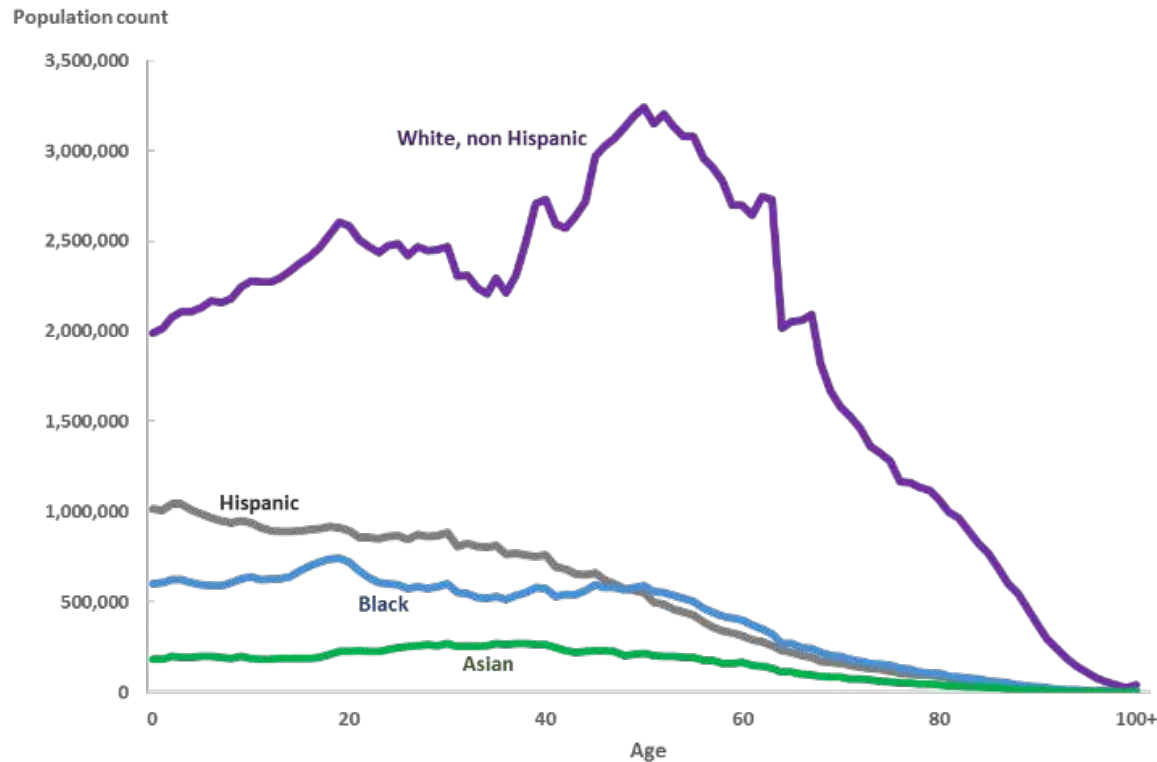
Figure 1. Health Insurance Coverage by Race and Hispanic Origin: 2009 to 2016



Source: U. S. Census Bureau, American Community Surveys, 2009 to 2016. For more information, see [www.census.gov/programs-surveys/acs/](http://www.census.gov/programs-surveys/acs/).

# Underlying Dynamics of Changes in Health Insurance Coverage

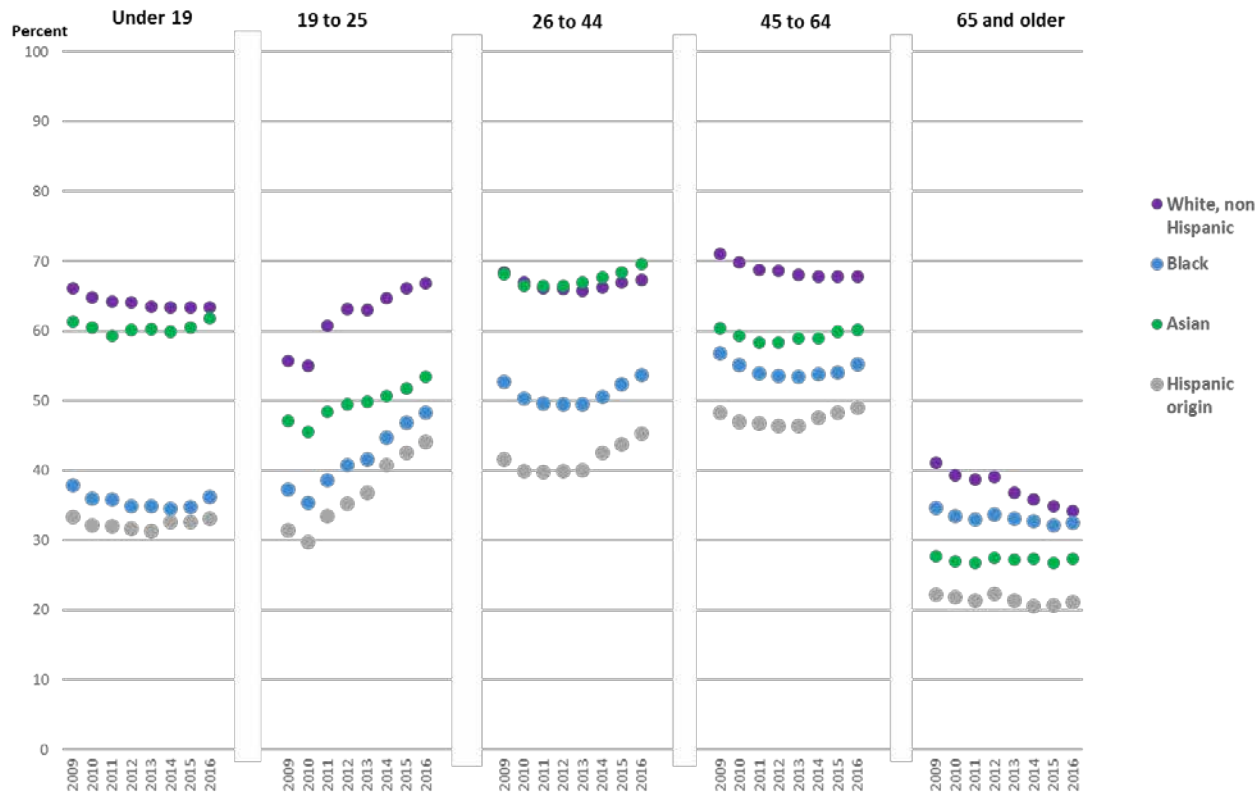
Figure 2. Population by Age: 2016



Source: U. S. Census Bureau, American FactFinder Table PEPALL6N, "Annual Estimates of the Resident Population by Sex, Single Year of Age, Race, and Hispanic Origin for the United States: April 1, 2010, to July 1, 2016."

# Underlying Dynamics of Changes in Health Insurance Coverage

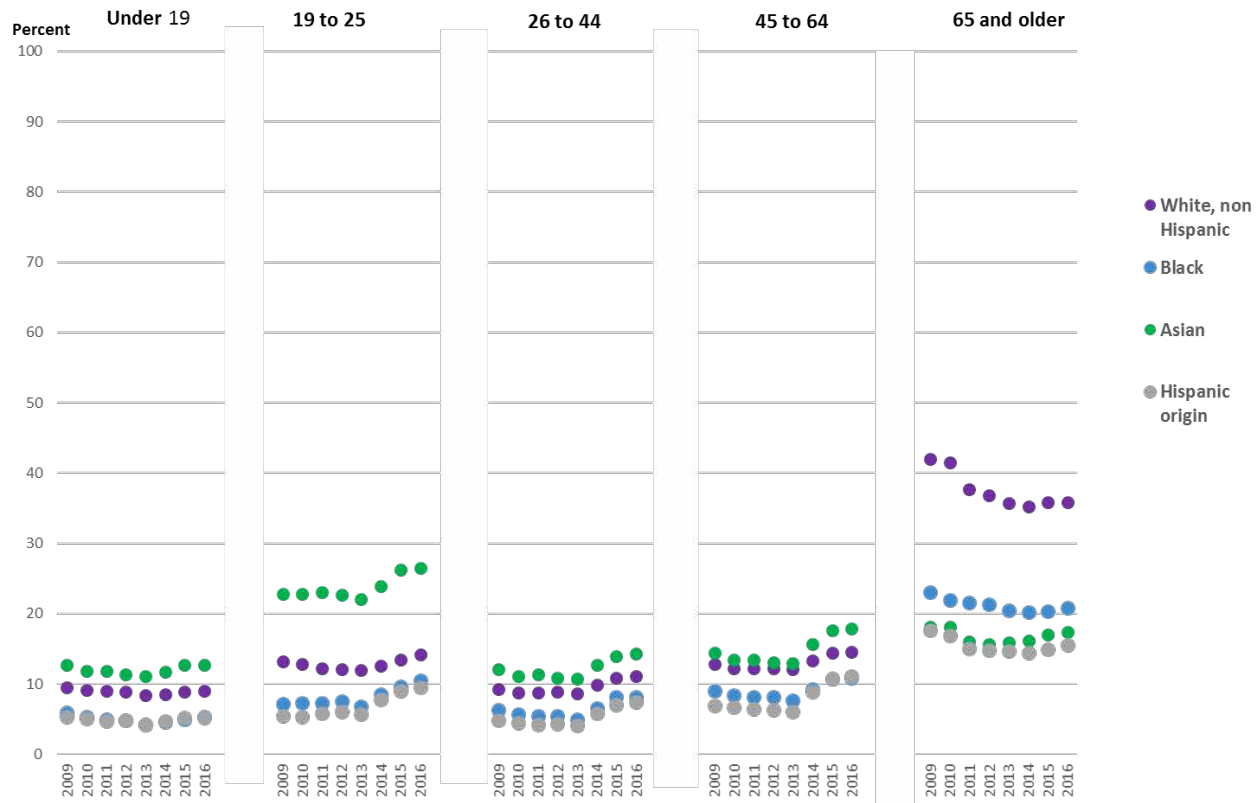
Figure 3. Employment-Based Coverage by Age and Race and Hispanic Origin: 2009 - 2016



Source: U. S. Census Bureau, American Community Surveys, 2009 to 2016. For more information, see [www.census.gov/programs-surveys/acs/](http://www.census.gov/programs-surveys/acs/).

# Underlying Dynamics of Changes in Health Insurance Coverage

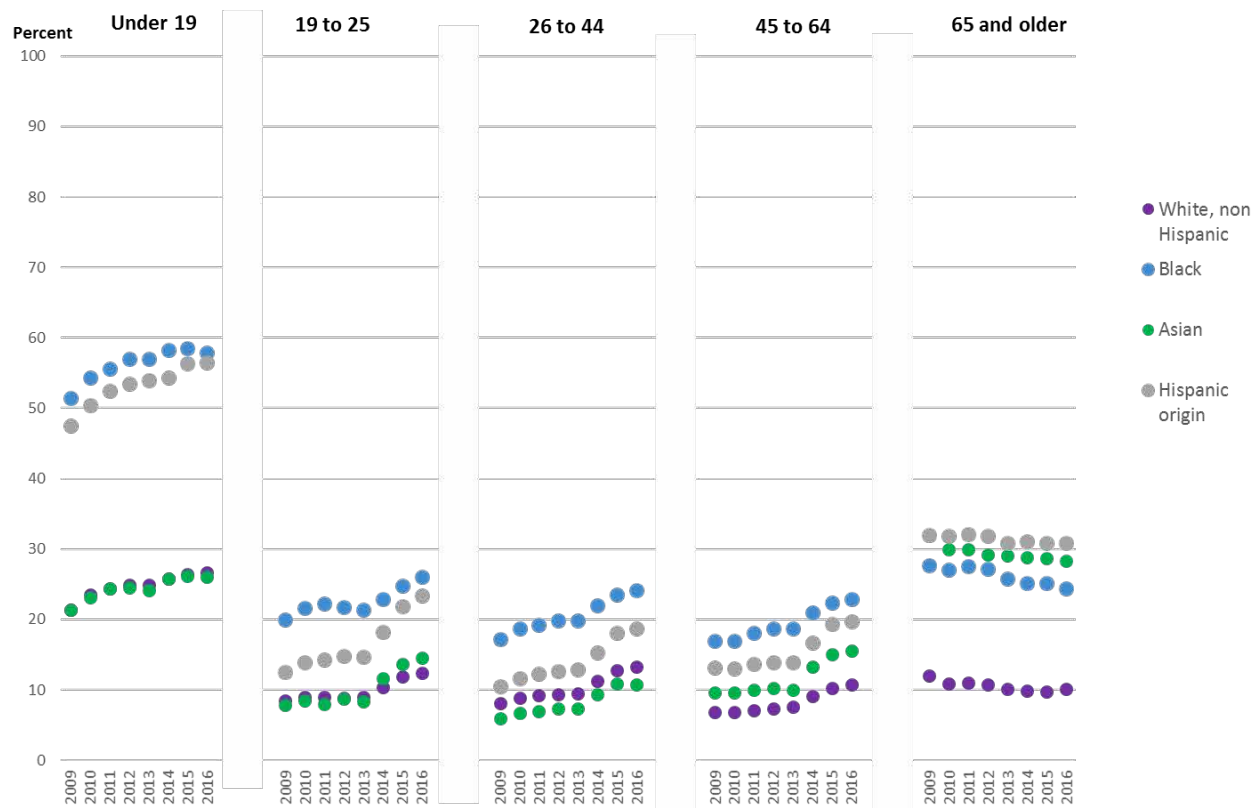
Figure 4. Direct Purchase Coverage by Age and Race and Hispanic Origin: 2009 - 2016



Source: U. S. Census Bureau, American Community Surveys, 2009 to 2016. For more information, see [www.census.gov/programs-surveys/acs/](http://www.census.gov/programs-surveys/acs/).

# Underlying Dynamics of Changes in Health Insurance Coverage

Figure 5. Medicaid Coverage by Age and Race and Hispanic Origin: 2009 - 2016

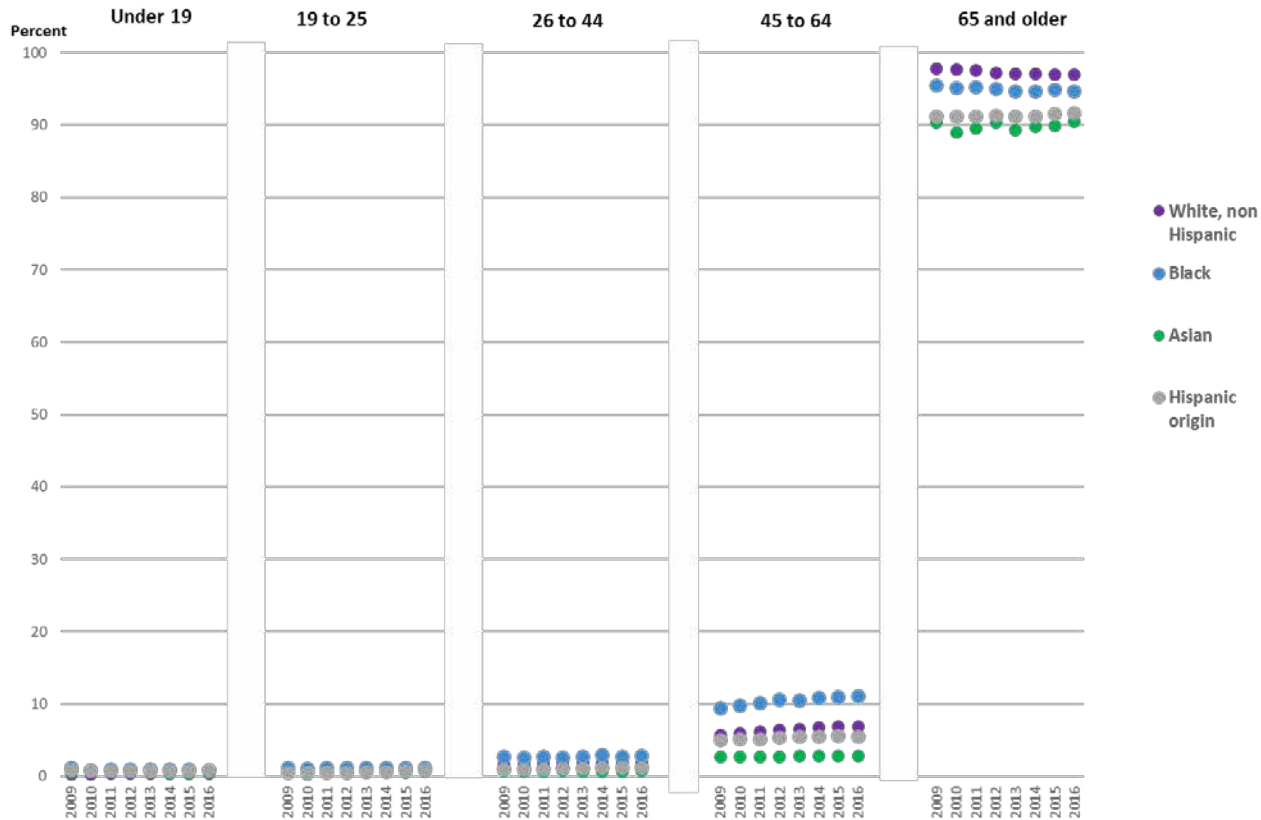


Source: U. S. Census Bureau, American Community Surveys, 2009 to 2016. For more information, see [www.census.gov/programs-surveys/acs/](http://www.census.gov/programs-surveys/acs/).



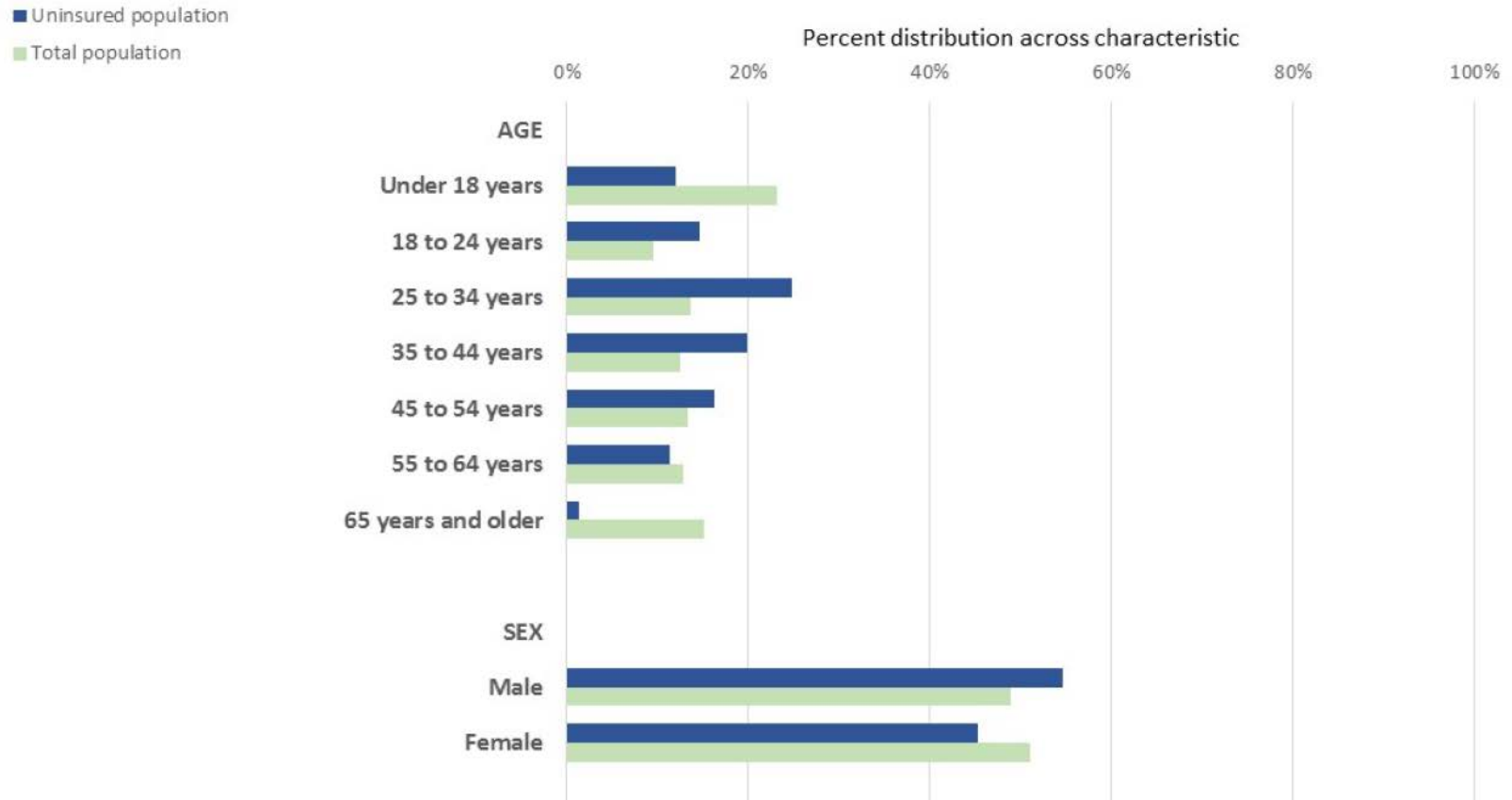
# Underlying Dynamics of Changes in Health Insurance Coverage

Figure 6. Medicare Coverage by Age and Race and Hispanic Origin: 2009 - 2016



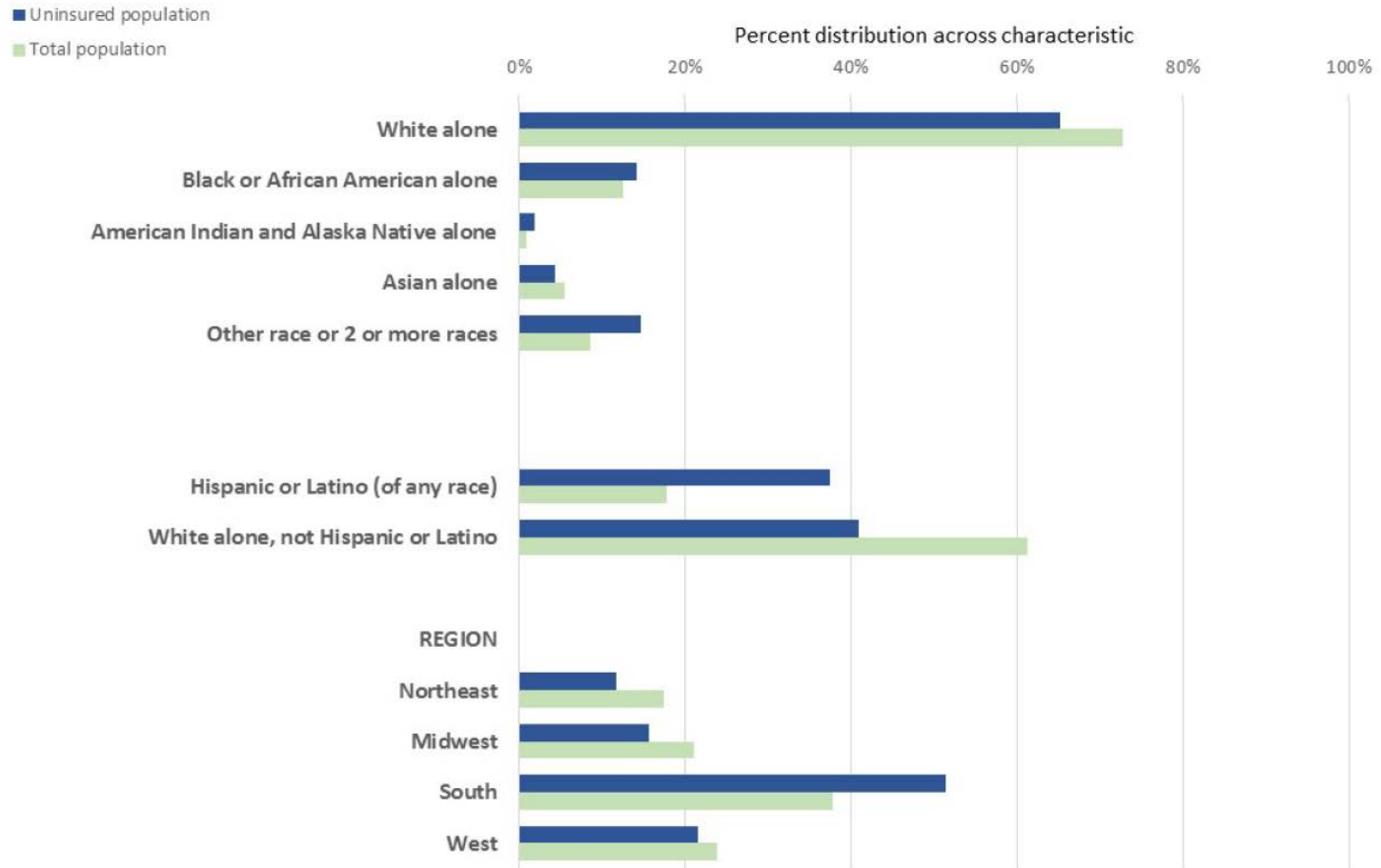
Source: U. S. Census Bureau, American Community Surveys, 2009 to 2016. For more information, see [www.census.gov/programs-surveys/acs/](http://www.census.gov/programs-surveys/acs/).

# Who are the Uninsured?



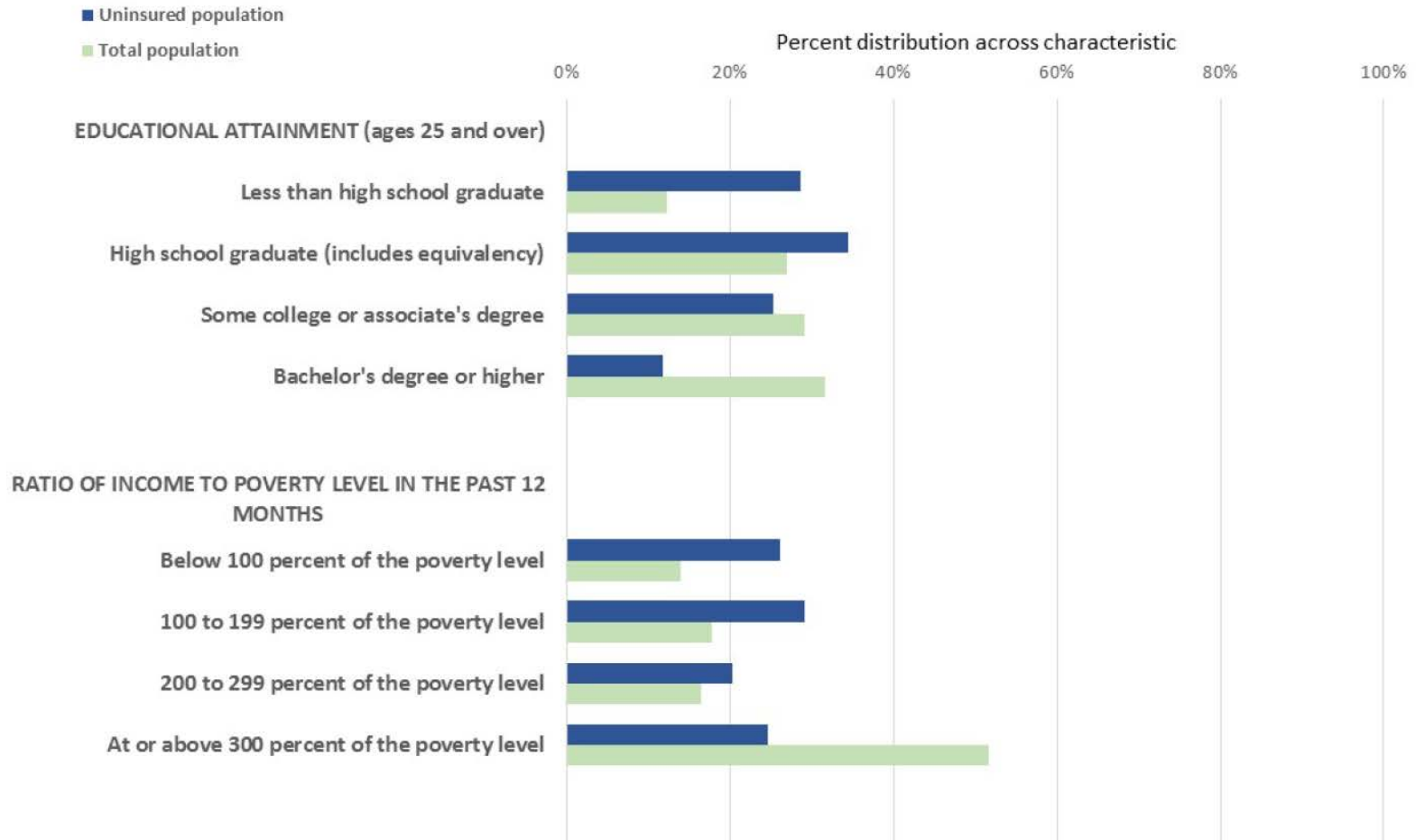
Source: U. S. Census Bureau, 2016 American Community Survey. American FactFinder Table S2702. For more information, see [www.census.gov/programs-surveys/acs/](http://www.census.gov/programs-surveys/acs/).

# Who are the Uninsured?



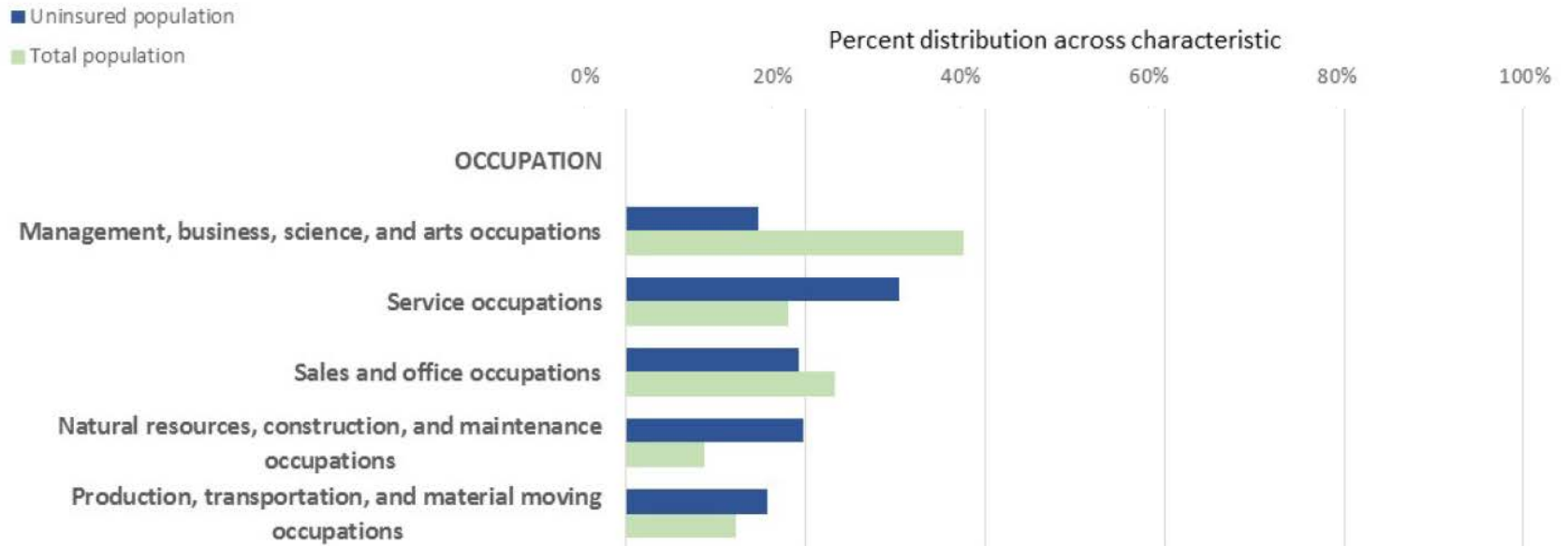
Source: U. S. Census Bureau, 2016 American Community Survey. American FactFinder Table S2702. For more information, see [www.census.gov/programs-surveys/acs/](http://www.census.gov/programs-surveys/acs/).

# Who are the Uninsured?



Source: U. S. Census Bureau, 2016 American Community Survey. American FactFinder Table S2702. For more information, see [www.census.gov/programs-surveys/acs/](http://www.census.gov/programs-surveys/acs/).

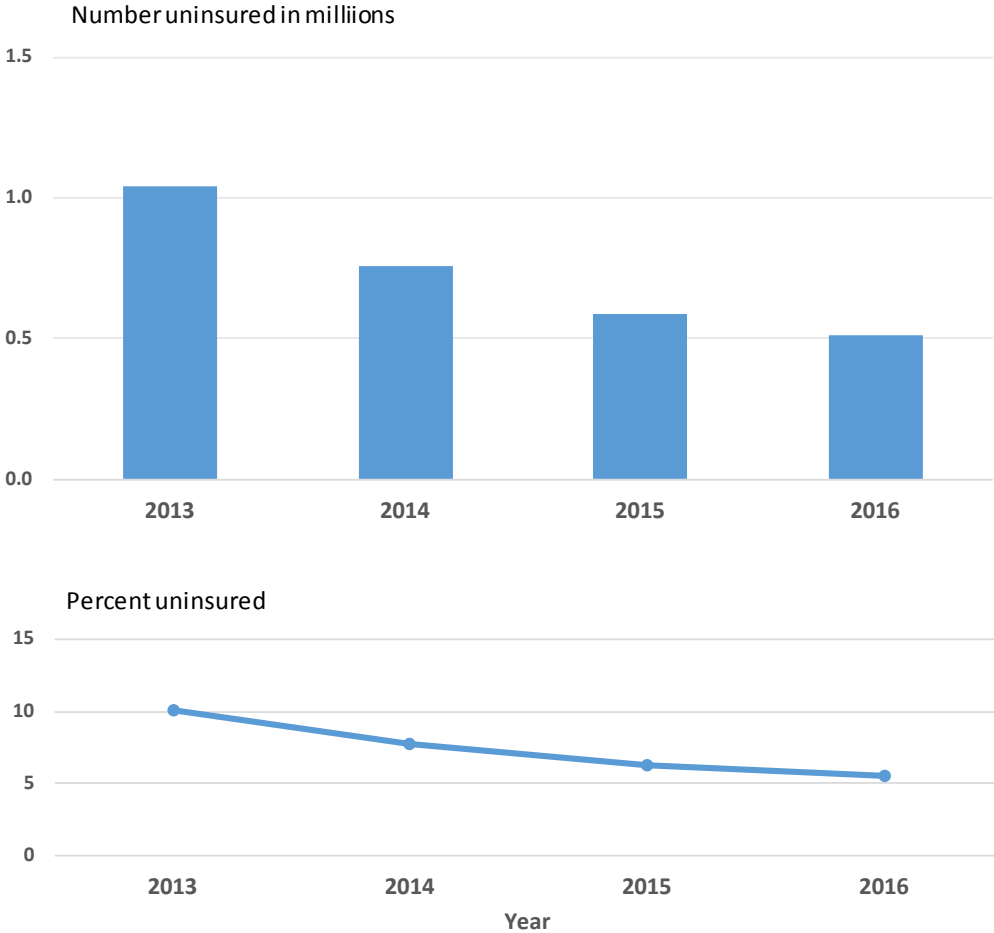
# Who are the Uninsured?



Source: U. S. Census Bureau, 2016 American Community Survey. American FactFinder Table S2702. For more information, see [www.census.gov/programs-surveys/acs/](http://www.census.gov/programs-surveys/acs/).

# Health Insurance Coverage of Veterans

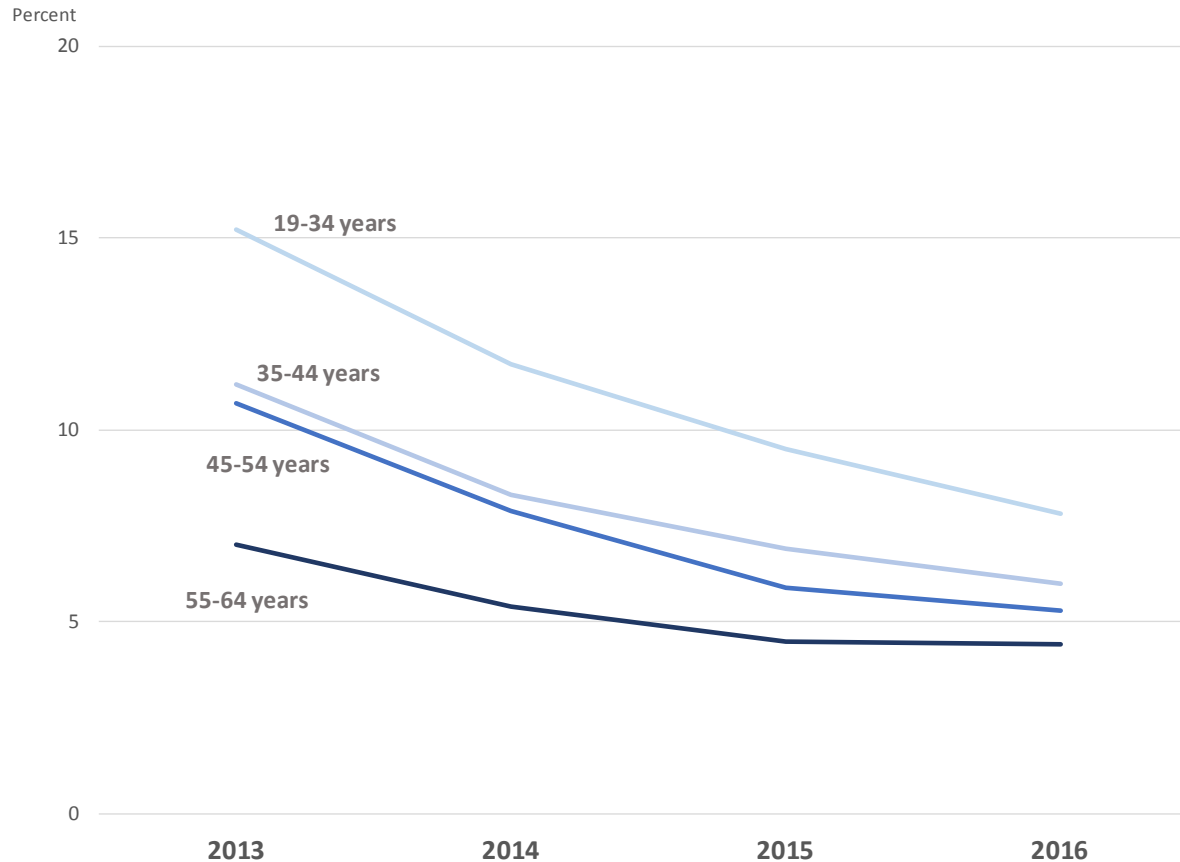
## Working-Age Veterans Without Health Insurance Coverage: 2013 to 2016



Source: U.S. Census Bureau, American Community Surveys, 2013 to 2016.  
For more information, see [www.census.gov/programs-surveys/acs/](http://www.census.gov/programs-surveys/acs/).

# Health Insurance Coverage of Veterans

## Uninsured Rate of Veterans by Age: 2013 to 2016

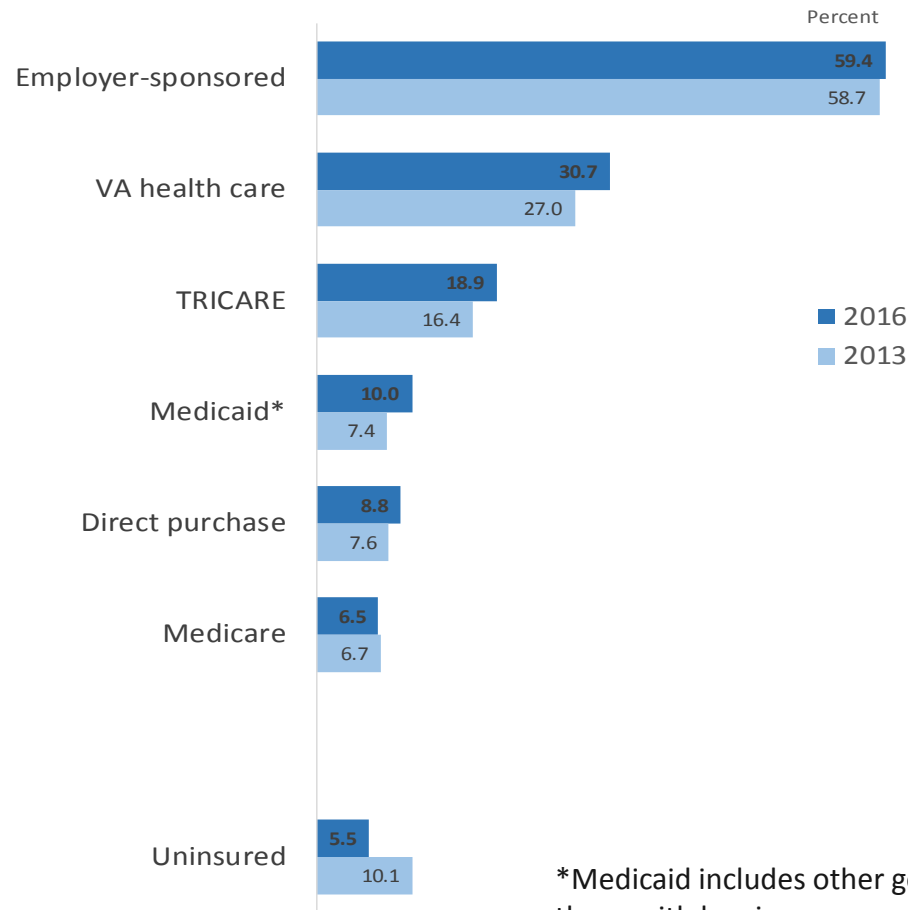


Source: U.S. Census Bureau, American Community Surveys, 2013 to 2016.

For more information, see [www.census.gov/programs-surveys/acs/](http://www.census.gov/programs-surveys/acs/).

# Health Insurance Coverage of Veterans

## Types of Health Insurance Coverage for Working-Age Veterans: 2013 and 2016



\*Medicaid includes other government-assistance plans for those with low incomes or a disability.

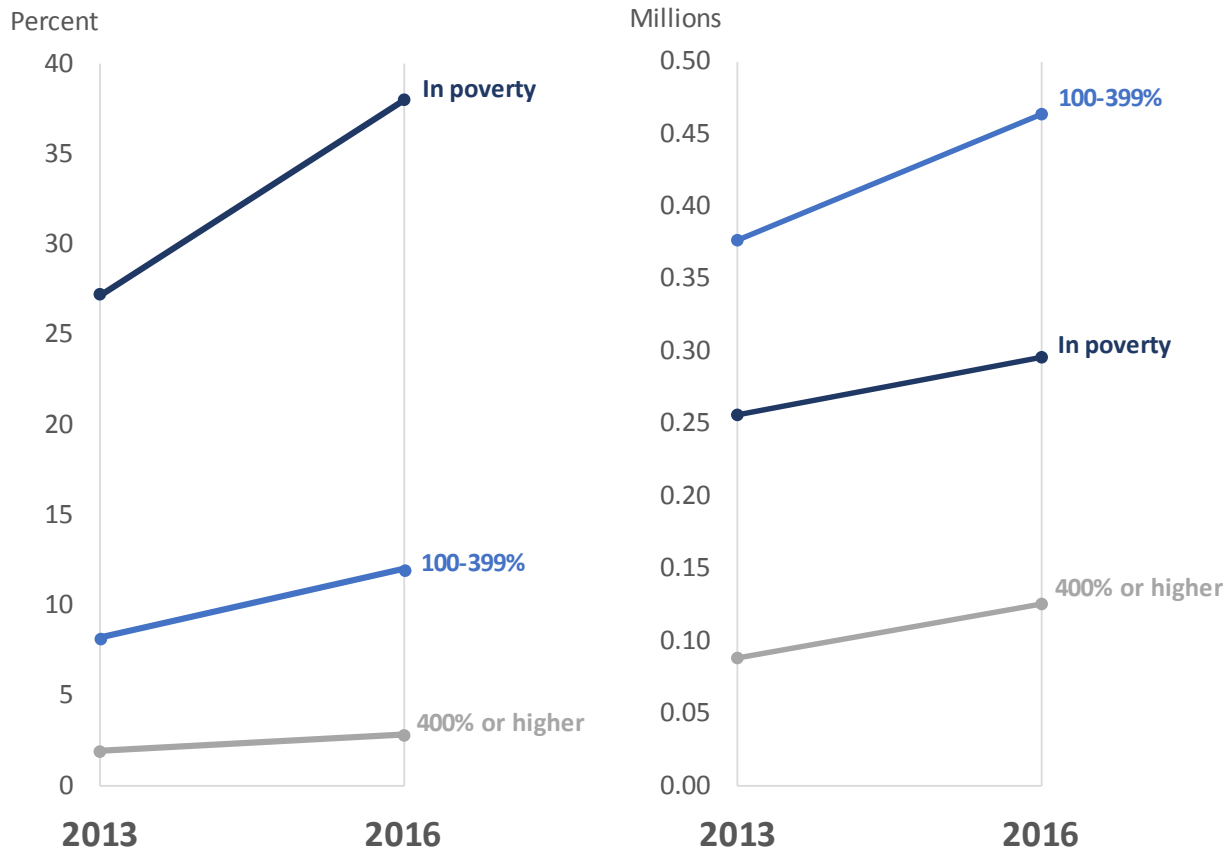
Source: U.S. Census Bureau, American Community Surveys, 2013 to 2016.

For more information, see [www.census.gov/programs-surveys/acs/](http://www.census.gov/programs-surveys/acs/).



# Health Insurance Coverage of Veterans

## Working-Age Veterans Using Medicaid, by Income-to-Poverty Ratio: 2013 and 2016



Source: U.S. Census Bureau, American Community Surveys, 2013 to 2016.

For more information, see [www.census.gov/programs-surveys/acs/](http://www.census.gov/programs-surveys/acs/).

# Accessing estimates

## Health insurance website:

<http://www.census.gov/topics/health/health-insurance.html>

- CPS detailed tables
- CPS historical tables
- ACS historical tables (2008 to 2016)
- Blogs, maps, and interactive infographics
- Also: Publications and working papers

## American FactFinder:

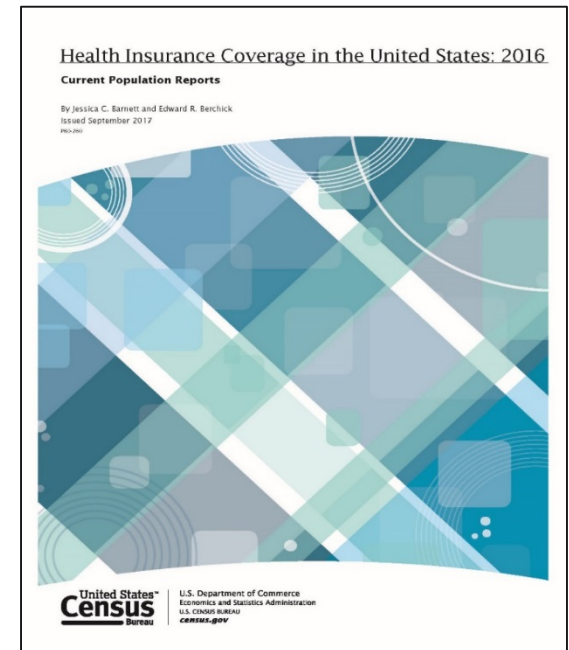
<http://www.census.gov/topics/health/health-insurance.html>

- Uninsured rate
- Characteristics of the uninsured
- Private / public coverage rates

## CPS Table Creator:

<http://www.census.gov/cps/data/cpstablecreator.html>

- Tools to create customized tables from the CPS



# Health insurance website:

<http://www.census.gov/topics/health/health-insurance.html>

**Table HIC-4\_ACS. Health Insurance Coverage Status and Type of Coverage by State All People: 2008 to 2016**

Note: Numbers in thousands. Civilian noninstitutionalized population. Margins of error calculated using replicate weights.

State	Coverage	2016				2015				Estimate	Margin of Error
		Estimate	Margin of Error	Percent	Margin of Error	Estimate	Margin of Error	Percent	Margin of Error		
UNITED STATES	Total	318,176	15	100.0	Z	316,451	15	100.0	Z	313,890	15
	Any coverage	290,872	158	91.4	0.1	286,693	176	90.6	0.1	277,220	176
	Uninsured	27,304	162	8.6	0.1	29,758	179	9.4	0.1	36,670	179
	Private	215,859	369	67.8	0.1	213,514	344	67.5	0.1	208,333	344
	Employer-based	173,907	325	54.7	0.1	172,292	309	54.4	0.1	170,265	309
	Direct-purchase	44,815	187	14.1	0.1	43,633	174	13.8	0.1	40,215	174
	TRICARE	8,566	73	2.7	Z	8,415	68	2.7	Z	8,311	68
	Public	112,688	205	35.4	0.1	109,874	176	34.7	0.1	104,228	176
	Medicaid	66,357	208	20.9	0.1	64,739	196	20.5	0.1	60,346	196
	Medicare	54,126	60	17.0	Z	52,694	63	16.7	Z	51,112	63
VA Care	7,291	44	2.3	Z	7,044	43	2.2	Z	6,911	43	
ALABAMA	Total	4,783	2	100.0	Z	4,781	1	100.0	Z	4,767	1
	Any coverage	4,348	14	90.9	0.3	4,297	16	89.9	0.3	4,188	16
	Uninsured	435	14	9.1	0.3	484	16	10.1	0.3	579	16
	Private	3,249	24	67.9	0.5	3,198	26	66.9	0.5	3,132	26
	Employer-based	2,560	26	53.5	0.5	2,545	25	53.2	0.5	2,525	25
	Direct-purchase	712	16	14.9	0.3	677	15	14.2	0.3	610	15
	TRICARE	215	10	4.5	0.2	208	10	4.3	0.2	211	10

# American FactFinder:

<http://www.census.gov/topics/health/health-insurance.html>

Subject	Miami-Dade County, Florida			
	Total Civilian Noninstitutionalized Population		Uninsured Population	
	Estimate	Margin of Error	Estimate	Margin of Error
Total population	2,686,274	+/-2,303	449,995	+/-17,781
<b>AGE</b>				
Under 18 years	20.5%	+/-0.1	7.8%	+/-0.9
Under 6 years	7.0%	+/-0.1	2.0%	+/-0.5
6 to 17 years	13.5%	+/-0.1	5.9%	+/-0.8
18 to 64 years	63.7%	+/-0.1	89.5%	+/-1.0
18 to 24 years	8.6%	+/-0.1	12.3%	+/-0.9
25 to 34 years	14.3%	+/-0.1	23.5%	+/-1.2
35 to 44 years	13.8%	+/-0.1	21.6%	+/-1.1
45 to 54 years	14.8%	+/-0.1	18.2%	+/-0.8
55 to 64 years	12.0%	+/-0.1	13.9%	+/-0.9
65 years and older	15.8%	+/-0.1	2.6%	+/-0.5
65 to 74 years	8.5%	+/-0.1	2.0%	+/-0.5
75 years and older	7.3%	+/-0.1	0.6%	+/-0.2
Median age (years)	39.8	+/-0.2	37.5	+/-0.6
<b>SEX</b>				
Male	48.2%	+/-0.1	51.7%	+/-1.3
Female	51.8%	+/-0.1	48.3%	+/-1.3
<b>RACE AND HISPANIC OR LATINO ORIGIN</b>				

# ACS Public Use Data Release: 2016 Estimates

## Public use Microdata Sample (PUMS) available October 19

- 1% public use microdata sample (1% of population)
- The smallest identifiable geographic unit is the Public Use Microdata Area (PUMA,) containing at least 100,000 persons
  - PUMAs are generally groups of counties or parts of counties, but there are exceptions
  - PUMAs do not cross state boundaries

# Upcoming ACS Data Releases: 5-Year

2012-2016 5-year estimates for all geographic areas

- American FactFinder release: **December 7**
- PUMS: January 18

The 3-year ACS data products are discontinued; there will *not* be estimates for 2014-2016

## 1-Year Supplemental Estimates

Limited set of 1-year AFF tables for geographies with population > 20,000

- K202701: Insured/uninsured by age
- K202702: Private coverage
- K202703: Public coverage

# Variance Replicate Estimate Tables


5-year 2012-2016 selected tables with 80 replicate variance estimates

- Advanced users can calculate margins of error (MOEs) when collapsing data within a table or across geographies
- More accurate MOE than approximation formula
- Available for select tables

# Statistical Testing Tool

<https://www.census.gov/programs-surveys/acs/data/data-tables-and-tools/statistical-testing-tool.html>

Excel spreadsheet that tests whether American Community Survey estimates are statistically different from one another.



**Purpose**  
This spreadsheet determines whether there is statistical evidence to conclude that two estimates are different from each another.

**Results**

Yes	Estimates are statistically different.
No	Estimates are NOT statistically different (or are statistically tied).
N/A	Statistical testing is not applicable for one or both of the estimates.

**How to Use this spreadsheet**

1. Download data from
2. Insert geography or
3. Insert the first number
4. Insert the corresponding
5. Put the second estimate
6. If the first estimate of the spreadsheet and
7. (Optional) To change to the desired confidence

[Overview](#)   
 [Instructions](#)   
 [Statistical Testing for Multiple Estimates](#)   
 [Worked Example](#)   
 [Contact Us](#)

	First Estimate	First Margin of Error (MOE)	Second Estimate	Second Margin of Error (MOE)	Statistically Different?
1 Place your Geography of statistical variable keyword in the gray column here. This text is here as an example. You may delete the text before using the spreadsheet.	48759	+/-2,395	28621	*****	Yes
	6.2	+/-0.1	6	+/-0.3	No
	22147046	+/-234,312	17997953	+/-199,112	Yes
	-	**	27047	+/-230	N/A

**Example**  
Suppose you want to know if the number of people over time (year to year) for two different years was or was not statistically different.



# CPS NEW CONTENT

Implemented for the 2013 estimates

# Question Changes in 2014

(asking about calendar year 2013)

Complete redesign of health insurance coverage question series – based on over a decade of research

- Person design but collect information on other members with the same plan, reducing respondent burden
- For each type of coverage, monthly detail
- Ability to differentiate between different subtypes of direct purchase coverage

# Point-in-Time Estimates (February to April 2017)

## Comparison with National Health Interview Survey (NHIS)

Percentage (and standard error) of persons who lacked health insurance coverage at the time of interview, by age group, race/ethnicity (among persons aged 18–64), and survey data source: United States, 2016 and 2017

Selected characteristic	NHIS, January–March 2016 <sup>1</sup>	CPS, February–April 2016 <sup>2</sup>	2016 difference (percentage points)	NHIS, January–March 2017 <sup>1</sup>	CPS, February–April 2017 <sup>2</sup>	2017 difference (percentage points)
Age (years)						
All ages	8.6 (0.33)	9.6 (0.11)	*-1.0	8.8 (0.35)	9.6 (0.10)	*-0.8
Under 65	10.0 (0.39)	11.1 (0.13)	*-1.1	10.3 (0.41)	11.1 (0.12)	-0.8
Under 18	5.0 (0.46)	6.4 (0.19)	*-1.4	5.3 (0.61)	6.2 (0.17)	-0.9
18–64	11.9 (0.47)	12.9 (0.15)	*-1.0	12.1 (0.43)	12.9 (0.14)	-0.8
18–24	13.7 (1.06)	13.8 (0.39)	-0.1	13.3 (0.93)	13.1 (0.33)	0.2
19–25	14.9 (1.10)	15.0 (0.39)	-0.1	14.9 (0.96)	14.3 (0.36)	0.6
25–34	15.9 (0.74)	16.9 (0.31)	-1.0	17.0 (0.76)	17.1 (0.35)	-0.1
35–44	14.3 (0.95)	14.3 (0.33)	0.0	13.1 (0.82)	13.9 (0.30)	-0.8
45–64	8.1 (0.45)	10.0 (0.18)	*-1.9	8.7 (0.63)	10.2 (0.19)	*-1.5
65 and over	0.5 (0.12)	1.1 (0.08)	*-0.6	0.7 (0.15)	1.3 (0.09)	*-0.6
Race/ethnicity <sup>3</sup>						
Aged 18–64:						
Hispanic or Latino	24.5 (1.31)	23.0 (0.47)	1.5	24.1 (1.38)	22.9 (0.47)	1.2
Not Hispanic or Latino:						
White, single race	8.4 (0.47)	9.8 (0.18)	*-1.4	8.5 (0.49)	9.8 (0.16)	*-1.3
Black, single race	13.0 (1.34)	15.5 (0.42)	-2.5	14.2 (1.18)	15.3 (0.43)	-1.1

# Offer and Take-up of Employer-sponsored Coverage

<http://www.census.gov/data/datasets/time-series/demo/health-insurance/cps-asec-research-files.html>

<http://www.census.gov/library/working-papers/2016/demo/Abramowitz-2016.html>

Individuals employed at time of interview (February to April) but without employer-sponsored coverage

- Does employer offer coverage?
- If offered was person eligible to purchase?
- If offered, reason for not purchasing if eligible or reason why ineligible

# Current Post-Collection Processing

For timely data release, used current processing methods from previous years

Current processing system not ideal for the current data structure:

- Not able to differentiate some coverage types (For example, subsidized Marketplace from non-Marketplace direct purchase)
- Needs the data at an annual level, not month-to-month

Developing new processing system

We need to reconcile who has coverage and type, policyholder, and details

- The redesigned instrument is very flexible and needs to be translated into useful output
- Information could be missing at the item, individual, or household level

# Available in Research Files

Point-in-time coverage

Offers and take-up of employer-sponsored insurance

More detail on out-of-household coverage (employer-sponsored or direct-purchase)

<http://www.census.gov/data/datasets/time-series/demo/health-insurance/cps-asec-research-files.html>

# Not Available Yet

Exchange participation

Receipt of subsidies

Plan changes during year

# SHADAC RESOURCES



# STATE HEALTH COMPARE

Explore Data

About

< Share

✉ Email

↓ Download Data



Use **State Health Compare** to create customized reports for state-level health estimates

Explore the Data >

## Data Highlight

Since 2000, U.S. **sales of the opioid painkiller oxycodone tripled**. In six states—KS, NY, OK, TN, UT, WY—they have **grown more than 5 times**.

<http://statehealthcompare.shadac.org/>

## Explore Data

Show available breakdowns (Age, Education, Race/Ethnicity...)

### Health Insurance Coverage

Coverage Type

Workers in Establishments that Offer Coverage

---

Cost of Care - Dollars

People with High Medical Care Cost Burden

Average Annual ESI Premium

Employee Contributions to Premiums

High Deductible Plans

Medicaid Expenses as Percent of State Budget

Costs of Potentially Preventable Hospitalizations

---

Cost of Care - Behavior Changes

Made Changes to Medical Drugs

Trouble Paying Medical Bills

Needed but Delayed Medical Care

### Access to Care

Adults that could get Medical Care when needed

Adults with Personal Doctor

No Trouble Finding Doctor

Told that Provider Accepts Insurance

Had Usual Source of Medical Care

---

### Utilization of Care

Had General Doctor or Provider Visit

Had Emergency Department Visit

Spent the Night in a Hospital

---

### Quality of Care

Adult Cancer Screenings

Adult Potentially Preventable Hospitalizations

Child Potentially Preventable Hospitalizations

## Explore Data

Show available breakdowns (Age, Education, Race/Ethnicity...)

### Health Insurance Coverage

Coverage Type 

Workers in Establishments that Offer Coverage

---

Cost of Care - Dollars

People with High Medical Care Cost Burden

Average Annual ESI Premium

Employee Contributions to Premiums

High Deductible Plans

Medicaid Expenses as Percent of State Budget

Costs of Potentially Preventable Hospitalizations

---

Cost of Care - Behavior Changes

Made Changes to Medical Drugs

Trouble Paying Medical Bills

Needed but Delayed Medical Care

### Access to Care

Adults that could get Medical Care when needed

Adults with Personal Doctor

No Trouble Finding Doctor

Told that Provider Accepts Insurance

Had Usual Source of Medical Care

---

### Utilization of Care

Had General Doctor or Provider Visit

Had Emergency Department Visit

Spent the Night in a Hospital

---

### Quality of Care

Adult Cancer Screenings

Adult Potentially Preventable Hospitalizations

Child Potentially Preventable Hospitalizations

# Health Insurance Coverage Type

- Map
- Rank
- Trend
- Bar
- Table

## BREAKDOWN

Total

## TIMEFRAME (SELECT 1)

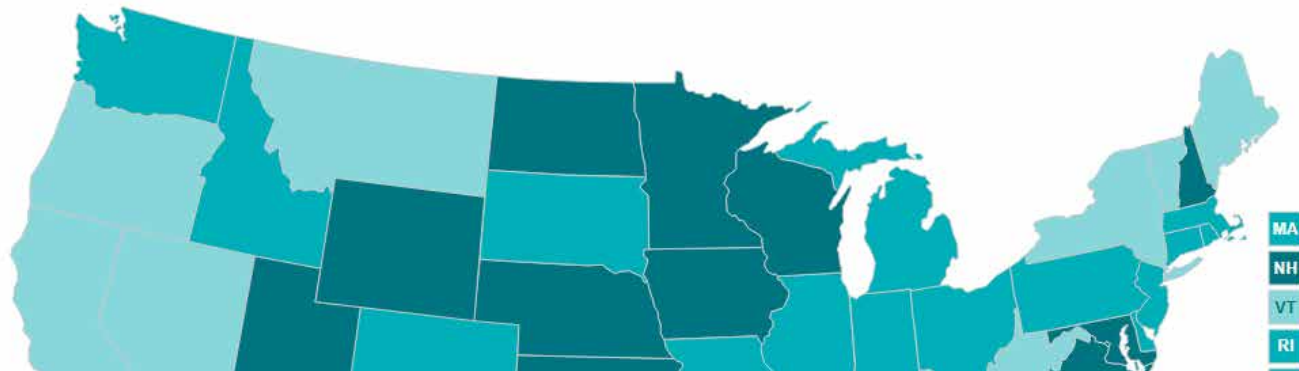
2015

## COVERAGE TYPE (SELECT 1)

Private

## DATA TYPE

- Percent
- Number



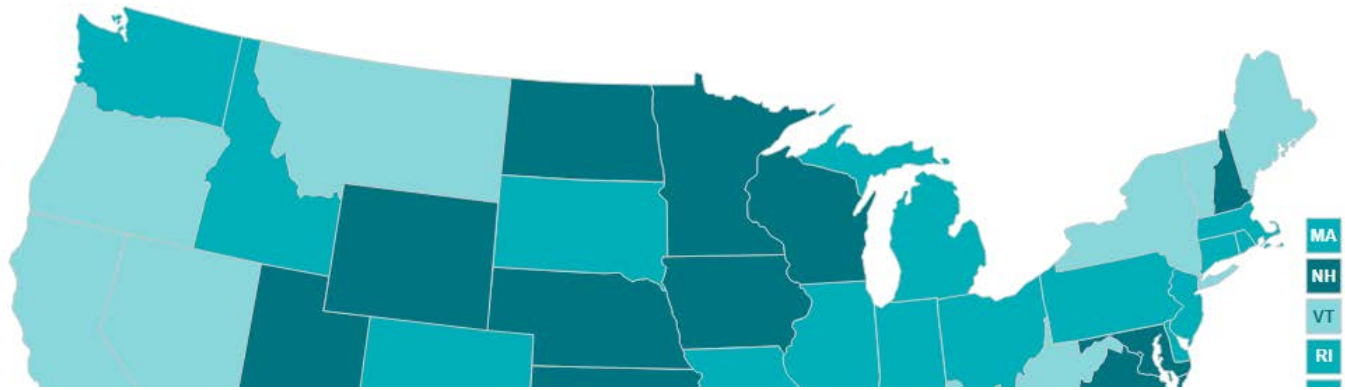
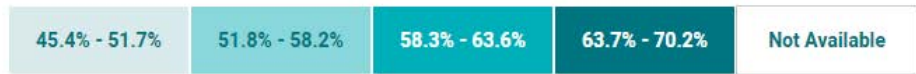
# Health Insurance Coverage Type

- Map
- Rank
- Trend
- Bar
- Table

## BREAKDOWN

- Total
- Total
- Age
- Citizenship

Number

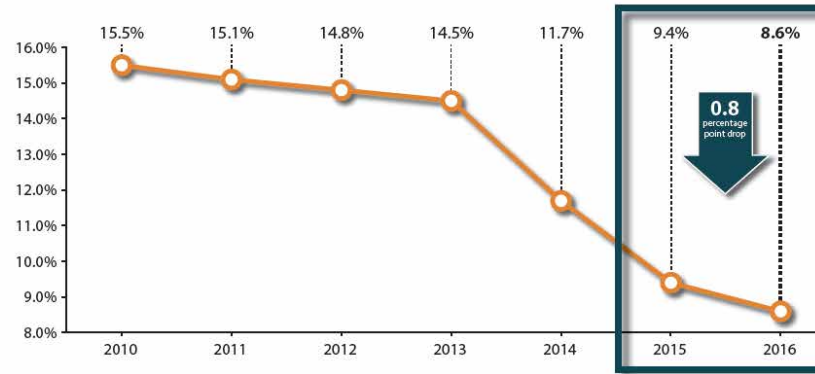


# UNINSURED RATE FELL NATIONALLY AND IN 39 STATES IN 2016

ESTIMATES FROM THE  
AMERICAN COMMUNITY SURVEY (ACS)

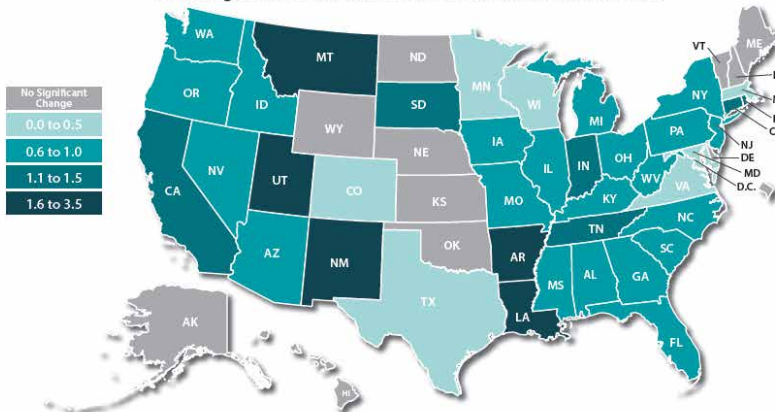
New data from the ACS show that the nation's uninsured rate declined significantly in 2016, falling 0.8 percentage points from 9.4% in 2015 to 8.6% in 2016. This drop in uninsurance has continued each year since the historic drop between 2013 and 2014. Uninsurance also fell significantly in 39 states in 2016. Eleven states saw no significant change in uninsurance, and no state reported a significant increase.

## NATIONAL UNINSURED RATE OVER TIME, 2010-2016



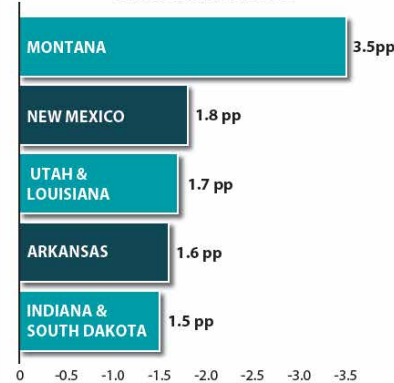
## DECLINE IN STATE UNINSURED RATES, 2015-2016

Percentage Point Decline in State Uninsurance Rates from 2015-2016

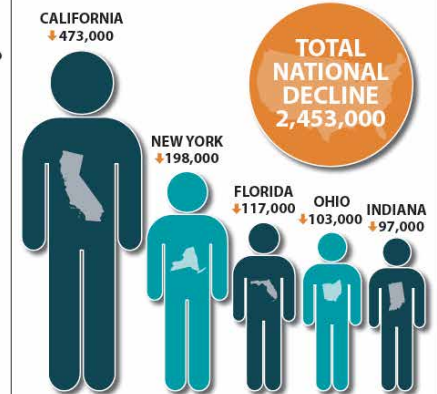


## TOP STATE DECLINES IN UNINSURED, 2015-2016

Top Five Percentage-Point Declines in Uninsured Rate, 2015-2016



Top Five Declines in Number of Uninsured, 2015-2016



# 2016 ACS Tables: State & County Estimates

Tables from American FactFinder (AFF) showing 2015-2016 change in uninsured rates

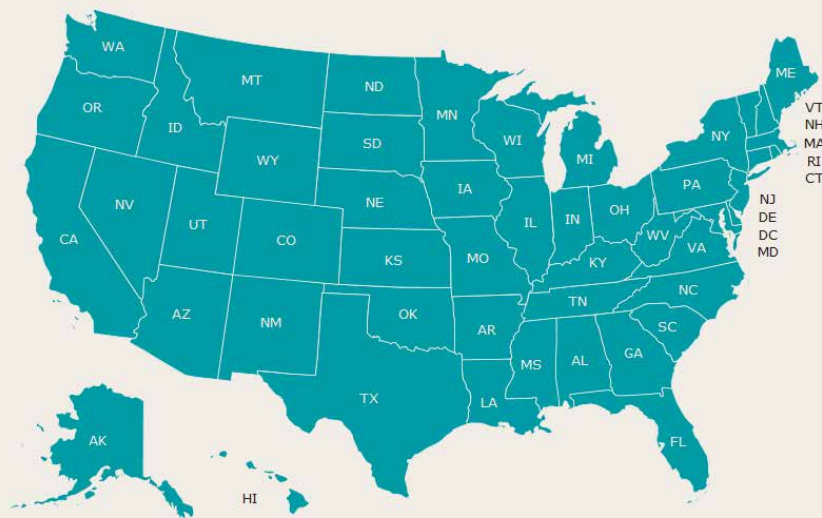
[www.shadac.org/2016ACS\\_State&CountyTables](http://www.shadac.org/2016ACS_State&CountyTables)

## 2016 ACS Tables: State & County Uninsured Rates, with Comparison Year 2015

September 2017:

The map on this page links to tables containing state and county uninsurance estimates for 2016. These estimates come from the 2016 American Community Survey (ACS) via the U.S. Census Bureau's American FactFinder (AFF) tool and were released on September 14, 2017.

**Click on a state** to see state and county uninsurance rates by characteristics (for example, age, race/ethnicity, and poverty level) for 2016 and comparison year 2015. *Due to sample size constraints, single-year ACS estimates are available at the county level only for counties with a population greater than 65,000.*



# 2016 State & County Tables, Example

Subject	2015		2016						
	Population	% Uninsured	Population	% Uninsured					
<b>Total civilian noninstitutionalized population</b>									
United States	316,450,569	9.4	318,175,867	8.6*					
Minnesota	5,431,894	4.5	5,462,438	4.1*					
<b>Age</b>									
Under 18 years	1,280,978	3.1	1,286,323	3.4					
18 to 64 years	3,376,832	6.0	3,375,664	5.3*					
19 to 25 years	493,075	8.3	499,225	6.4*					
65 years and older	774,084	0.3	800,451	0.2					
<b>Race/Ethnicity</b>									
White alone	4,570,440	3.6	4,552,519	3.2*					
Black or African American alone	312,598	7.2	323,107	7.2					
American Indian and Alaska Native alone	52,876	15.9	60,807	16.7					
Asian alone	258,148	6.5	258,067	3.5*					
Native Hawaiian and Other Pacific Islander alone	1,570	7.1	1,398	8.6					
Some other race alone	82,545	30.1	111,329	24.2*					
Two or more races									
Hispanic or Latino (of any race)									
White alone, not Hispanic or Latino									
<b>Citizenship Status</b>									
Native born	<b>All People</b>				<b>Children 0-17</b>				
	2015		2016		2015		2016		
Naturalized	Population	%	Population	%	Population	%	Population	%	
	United States	316,450,569	9.4	318,175,867	8.6*	73,491,931	4.8	73,503,793	4.5*
Not a citizen	Minnesota	5,431,894	4.5	5,462,438	4.1*	1,280,978	3.1	1,286,323	3.4
	Anoka	341,864	3.7	343,566	3.7	83,321	1.2	83,242	2.2*
Blue Earth	65,183	3.0	65,698	4.7*	12,619	0.9	12,627	2.5	
Carver	98,469	2.8	99,996	2.5	27,213	3.0	26,717	4.4	
Dakota	412,819	3.7	415,495	3.7	102,811	2.4	102,930	3.3	
Hennepin	1,214,371	5.4	1,224,030	4.3*	271,143	3.6	272,504	3.5	
Olmsted	149,572	3.5	151,431	4.9	37,377	2.2	37,666	3.2	
Ramsey	533,926	5.8	536,323	4.5*	125,650	4.4	126,306	3.5	
Rice	62,829	4.9	63,016	4.1	14,468	5.1	14,077	2.3	
St. Louis	197,280	3.4	196,892	2.9	38,170	2.1	37,920	1.5	
Scott	139,986	4.3	141,859	3.5	40,311	3.8	40,359	3.4	
Sherburne	89,716	2.3	91,503	2.9	25,382	0.4	25,952	1.2	
Stearns	153,565	3.5	154,571	3.0	35,293	0.9	35,555	1.2	
Washington	248,454	3.2	249,888	2.4	62,367	1.4	62,931	2.6	
Wright	130,572	3.4	131,763	2.3	37,419	2.9	37,287	1.2	



# MN Population Center Releases (IPUMS)



Integrated Public Use Microdata Series  
census microdata for social and economic research

CPS data will be available soon

ACS data files will be released in about 1-2 weeks after available from the Census Bureau

SHADAC Health Insurance Unit (HIU) and Federal Poverty Guidelines (FPG) variables for CPS and ACS will be available soon

<http://www.ipums.org>

# Contact Information

Direct inquires to  
Joanna Turner, [turn0053@umn.edu](mailto:turn0053@umn.edu)  
or [shadac@umn.edu](mailto:shadac@umn.edu)

