

# CHILDREN'S HEALTH INSURANCE COVERAGE NATIONWIDE AND IN THE STATES, 2016 TO 2017

*May 2019*



## Introduction

We used data from the American Community Survey (ACS) to examine: 1) changes in health insurance coverage from 2016 to 2017 for children nationwide and at the state level, and 2) state variation in uninsured rates for children in 2017. We tested statistical significance at the 95% confidence level. Visit [State Health Compare](#) to learn more about these estimates.

### Report Contents:

- 5 National Changes in Children's Health Insurance Coverage, 2016 to 2017
- 8 State Changes in Children's Health Insurance Coverage, 2016 to 2017
- 11 State Variation in Children's Uninsurance in 2017
- 15 State Variation in Children's Uninsurance by Income in 2017
- 19 State Variation in Children's Uninsurance by Race/Ethnicity in 2017
- 26 State Variation in Children's Uninsurance by Parental Education in 2017
- 33 Appendix: Data and Methods
- 34 Appendix: 50-State Comparison Tables

# Companion Documents

## 50-State Comparison Tables

Detailed 50-state tables allow for easy cross-state and national comparisons of children's coverage from 2016 to 2017, as well as state versus national comparisons of uninsured rates in 2017.

Appendix: Table 1

shadac

Children's Health Insurance Coverage, 2016 to 2017: Counts

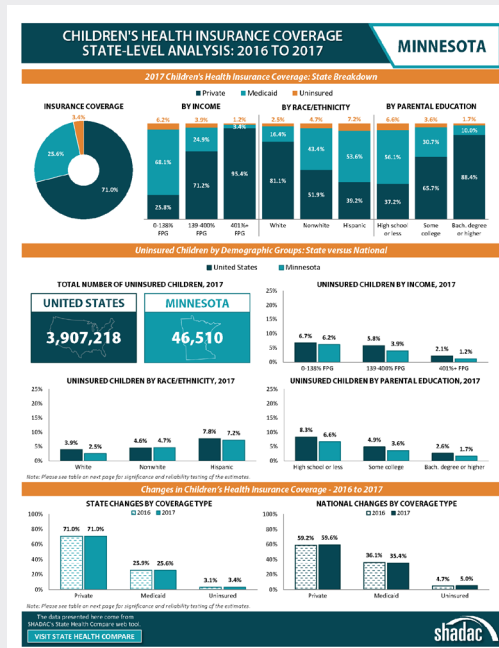
State	ESI Coverage			Individual Coverage			Medicaid			Uninsured		
	2016 Count	2017 Count	Percent Change	2016 Count	2017 Count	Percent Change	2016 Count	2017 Count	Percent Change	2016 Count	2017 Count	Percent Change
Alabama	58,120	57,508	-0.1%	42,161	58,733	+39.1%	489,797	491,057	+0.2%	31,212	36,221	+16.2%
Alaska	198,190	198,002	-0.1%	6,991	5,665	-18.7%	61,862	64,629	+4.5%	21,339	19,906	-6.7%
Arizona	842,779	881,264	+4.6%	107,387	95,467	-11.1%	642,813	616,629	-4.1%	133,948	138,973	+3.7%
Arkansas	339,052	337,605	-0.4%	102,802	123,100	+19.7%	360,801	363,781	+0.8%	38,797	35,661	-8.1%
California	4,691,678	4,812,903	+2.6%	5,546,022	5,783,987	+4.2%	4,406,224	3,869,812	-12.0%	308,371	303,373	-1.6%
Colorado	786,273	792,668	+0.8%	100,281	96,922	-3.3%	453,262	437,961	-3.4%	39,989	36,661	-8.3%
Connecticut	491,275	489,502	-0.4%	42,285	38,152	-9.6%	247,346	237,903	-3.8%	26,617	26,212	-1.5%
Delaware	126,894	134,156	+5.6%	11,672	11,637	-0.3%	65,987	65,211	-1.2%	8,263	7,591	-8.0%
D.C.	42,543	39,644	-6.8%	2,139	10,346	+450%	52,466	60,711	+15.5%	4,296*	1,831	-56.9%
Florida	1,964,952	1,935,689	-1.5%	365,439	352,855	-3.4%	1,379,315	1,407,538	+2.0%	287,528	320,933	+11.6%
Georgia	1,313,326	1,387,490	+5.7%	115,613	121,492	+5.1%	1,156,272	1,164,711	+0.7%	176,655	184,664	+4.5%
Hawaii	212,510	210,771	-0.8%	14,805	12,537	-15.3%	87,397	88,529	+1.3%	7,536	7,991	+6.0%
Idaho	218,811	211,223	-3.5%	41,465	39,753	-4.1%	181,322	171,119	-5.6%	24,889	24,699	-0.8%
Illinois	1,746,682	1,759,357	+0.7%	162,136	184,457	+13.8%	1,096,200	1,127,843	+2.9%	48,499	46,113	-5.1%
Indiana	861,773	856,569	-0.6%	76,161	75,592	-0.7%	530,239	530,405	+0.0%	84,611	104,400	+23.3%
Iowa	461,269	466,920	+1.2%	39,260	46,549	+18.8%	229,519	230,935	+0.6%	16,502	20,911	+26.1%
Kansas	451,337	455,954	+1.0%	59,661	51,368	-13.0%	204,387	204,476	+0.0%	36,712	40,315	+9.8%
Kentucky	595,646	555,635	-6.7%	53,169	43,153	-18.3%	434,768	480,199	+10.4%	34,600	43,144	+24.4%
Louisiana	508,643	528,873	+4.0%	67,554	46,499	-31.2%	564,198	563,729	-0.1%	42,405	35,756	-15.2%
Maine	184,829	182,927	-1.0%	15,169	15,193	+0.2%	169,208	166,461	-1.6%	13,451	13,448	-0.0%
Maryland	874,934	881,797	+0.8%	74,002	58,374	-20.8%	424,474	414,666	-2.3%	47,549	57,315	+20.5%
Massachusetts	341,296	347,346	+1.8%	72,418	69,986	-3.4%	451,413	442,397	-2.0%	14,911	12,726	-14.0%
Michigan	1,541,748	1,513,316	-1.8%	166,118	151,622	-9.3%	797,441	776,764	-2.6%	71,011	66,152	-6.9%
Minnesota	877,472	895,901	+2.1%	86,396	71,863	-16.8%	351,288	349,520	-0.5%	42,911	46,130	+7.5%
Mississippi	326,261	325,601	-0.2%	39,541	41,139	+4.0%	360,212	358,797	-0.4%	36,371	35,156	-3.3%
Missouri	852,248	847,542	-0.6%	107,932	96,728	-10.4%	641,260	651,471	+1.6%	74,813	73,134	-2.3%
Montana	121,486	113,119	-6.8%	19,214	23,098	+20.2%	85,673	87,121	+1.7%	12,276	15,613	+27.2%
Nebraska	209,580	216,024	+3.1%	34,527	31,014	-9.3%	134,607	129,970	-3.4%	22,258	26,271	+18.0%
Nevada	381,250	386,461	+1.4%	43,481	33,362	-23.3%	236,972	231,129	-2.5%	45,011	53,948	+19.7%
New Hampshire	198,815	197,928	-0.5%	15,669	13,271	-15.3%	71,268	70,767	-0.7%	8,951	7,998	-10.6%
New Jersey	1,295,813	1,301,524	+0.4%	102,695	105,487	+2.7%	626,168	606,594	-3.1%	70,062	76,062	+8.6%
New Mexico	198,916	204,389	+2.8%	14,916	19,481	+30.6%	171,627	171,627	+0.0%	20,807	23,920	+15.0%
New York	2,301,151	2,313,377	+0.5%	295,512	288,099	-2.6%	1,705,961	1,660,586	-2.7%	114,529	122,256	+6.7%
North Carolina	3,266,090	3,235,196	-1.0%	184,693	184,196	-0.3%	2,895,168	2,852,161	-1.5%	132,900	138,839	+4.5%
North Dakota	114,241	123,437	+8.2%	17,961	14,605	-18.7%	31,508	32,162	+2.1%	18,334	12,727	-31.3%
Ohio	1,629,294	1,617,212	-0.7%	107,011	114,656	+7.2%	304,427	300,561	-1.3%	38,064	34,756	-8.4%
Oklahoma	471,653	480,704	+1.9%	58,709	54,122	-6.6%	415,696	406,267	-2.3%	76,053	77,726	+2.2%
Oregon	493,567	500,126	+1.3%	81,134	69,442	-13.7%	384,036	380,951	-0.8%	29,950	30,004	+0.2%
Pennsylvania	1,421,442	1,476,437	+3.9%	116,622	147,048	+25.7%	921,521	914,499	-0.8%	133,649	127,008	-4.9%
Rhode Island	188,374	188,011	-0.2%	32,223	31,430	-2.5%	146,272	149,911	+2.5%	14,611	14,912	+2.1%
South Carolina	551,203	556,413	+1.0%	64,539	53,156	-17.3%	486,664	483,288	-0.7%	48,189	42,170	-12.5%
South Dakota	134,402	134,289	-0.1%	19,574	17,188	-12.2%	42,448	39,524	-6.9%	10,350	11,196	+8.2%
Tennessee	836,206	841,461	+0.6%	91,402	77,220	-15.6%	644,366	637,651	-1.0%	58,630	70,774	+20.7%
Texas	3,576,390	3,715,211	+3.9%	440,911	378,011	-14.7%	2,849,965	2,837,666	-0.4%	249,953	233,121	-6.7%
Utah	666,959	638,967	-4.2%	94,609	82,438	-12.8%	571,955	548,828	-4.0%	54,541	67,134	+23.1%
Vermont	166,902	162,947	-2.4%	4,237	3,848	-9.4%	162,467	161,917	-0.3%	13,911	12,911	-7.2%
Virginia	1,281,229	1,275,479	-0.4%	124,203	125,176	+0.8%	476,389	483,911	+1.6%	102,221	95,665	-6.4%
Washington	893,586	906,189	+1.4%	104,287	104,287	+0.0%	789,299	789,299	+0.0%	52,235	52,666	+0.8%
West Virginia	187,342	203,635	+8.7%	12,246	11,555	-5.6%	181,371	173,491	-4.3%	7,174	10,683	+47.6%
Wisconsin	893,676	902,603	+1.0%	145,460	133,911	-8.0%	365,191	358,101	-2.0%	46,233	50,711	+9.7%
Wyoming	109,920	88,715	-19.3%	12,423	4,334	-65.1%	21,799	33,964	+55.4%	11,443	14,424	+25.2%

Notes: Significant differences between periods are indicated by an asterisk (\*). State may not add up precisely due to rounding. Estimates with relative standard errors greater than 30% are indicated by \*. Please see the methods section for variable definitions. ESI: Employer-sponsored insurance. Source: 2016-2017 American Community Survey 1-year data by SHADAC.

STATE HEALTH ACCESS DATA ASSISTANCE CENTER 34

## State Profiles

Two-page "at a glance" graphic profiles detail children's coverage for each state, including coverage changes from 2016 to 2017 and comparison between state and national uninsured rates for 2017.



Both of these companion documents are available at [www.shadac.org/KidsReport2017](http://www.shadac.org/KidsReport2017)

## Executive Summary

- This report examines national and state-level changes in health insurance coverage for children from 2016 to 2017, and looks at state variation in uninsurance among children in 2017. We analyze coverage among children as a whole as well as by race/ethnicity, income, and parental education.
- The national rate of uninsured children increased in 2017, ending the steady decline in uninsured children that occurred between 2008 and 2016. This increase in uninsurance was significant across demographic groups.
- The nationwide increase in uninsurance in 2017 was driven by decreases in Medicaid and individual coverage, which outweighed gains in employer-sponsored insurance (ESI) coverage.
- State changes in children's health insurance coverage from 2016 to 2017 reflected the national picture, with uninsurance and ESI coverage increasing and Medicaid and individual coverage decreasing.
- State-level disparities in uninsured rates among children were substantial in 2017, with uninsurance varying widely within and across states both among children as a whole and by income, race/ethnicity, and parental education. At the state level, increases in uninsurance were particularly prevalent among Nonwhite children.

### Data and Methods

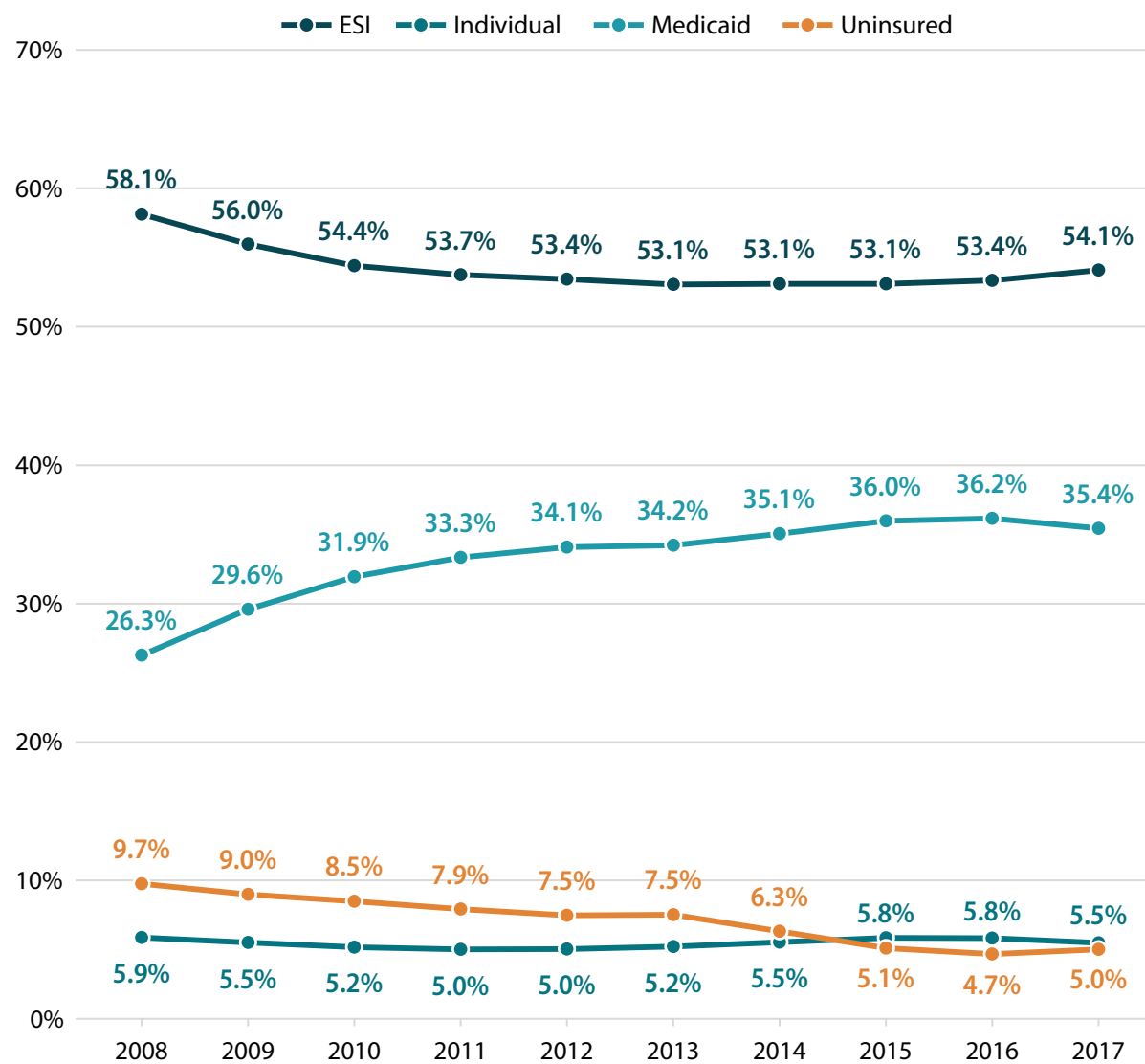
Information on the data source and methodological approach used in this report can be found in the Data and Methods appendix on page 33.

# **NATIONAL CHANGES IN CHILDREN'S HEALTH INSURANCE COVERAGE, 2016 TO 2017**

# Uninsurance Increased Nationwide among Children in 2017, Disrupting Years-Long Downward Trend

- Uninsurance rates increased significantly among children at the national level between 2016 and 2017, growing from 4.7% to 5.0%. The number of uninsured children nationwide increased from approximately 3.6 million in 2016 to 3.9 million in 2017.
- This increase interrupted a near decade-long decline in children's uninsurance, where the rate dropped by more than half, from 9.7% in 2008 to 4.7% in 2016 (-5.1 points).
- The 2017 increase in children's uninsurance was driven by decreases in both Medicaid coverage (-0.7 points) and individual coverage (-0.4 points), which together outweighed a rise in ESI coverage (0.7 points).

**Children's Health Insurance Coverage in the United States, 2008 to 2017**

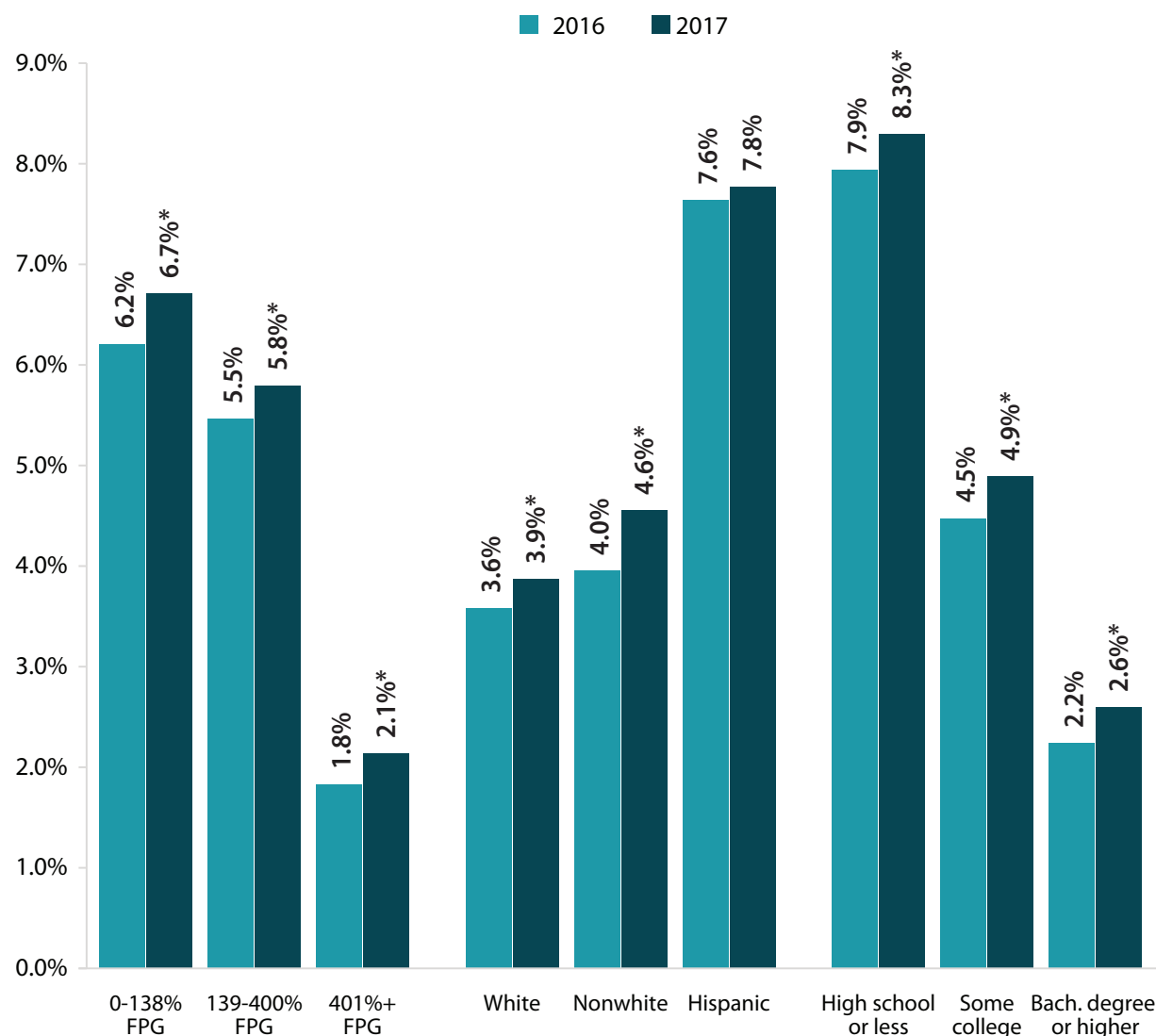


Source: American Community Surveys as analyzed by SHADAC.

# Uninsurance Increase Affected Multiple Demographic Groups Nationwide

- The national increase in the rate of uninsured children from 2016 to 2017 affected all demographic groups, with significant uninsurance increases seen among all income, education, and racial/ethnic subgroups with the exception of Hispanic children.

### Uninsured Children by Demographic Group, 2016 to 2017



**Note:** Significant difference between 2016 and 2017 is indicated by \* (95% confidence level).  
**Source:** American Community Surveys as analyzed by SHADAC.

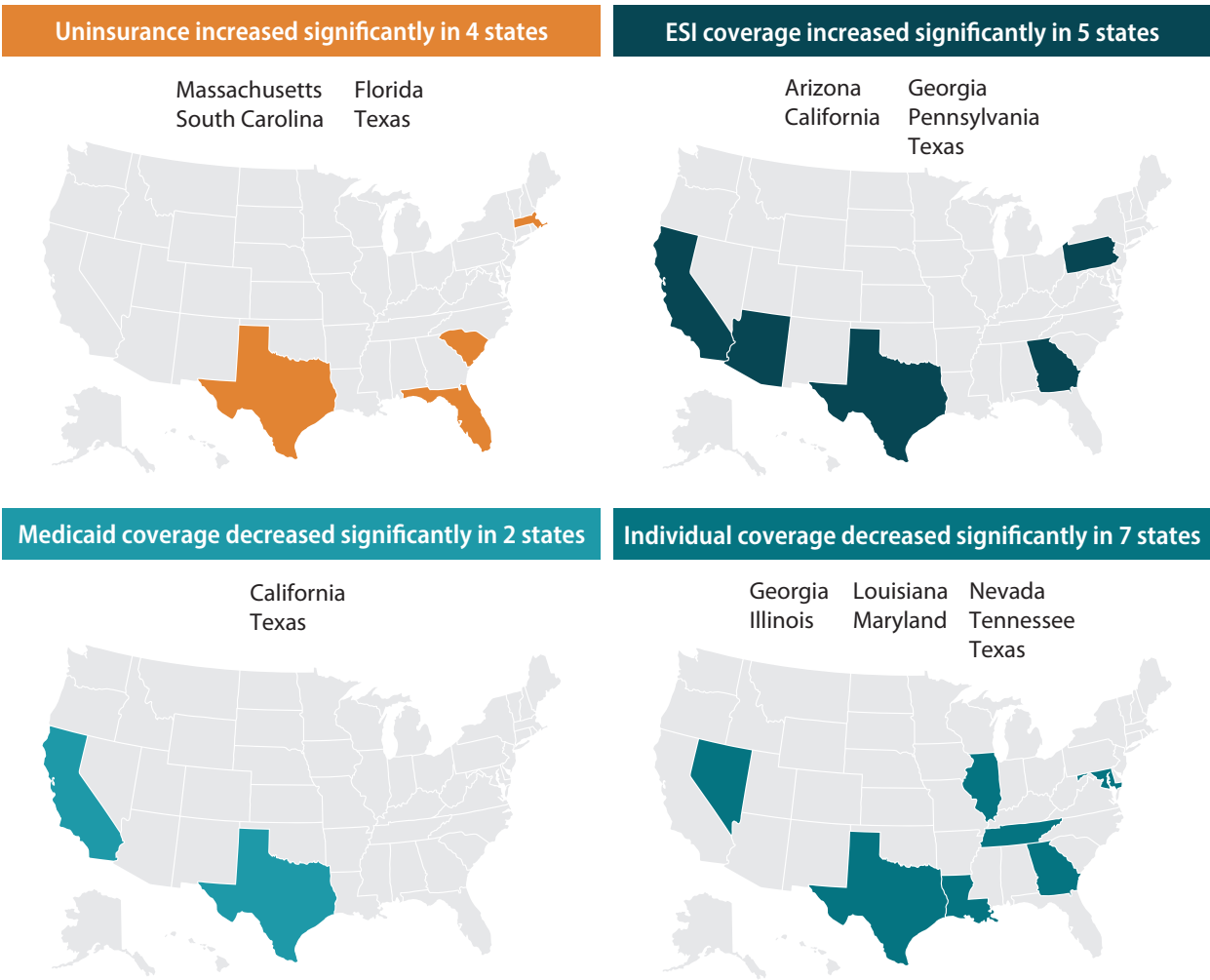
# STATE CHANGES IN CHILDREN'S HEALTH INSURANCE COVERAGE, 2016 TO 2017



# State Coverage Changes in 2017 Reflect National Picture

- At the state level, changes in children’s health insurance coverage reflected the national picture of increases in uninsurance and ESI coverage, along with decreases in Medicaid and individual coverage.
- Uninsurance increased significantly in four states, and decreased in none.
- ESI coverage went up significantly in five states and decreased in none.
- Medicaid coverage dropped significantly in two states and increased in none.
- Individual coverage decreased significantly in seven states and increased in none.

## Snapshot of State-Level Coverage Changes, 2016 to 2017



Source: American Community Surveys as analyzed by SHADAC.

# Multiple Demographic Groups across 17 States Saw Uninsurance Increases in 2017

- Across demographic groups by income, race/ethnicity, and parental education, uninsurance increased among children in 17 states, while decreasing in only two states.
- Seven states showed increased uninsurance among children across multiple demographic categories: Connecticut, Florida, Illinois, Nevada, South Carolina, Tennessee, and Texas.

## State-Level Changes in Uninsured Children by Demographic Group, 2016-2017



	Income			Race/Ethnicity			Parental Education		
	0-138% FPG	139-400% FPG	401%+ FPG	White	Nonwhite	Hispanic	High school or less	Some college	Bach. degree or higher
Arizona									
Arkansas									
Connecticut									
D.C.									
Florida									
Illinois									
Indiana									
Iowa									
Massachusetts									
Missouri									
Nevada									
New Jersey									
North Carolina									
North Dakota									
Oregon									
South Carolina									
South Dakota									
Tennessee									
Texas									
Utah									

Source: American Community Surveys as analyzed by SHADAC.

# STATE VARIATION IN CHILDREN'S UNINSURANCE IN 2017



## State Uninsured Rates among All Children Ranged from 1.4% to 10.7% in 2017

- State rates of uninsured children ranged from 1.4% in Vermont and the District of Columbia, to 10.7% in Texas.
- Nearly half (46%) of uninsured children in the United States lived in just five states (Texas, Wyoming, Alaska, Arizona, and Oklahoma).
- Texas had the highest number of uninsured children at over 800,000.

### Uninsured Children in the States, 2017

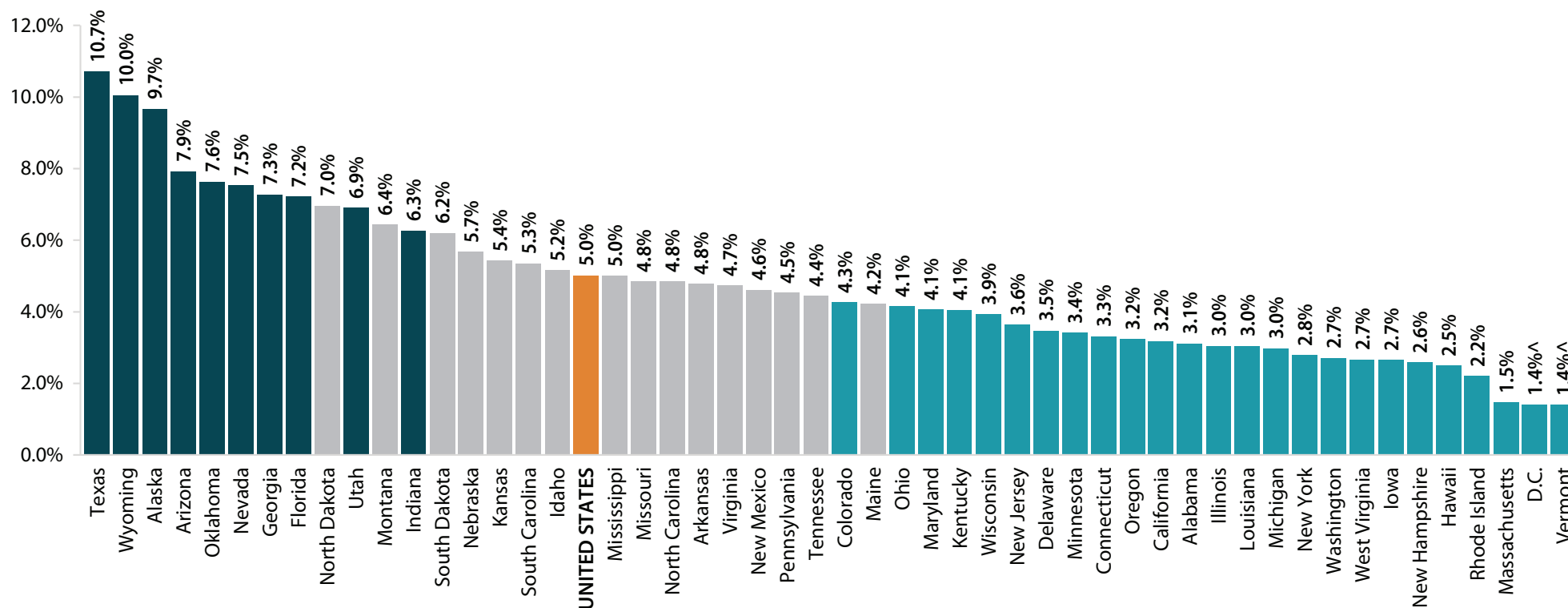
States with the LOWEST RATES of uninsured children		Rate
1. Vermont		1.4% <sup>^</sup>
2. District of Columbia		1.4% <sup>^</sup>
3. Massachusetts		1.5%
4. Rhode Island		2.2%
5. Hawaii		2.5%
<b>National RATE of uninsured children</b>		<b>5.0%</b>
States with the HIGHEST RATES of uninsured children		Rate
1. Texas		10.7%
2. Wyoming		10.0%
3. Alaska		9.7%
4. Arizona		7.9%
5. Oklahoma		7.6%
States with the LARGEST NUMBER of uninsured children		
1. Texas		833,178
2. Florida		320,913
3. California		303,373
4. Georgia		194,464
5. Arizona		136,973
<b>National NUMBER of uninsured children</b>		<b>3,907,218</b>

**Note:** Estimates with relative standard errors greater than 30% are indicated by <sup>^</sup>.  
**Source:** American Community Surveys as analyzed by SHADAC.

# Rates of Uninsured Children in 2017 were Significantly above the National Average in 10 States, below in 25

## Uninsured Children: State vs. National Rates, 2017

■ Significantly above the national average   
 ■ Not significantly different from the national average   
 ■ Significantly below the national average



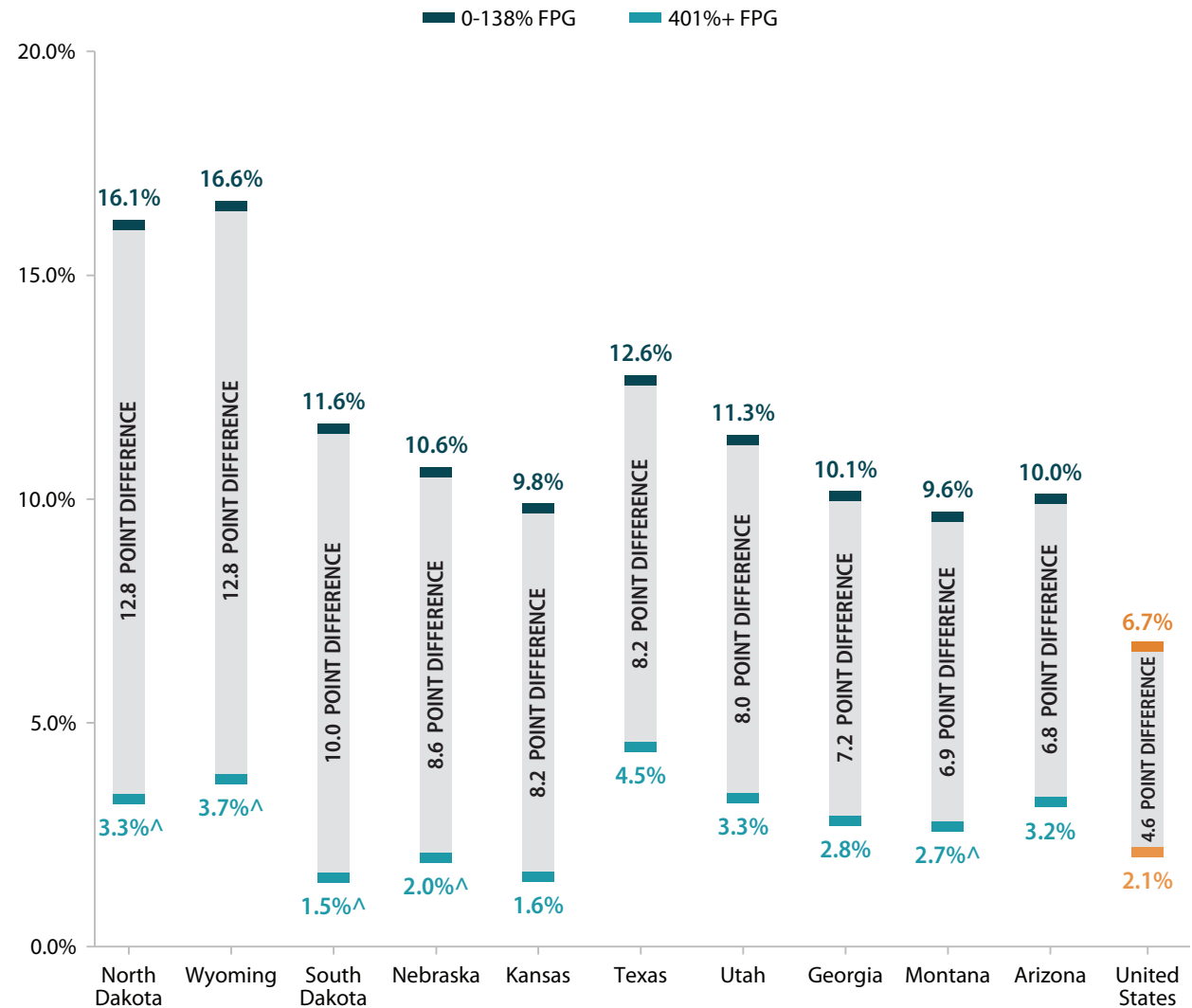
**Note:** Estimates with relative standard errors greater than 30% are indicated by <sup>^</sup>.  
**Source:** American Community Surveys as analyzed by SHADAC.

# STATE VARIATION IN CHILDREN'S UNINSURANCE BY INCOME IN 2017

# Uninsurance by Income: State-Level Disparities between Low- and High-Income Children in 2017

- In three states (North Dakota, South Dakota, and Wyoming) the uninsured rate for low-income children (0-138% of Federal poverty guideline; FPG) was 10 or more points above the rate for high-income children (401%+ FPG).
- Large disparities between uninsured rates for low-income and high-income children occurred in all regions of the United States, with the exception of the Northeast.

### States with the Largest Differences in Uninsured Rates between Low- and High-Income Children, 2017



**Note:** Estimates with relative standard errors greater than 30% are indicated by <sup>^</sup>.  
**Source:** American Community Surveys as analyzed by SHADAC.



# State Uninsured Rates among Low-Income Children Ranged from 1.2% to 16.6% in 2017

- In two states (Wyoming and North Dakota) more than 16% of low-income children were uninsured in 2017.
- In three states (Vermont, Massachusetts, and West Virginia) less than 3% of low-income children were uninsured in 2017.

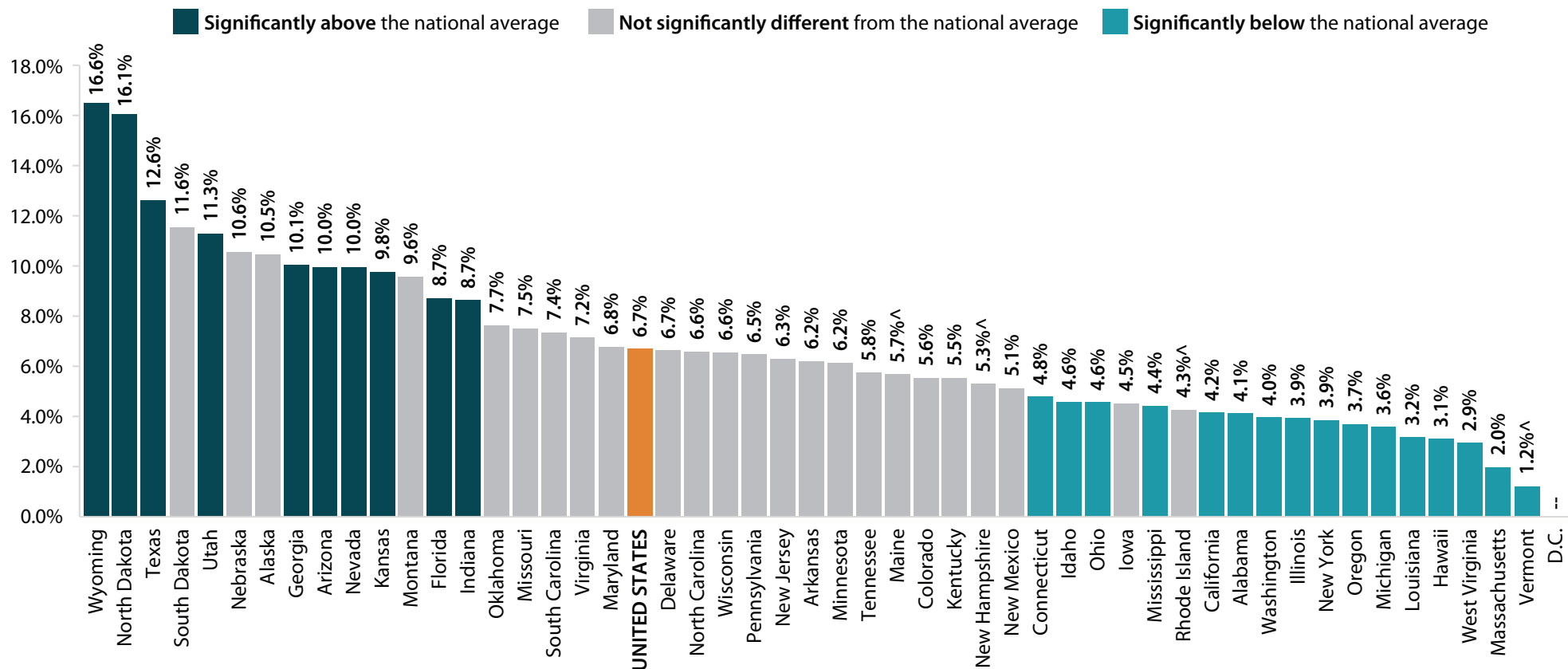
## Low-Income (0-138% FPG) Uninsured Children, 2017

National uninsured rate among low-income children		6.7%
States with the LOWEST uninsured rates		Rate
1. Vermont		1.2%^
2. Massachusetts		2.0%
3. West Virginia		2.9%
4. Hawaii		3.1%
5. Louisiana		3.2%
States with the HIGHEST uninsured rates		Rate
1. Wyoming		16.6%
2. North Dakota		16.1%
3. Texas		12.6%
4. South Dakota		11.6%
5. Utah		11.3%

**Note:** Estimates with relative standard errors greater than 30% are indicated by ^.  
**Source:** American Community Surveys as analyzed by SHADAC.

# Uninsured Rates among Low-Income Children in 2017 were Significantly above the National Average in 10 States, below in 16

## Low-Income Uninsured Children: State vs. National Rates, 2017



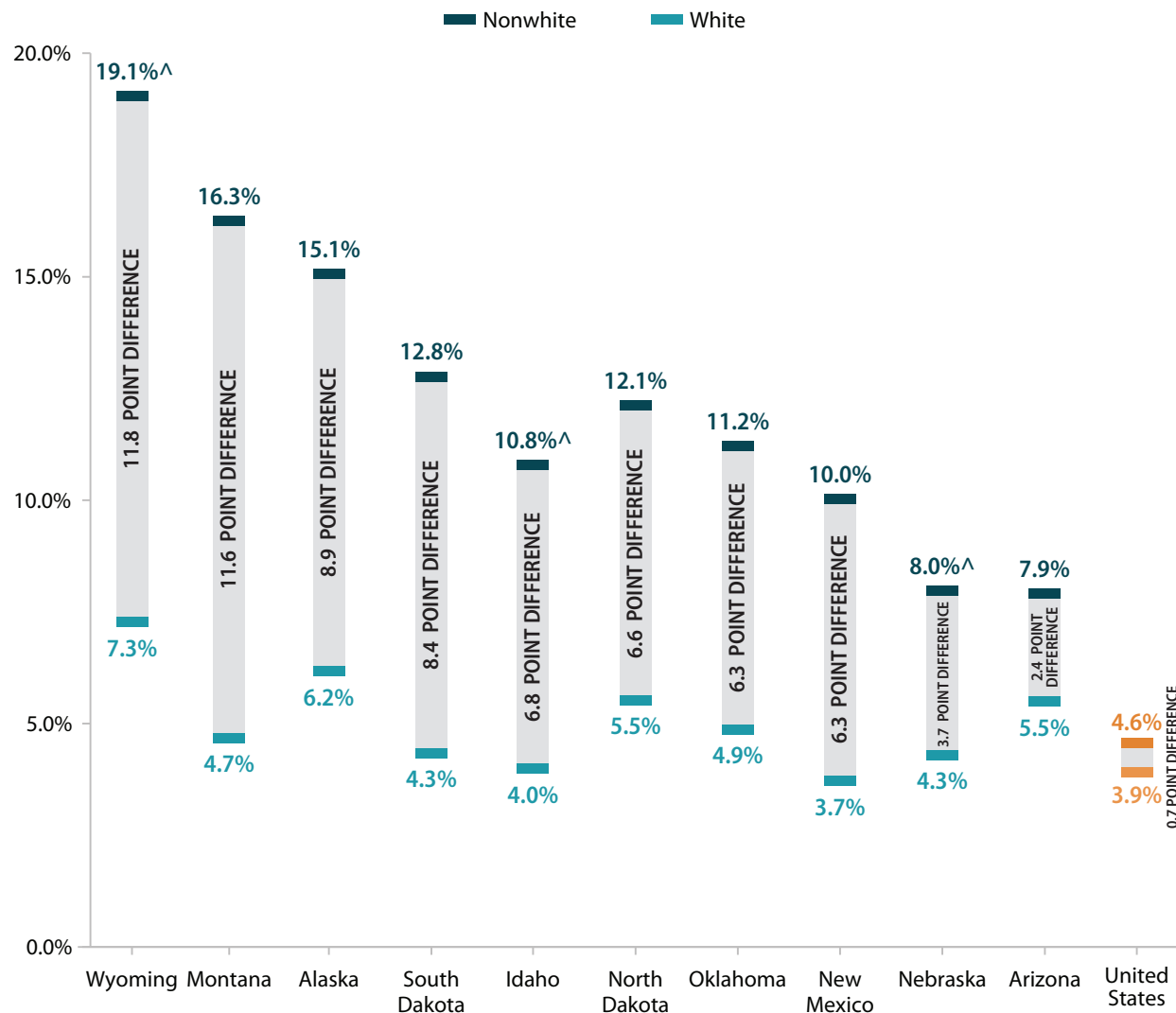
**Notes:** Estimates with relative standard errors greater than 30% are indicated by <sup>^</sup>. Estimates with no observed sample cases are indicated by --.  
**Source:** American Community Surveys as analyzed by SHADAC.

# STATE VARIATION IN CHILDREN'S UNINSURANCE BY RACE/ETHNICITY IN 2017

# Uninsurance by Race/Ethnicity: State-Level Disparities between Nonwhite and White Children in 2017

- In two states (Wyoming and Montana) the uninsured rate for Nonwhite children was more than 11 points higher than the rate for White children in 2017.
- Large disparities between uninsured rates for Nonwhite and White children occurred in all regions of the United States, with the exception of the Northeast.

### States with the Largest Differences in Uninsured Rates between Nonwhite and White Children, 2017

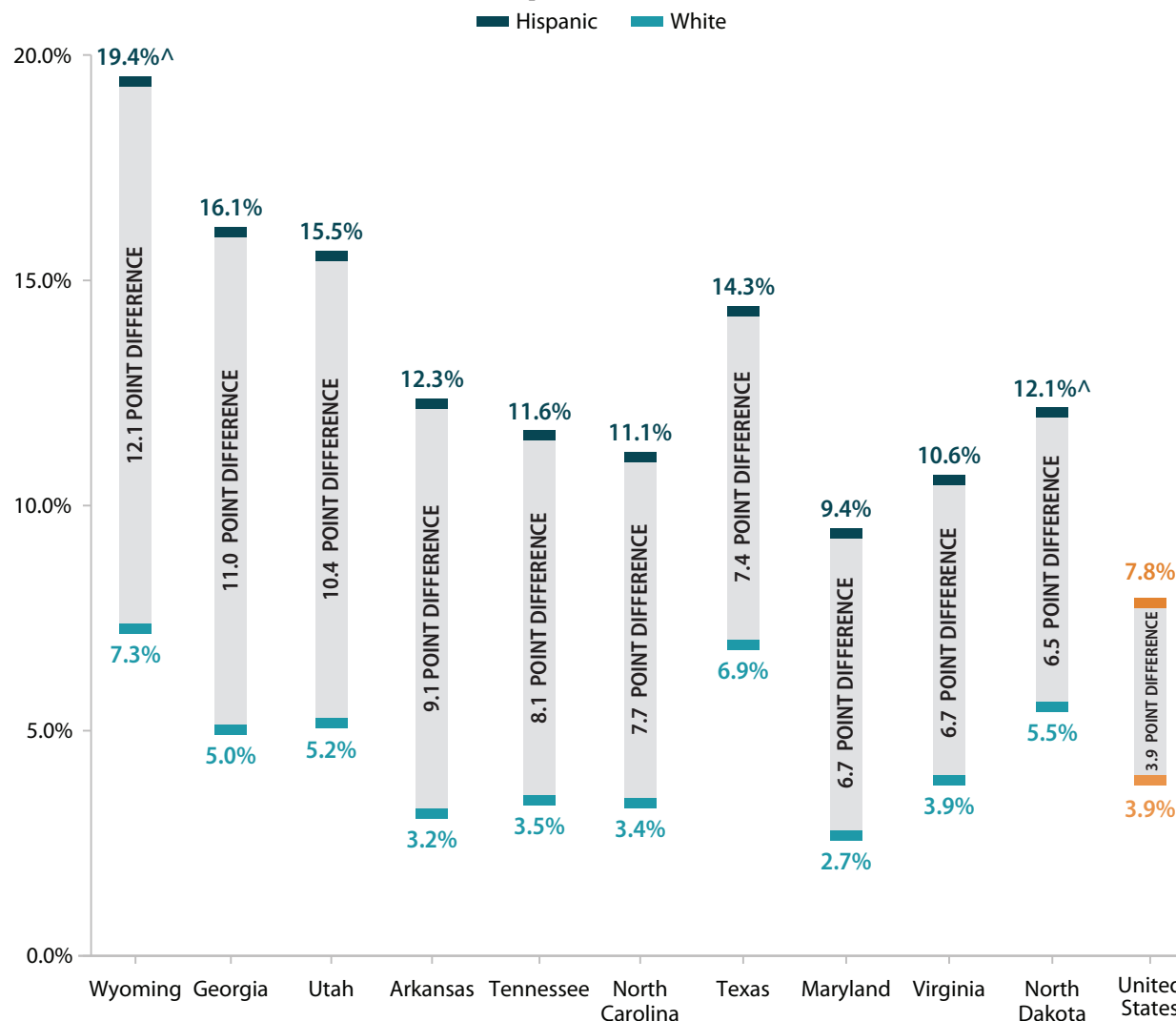


**Note:** Estimates with relative standard errors greater than 30% are indicated by <sup>^</sup>.  
**Source:** American Community Surveys as analyzed by SHADAC.

# Uninsurance by Race/Ethnicity: State-Level Disparities between Hispanic and White Children in 2017

- In three states (Wyoming, Georgia, and Utah) the uninsured rate for Hispanic children was more than 10 points higher than the rate for White children.
- In 10 states the uninsured rate for Hispanic children was 6.5 or more points higher than the rate for White children.

### States with the Largest Differences in Uninsured Rates between Hispanic and White Children, 2017



**Note:** Estimates with relative standard errors greater than 30% are indicated by <sup>^</sup>.  
**Source:** American Community Surveys as analyzed by SHADAC.

## State Uninsured Rates among Nonwhite Children Ranged from 1.7% to 19.1% in 2017

- In New Hampshire and the District of Columbia, the uninsurance rate for Nonwhite children was below 2% in 2017.
- More than 15% of Nonwhite children were uninsured in three states (Wyoming, Montana, and Alaska) in 2017.

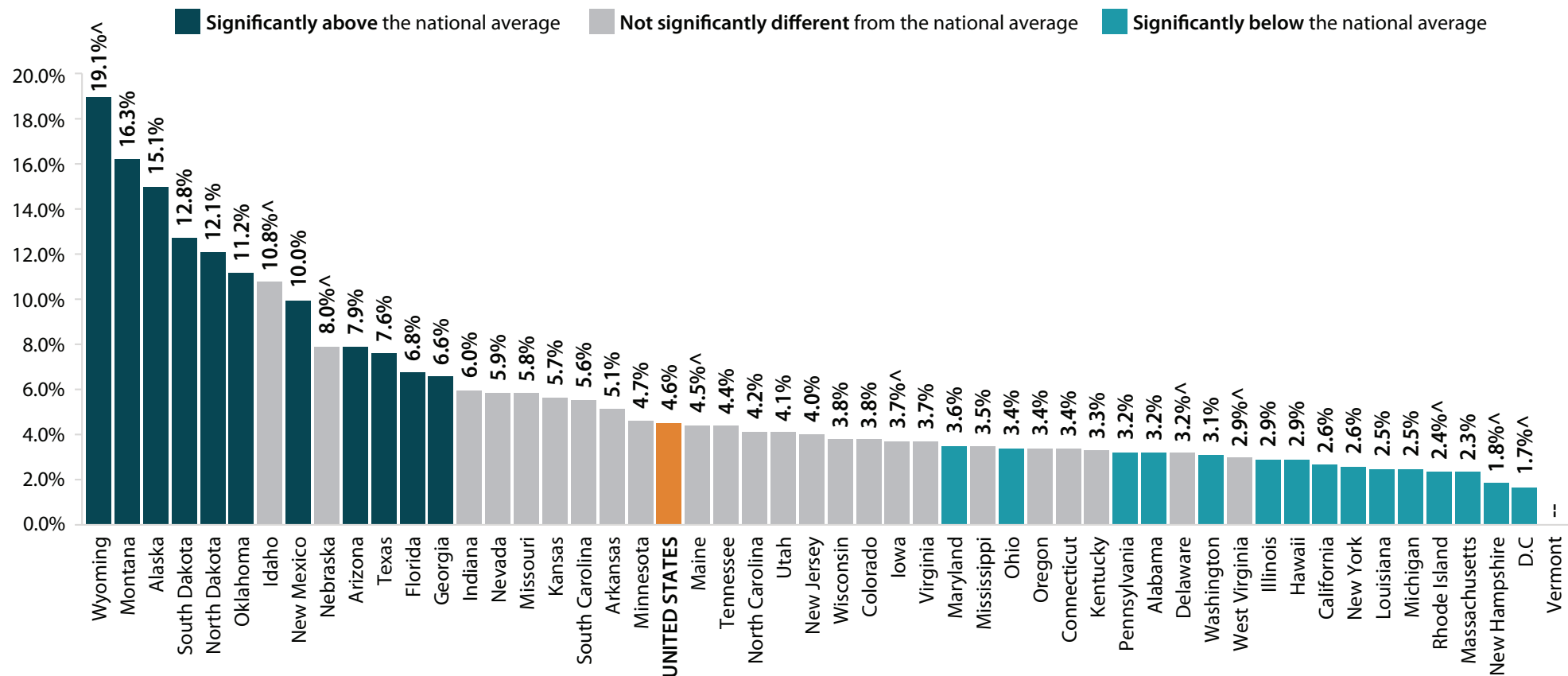
### Nonwhite Uninsured Children, 2017

National uninsured rate among Nonwhite children	
	4.6%
States with the LOWEST uninsured rates	
	Rate
1. District of Columbia	1.7% <sup>^</sup>
2. New Hampshire	1.8% <sup>^</sup>
3. Massachusetts	2.3%
4. Rhode Island	2.4% <sup>^</sup>
5. Michigan	2.5%
States with the HIGHEST uninsured rates	
	Rate
1. Wyoming	19.1% <sup>^</sup>
2. Montana	16.3%
3. Alaska	15.1%
4. South Dakota	12.8%
5. North Dakota	12.1%

**Note:** Estimates with relative standard errors greater than 30% are indicated by <sup>^</sup>.  
**Source:** American Community Surveys as analyzed by SHADAC.

# Uninsured Rates among Nonwhite Children in 2017 were Significantly above the National Average in 11 States, below in 15

## Nonwhite Uninsured Children: State vs. National Rates, 2017



**Notes:** Estimates with relative standard errors greater than 30% are indicated by <sup>^</sup>. Estimates with no observed sample cases are indicated by --.  
**Source:** American Community Surveys as analyzed by SHADAC.

# State Uninsured Rates among Hispanic Children Ranged from 0.8% to 19.4% in 2017

- In two states (Wyoming and Georgia) the uninsurance rate for Hispanic children was above 16% in 2017.
- The uninsurance rate for Hispanic children was below 2% in 2017 for two states (Hawaii and Massachusetts) and the District of Columbia.

## Hispanic Uninsured Children, 2017

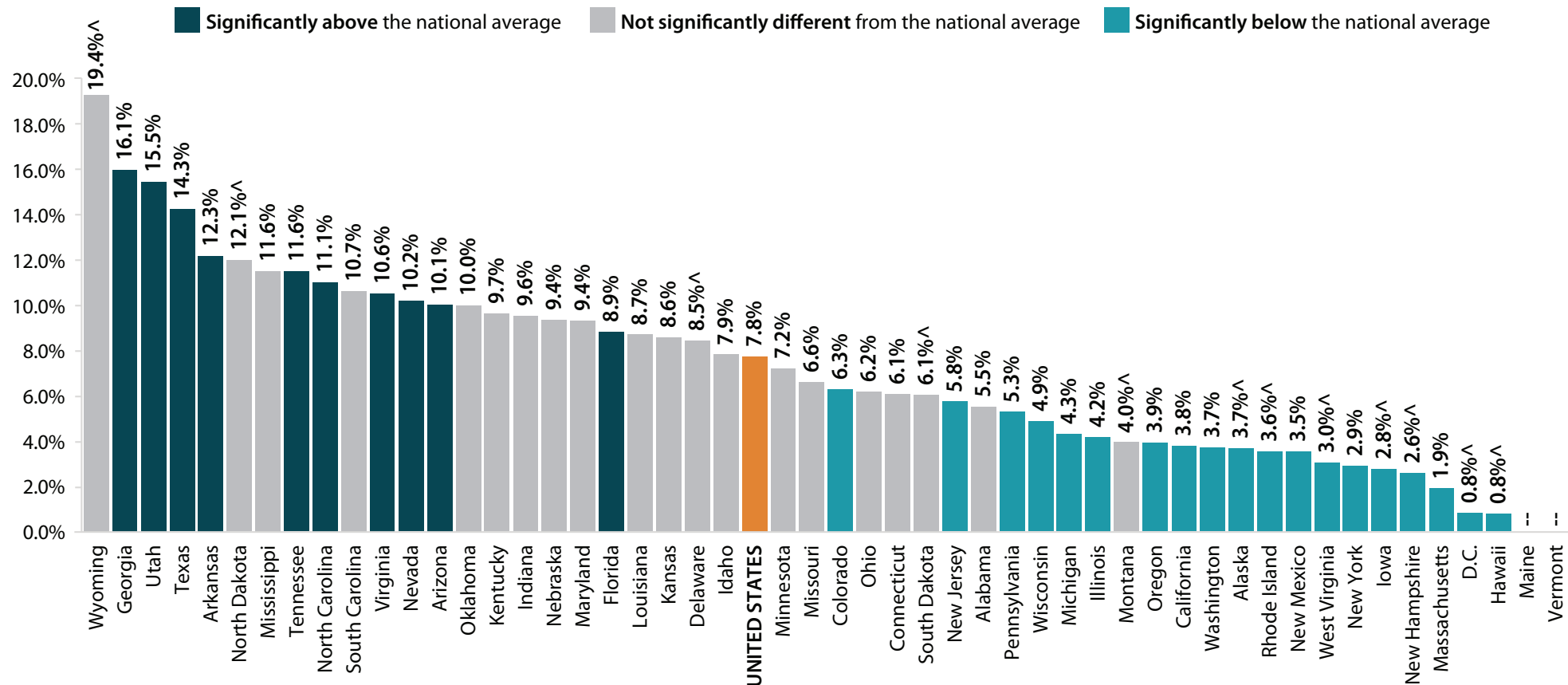
National uninsured rate among Hispanic children	
	7.8%
States with the LOWEST uninsured rates	
	Rate
1. Hawaii	0.8% <sup>^</sup>
2. District of Columbia	0.8% <sup>^</sup>
3. Massachusetts	1.9%
4. New Hampshire	2.6% <sup>^</sup>
5. Iowa	2.8% <sup>^</sup>
States with the HIGHEST uninsured rates	
	Rate
1. Wyoming	19.4% <sup>^</sup>
2. Georgia	16.1%
3. Utah	15.5%
4. Texas	14.3%
5. Arkansas	12.3%

**Note:** Estimates with relative standard errors greater than 30% are indicated by <sup>^</sup>.  
**Source:** American Community Surveys as analyzed by SHADAC.



# Uninsured Rates among Hispanic Children in 2017 were Significantly above the National Average in 10 States, below in 19

## Hispanic Uninsured Children: State vs. National Rates, 2017



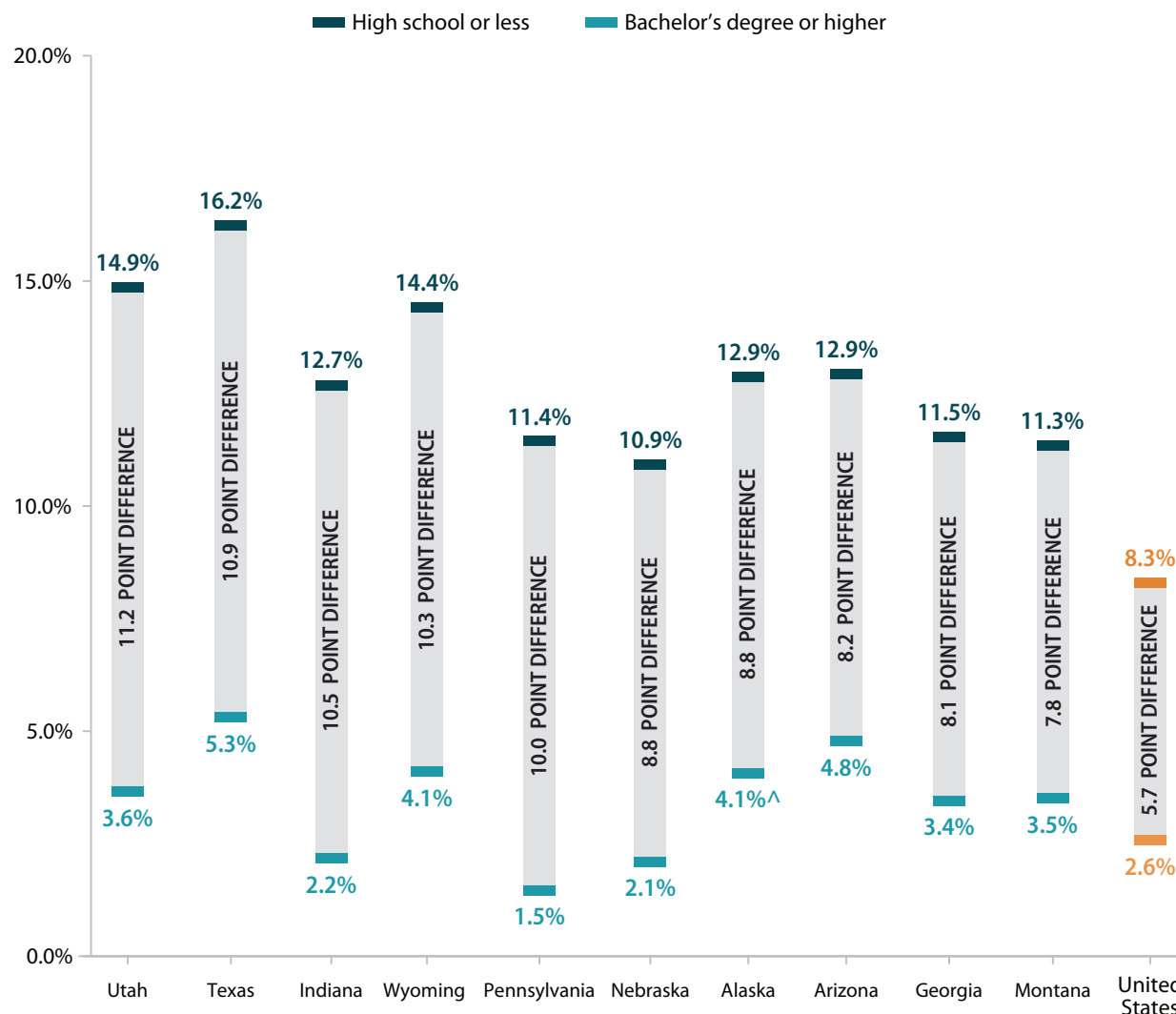
**Notes:** Estimates with relative standard errors greater than 30% are indicated by <sup>^</sup>. Estimates with no observed sample cases are indicated by --. Statistically significant findings are less likely when the sample size is small, which is often the case with smaller populations such as Hispanic children in Wyoming. **Source:** American Community Surveys as analyzed by SHADAC.

# STATE VARIATION IN CHILDREN'S UNINSURANCE BY PARENTAL EDUCATION IN 2017

# Uninsurance by Parental Education: State-Level Disparities between Children with Low and High Parental Education in 2017

- In five states (Utah, Texas, Indiana, Wyoming, and Pennsylvania) the uninsured rate for children in families with low parental education (high school or less) was 10 or more points above the rate for children in families with high parental education (Bachelor's degree or higher).

### States with the Largest Differences in Uninsured Rates between Children with Low and High Parental Education, 2017



**Notes:** Estimates with relative standard errors greater than 30% are indicated by <sup>^</sup>. Parental education refers to the highest educational attainment among adults age 25 and older in the family (health insurance unit; HIU).  
**Source:** American Community Surveys as analyzed by SHADAC.

# State Uninsured Rates among Children with Low Parental Education Ranged from 0.4% to 16.2% in 2017

- In Texas, more than 16% of children in families with low parental education (high school or less) were uninsured in 2017.
- The uninsurance rate for children in families with low parental education was below 3% in four states (Vermont, Massachusetts, New Hampshire, and West Virginia) and the District of Columbia, in 2017.

## Uninsured Children with Low Parental Education, 2017

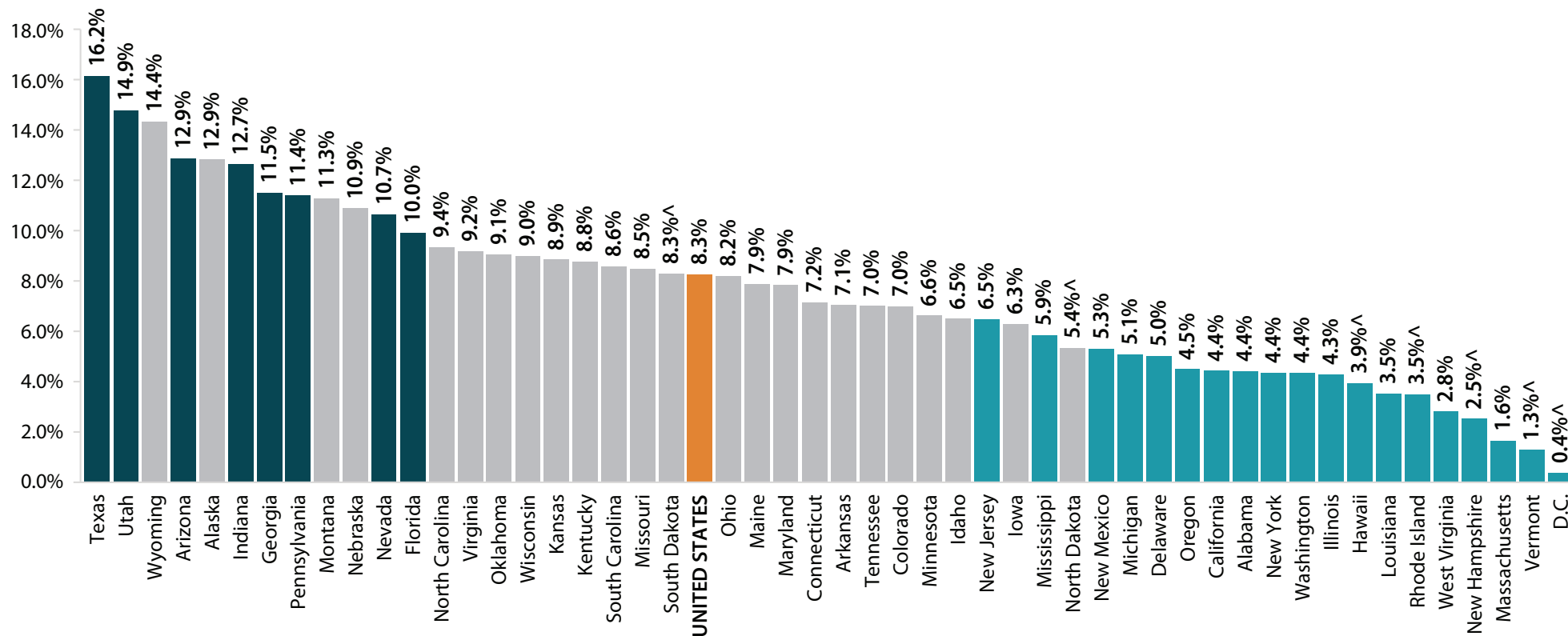
National uninsured rate among children with low parental education	
	8.3%
States with the LOWEST uninsured rates	
	Rate
1. District of Columbia	0.4% <sup>^</sup>
2. Vermont	1.3% <sup>^</sup>
3. Massachusetts	1.6%
4. New Hampshire	2.5% <sup>^</sup>
5. West Virginia	2.8%
States with the HIGHEST uninsured rates	
	Rate
1. Texas	16.2%
2. Utah	14.9%
3. Wyoming	14.4%
4. Arizona	12.9%
5. Alaska	12.9%

**Notes:** Estimates with relative standard errors greater than 30% are indicated by <sup>^</sup>. Parental education refers to the highest educational attainment among adults age 25 and older in the family (health insurance unit; HIU).  
**Source:** American Community Surveys as analyzed by SHADAC.

# Uninsured Rates among Children with Low Parental Education in 2017 were Significantly above the National Average in 8 States, below in 19

## Uninsured Children in Families with Low Parental Education: State vs. National Rates, 2017

■ Significantly above the national average   
 ■ Not significantly different from the national average   
 ■ Significantly below the national average



**Note:** Estimates with relative standard errors greater than 30% are indicated by <sup>^</sup>.  
**Source:** American Community Surveys as analyzed by SHADAC.

## Citation and Acknowledgment

### Suggested Citation

Lukanen, E., Schwehr, N., and Fried, B. (2019). "Children's Health Insurance Coverage Nationwide and in the States, 2016 to 2017." Minneapolis, MN: State Health Access Data Assistance Center (SHADAC).

### Other Contributors

Carrie Au-Yeung provided review and editing and Lindsey Lanigan provided design and layout.

### About SHADAC

SHADAC is a multidisciplinary health policy research center with a focus on state policy. SHADAC is affiliated with the University of Minnesota, School of Public Health. For more information, please visit us at [www.shadac.org](http://www.shadac.org), or contact us at [shadac@umn.edu](mailto:shadac@umn.edu).

### Support from the Robert Wood Johnson Foundation

Funding for this analysis was provided by the Robert Wood Johnson Foundation (RWJF). SHADAC is grateful for RWJF's support in sustaining our core efforts toward increasing the availability and use of relevant state and national data to inform state health policy. Learn more about RWJF at [www.rwjf.org](http://www.rwjf.org).



Robert Wood Johnson Foundation



# **APPENDIX: DATA AND METHODS & 50-STATE COMPARISON TABLES**



## The American Community Survey

In this report, we analyze data from the American Community Survey (ACS). The ACS is an annual survey conducted by the U.S. Census Bureau that includes questions on a wide range of topics, including demographics, income, employment, and health insurance (beginning in 2008). The ACS is a mixed-mode survey that includes responses from mail, telephone, and in-person interviews. Nationally, about 4.5 million people respond to the ACS each year. The ACS collects data in every county in the nation, and its large sample size allows for more precise state-level estimates than other 50-state surveys. The sample is restricted to the non-institutional population. The data analysis for this report was performed with the ACS public use microdata sample. Standard errors were produced using the Taylor series approximation (STATA, Version 15).<sup>i</sup>

## Children

Children are defined in this report as individuals age 0 to 18.

## Insurance Coverage

The ACS collects data on all sources of health insurance coverage that a person has at the time of the survey. For this report, SHADAC analyzed the ACS data on health insurance by primary source of insurance coverage. If multiple sources of coverage were reported for a child, employer-sponsored insurance (ESI) was considered primary over public sources of insurance such as Medicaid and CHIP. Primary coverage for children was assigned based on a hierarchy: 1) ESI or military; 2) Medicaid or CHIP; 3) Individual; 4) Medicare; 5) uninsured. The Medicaid category used in this report comprises public coverage, including the small number of children with Medicare coverage (0.3% nationally in 2016 and 2017). Private health insurance includes ESI/military and individual coverage. Additional estimates of children's health insurance coverage for all coverage type breakdowns—private, public, insured, uninsured, ESI/military, individual, Medicaid/CHIP, Medicare—are available from SHADAC's State Health Compare (<http://statehealthcompare.shadac.org>).

## Income

To measure family poverty, SHADAC included the total income for all individuals in the health insurance unit (HIU). The health insurance unit is a narrower definition of family that more accurately reflects whose income is included when assessing public program eligibility for an individual.<sup>ii</sup> We divided total income by the Federal poverty guidelines (FPG) produced by the U.S. Department of Health and Human Services to calculate the income as a percentage of FPG. In 2017, the FPG for a family of four was \$24,600 (with the exception of Alaska and Hawaii).

## Race/Ethnicity

For race/ethnicity, "White" is defined in this report as white-alone, non-Hispanic. "Nonwhite" is all other races or two or more races, excluding Hispanic. "Hispanic" is defined as any-Hispanic.

## Education

In this report, parental education refers to the highest educational attainment among adults age 25 and older in the family (health insurance unit).

## Reliability of Estimates

Estimates with relative standard errors (standard error/estimate) greater than 30 percent may be less reliable and are indicated in this report by  $\wedge$ . Estimates with no observed sample cases are suppressed and indicated by --.

<sup>i</sup> StataCorp. 2017. Stata Statistical Software: Release 15. College Station, TX: StataCorp LLC

<sup>ii</sup> SHADAC and Robert Wood Johnson Foundation. March 2012. Defining Family for Studies of Health Insurance Coverage. Available at: [http://www.shadac.org/files/shadac/publications/SHADAC\\_Brief27.pdf](http://www.shadac.org/files/shadac/publications/SHADAC_Brief27.pdf)

## Number of Uninsured Children, 2016 to 2017

State	Uninsured		
	2016 Count	2017 Count	Percent Change
Alabama	31,032	36,221	16.7%
Alaska	21,339	19,036	-10.8%
Arizona	133,948	136,973	2.3%
Arkansas	30,797	35,846	16.4%
California	308,371	303,373	-1.6%
Colorado	59,050	56,664	-4.0%
Connecticut	20,617	26,212	27.1%
Delaware	8,283	7,510	-9.3%
D.C.	4,298 <sup>^</sup>	1,853 <sup>^</sup>	-56.9%
Florida	287,528	320,913	11.6% *
Georgia	178,655	194,464	8.8%
Hawaii	7,536	7,991	6.0%
Idaho	24,888	24,099	-3.2%
Illinois	83,499	93,313	11.8%
Indiana	94,691	104,450	10.3%
Iowa	16,502	20,593	24.8%
Kansas	36,752	40,815	11.1%
Kentucky	34,620	43,734	26.3%
Louisiana	42,405	35,756	-15.7%
Maine	13,615	11,418	-16.1%
Maryland	47,540	57,335	20.6%
Massachusetts	14,781	21,726	47.0% *
Michigan	71,931	68,742	-4.4%
Minnesota	42,091	46,510	10.5%
Mississippi	36,371	38,156	4.9%
Missouri	74,813	71,114	-4.9%
Montana	11,276	15,363	36.2%
Nebraska	27,758	28,271	1.8%
Nevada	45,071	53,948	19.7%
New Hampshire	8,935	7,098	-20.6%
New Jersey	70,062	76,062	8.6%
New Mexico	28,897	23,920	-17.2%
New York	114,529	122,256	6.7%
North Carolina	112,010	118,919	6.2%
North Dakota	18,534	12,727	-31.3%
Ohio	98,048	114,359	16.6%
Oklahoma	76,693	77,726	1.3%
Oregon	29,950	30,004	0.2%
Pennsylvania	133,040	127,908	-3.9%
Rhode Island	4,611	4,912	6.5%
South Carolina	48,399	62,770	29.7% *
South Dakota	10,350	13,786	33.2%
Tennessee	58,650	70,974	21.0%
Texas	750,975	833,178	10.9% *
Utah	54,541	67,134	23.1%
Vermont	1,337 <sup>^</sup>	1,737 <sup>^</sup>	29.9%
Virginia	102,221	93,665	-8.4%
Washington	43,225	47,066	8.9%
West Virginia	7,174	10,603	47.8%
Wisconsin	46,233	53,391	15.5%
Wyoming	11,443	14,624	27.8%
<b>United States</b>	<b>3,639,915</b>	<b>3,907,218</b>	<b>7.3% *</b>

**Notes:** Significant difference between periods is indicated by \* (95% confidence level). Tables may not add up precisely due to rounding. Estimates with relative standard errors greater than 30% are indicated by <sup>^</sup>. Please see the methods section for variable definitions. ESI= Employer-sponsored insurance.  
**Source:** American Community Surveys as analyzed by SHADAC.

# Appendix: Table 2

## Children's Health Insurance Coverage Rates, 2016 to 2017

State	ESI Coverage			Individual Coverage			Medicaid			Uninsured		
	2016	2017	Point Change	2016	2017	Point Change	2016	2017	Point Change	2016	2017	Point Change
Alabama	49.6%	49.7%	0.1	5.3%	5.0%	-0.3	42.4%	42.1%	-0.3	2.7%	3.1%	0.5
Alaska	54.7%	55.2%	0.5	3.2%	2.4% <sup>^</sup>	-0.9	31.3%	32.8%	1.5	10.8%	9.7%	-1.1
Arizona	48.8%	50.9%	2.1 *	6.2%	5.5%	-0.7	37.2%	35.6%	-1.6	7.8%	7.9%	0.2
Arkansas	42.6%	42.4%	-0.3	4.9%	4.3%	-0.6	48.3%	48.5%	0.2	4.1%	4.8%	0.7
California	48.9%	50.3%	1.4 *	5.8%	6.0%	0.3	42.1%	40.5%	-1.6 *	3.2%	3.2%	0.0
Colorado	55.7%	56.3%	0.7	7.5%	6.5%	-1.0	32.3%	32.9%	0.5	4.4%	4.3%	-0.2
Connecticut	61.3%	61.8%	0.5	5.3%	4.8%	-0.5	30.9%	30.0%	-0.8	2.6%	3.3%	0.7
Delaware	60.3%	61.9%	1.5	5.4%	5.4%	0.0	30.4%	29.3%	-1.1	3.8%	3.5%	-0.4
D.C.	47.6%	45.0%	-2.6	5.4%	7.8%	2.4	43.7%	45.8%	2.1	3.3% <sup>^</sup>	1.4% <sup>^</sup>	-1.9
Florida	44.8%	44.0%	-0.8	8.2%	7.9%	-0.3	40.4%	40.9%	0.5	6.6%	7.2%	0.7 *
Georgia	50.0%	51.9%	1.9 *	5.8%	4.6%	-1.2 *	37.4%	36.2%	-1.2	6.7%	7.3%	0.6
Hawaii	65.9%	65.7%	-0.2	4.6%	3.9%	-0.7	27.2%	27.9%	0.7	2.3%	2.5%	0.2
Idaho	53.0%	53.8%	0.8	9.1%	8.5%	-0.6	32.5%	32.6%	0.0	5.4%	5.2%	-0.3
Illinois	56.6%	57.4%	0.8	5.2%	4.5%	-0.7 *	35.5%	35.0%	-0.5	2.7%	3.0%	0.3
Indiana	57.9%	57.4%	-0.5	4.7%	4.5%	-0.2	31.8%	31.8%	0.1	5.7%	6.3%	0.6
Iowa	62.8%	64.2%	1.5	5.1%	6.0%	0.9	29.9%	27.1%	-2.8	2.2%	2.7%	0.5
Kansas	60.0%	60.6%	0.6	7.9%	6.9%	-1.1	27.2%	27.2%	0.0	4.9%	5.4%	0.5
Kentucky	51.1%	51.1%	0.0	4.9%	4.0%	-0.9	40.7%	40.8%	0.1	3.2%	4.1%	0.8
Louisiana	43.0%	45.0%	2.0	5.7%	4.0%	-1.8 *	47.7%	48.0%	0.3	3.6%	3.0%	-0.5
Maine	59.8%	60.5%	0.6	5.5%	5.6%	0.1	29.7%	29.7%	0.0	4.9%	4.2%	-0.7
Maryland	61.6%	62.4%	0.8	5.2%	4.2%	-1.0 *	29.8%	29.4%	-0.5	3.3%	4.1%	0.7
Massachusetts	63.5%	63.9%	0.4	4.9%	4.7%	-0.2	30.6%	29.9%	-0.7	1.0%	1.5%	0.5 *
Michigan	57.8%	58.6%	0.8	4.7%	4.1%	-0.6	34.4%	34.4%	0.0	3.1%	3.0%	-0.1
Minnesota	64.7%	65.6%	0.9	6.4%	5.4%	-0.9	25.9%	25.6%	-0.3	3.1%	3.4%	0.3
Mississippi	42.3%	42.6%	0.3	5.1%	5.4%	0.3	47.9%	47.0%	-0.9	4.7%	5.0%	0.3
Missouri	57.9%	57.8%	-0.1	7.3%	6.6%	-0.7	29.8%	30.8%	1.0	5.1%	4.8%	-0.2
Montana	50.3%	47.4%	-2.9	8.0%	9.7%	1.7	37.1%	36.6%	-0.6	4.7%	6.4%	1.8
Nebraska	60.3%	63.3%	3.0	6.9%	6.2%	-0.7	27.2%	24.8%	-2.4	5.6%	5.7%	0.0
Nevada	54.0%	55.6%	1.5	6.1%	4.7%	-1.4 *	33.5%	32.2%	-1.3	6.3%	7.5%	1.2
New Hampshire	67.6%	64.1%	-3.5	3.8%	4.8%	1.0	25.4%	28.4%	3.1	3.2%	2.6%	-0.6
New Jersey	61.8%	62.2%	0.4	4.9%	5.0%	0.1	30.0%	29.1%	-0.9	3.3%	3.6%	0.3
New Mexico	38.4%	39.4%	1.0	2.9%	3.8%	0.8	53.0%	52.3%	-0.7	5.6%	4.6%	-1.0
New York	52.2%	52.6%	0.4	6.6%	6.8%	0.1	38.6%	37.8%	-0.8	2.6%	2.8%	0.2
North Carolina	49.2%	50.4%	1.1	6.5%	5.9%	-0.6	39.7%	38.9%	-0.8	4.6%	4.8%	0.3
North Dakota	63.1%	67.5%	4.4	9.7%	8.0%	-1.8	17.1%	17.6%	0.5	10.1%	7.0%	-3.1
Ohio	59.1%	58.7%	-0.4	3.9%	4.2%	0.3	33.5%	33.0%	-0.5	3.6%	4.1%	0.6
Oklahoma	46.1%	47.2%	1.1	5.7%	5.3%	-0.4	40.7%	39.9%	-0.8	7.5%	7.6%	0.1
Oregon	53.7%	54.0%	0.3	6.7%	6.5%	-0.1	36.4%	36.3%	-0.1	3.3%	3.2%	0.0
Pennsylvania	57.2%	59.4%	2.1 *	5.5%	5.2%	-0.3	32.6%	30.9%	-1.7	4.7%	4.5%	-0.2
Rhode Island	61.7%	58.2%	-3.5	5.7%	5.1%	-0.6	30.5%	34.5%	4.0	2.1%	2.2%	0.1
South Carolina	50.1%	50.8%	0.7	5.0%	4.6%	-0.4	40.7%	39.3%	-1.4	4.1%	5.3%	1.2 *
South Dakota	59.8%	60.3%	0.5	7.8%	7.7%	-0.1	27.8%	25.8%	-2.0	4.6%	6.2%	1.6
Tennessee	51.9%	52.7%	0.8	5.8%	4.8%	-0.9 *	38.7%	38.0%	-0.6	3.7%	4.4%	0.8
Texas	46.5%	48.0%	1.4 *	5.5%	4.9%	-0.6 *	38.3%	36.5%	-1.8 *	9.8%	10.7%	0.9 *
Utah	67.9%	67.7%	-0.2	9.7%	8.5%	-1.2	16.8%	16.9%	0.1	5.6%	6.9%	1.3
Vermont	52.5%	48.8%	-3.6	3.3%	3.1%	-0.2	43.2%	46.7%	3.5	1.0% <sup>^</sup>	1.4% <sup>^</sup>	0.3
Virginia	64.6%	64.5%	-0.1	6.3%	6.3%	0.1	24.0%	24.5%	0.5	5.1%	4.7%	-0.4
Washington	56.8%	57.9%	1.1	5.4%	5.0%	-0.5	35.2%	34.4%	-0.8	2.5%	2.7%	0.2
West Virginia	49.6%	51.0%	1.4	3.1%	2.9%	-0.2	45.6%	43.5%	-2.1	1.8%	2.7%	0.9
Wisconsin	65.7%	66.2%	0.5	4.0%	3.9%	-0.1	26.9%	26.0%	-0.9	3.4%	3.9%	0.5
Wyoming	62.8%	60.7%	-2.1	8.3%	5.9%	-2.4	21.2%	23.3%	2.1	7.7%	10.0%	2.4
<b>United States</b>	<b>53.4%</b>	<b>54.1%</b>	<b>0.7 *</b>	<b>5.8%</b>	<b>5.5%</b>	<b>-0.4 *</b>	<b>36.1%</b>	<b>35.4%</b>	<b>-0.7 *</b>	<b>4.7%</b>	<b>5.0%</b>	<b>0.3 *</b>

Notes: Significant difference between periods is indicated by \* (95% confidence level). Tables may not add up precisely due to rounding. Estimates with relative standard errors greater than 30% are indicated by ^. Please see the methods section for variable definitions. ESI=Employer-sponsored insurance. Source: American Community Surveys as analyzed by SHADAC.

## Children with Private Insurance by Income, 2016 to 2017

State	0-138% FPG			139-400% FPG			401%+ FPG		
	2016	2017	Point Change	2016	2017	Point Change	2016	2017	Point Change
Alabama	16.5%	17.0%	0.4	68.1%	69.2%	1.1	93.6%	92.0%	-1.6
Alaska	19.1%	20.6%	1.4	65.5%	68.7%	3.3	94.0%	90.4%	-3.6
Arizona	17.5%	19.1%	1.6	71.3%	66.9%	-4.4 *	93.1%	93.8%	0.7
Arkansas	15.1%	10.1%	-5.0 *	60.9%	56.2%	-4.7	88.9%	92.3%	3.4
California	17.4%	18.3%	0.9	59.3%	58.8%	-0.4	94.1%	93.2%	-0.9 *
Colorado	20.0%	19.7%	-0.3	63.4%	60.2%	-3.2	94.0%	93.0%	-1.0
Connecticut	15.4%	20.2%	4.9 *	61.0%	61.8%	0.8	95.7%	94.2%	-1.5
Delaware	21.4%	29.7%	8.3	69.5%	68.0%	-1.5	94.3%	96.4%	2.1
D.C.	14.7%	14.3%	-0.4	49.1%	47.6%	-1.5	94.1%	93.8%	-0.3
Florida	18.9%	16.5%	-2.3 *	62.1%	59.1%	-3.0 *	91.2%	90.3%	-0.9
Georgia	19.3%	20.4%	1.0	67.0%	64.1%	-3.0 *	93.6%	92.8%	-0.8
Hawaii	37.5%	45.1%	7.6	79.0%	73.5%	-5.5	95.1%	95.1%	0.0
Idaho	24.3%	26.0%	1.6	73.7%	67.6%	-6.1 *	91.3%	96.3%	5.0 *
Illinois	17.7%	19.5%	1.7	67.8%	65.9%	-1.9	95.6%	95.6%	0.0
Indiana	21.8%	21.0%	-0.8	74.0%	70.4%	-3.6 *	95.9%	94.3%	-1.6
Iowa	23.0%	29.6%	6.7	72.4%	71.6%	-0.8	95.0%	95.4%	0.4
Kansas	25.9%	24.6%	-1.3	75.5%	74.4%	-1.1	95.4%	95.9%	0.6
Kentucky	16.3%	15.7%	-0.6	71.5%	66.8%	-4.7 *	95.5%	93.8%	-1.6
Louisiana	14.0%	16.1%	2.0	63.3%	60.6%	-2.8	89.3%	90.0%	0.6
Maine	22.6%	17.4%	-5.1	73.9%	72.1%	-1.8	94.8%	95.5%	0.6
Maryland	22.6%	22.9%	0.3	63.5%	61.4%	-2.1	94.2%	94.8%	0.6
Massachusetts	18.2%	19.9%	1.7	62.6%	63.5%	0.9	95.2%	94.8%	-0.4
Michigan	19.6%	21.6%	1.9	74.8%	72.4%	-2.5	96.3%	96.0%	-0.3
Minnesota	25.7%	25.8%	0.1	73.0%	71.2%	-1.8	95.3%	95.4%	0.1
Mississippi	14.3%	15.5%	1.2	62.2%	61.8%	-0.4	92.3%	92.0%	-0.3
Missouri	25.0%	24.9%	-0.1	76.6%	74.2%	-2.4	95.2%	95.6%	0.4
Montana	21.4%	19.1%	-2.4	65.9%	56.0%	-9.8 *	93.9%	90.6%	-3.3
Nebraska	23.6%	23.4%	-0.1	74.5%	79.5%	5.0	96.8%	94.9%	-1.9
Nevada	24.1%	24.8%	0.7	73.8%	71.2%	-2.6	94.9%	91.8%	-3.0 *
New Hampshire	20.4%	14.9%	-5.5	64.5%	64.7%	0.2	93.4%	95.5%	2.2
New Jersey	19.9%	20.3%	0.4	64.5%	63.6%	-1.0	96.2%	94.9%	-1.2 *
New Mexico	12.6%	12.2%	-0.4	54.8%	54.3%	-0.5	88.8%	89.3%	0.5
New York	18.4%	18.7%	0.4	64.7%	64.0%	-0.8	93.5%	92.9%	-0.7
North Carolina	17.3%	16.4%	-1.0	66.4%	65.3%	-1.0	93.9%	94.0%	0.0
North Dakota	29.3%	33.4%	4.1	76.0%	76.6%	0.6	94.8%	95.2%	0.4
Ohio	20.2%	19.2%	-1.0	74.0%	73.4%	-0.6	95.8%	95.4%	-0.4
Oklahoma	17.2%	20.4%	3.2	63.6%	60.6%	-3.0	89.1%	89.8%	0.7
Oregon	18.6%	20.0%	1.4	66.7%	63.7%	-3.0	95.8%	93.1%	-2.7 *
Pennsylvania	21.3%	20.6%	-0.7	69.2%	70.1%	0.9	94.4%	94.6%	0.2
Rhode Island	26.9%	14.0%	-12.9 *	69.6%	65.7%	-3.9	97.4%	96.6%	-0.9
South Carolina	18.5%	18.2%	-0.3	66.2%	67.4%	1.2	94.1%	94.3%	0.2
South Dakota	25.7%	18.3%	-7.4	79.0%	76.8%	-2.2	96.5%	96.7%	0.2
Tennessee	21.6%	19.7%	-1.9	70.7%	69.6%	-1.1	94.6%	92.6%	-2.0
Texas	16.5%	16.1%	-0.4	61.0%	59.5%	-1.5	92.1%	91.9%	-0.2
Utah	41.5%	35.9%	-5.6	85.1%	84.1%	-1.0	96.7%	94.6%	-2.0
Vermont	9.9%	10.2%	0.4	53.0%	46.7%	-6.4	90.5%	91.7%	1.2
Virginia	25.6%	26.1%	0.5	76.0%	73.4%	-2.6	96.2%	96.2%	0.0
Washington	21.2%	20.9%	-0.3	61.4%	63.2%	1.8	94.8%	93.6%	-1.2
West Virginia	18.0%	14.6%	-3.4	65.5%	67.8%	2.3	93.9%	95.9%	2.0
Wisconsin	24.3%	23.3%	-1.0	77.6%	75.7%	-1.9	95.9%	96.5%	0.7
Wyoming	31.5%	22.4%	-9.1	77.5%	74.4%	-3.1	91.8%	89.9%	-1.9
United States	19.2%	19.3%	0.1	66.9%	65.4%	-1.5 *	94.2%	93.7%	-0.5 *

**Notes:** Significant difference between periods is indicated by \* (95% confidence level). Tables may not add up precisely due to rounding. Estimates with relative standard errors greater than 30% are indicated by ^. Please see the methods section for variable definitions. FPG=Federal poverty guidelines.

**Source:** American Community Surveys as analyzed by SHADAC.

# Appendix: Table 4

## Children with Medicaid by Income, 2016 to 2017

State	0-138% FPG			139-400% FPG			401%+ FPG		
	2016	2017	Point Change	2016	2017	Point Change	2016	2017	Point Change
Alabama	80.0%	78.9%	-1.1	29.1%	28.1%	-1.0	5.5%	6.1%	0.6
Alaska	67.0%	68.9%	1.9	22.0%	19.9%	-2.1	2.6% <sup>^</sup>	5.1% <sup>^</sup>	2.6
Arizona	72.1%	70.9%	-1.2	20.9%	24.3%	3.4 *	4.0%	3.0%	-1.0
Arkansas	80.6%	83.7%	3.1	34.4%	39.0%	4.6	8.8%	5.6%	-3.2
California	78.2%	77.5%	-0.6	37.2%	37.6%	0.4	4.6%	5.2%	0.6 *
Colorado	73.6%	74.7%	1.1	31.0%	34.1%	3.1	4.5%	5.1%	0.6
Connecticut	82.1%	75.0%	-7.2 *	35.2%	34.8%	-0.3	2.7%	3.6%	0.9
Delaware	73.2%	63.6%	-9.5	26.2%	28.2%	2.0	4.2% <sup>^</sup>	3.0%	-1.2
D.C.	79.1%	85.7%	6.7	47.8%	47.6%	-0.2	5.3% <sup>^</sup>	5.4%	0.0
Florida	73.3%	74.7%	1.5	30.6%	32.9%	2.3 *	5.5%	5.9%	0.4
Georgia	72.1%	69.6%	-2.5	25.4%	28.2%	2.9 *	4.0%	4.4%	0.4
Hawaii	59.1%	51.8%	-7.3	19.6%	23.4%	3.8	2.3% <sup>^</sup>	4.3% <sup>^</sup>	2.0
Idaho	69.6%	69.5%	-0.1	20.9%	25.9%	4.9	4.4% <sup>^</sup>	1.4% <sup>^</sup>	-3.0 *
Illinois	78.7%	76.6%	-2.1	29.3%	30.2%	0.9	2.9%	3.2%	0.3
Indiana	71.1%	70.4%	-0.7	19.1%	22.6%	3.5 *	2.7%	3.4%	0.7
Iowa	73.3%	65.8%	-7.4 *	25.6%	25.7%	0.1	3.7%	3.5%	-0.2
Kansas	65.9%	65.6%	-0.3	20.0%	20.4%	0.4	2.4% <sup>^</sup>	2.5% <sup>^</sup>	0.1
Kentucky	79.2%	78.8%	-0.4	25.2%	28.8%	3.6 *	3.5%	4.9%	1.3
Louisiana	81.9%	80.8%	-1.2	32.8%	35.8%	3.0	8.5%	8.2%	-0.3
Maine	72.5%	76.9%	4.4	19.4%	22.7%	3.3	2.6% <sup>^</sup>	2.6%	0.1
Maryland	72.6%	70.3%	-2.3	32.2%	33.7%	1.5	4.2%	3.5%	-0.7
Massachusetts	80.6%	78.1%	-2.5	35.9%	34.6%	-1.3	4.2%	4.4%	0.3
Michigan	76.0%	74.9%	-1.2	21.7%	23.9%	2.2	2.7%	3.0%	0.4
Minnesota	69.3%	68.1%	-1.2	23.6%	24.9%	1.3	3.1%	3.4%	0.3
Mississippi	80.6%	80.1%	-0.5	32.6%	31.3%	-1.3	5.5%	6.5%	1.0
Missouri	66.9%	67.5%	0.6	18.8%	20.8%	2.0	2.4%	3.1%	0.7
Montana	71.2%	71.3%	0.1	30.2%	36.6%	6.4	3.1% <sup>^</sup>	6.7%	3.7 *
Nebraska	65.7%	66.0%	0.2	19.8%	15.3%	-4.5	2.1% <sup>^</sup>	3.1%	0.9
Nevada	67.0%	65.2%	-1.7	19.6%	21.3%	1.6	3.4%	4.3%	0.9
New Hampshire	72.8%	79.8%	7.0	31.6%	32.3%	0.6	5.2%	3.7%	-1.5
New Jersey	74.5%	73.4%	-1.1	31.0%	32.0%	0.9	2.6%	3.5%	0.8
New Mexico	81.7%	82.6%	1.0	38.2%	40.7%	2.5	8.9%	8.3%	-0.6
New York	78.4%	77.4%	-1.0	32.1%	33.2%	1.1	5.2%	5.5%	0.3
North Carolina	77.0%	77.0%	0.0	28.2%	29.4%	1.2	4.3%	4.0%	-0.3
North Dakota	57.5%	50.5%	-7.0	9.7%	16.9%	7.2	2.0% <sup>^</sup>	1.5% <sup>^</sup>	-0.5
Ohio	75.3%	76.2%	1.0	21.7%	21.4%	-0.3	2.7%	2.6%	-0.1
Oklahoma	75.1%	72.0%	-3.1	27.2%	30.4%	3.2	7.4%	6.1%	-1.3
Oregon	78.2%	76.3%	-1.9	28.3%	32.5%	4.1	3.2%	4.8%	1.6
Pennsylvania	72.5%	72.9%	0.4	25.0%	24.5%	-0.5	3.8%	3.5%	-0.3
Rhode Island	70.9%	81.7%	10.9 *	28.0%	32.2%	4.3	1.8% <sup>^</sup>	2.8% <sup>^</sup>	1.1
South Carolina	77.6%	74.4%	-3.2	28.5%	27.2%	-1.3	3.8%	3.6%	-0.2
South Dakota	69.3%	70.1%	0.9	14.6%	16.8%	2.2	3.0% <sup>^</sup>	1.7% <sup>^</sup>	-1.3
Tennessee	74.3%	74.5%	0.2	24.9%	26.4%	1.4	4.1%	4.5%	0.4
Texas	71.8%	71.3%	-0.5	27.3%	27.5%	0.1	4.2%	3.7%	-0.5
Utah	51.0%	52.8%	1.8	8.5%	9.2%	0.8	1.8%	2.1%	0.2
Vermont	88.0%	88.5%	0.5	46.3%	51.1%	4.9	8.7% <sup>^</sup>	8.0%	-0.7
Virginia	66.3%	66.7%	0.5	17.4%	20.9%	3.6 *	2.0%	1.7%	-0.4
Washington	75.0%	75.1%	0.1	35.8%	34.2%	-1.6	4.1%	4.7%	0.6
West Virginia	80.6%	82.4%	1.9	31.5%	29.3%	-2.2	5.9%	2.3%	-3.6 *
Wisconsin	69.7%	70.2%	0.5	19.2%	19.9%	0.8	2.6%	2.0%	-0.6
Wyoming	59.2%	61.1%	1.9	13.6%	15.2%	1.6	4.1% <sup>^</sup>	6.4% <sup>^</sup>	2.3
United States	74.6%	74.0%	-0.6 *	27.6%	28.8%	1.2 *	4.0%	4.1%	0.2

**Notes:** Significant difference between periods is indicated by \* (95% confidence level). Tables may not add up precisely due to rounding. Estimates with relative standard errors greater than 30% are indicated by <sup>^</sup>. Please see the methods section for variable definitions. FPG=Federal poverty guidelines.

**Source:** American Community Surveys as analyzed by SHADAC.

## Uninsured Children by Income, 2016 to 2017

State	0-138% FPG			139-400% FPG			401%+ FPG		
	2016	2017	Point Change	2016	2017	Point Change	2016	2017	Point Change
Alabama	3.5%	4.1%	0.6	2.7%	2.7%	-0.1	0.9% <sup>^</sup>	1.9% <sup>^</sup>	1.0
Alaska	13.8%	10.5%	-3.3	12.5%	11.3%	-1.2	3.4% <sup>^</sup>	4.4% <sup>^</sup>	1.0
Arizona	10.4%	10.0%	-0.4	7.8%	8.8%	1.0	2.9%	3.2%	0.3
Arkansas	4.3%	6.2%	1.9	4.7%	4.8%	0.1	2.4% <sup>^</sup>	2.1%	-0.2
California	4.4%	4.2%	-0.2	3.5%	3.5%	0.0	1.3%	1.6%	0.3
Colorado	6.4%	5.6%	-0.8	5.6%	5.7%	0.0	1.5%	1.9%	0.4
Connecticut	2.5%	4.8%	2.3 *	3.8%	3.3%	-0.5	1.6%	2.2%	0.6
Delaware	5.4% <sup>^</sup>	6.7%	1.2	4.3%	3.9% <sup>^</sup>	-0.5	1.5% <sup>^</sup>	0.5% <sup>^</sup>	-0.9
D.C.	6.2% <sup>^</sup>	--	--	3.1% <sup>^</sup>	4.8% <sup>^</sup>	1.8	0.6% <sup>^</sup>	0.8% <sup>^</sup>	0.2
Florida	7.9%	8.7%	0.8	7.3%	7.9%	0.7	3.3%	3.8%	0.5
Georgia	8.6%	10.1%	1.5	7.6%	7.7%	0.1	2.4%	2.8%	0.4
Hawaii	3.4%	3.1%	-0.3	1.3%	3.1% <sup>^</sup>	1.7	2.6% <sup>^</sup>	0.7% <sup>^</sup>	-2.0
Idaho	6.1%	4.6%	-1.5	5.4%	6.5%	1.1	4.3% <sup>^</sup>	2.3% <sup>^</sup>	-2.0
Illinois	3.6%	3.9%	0.3	2.9%	3.9%	1.0 *	1.4%	1.1%	-0.3
Indiana	7.2%	8.7%	1.5	6.9%	7.0%	0.1	1.4%	2.4%	1.0
Iowa	3.7%	4.5%	0.8	2.0%	2.7%	0.7	1.3% <sup>^</sup>	1.2%	-0.1
Kansas	8.2%	9.8%	1.6	4.5%	5.2%	0.7	2.2%	1.6%	-0.7
Kentucky	4.5%	5.5%	1.1	3.3%	4.3%	1.1	1.0%	1.3%	0.3
Louisiana	4.0%	3.2%	-0.9	3.9%	3.7%	-0.2	2.2%	1.8%	-0.4
Maine	4.9% <sup>^</sup>	5.7% <sup>^</sup>	0.7	6.7%	5.1%	-1.5	2.6% <sup>^</sup>	1.9% <sup>^</sup>	-0.7
Maryland	4.8%	6.8%	2.0	4.3%	5.0%	0.6	1.6%	1.7%	0.1
Massachusetts	1.1%	2.0%	0.8	1.5%	1.9%	0.4	0.6%	0.8%	0.2
Michigan	4.4%	3.6%	-0.8	3.5%	3.7%	0.2	1.1%	1.0%	-0.1
Minnesota	5.0%	6.2%	1.1	3.4%	3.9%	0.5	1.6%	1.2%	-0.4
Mississippi	5.2%	4.4%	-0.7	5.2%	6.9%	1.7	2.1%	1.5% <sup>^</sup>	-0.7
Missouri	8.1%	7.5%	-0.5	4.6%	5.0%	0.4	2.4%	1.3% <sup>^</sup>	-1.1 *
Montana	7.4%	9.6%	2.2	3.9%	7.4%	3.5	3.0% <sup>^</sup>	2.7% <sup>^</sup>	-0.4
Nebraska	10.7%	10.6%	-0.1	5.7%	5.3%	-0.4	1.0% <sup>^</sup>	2.0% <sup>^</sup>	1.0
Nevada	8.9%	10.0%	1.1	6.6%	7.5%	0.9	1.8%	3.9%	2.2 *
New Hampshire	6.8% <sup>^</sup>	5.3% <sup>^</sup>	-1.5	3.9%	3.0%	-0.9	1.4% <sup>^</sup>	0.7% <sup>^</sup>	-0.6
New Jersey	5.6%	6.3%	0.7	4.4%	4.5%	0.1	1.2%	1.6%	0.4
New Mexico	5.7%	5.1%	-0.5	7.1%	5.0%	-2.0	2.3% <sup>^</sup>	2.5%	0.1
New York	3.2%	3.9%	0.6	3.2%	2.8%	-0.4	1.3%	1.6%	0.3
North Carolina	5.6%	6.6%	1.0	5.5%	5.3%	-0.2	1.8%	2.1%	0.3
North Dakota	13.2%	16.1%	3.0	14.3%	6.5%	-7.9 *	3.2% <sup>^</sup>	3.3% <sup>^</sup>	0.1
Ohio	4.6%	4.6%	0.0	4.2%	5.1%	0.9	1.5%	2.1%	0.5
Oklahoma	7.7%	7.7%	0.0	9.2%	9.0%	-0.2	3.5%	4.1%	0.6
Oregon	3.2%	3.7%	0.5	4.9%	3.8%	-1.1	1.0%	2.1%	1.1 *
Pennsylvania	6.2%	6.5%	0.3	5.8%	5.4%	-0.4	1.8%	1.9%	0.0
Rhode Island	2.2% <sup>^</sup>	4.3% <sup>^</sup>	2.1	2.4% <sup>^</sup>	2.1% <sup>^</sup>	-0.4	0.8% <sup>^</sup>	0.6% <sup>^</sup>	-0.2
South Carolina	3.9%	7.4%	3.4 *	5.3%	5.4%	0.1	2.1%	2.2%	0.0
South Dakota	5.0%	11.6%	6.5 *	6.5%	6.4%	-0.1	0.5% <sup>^</sup>	1.5% <sup>^</sup>	1.1
Tennessee	4.1%	5.8%	1.6 *	4.4%	4.1%	-0.3	1.4%	2.9%	1.6 *
Texas	11.8%	12.6%	0.9	11.6%	13.0%	1.4 *	3.7%	4.5%	0.7
Utah	7.5%	11.3%	3.8	6.4%	6.7%	0.2	1.5%	3.3%	1.8 *
Vermont	2.1% <sup>^</sup>	1.2% <sup>^</sup>	-0.9	0.7% <sup>^</sup>	2.2% <sup>^</sup>	1.5	0.9% <sup>^</sup>	0.4% <sup>^</sup>	-0.5
Virginia	8.1%	7.2%	-0.9	6.6%	5.7%	-0.9	1.8%	2.1%	0.4
Washington	3.8%	4.0%	0.2	2.8%	2.6%	-0.2	1.1%	1.8%	0.6
West Virginia	1.4%	2.9%	1.5	3.0%	2.9%	-0.1	0.2% <sup>^</sup>	1.8% <sup>^</sup>	1.6
Wisconsin	6.0%	6.6%	0.5	3.2%	4.4%	1.1	1.6%	1.5%	-0.1
Wyoming	9.3%	16.6%	7.3	8.9% <sup>^</sup>	10.5%	1.5	4.1% <sup>^</sup>	3.7% <sup>^</sup>	-0.4
United States	6.2%	6.7%	0.5 *	5.5%	5.8%	0.3 *	1.8%	2.1%	0.3 *

**Notes:** Significant difference between periods is indicated by \* (95% confidence level). Tables may not add up precisely due to rounding. Estimates with relative standard errors greater than 30% are indicated by <sup>^</sup>. Estimates with no observed sample cases are indicated by --. Please see the methods section for variable definitions. FPG=Federal poverty guidelines.

**Source:** American Community Surveys as analyzed by SHADAC.

# Appendix: Table 6

## Children with Private Insurance by Race/Ethnicity, 2016 to 2017

State	White			Nonwhite			Hispanic		
	2016	2017	Point Change	2016	2017	Point Change	2016	2017	Point Change
Alabama	68.5%	67.2%	-1.3	38.6%	37.9%	-0.7	25.7%	35.1%	9.5
Alaska	74.6%	73.1%	-1.5	39.2%	38.0%	-1.2	50.4%	64.5%	14.1
Arizona	74.7%	75.0%	0.3	51.4%	52.1%	0.7	38.6%	41.7%	3.1
Arkansas	56.7%	56.0%	-0.7	34.3%	31.4%	-2.9	26.6%	30.3%	3.7
California	77.0%	77.7%	0.8	66.4%	67.8%	1.5	38.5%	40.9%	2.4 *
Colorado	76.3%	75.8%	-0.5	59.3%	63.3%	4.0	40.6%	39.2%	-1.4
Connecticut	82.4%	81.3%	-1.1	56.5%	61.5%	5.0	36.8%	37.0%	0.2
Delaware	77.9%	79.6%	1.7	57.3%	60.9%	3.7	44.6%	41.7%	-2.9
D.C.	96.8%	96.7%	-0.1	38.3%	36.3%	-2.0	46.4%	53.2%	6.9
Florida	67.1%	66.5%	-0.6	44.1%	43.0%	-1.1	41.4%	40.0%	-1.4
Georgia	69.5%	72.2%	2.8 *	49.3%	48.9%	-0.4	32.1%	30.6%	-1.5
Hawaii	79.1%	87.5%	8.4	69.6%	68.1%	-1.5	67.4%	61.8%	-5.6
Idaho	69.5%	68.0%	-1.5	58.3%	60.8%	2.6	32.4%	39.6%	7.2
Illinois	77.7%	77.2%	-0.5	48.3%	49.3%	1.0	41.3%	42.2%	0.9
Indiana	70.4%	69.4%	-1.0	44.4%	47.1%	2.8	40.3%	37.4%	-2.9
Iowa	73.5%	76.3%	2.7	45.8%	51.0%	5.2	46.2%	45.5%	-0.7
Kansas	76.3%	76.1%	-0.2	56.7%	53.9%	-2.8	46.0%	46.4%	0.4
Kentucky	60.4%	59.6%	-0.8	41.7%	40.7%	-1.0	35.8%	35.0%	-0.9
Louisiana	64.6%	65.9%	1.3	31.5%	30.1%	-1.4	36.3%	41.7%	5.3
Maine	68.3%	68.7%	0.4	44.9%	42.2%	-2.6	38.5%	56.4%	17.9
Maryland	80.2%	81.0%	0.9	62.0%	61.3%	-0.6	41.3%	40.9%	-0.4
Massachusetts	81.2%	81.6%	0.5	59.3%	60.6%	1.4	33.4%	33.8%	0.4
Michigan	71.5%	70.9%	-0.7	44.5%	45.6%	1.1	41.7%	46.8%	5.1
Minnesota	80.9%	81.1%	0.1	48.2%	51.9%	3.8	45.5%	39.2%	-6.3
Mississippi	65.5%	67.0%	1.6	29.5%	29.4%	-0.1	34.9%	35.0%	0.1
Missouri	70.2%	70.8%	0.5	52.9%	46.1%	-6.8 *	47.9%	52.2%	4.3
Montana	63.4%	63.9%	0.6	35.7%	24.7%	-11.0	53.2%	50.6%	-2.6
Nebraska	76.9%	80.4%	3.5	55.4%	43.0%	-12.4 *	36.4%	46.1%	9.7
Nevada	77.6%	76.3%	-1.3	58.9%	55.5%	-3.4	45.6%	49.4%	3.8
New Hampshire	73.3%	71.0%	-2.3	62.8%	66.6%	3.7	55.7%	45.1%	-10.6
New Jersey	80.8%	81.9%	1.2	65.7%	64.3%	-1.4	42.4%	44.8%	2.4
New Mexico	65.6%	67.3%	1.7	36.5%	30.0%	-6.5	32.8%	36.7%	3.9
New York	73.0%	74.0%	1.0	51.7%	51.7%	0.0	39.1%	40.0%	0.9
North Carolina	71.0%	70.4%	-0.6	44.0%	46.8%	2.8	28.0%	28.4%	0.4
North Dakota	82.0%	82.2%	0.2	39.3%	53.6%	14.3	40.3%	41.9% <sup>^</sup>	1.6
Ohio	71.1%	71.2%	0.1	41.2%	42.8%	1.5	43.9%	37.9%	-6.0
Oklahoma	63.7%	64.1%	0.4	41.6%	42.4%	0.8	31.6%	33.8%	2.3
Oregon	67.9%	68.2%	0.3	64.9%	62.7%	-2.2	35.4%	37.0%	1.7
Pennsylvania	71.0%	73.8%	2.8 *	50.2%	50.7%	0.5	36.5%	36.5%	0.0
Rhode Island	81.3%	79.1%	-2.2	59.6%	53.9%	-5.7	39.4%	32.3%	-7.1
South Carolina	68.9%	69.3%	0.5	41.0%	39.7%	-1.3	28.4%	33.9%	5.5
South Dakota	80.5%	78.2%	-2.3	32.8%	34.2%	1.5	37.8%	60.1%	22.2
Tennessee	65.6%	65.1%	-0.5	45.5%	46.1%	0.6	34.0%	35.1%	1.1
Texas	74.6%	75.6%	1.0	56.7%	56.8%	0.1	35.4%	36.7%	1.2
Utah	83.4%	82.9%	-0.4	69.5%	76.4%	6.9	56.8%	47.7%	-9.1 *
Vermont	56.2%	53.4%	-2.8	42.5%	37.7%	-4.8	73.2%	40.2% <sup>^</sup>	-33.0
Virginia	80.3%	80.5%	0.1	62.5%	62.9%	0.5	52.6%	51.7%	-0.9
Washington	71.7%	72.1%	0.4	62.5%	63.6%	1.0	36.2%	37.5%	1.3
West Virginia	54.9%	55.5%	0.5	35.0%	43.3%	8.3	36.1%	38.6%	2.5
Wisconsin	79.5%	78.5%	-1.1	45.5%	51.6%	6.1	43.8%	46.9%	3.1
Wyoming	75.3%	72.5%	-2.8	49.1%	47.0%	-2.1	62.3%	47.3%	-15.0
United States	72.8%	73.1%	0.3	51.6%	51.9%	0.3	38.4%	39.6%	1.2 *

**Notes:** Significant difference between periods is indicated by \* (95% confidence level). Tables may not add up precisely due to rounding. Estimates with relative standard errors greater than 30% are indicated by ^. Please see the methods section for variable definitions.  
**Source:** American Community Surveys as analyzed by SHADAC.

## Children with Medicaid by Race/Ethnicity, 2016 to 2017

State	White			Nonwhite			Hispanic		
	2016	2017	Point Change	2016	2017	Point Change	2016	2017	Point Change
Alabama	29.2%	30.0%	0.9	59.2%	58.9%	-0.3	67.1%	59.3%	-7.8
Alaska	17.8%	20.7%	2.9	45.3%	47.0%	1.7	42.3%	31.8%	-10.5
Arizona	21.1%	19.5%	-1.6	41.0%	40.0%	-1.0	50.4%	48.3%	-2.1
Arkansas	39.5%	40.8%	1.3	63.3%	63.5%	0.2	64.0%	57.5%	-6.5
California	20.8%	19.9%	-1.0	31.3%	29.5%	-1.8 *	57.4%	55.3%	-2.0 *
Colorado	20.5%	20.9%	0.5	37.9%	33.0%	-5.0	52.0%	54.5%	2.5
Connecticut	15.5%	16.7%	1.1	40.6%	35.1%	-5.5	59.6%	56.9%	-2.7
Delaware	18.6%	18.2%	-0.4	38.9%	35.9%	-3.0	50.3%	49.8%	-0.5
D.C.	2.8% <sup>^</sup>	2.2% <sup>^</sup>	-0.5	58.3%	62.1%	3.8	47.0%	46.0%	-1.0
Florida	27.7%	27.2%	-0.5	49.4%	50.2%	0.8	50.1%	51.1%	1.0
Georgia	24.9%	22.7%	-2.2 *	45.0%	44.5%	-0.5	54.7%	53.4%	-1.3
Hawaii	17.2%	9.9%	-7.3	28.2%	29.0%	0.8	30.8%	37.4%	6.6
Idaho	26.5%	28.0%	1.5	33.6%	28.4%	-5.2	57.3%	52.5%	-4.8
Illinois	20.0%	20.2%	0.2	48.8%	47.7%	-1.0	55.4%	53.6%	-1.8
Indiana	23.5%	24.8%	1.3	53.0%	46.9%	-6.1 *	51.7%	53.1%	1.4
Iowa	24.5%	21.3%	-3.3 *	53.7%	45.3%	-8.4	48.0%	51.7%	3.7
Kansas	19.4%	19.4%	0.0	38.8%	40.5%	1.7	46.4%	45.0%	-1.4
Kentucky	36.7%	36.6%	0.0	56.1%	56.0%	-0.1	54.4%	55.3%	0.9
Louisiana	32.5%	31.4%	-1.1	65.3%	67.4%	2.1	52.1%	49.6%	-2.5
Maine	26.8%	26.9%	0.1	49.3%	53.3%	4.0	55.5%	43.6%	-11.9
Maryland	17.3%	16.3%	-1.0	35.2%	35.1%	0.0	51.5%	49.7%	-1.8
Massachusetts	18.0%	17.3%	-0.7	40.1%	37.0%	-3.1	64.7%	64.3%	-0.4
Michigan	25.4%	26.1%	0.7	52.8%	51.9%	-0.9	53.5%	48.9%	-4.6
Minnesota	16.8%	16.4%	-0.4	48.4%	43.4%	-5.0	45.4%	53.6%	8.2
Mississippi	30.0%	27.0%	-2.9	66.0%	67.1%	1.1	55.3%	53.4%	-1.9
Missouri	25.0%	24.8%	-0.1	42.4%	48.0%	5.6	43.1%	41.1%	-2.0
Montana	33.7%	31.4%	-2.4	53.2%	59.0%	5.9	36.9%	45.4%	8.5
Nebraska	20.1%	15.3%	-4.7 *	33.6%	49.0%	15.4 *	51.6%	44.5%	-7.1
Nevada	18.4%	18.3%	-0.1	37.2%	38.6%	1.4	44.7%	40.3%	-4.3
New Hampshire	23.8%	26.3%	2.6	30.8%	31.6%	0.8	42.3%	52.3%	10.0
New Jersey	17.3%	15.9%	-1.4	31.5%	31.7%	0.1	51.2%	49.5%	-1.7
New Mexico	29.6%	29.0%	-0.6	52.7%	60.0%	7.3	62.4%	59.8%	-2.7
New York	24.4%	23.2%	-1.2	45.8%	45.7%	-0.1	58.2%	57.1%	-1.1
North Carolina	25.7%	26.2%	0.5	52.5%	49.0%	-3.5 *	60.8%	60.5%	-0.2
North Dakota	10.9%	12.2%	1.3	40.5%	34.3%	-6.2	36.7% <sup>^</sup>	46.0% <sup>^</sup>	9.3
Ohio	25.3%	24.6%	-0.7	56.0%	53.8%	-2.2	50.2%	55.9%	5.7
Oklahoma	31.6%	31.0%	-0.6	46.8%	46.4%	-0.4	59.2%	56.1%	-3.1
Oregon	29.6%	28.9%	-0.7	31.8%	33.8%	2.0	59.0%	59.0%	0.0
Pennsylvania	23.9%	21.4%	-2.5 *	47.3%	46.1%	-1.2	57.4%	58.2%	0.8
Rhode Island	16.7%	19.3%	2.6	38.3%	43.7%	5.4	58.4%	64.2%	5.8
South Carolina	26.9%	26.4%	-0.6	56.1%	54.7%	-1.3	63.1%	55.4%	-7.7
South Dakota	16.2%	17.5%	1.2	57.3%	53.0%	-4.3	59.8%	33.9%	-26.0 *
Tennessee	31.5%	31.4%	-0.1	51.7%	49.5%	-2.1	54.4%	53.4%	-1.0
Texas	19.2%	17.5%	-1.7 *	37.1%	35.6%	-1.5	51.1%	49.0%	-2.1 *
Utah	12.2%	11.9%	-0.3	25.8%	19.5%	-6.3	32.1%	36.8%	4.7
Vermont	42.7%	45.1%	2.4	56.2%	62.3%	6.1	26.8% <sup>^</sup>	59.8%	33.0
Virginia	16.3%	15.6%	-0.6	32.7%	33.4%	0.6	34.1%	37.7%	3.6
Washington	26.4%	25.7%	-0.7	34.5%	33.3%	-1.2	60.0%	58.8%	-1.2
West Virginia	43.5%	41.9%	-1.6	60.8%	53.8%	-7.0	62.5%	58.4%	-4.2
Wisconsin	17.4%	17.7%	0.4	51.9%	44.6%	-7.2	49.9%	48.3%	-1.6
Wyoming	19.0%	20.3%	1.3	36.3%	33.9%	-2.4	23.7%	33.3%	9.6
United States	23.6%	23.0%	-0.6 *	44.5%	43.6%	-0.9 *	53.9%	52.6%	-1.3 *

**Notes:** Significant difference between periods is indicated by \* (95% confidence level). Tables may not add up precisely due to rounding. Estimates with relative standard errors greater than 30% are indicated by <sup>^</sup>. Please see the methods section for variable definitions.

**Source:** American Community Surveys as analyzed by SHADAC.



## Uninsured Children by Race/Ethnicity, 2016 to 2017

State	White			Nonwhite			Hispanic		
	2016	2017	Point Change	2016	2017	Point Change	2016	2017	Point Change
Alabama	2.3%	2.7%	0.4	2.3%	3.2%	1.0	7.3%	5.5%	-1.7
Alaska	7.6%	6.2%	-1.4	15.5%	15.1%	-0.4	7.3%^	3.7%^	-3.6
Arizona	4.2%	5.5%	1.3 *	7.6%	7.9%	0.3	11.0%	10.1%	-1.0
Arkansas	3.8%	3.2%	-0.6	2.4%	5.1%	2.8 *	9.4%	12.3%	2.8
California	2.2%	2.4%	0.2	2.3%	2.6%	0.3	4.1%	3.8%	-0.3
Colorado	3.2%	3.2%	0.0	2.8%	3.8%	1.0	7.4%	6.3%	-1.1
Connecticut	2.0%	2.1%	0.0	2.9%	3.4%	0.5	3.6%	6.1%	2.5
Delaware	3.5%	2.1%^	-1.3	3.8%^	3.2%^	-0.6	5.1%^	8.5%^	3.4
D.C.	0.5%^	1.1%^	0.6	3.4%^	1.7%^	-1.7	6.7%^	0.8%^	-5.9
Florida	5.2%	6.3%	1.1 *	6.5%	6.8%	0.3	8.5%	8.9%	0.4
Georgia	5.6%	5.0%	-0.6	5.7%	6.6%	0.9	13.2%	16.1%	2.9
Hawaii	3.8%^	2.6%^	-1.1	2.2%	2.9%	0.7	1.8%^	0.8%^	-1.0
Idaho	4.0%	4.0%	0.0	8.1%^	10.8%^	2.7	10.3%	7.9%	-2.4
Illinois	2.3%	2.6%	0.2	2.9%	2.9%	0.0	3.3%	4.2%	0.9
Indiana	6.1%	5.8%	-0.2	2.7%	6.0%	3.3 *	8.1%	9.6%	1.5
Iowa	1.9%	2.5%	0.5	0.5%^	3.7%^	3.3 *	5.8%^	2.8%^	-3.0
Kansas	4.2%	4.5%	0.2	4.5%	5.7%	1.2	7.6%	8.6%	1.0
Kentucky	2.9%	3.8%	0.9	2.2%^	3.3%	1.1	9.7%	9.7%	-0.1
Louisiana	2.9%	2.8%	-0.2	3.2%	2.5%	-0.7	11.6%	8.7%	-2.9
Maine	4.8%	4.3%	-0.5	5.8%^	4.5%^	-1.4	6.1%^	--	--
Maryland	2.5%	2.7%	0.2	2.9%	3.6%	0.7	7.2%	9.4%	2.2
Massachusetts	0.9%	1.0%	0.2	0.6%	2.3%	1.8 *	1.9%	1.9%	0.0
Michigan	3.1%	3.0%	-0.1	2.7%	2.5%	-0.2	4.8%	4.3%	-0.5
Minnesota	2.3%	2.5%	0.2	3.4%	4.7%	1.2	9.1%	7.2%	-1.8
Mississippi	4.6%	5.9%	1.4	4.4%	3.5%	-1.0	9.8%^	11.6%	1.8
Missouri	4.8%	4.4%	-0.4	4.7%	5.8%	1.2	9.0%	6.6%	-2.4
Montana	2.9%	4.7%	1.8	11.2%	16.3%	5.1	9.9%^	4.0%^	-6.0
Nebraska	3.1%	4.3%	1.2	11.0%	8.0%^	-3.0	12.0%	9.4%	-2.6
Nevada	4.0%	5.4%	1.4	4.0%	5.9%	1.9	9.7%	10.2%	0.6
New Hampshire	2.9%	2.7%	-0.3	6.4%^	1.8%^	-4.6	2.0%^	2.6%^	0.6
New Jersey	1.9%	2.2%	0.2	2.8%	4.0%	1.3 *	6.4%	5.8%	-0.7
New Mexico	4.7%	3.7%	-1.0	10.8%	10.0%	-0.8	4.7%	3.5%	-1.2
New York	2.6%	2.8%	0.2	2.5%	2.6%	0.1	2.7%	2.9%	0.2
North Carolina	3.3%	3.4%	0.1	3.4%	4.2%	0.7	11.2%	11.1%	-0.1
North Dakota	7.1%	5.5%	-1.5	20.3%	12.1%	-8.2	23.0%^	12.1%^	-10.9
Ohio	3.6%	4.2%	0.6	2.7%	3.4%	0.7	5.9%	6.2%	0.3
Oklahoma	4.7%	4.9%	0.2	11.6%	11.2%	-0.4	9.2%	10.0%	0.8
Oregon	2.5%	3.0%	0.5	3.2%	3.4%	0.2	5.6%	3.9%	-1.7
Pennsylvania	5.1%	4.8%	-0.3	2.5%	3.2%	0.7	6.1%	5.3%	-0.8
Rhode Island	2.0%	1.6%	-0.4	2.1%^	2.4%^	0.3	2.2%^	3.6%^	1.4
South Carolina	4.2%	4.3%	0.1	3.0%	5.6%	2.6 *	8.5%	10.7%	2.2
South Dakota	3.2%^	4.3%	1.1	9.9%	12.8%	2.9	2.3%^	6.1%^	3.7
Tennessee	2.9%	3.5%	0.6	2.9%	4.4%	1.5 *	11.7%	11.6%	-0.1
Texas	6.2%	6.9%	0.7	6.3%	7.6%	1.4 *	13.4%	14.3%	0.9
Utah	4.4%	5.2%	0.8	4.8%^	4.1%	-0.7	11.2%	15.5%	4.4
Vermont	1.1%^	1.5%^	0.5	1.3%^	--	--	--	--	--
Virginia	3.4%	3.9%	0.5	4.8%	3.7%	-1.1	13.2%	10.6%	-2.7
Washington	1.9%	2.2%	0.3	2.9%	3.1%	0.2	3.8%	3.7%	-0.1
West Virginia	1.6%	2.6%	1.1	4.2%^	2.9%^	-1.3	1.4%^	3.0%^	1.7
Wisconsin	3.1%	3.8%	0.7	2.7%	3.8%	1.1	6.4%	4.9%	-1.5
Wyoming	5.7%	7.3%	1.6	14.5%^	19.1%^	4.5	13.9%^	19.4%^	5.5
United States	3.6%	3.9%	0.3 *	4.0%	4.6%	0.6 *	7.6%	7.8%	0.1

**Notes:** Significant difference between periods is indicated by \* (95% confidence level). Tables may not add up precisely due to rounding. Estimates with relative standard errors greater than 30% are indicated by ^. Estimates with no observed sample cases are indicated by --. Please see the methods section for variable definitions.

**Source:** American Community Surveys as analyzed by SHADAC.

## Children with Private Insurance by Parental Education, 2016 to 2017

State	High school or less			Some college			Bachelor's degree or higher		
	2016	2017	Point Change	2016	2017	Point Change	2016	2017	Point Change
Alabama	26.4%	26.4%	0.0	52.7%	50.4%	-2.2	86.4%	86.7%	0.3
Alaska	27.5%	23.5%	-4.1	51.5%	54.4%	2.9	92.7%	87.3%	-5.3
Arizona	23.5%	25.3%	1.8	56.9%	57.0%	0.1	85.4%	86.5%	1.0
Arkansas	25.9%	22.4%	-3.5	43.3%	39.7%	-3.6	80.0%	81.5%	1.6
California	24.3%	25.9%	1.6 *	55.4%	55.4%	0.0	86.1%	86.2%	0.1
Colorado	30.2%	31.9%	1.7	56.8%	52.0%	-4.8 *	86.1%	85.0%	-1.1
Connecticut	28.2%	34.5%	6.3 *	55.6%	56.8%	1.3	88.8%	87.5%	-1.3
Delaware	34.7%	41.3%	6.6	67.6%	62.3%	-5.4	89.8%	92.0%	2.2
D.C.	15.3%	15.0%	-0.2	42.3%	32.0%	-10.3	88.6%	91.2%	2.6
Florida	24.8%	23.6%	-1.2	51.1%	48.6%	-2.4 *	80.0%	77.8%	-2.2 *
Georgia	25.4%	26.4%	1.0	53.4%	52.9%	-0.5	84.5%	85.3%	0.9
Hawaii	47.9%	46.5%	-1.4	68.3%	66.3%	-2.0	88.5%	88.3%	-0.2
Idaho	31.2%	36.3%	5.1	57.4%	60.5%	3.1	84.5%	80.8%	-3.8
Illinois	28.8%	30.0%	1.2	58.2%	56.9%	-1.3	87.8%	87.5%	-0.3
Indiana	34.6%	34.1%	-0.4	63.3%	59.0%	-4.3 *	88.0%	88.7%	0.7
Iowa	38.7%	40.3%	1.6	62.7%	67.6%	4.9	89.5%	87.9%	-1.6
Kansas	40.1%	41.5%	1.4	62.3%	59.2%	-3.1	90.8%	90.4%	-0.4
Kentucky	30.6%	27.9%	-2.7	50.9%	51.5%	0.6	87.3%	85.4%	-1.8
Louisiana	23.8%	25.5%	1.6	47.8%	45.9%	-2.0	84.8%	83.4%	-1.4
Maine	34.3%	33.0%	-1.3	60.0%	61.5%	1.5	84.6%	85.2%	0.6
Maryland	33.2%	28.4%	-4.7 *	57.8%	61.0%	3.1	89.5%	89.5%	0.0
Massachusetts	28.1%	30.7%	2.5	57.0%	57.1%	0.1	89.6%	90.9%	1.3
Michigan	30.6%	30.5%	-0.1	59.3%	59.6%	0.4	89.5%	88.1%	-1.4
Minnesota	36.3%	37.2%	0.9	64.7%	65.7%	1.0	89.8%	88.4%	-1.4
Mississippi	19.4%	23.1%	3.7	47.5%	45.5%	-1.9	79.7%	82.6%	2.8
Missouri	38.1%	37.4%	-0.8	61.7%	59.4%	-2.3	89.5%	88.8%	-0.7
Montana	31.4%	28.1%	-3.3	54.1%	45.1%	-9.0	77.3%	80.1%	2.8
Nebraska	33.8%	36.8%	3.0	62.9%	62.9%	0.0	91.5%	93.2%	1.6
Nevada	38.9%	41.2%	2.4	64.3%	64.3%	0.0	88.7%	84.6%	-4.1 *
New Hampshire	37.5%	35.3%	-2.2	66.8%	59.8%	-7.0	86.4%	89.6%	3.2
New Jersey	34.0%	35.4%	1.4	59.8%	56.5%	-3.3	88.3%	87.8%	-0.5
New Mexico	15.8%	21.1%	5.3	38.7%	40.0%	1.3	80.4%	75.7%	-4.7
New York	28.9%	29.2%	0.3	55.5%	54.6%	-0.9	84.0%	84.1%	0.1
North Carolina	22.8%	21.8%	-0.9	50.8%	50.3%	-0.5	86.6%	85.4%	-1.2
North Dakota	42.8%	52.3%	9.5	67.1%	64.6%	-2.5	89.0%	93.2%	4.2
Ohio	33.7%	35.2%	1.5	58.2%	58.1%	-0.2	91.3%	89.8%	-1.5
Oklahoma	26.4%	29.4%	3.0	49.5%	50.2%	0.7	83.1%	80.8%	-2.3
Oregon	29.1%	28.5%	-0.7	57.4%	56.1%	-1.3	85.4%	84.8%	-0.6
Pennsylvania	35.3%	33.7%	-1.5	56.9%	59.5%	2.7	87.4%	89.0%	1.6
Rhode Island	41.9%	34.1%	-7.8	59.1%	58.4%	-0.7	90.2%	90.5%	0.3
South Carolina	27.9%	24.7%	-3.2	50.9%	52.3%	1.4	83.8%	85.9%	2.0
South Dakota	42.3%	39.8%	-2.5	61.3%	61.9%	0.6	90.7%	88.7%	-2.0
Tennessee	29.4%	32.7%	3.2	58.8%	53.7%	-5.1 *	86.9%	86.1%	-0.7
Texas	23.2%	22.7%	-0.5	53.2%	54.9%	1.7	85.8%	84.4%	-1.4 *
Utah	51.6%	46.9%	-4.8	75.4%	74.3%	-1.1	91.1%	89.9%	-1.1
Vermont	25.6%	24.6%	-1.0	44.5%	39.1%	-5.4	76.6%	71.6%	-5.0
Virginia	34.4%	36.2%	1.8	65.4%	63.1%	-2.3	91.5%	91.4%	-0.2
Washington	28.7%	29.3%	0.7	58.7%	59.0%	0.3	85.6%	85.7%	0.1
West Virginia	30.0%	29.4%	-0.6	52.7%	53.1%	0.4	84.7%	87.1%	2.4
Wisconsin	41.3%	38.0%	-3.3	64.5%	67.1%	2.6	91.5%	91.3%	-0.2
Wyoming	58.6%	38.8%	-19.8 *	69.5%	62.6%	-6.9	85.0%	90.1%	5.1
United States	28.4%	28.8%	0.4	56.4%	55.8%	-0.5	86.8%	86.3%	-0.4 *

**Notes:** Significant difference between periods is indicated by \* (95% confidence level). Tables may not add up precisely due to rounding. Estimates with relative standard errors greater than 30% are indicated by ^. Please see the methods section for variable definitions.  
**Source:** American Community Surveys as analyzed by SHADAC.

## Children with Medicaid by Parental Education, 2016 to 2017

State	High school or less			Some college			Bachelor's degree or higher		
	2016	2017	Point Change	2016	2017	Point Change	2016	2017	Point Change
Alabama	69.7%	69.2%	-0.5	45.0%	46.5%	1.5	12.1%	11.4%	-0.8
Alaska	53.0%	63.6%	10.7	36.4%	33.0%	-3.4	4.1% <sup>^</sup>	8.6%	4.6
Arizona	64.2%	61.8%	-2.4	36.3%	36.3%	-0.1	10.7%	8.8%	-1.9
Arkansas	68.6%	70.5%	2.0	52.4%	55.7%	3.2	18.6%	16.2%	-2.4
California	70.8%	69.7%	-1.1	41.6%	41.3%	-0.2	12.4%	12.1%	-0.3
Colorado	60.5%	61.1%	0.6	39.3%	43.1%	3.8	11.9%	12.6%	0.7
Connecticut	68.3%	58.4%	-9.9 *	41.4%	40.9%	-0.4	9.5%	10.7%	1.2
Delaware	58.7%	53.7%	-5.0	29.2%	34.2%	5.0	8.2%	6.5%	-1.7
D.C.	80.1%	84.6%	4.4	51.7%	66.3%	14.6	10.4%	6.9%	-3.5
Florida	65.6%	66.5%	0.9	42.5%	44.3%	1.8	15.8%	17.2%	1.3
Georgia	64.1%	62.1%	-2.0	39.7%	39.9%	0.2	12.2%	11.2%	-1.0
Hawaii	49.6%	49.5%	0.0	29.3%	31.8%	2.5	9.6%	9.9%	0.3
Idaho	60.3%	57.2%	-3.2	36.6%	33.4%	-3.2	11.9%	16.1%	4.2
Illinois	67.3%	65.7%	-1.5	39.6%	39.9%	0.3	10.3%	10.7%	0.4
Indiana	53.4%	53.2%	-0.3	32.8%	35.6%	2.8	9.6%	9.1%	-0.5
Iowa	54.8%	53.4%	-1.4	36.1%	30.4%	-5.7 *	9.6%	10.7%	1.1
Kansas	50.6%	49.7%	-0.9	33.0%	36.2%	3.2	7.2%	6.2%	-1.0
Kentucky	62.3%	63.3%	1.0	46.8%	45.6%	-1.1	11.7%	13.1%	1.4
Louisiana	71.0%	71.0%	0.0	48.6%	50.9%	2.3	13.3%	14.6%	1.4
Maine	56.1%	59.1%	3.0	35.1%	32.6%	-2.4	12.1%	13.2%	1.0
Maryland	60.2%	63.7%	3.6	39.1%	35.1%	-4.0	8.7%	8.4%	-0.3
Massachusetts	70.3%	67.7%	-2.6	41.9%	40.6%	-1.3	9.7%	8.3%	-1.4
Michigan	64.1%	64.4%	0.3	37.8%	37.4%	-0.4	9.0%	10.3%	1.3
Minnesota	56.6%	56.1%	-0.5	32.3%	30.7%	-1.6	8.6%	10.0%	1.3
Mississippi	73.6%	71.0%	-2.6	48.1%	48.8%	0.7	18.5%	14.2%	-4.3
Missouri	53.5%	54.1%	0.6	32.7%	36.3%	3.5	8.5%	8.7%	0.3
Montana	63.1%	60.5%	-2.6	41.8%	47.1%	5.3	18.8%	16.4%	-2.3
Nebraska	54.9%	52.2%	-2.7	31.5%	30.5%	-1.0	6.6%	4.7%	-1.9
Nevada	50.8%	48.1%	-2.7	30.2%	29.5%	-0.7	9.4%	11.0%	1.6
New Hampshire	57.7%	62.2%	4.4	28.7%	35.6%	6.9	11.9%	9.2%	-2.7
New Jersey	59.9%	58.1%	-1.8	37.1%	40.2%	3.1	9.9%	10.0%	0.1
New Mexico	75.9%	73.6%	-2.3	55.9%	55.6%	-0.3	17.1%	20.5%	3.4
New York	67.0%	66.4%	-0.6	42.3%	42.9%	0.6	14.3%	14.2%	-0.1
North Carolina	70.1%	68.8%	-1.4	44.7%	45.6%	0.9	10.7%	12.0%	1.3
North Dakota	41.3%	42.3%	1.0	20.0%	25.4%	5.4	6.4%	2.1% <sup>^</sup>	-4.3 *
Ohio	59.4%	56.6%	-2.9	38.5%	38.4%	-0.1	7.3%	8.5%	1.2
Oklahoma	64.4%	61.5%	-2.9	42.6%	40.6%	-2.0	11.9%	15.1%	3.3
Oregon	65.2%	67.0%	1.8	39.0%	39.9%	0.9	13.1%	13.1%	0.0
Pennsylvania	54.2%	54.8%	0.6	39.8%	37.7%	-2.1	11.1%	9.6%	-1.5
Rhode Island	55.9%	62.4%	6.4	39.3%	39.8%	0.5	8.8%	8.1%	-0.7
South Carolina	66.6%	66.7%	0.1	45.1%	42.8%	-2.3	13.0%	11.3%	-1.7
South Dakota	50.8%	51.9%	1.0	32.7%	30.5%	-2.2	7.0%	7.1%	0.2
Tennessee	64.4%	60.3%	-4.2 *	38.2%	42.5%	4.3 *	11.1%	11.1%	0.0
Texas	61.7%	61.1%	-0.6	37.4%	34.8%	-2.6 *	10.1%	10.3%	0.2
Utah	37.8%	38.3%	0.5	17.7%	18.7%	1.0	6.6%	6.4%	-0.2
Vermont	73.3%	74.2%	0.9	53.7%	59.9%	6.2	22.8%	27.4%	4.6
Virginia	54.9%	54.6%	-0.3	28.7%	31.2%	2.5	6.2%	6.4%	0.2
Washington	66.5%	66.3%	-0.2	39.3%	38.5%	-0.8	13.0%	12.5%	-0.5
West Virginia	68.0%	67.8%	-0.2	45.4%	44.0%	-1.5	13.6%	10.7%	-2.9
Wisconsin	49.6%	53.0%	3.3	33.2%	29.4%	-3.8	7.1%	7.2%	0.1
Wyoming	34.9%	46.8%	11.9	19.1%	24.2%	5.0	11.1%	5.8%	-5.3
United States	63.6%	62.9%	-0.7 *	39.2%	39.3%	0.1	11.0%	11.1%	0.1

**Notes:** Significant difference between periods is indicated by \* (95% confidence level). Tables may not add up precisely due to rounding. Estimates with relative standard errors greater than 30% are indicated by ^. Please see the methods section for variable definitions.

**Source:** American Community Surveys as analyzed by SHADAC.

## Uninsured Children by Parental Education, 2016 to 2017

State	High school or less			Some college			Bachelor's degree or higher		
	2016	2017	Point Change	2016	2017	Point Change	2016	2017	Point Change
Alabama	3.9%	4.4%	0.5	2.4%	3.0%	0.7	1.5%	1.9%	0.4
Alaska	19.5%	12.9%	-6.6	12.1%	12.6%	0.5	3.3%	4.1% <sup>^</sup>	0.8
Arizona	12.3%	12.9%	0.7	6.7%	6.7%	0.0	3.9%	4.8%	0.9
Arkansas	5.5%	7.1%	1.6	4.2%	4.6%	0.4	1.4%	2.3%	0.9
California	4.9%	4.4%	-0.5	3.0%	3.2%	0.2	1.5%	1.8%	0.3
Colorado	9.3%	7.0%	-2.3	3.9%	4.9%	0.9	2.0%	2.4%	0.4
Connecticut	3.5%	7.2%	3.7 *	3.1%	2.2%	-0.8	1.7%	1.9%	0.2
Delaware	6.6%	5.0%	-1.6	3.2% <sup>^</sup>	3.6% <sup>^</sup>	0.4	2.1% <sup>^</sup>	1.5% <sup>^</sup>	-0.5
D.C.	4.6% <sup>^</sup>	0.4% <sup>^</sup>	-4.2	6.0% <sup>^</sup>	1.7% <sup>^</sup>	-4.3	1.0% <sup>^</sup>	2.0% <sup>^</sup>	1.0
Florida	9.6%	10.0%	0.4	6.4%	7.1%	0.7	4.1%	5.0%	0.9 *
Georgia	10.5%	11.5%	1.0	6.9%	7.2%	0.3	3.3%	3.4%	0.1
Hawaii	2.6% <sup>^</sup>	3.9% <sup>^</sup>	1.4	2.4%	1.9% <sup>^</sup>	-0.4	1.9% <sup>^</sup>	1.8% <sup>^</sup>	-0.1
Idaho	8.5%	6.5%	-2.0	6.0%	6.1%	0.2	3.6%	3.1%	-0.4
Illinois	3.9%	4.3%	0.4	2.2%	3.3%	1.0 *	1.9%	1.8%	-0.1
Indiana	12.0%	12.7%	0.7	3.9%	5.4%	1.5	2.3%	2.2%	-0.2
Iowa	6.5%	6.3%	-0.1	1.2%	2.0%	0.8	0.9% <sup>^</sup>	1.4% <sup>^</sup>	0.6
Kansas	9.4%	8.9%	-0.5	4.7%	4.6%	-0.1	2.0%	3.5%	1.4
Kentucky	7.1%	8.8%	1.7	2.4%	2.9%	0.5	1.1%	1.5%	0.4
Louisiana	5.1%	3.5%	-1.6	3.6%	3.2%	-0.4	2.0%	2.0%	0.1
Maine	9.6%	7.9%	-1.7	5.0%	5.9%	1.0	3.3% <sup>^</sup>	1.6% <sup>^</sup>	-1.7
Maryland	6.7%	7.9%	1.2	3.1%	3.9%	0.8	1.8%	2.1%	0.3
Massachusetts	1.6%	1.6%	0.0	1.1%	2.3%	1.2	0.7%	0.7%	0.0
Michigan	5.3%	5.1%	-0.2	3.0%	3.0%	0.0	1.5%	1.6%	0.1
Minnesota	7.1%	6.6%	-0.4	3.0%	3.6%	0.6	1.6%	1.7%	0.1
Mississippi	7.0%	5.9%	-1.1	4.5%	5.6%	1.2	1.8%	3.2%	1.4
Missouri	8.4%	8.5%	0.1	5.6%	4.4%	-1.2	2.1%	2.5%	0.4
Montana	5.5% <sup>^</sup>	11.3%	5.9	4.2%	7.9% <sup>^</sup>	3.7	4.0%	3.5%	-0.5
Nebraska	11.3%	10.9%	-0.3	5.6%	6.6%	1.0	1.9%	2.1%	0.2
Nevada	10.3%	10.7%	0.4	5.5%	6.2%	0.7	1.9%	4.4%	2.5 *
New Hampshire	4.8% <sup>^</sup>	2.5% <sup>^</sup>	-2.3	4.5% <sup>^</sup>	4.6% <sup>^</sup>	0.1	1.6% <sup>^</sup>	1.2% <sup>^</sup>	-0.5
New Jersey	6.1%	6.5%	0.4	3.1%	3.2%	0.1	1.8%	2.3%	0.4
New Mexico	8.3%	5.3%	-3.0	5.4%	4.4%	-1.0	2.5% <sup>^</sup>	3.8%	1.2
New York	4.1%	4.4%	0.3	2.2%	2.5%	0.3	1.6%	1.7%	0.0
North Carolina	7.1%	9.4%	2.3 *	4.5%	4.1%	-0.4	2.8%	2.6%	-0.1
North Dakota	15.9% <sup>^</sup>	5.4% <sup>^</sup>	-10.5 *	12.9%	10.0%	-2.9	4.6% <sup>^</sup>	4.7% <sup>^</sup>	0.1
Ohio	6.9%	8.2%	1.4	3.3%	3.6%	0.3	1.5%	1.7%	0.2
Oklahoma	9.2%	9.1%	-0.1	7.9%	9.2%	1.3	5.1%	4.1%	-1.0
Oregon	5.6%	4.5%	-1.1	3.6%	3.9%	0.3	1.5%	2.0%	0.6
Pennsylvania	10.5%	11.4%	0.9	3.3%	2.7%	-0.6	1.5%	1.5%	0.0
Rhode Island	2.1% <sup>^</sup>	3.5% <sup>^</sup>	1.4	1.6% <sup>^</sup>	1.8% <sup>^</sup>	0.2	1.1% <sup>^</sup>	1.4% <sup>^</sup>	0.3
South Carolina	5.5%	8.6%	3.1 *	4.0%	4.9%	0.9	3.2%	2.9%	-0.3
South Dakota	6.9% <sup>^</sup>	8.3% <sup>^</sup>	1.5	6.0%	7.6%	1.6	2.3% <sup>^</sup>	4.2% <sup>^</sup>	1.9
Tennessee	6.1%	7.0%	0.9	3.0%	3.8%	0.8	2.0%	2.8%	0.8
Texas	15.1%	16.2%	1.1	9.4%	10.2%	0.8	4.2%	5.3%	1.1 *
Utah	10.6%	14.9%	4.3	6.9%	7.0%	0.1	2.4%	3.6%	1.3
Vermont	1.2% <sup>^</sup>	1.3% <sup>^</sup>	0.1	1.8% <sup>^</sup>	1.0% <sup>^</sup>	-0.8	0.6% <sup>^</sup>	1.0% <sup>^</sup>	0.3
Virginia	10.6%	9.2%	-1.4	5.9%	5.7%	-0.2	2.2%	2.2%	0.0
Washington	4.8%	4.4%	-0.5	2.0%	2.5%	0.5	1.4%	1.8%	0.3
West Virginia	2.0%	2.8%	0.8	1.8%	2.9%	1.1	1.7% <sup>^</sup>	2.1% <sup>^</sup>	0.5
Wisconsin	9.0%	9.0%	0.0	2.4%	3.6%	1.2	1.4%	1.5%	0.1
Wyoming	6.5% <sup>^</sup>	14.4%	7.9	11.4%	13.2%	1.8	3.9% <sup>^</sup>	4.1%	0.2
United States	7.9%	8.3%	0.4 *	4.5%	4.9%	0.4 *	2.2%	2.6%	0.4 *

**Notes:** Significant difference between periods is indicated by \* (95% confidence level). Tables may not add up precisely due to rounding. Estimates with relative standard errors greater than 30% are indicated by <sup>^</sup>. Please see the methods section for variable definitions.  
**Source:** American Community Surveys as analyzed by SHADAC.

# Appendix: Table 12

## State vs. National Children's Health Insurance Coverage, 2017

State	ESI Coverage			Individual Coverage			Medicaid			Uninsured		
	2017	State vs. National Difference		2017	State vs. National Difference		2017	State vs. National Difference		2017	State vs. National Difference	
Alabama	49.7%	-4.4%	†	5.0%	-0.4%		42.1%	6.7%	†	3.1%	-1.9%	†
Alaska	55.2%	1.1%		2.4% <sup>^</sup>	-3.1%	†	32.8%	-2.6%		9.7%	4.7%	†
Arizona	50.9%	-3.2%	†	5.5%	0.0%		35.6%	0.2%		7.9%	2.9%	†
Arkansas	42.4%	-11.7%	†	4.3%	-1.1%	†	48.5%	13.1%	†	4.8%	-0.2%	
California	50.3%	-3.8%	†	6.0%	0.6%	†	40.5%	5.0%	†	3.2%	-1.8%	†
Colorado	56.3%	2.2%	†	6.5%	1.1%	†	32.9%	-2.5%	†	4.3%	-0.8%	†
Connecticut	61.8%	7.7%	†	4.8%	-0.7%		30.0%	-5.4%	†	3.3%	-1.7%	†
Delaware	61.9%	7.8%	†	5.4%	-0.1%		29.3%	-6.1%	†	3.5%	-1.5%	†
D.C.	45.0%	-9.1%	†	7.8%	2.3%	†	45.8%	10.4%	†	1.4% <sup>^</sup>	-3.6%	†
Florida	44.0%	-10.1%	†	7.9%	2.5%	†	40.9%	5.5%	†	7.2%	2.2%	†
Georgia	51.9%	-2.2%	†	4.6%	-0.9%	†	36.2%	0.8%		7.3%	2.3%	†
Hawaii	65.7%	11.6%	†	3.9%	-1.6%	†	27.9%	-7.5%	†	2.5%	-2.5%	†
Idaho	53.8%	-0.3%		8.5%	3.0%	†	32.6%	-2.9%		5.2%	0.1%	
Illinois	57.4%	3.3%	†	4.5%	-1.0%	†	35.0%	-0.4%		3.0%	-2.0%	†
Indiana	57.4%	3.3%	†	4.5%	-0.9%	†	31.8%	-3.6%	†	6.3%	1.3%	†
Iowa	64.2%	10.1%	†	6.0%	0.5%		27.1%	-8.3%	†	2.7%	-2.4%	†
Kansas	60.6%	6.5%	†	6.9%	1.4%	†	27.2%	-8.3%	†	5.4%	0.4%	
Kentucky	51.1%	-3.0%	†	4.0%	-1.5%	†	40.8%	5.4%	†	4.1%	-1.0%	†
Louisiana	45.0%	-9.1%	†	4.0%	-1.5%	†	48.0%	12.6%	†	3.0%	-2.0%	†
Maine	60.5%	6.4%	†	5.6%	0.1%		29.7%	-5.7%	†	4.2%	-0.8%	
Maryland	62.4%	8.3%	†	4.2%	-1.3%	†	29.4%	-6.1%	†	4.1%	-1.0%	†
Massachusetts	63.9%	9.8%	†	4.7%	-0.7%	†	29.9%	-5.6%	†	1.5%	-3.5%	†
Michigan	58.6%	4.5%	†	4.1%	-1.4%	†	34.4%	-1.1%		3.0%	-2.0%	†
Minnesota	65.6%	11.5%	†	5.4%	-0.1%		25.6%	-9.8%	†	3.4%	-1.6%	†
Mississippi	42.6%	-11.5%	†	5.4%	-0.1%		47.0%	11.6%	†	5.0%	0.0%	
Missouri	57.8%	3.7%	†	6.6%	1.1%	†	30.8%	-4.6%	†	4.8%	-0.2%	
Montana	47.4%	-6.7%	†	9.7%	4.2%	†	36.6%	1.1%		6.4%	1.4%	
Nebraska	63.3%	9.2%	†	6.2%	0.7%		24.8%	-10.6%	†	5.7%	0.7%	
Nevada	55.6%	1.5%		4.7%	-0.8%	†	32.2%	-3.2%	†	7.5%	2.5%	†
New Hampshire	64.1%	10.0%	†	4.8%	-0.6%		28.4%	-7.0%	†	2.6%	-2.4%	†
New Jersey	62.2%	8.1%	†	5.0%	-0.4%		29.1%	-6.3%	†	3.6%	-1.4%	†
New Mexico	39.4%	-14.7%	†	3.8%	-1.7%	†	52.3%	16.8%	†	4.6%	-0.4%	
New York	52.6%	-1.5%	†	6.8%	1.3%	†	37.8%	2.4%	†	2.8%	-2.2%	†
North Carolina	50.4%	-3.7%	†	5.9%	0.4%		38.9%	3.5%	†	4.8%	-0.2%	
North Dakota	67.5%	13.4%	†	8.0%	2.5%	†	17.6%	-17.8%	†	7.0%	1.9%	
Ohio	58.7%	4.6%	†	4.2%	-1.3%	†	33.0%	-2.4%	†	4.1%	-0.9%	†
Oklahoma	47.2%	-6.9%	†	5.3%	-0.1%		39.9%	4.5%	†	7.6%	2.6%	†
Oregon	54.0%	-0.1%		6.5%	1.1%	†	36.3%	0.8%		3.2%	-1.8%	†
Pennsylvania	59.4%	5.3%	†	5.2%	-0.3%		30.9%	-4.5%	†	4.5%	-0.5%	
Rhode Island	58.2%	4.1%	†	5.1%	-0.4%		34.5%	-0.9%		2.2%	-2.8%	†
South Carolina	50.8%	-3.3%	†	4.6%	-0.9%	†	39.3%	3.8%	†	5.3%	0.3%	
South Dakota	60.3%	6.2%	†	7.7%	2.3%	†	25.8%	-9.7%	†	6.2%	1.2%	
Tennessee	52.7%	-1.4%		4.8%	-0.6%	†	38.0%	2.6%	†	4.4%	-0.6%	
Texas	48.0%	-6.1%	†	4.9%	-0.6%	†	36.5%	1.0%	†	10.7%	5.7%	†
Utah	67.7%	13.6%	†	8.5%	3.0%	†	16.9%	-18.5%	†	6.9%	1.9%	†
Vermont	48.8%	-5.3%		3.1%	-2.4%	†	46.7%	11.3%	†	1.4% <sup>^</sup>	-3.6%	†
Virginia	64.5%	10.4%	†	6.3%	0.9%	†	24.5%	-11.0%	†	4.7%	-0.3%	
Washington	57.9%	3.8%	†	5.0%	-0.5%		34.4%	-1.0%		2.7%	-2.3%	†
West Virginia	51.0%	-3.1%	†	2.9%	-2.6%	†	43.5%	8.0%	†	2.7%	-2.4%	†
Wisconsin	66.2%	12.1%	†	3.9%	-1.6%	†	26.0%	-9.5%	†	3.9%	-1.1%	†
Wyoming	60.7%	6.6%	†	5.9%	0.5%		23.3%	-12.1%	†	10.0%	5.0%	†
United States	54.1%	0.0%		5.5%	0.0%		35.4%	0.0%		5.0%	0.0%	

**Notes:** Significant difference between state and national is indicated by † (95% confidence level). Tables may not add up precisely due to rounding. Estimates with relative standard errors greater than 30% are indicated by <sup>^</sup>. Please see the methods section for variable definitions. ESI=Employer-sponsored insurance. **Source:** American Community Surveys as analyzed by SHADAC.

## State vs. National Uninsured Children by Income, 2017

State	0-138% FPG			139-400% FPG			401%+ FPG		
	2017	State vs. National Difference		2017	State vs. National Difference		2017	State vs. National Difference	
Alabama	4.1%	-2.6	†	2.7%	-3.1	†	1.9% <sup>^</sup>	-0.2	
Alaska	10.5%	3.8		11.3%	5.5	†	4.4% <sup>^</sup>	2.3	
Arizona	10.0%	3.3	†	8.8%	3.0	†	3.2%	1.1	†
Arkansas	6.2%	-0.5		4.8%	-1.0		2.1%	0.0	
California	4.2%	-2.6	†	3.5%	-2.2	†	1.6%	-0.5	†
Colorado	5.6%	-1.1		5.7%	-0.1		1.9%	-0.2	
Connecticut	4.8%	-1.9	†	3.3%	-2.5	†	2.2%	0.0	
Delaware	6.7%	-0.1		3.9% <sup>^</sup>	-1.9		0.5% <sup>^</sup>	-1.6	†
D.C.	--	--		4.8% <sup>^</sup>	-1.0		0.8% <sup>^</sup>	-1.3	†
Florida	8.7%	2.0	†	7.9%	2.1	†	3.8%	1.6	†
Georgia	10.1%	3.4	†	7.7%	1.9	†	2.8%	0.7	
Hawaii	3.1%	-3.6	†	3.1% <sup>^</sup>	-2.7	†	0.7% <sup>^</sup>	-1.5	†
Idaho	4.6%	-2.1	†	6.5%	0.7		2.3% <sup>^</sup>	0.1	
Illinois	3.9%	-2.8	†	3.9%	-1.9	†	1.1%	-1.0	†
Indiana	8.7%	2.0	†	7.0%	1.2	†	2.4%	0.2	
Iowa	4.5%	-2.2		2.7%	-3.1	†	1.2%	-1.0	†
Kansas	9.8%	3.1	†	5.2%	-0.5		1.6%	-0.6	
Kentucky	5.5%	-1.2		4.3%	-1.4	†	1.3%	-0.8	†
Louisiana	3.2%	-3.5	†	3.7%	-2.1	†	1.8%	-0.3	
Maine	5.7% <sup>^</sup>	-1.0		5.1%	-0.6		1.9% <sup>^</sup>	-0.3	
Maryland	6.8%	0.1		5.0%	-0.8		1.7%	-0.4	
Massachusetts	2.0%	-4.7	†	1.9%	-3.9	†	0.8%	-1.4	†
Michigan	3.6%	-3.1	†	3.7%	-2.1	†	1.0%	-1.2	†
Minnesota	6.2%	-0.5		3.9%	-1.9	†	1.2%	-0.9	†
Mississippi	4.4%	-2.3	†	6.9%	1.1		1.5% <sup>^</sup>	-0.7	
Missouri	7.5%	0.8		5.0%	-0.8		1.3% <sup>^</sup>	-0.8	†
Montana	9.6%	2.9		7.4%	1.6		2.7% <sup>^</sup>	0.5	
Nebraska	10.6%	3.9		5.3%	-0.5		2.0% <sup>^</sup>	-0.1	
Nevada	10.0%	3.3	†	7.5%	1.7	†	3.9%	1.8	
New Hampshire	5.3% <sup>^</sup>	-1.4		3.0%	-2.8	†	0.7% <sup>^</sup>	-1.4	†
New Jersey	6.3%	-0.4		4.5%	-1.3	†	1.6%	-0.5	†
New Mexico	5.1%	-1.6		5.0%	-0.7		2.5%	0.3	
New York	3.9%	-2.9	†	2.8%	-3.0	†	1.6%	-0.5	†
North Carolina	6.6%	-0.1		5.3%	-0.5		2.1%	-0.1	
North Dakota	16.1%	9.4	†	6.5%	0.7		3.3% <sup>^</sup>	1.2	
Ohio	4.6%	-2.1	†	5.1%	-0.7		2.1%	-0.1	
Oklahoma	7.7%	1.0		9.0%	3.3	†	4.1%	2.0	†
Oregon	3.7%	-3.0	†	3.8%	-2.0	†	2.1%	-0.1	
Pennsylvania	6.5%	-0.2		5.4%	-0.4		1.9%	-0.2	
Rhode Island	4.3% <sup>^</sup>	-2.4		2.1% <sup>^</sup>	-3.7	†	0.6% <sup>^</sup>	-1.5	†
South Carolina	7.4%	0.7		5.4%	-0.4		2.2%	0.0	
South Dakota	11.6%	4.9		6.4%	0.6		1.5% <sup>^</sup>	-0.6	
Tennessee	5.8%	-0.9		4.1%	-1.7	†	2.9%	0.8	
Texas	12.6%	5.9	†	13.0%	7.2	†	4.5%	2.3	†
Utah	11.3%	4.6	†	6.7%	0.9		3.3%	1.2	
Vermont	1.2% <sup>^</sup>	-5.5	†	2.2% <sup>^</sup>	-3.6	†	0.4% <sup>^</sup>	-1.8	†
Virginia	7.2%	0.4		5.7%	-0.1		2.1%	0.0	
Washington	4.0%	-2.7	†	2.6%	-3.2	†	1.8%	-0.4	
West Virginia	2.9%	-3.8	†	2.9%	-2.9	†	1.8% <sup>^</sup>	-0.3	
Wisconsin	6.6%	-0.1		4.4%	-1.4	†	1.5%	-0.7	†
Wyoming	16.6%	9.8	†	10.5%	4.7		3.7% <sup>^</sup>	1.6	
United States	6.7%	0.0		5.8%	0.0		2.1%	0.0	

**Notes:** Significant difference between state and national is indicated by † (95% confidence level). Tables may not add up precisely due to rounding. Estimates with relative standard errors greater than 30% are indicated by <sup>^</sup>. Estimates with no observed sample cases are indicated by --. Please see the methods section for variable definitions. FPG=Federal poverty guidelines.

**Source:** American Community Surveys as analyzed by SHADAC.

# Appendix: Table 14

## State vs. National Uninsured Children by Race/Ethnicity, 2017

State	White			Nonwhite			Hispanic		
	2017	State vs. National Difference		2017	State vs. National Difference		2017	State vs. National Difference	
Alabama	2.7%	-1.1	†	3.2%	-1.3	†	5.5%	-2.2	
Alaska	6.2%	2.3		15.1%	10.5	†	3.7% <sup>^</sup>	-4.1	†
Arizona	5.5%	1.6	†	7.9%	3.4	†	10.1%	2.3	†
Arkansas	3.2%	-0.7		5.1%	0.6		12.3%	4.5	†
California	2.4%	-1.5	†	2.6%	-1.9	†	3.8%	-4.0	†
Colorado	3.2%	-0.6	†	3.8%	-0.8		6.3%	-1.4	†
Connecticut	2.1%	-1.8	†	3.4%	-1.2		6.1%	-1.7	
Delaware	2.1% <sup>^</sup>	-1.7	†	3.2% <sup>^</sup>	-1.4		8.5% <sup>^</sup>	0.7	
D.C.	1.1% <sup>^</sup>	-2.8	†	1.7% <sup>^</sup>	-2.9	†	0.8% <sup>^</sup>	-7.0	†
Florida	6.3%	2.4	†	6.8%	2.2	†	8.9%	1.1	†
Georgia	5.0%	1.2	†	6.6%	2.0	†	16.1%	8.3	†
Hawaii	2.6% <sup>^</sup>	-1.2		2.9%	-1.6	†	0.8% <sup>^</sup>	-7.0	†
Idaho	4.0%	0.1		10.8% <sup>^</sup>	6.2		7.9%	0.1	
Illinois	2.6%	-1.3	†	2.9%	-1.6	†	4.2%	-3.6	†
Indiana	5.8%	2.0	†	6.0%	1.5		9.6%	1.8	
Iowa	2.5%	-1.4	†	3.7% <sup>^</sup>	-0.8		2.8% <sup>^</sup>	-5.0	†
Kansas	4.5%	0.6		5.7%	1.1		8.6%	0.9	
Kentucky	3.8%	-0.1		3.3%	-1.2		9.7%	1.9	
Louisiana	2.8%	-1.1	†	2.5%	-2.0	†	8.7%	1.0	
Maine	4.3%	0.5		4.5% <sup>^</sup>	-0.1		--	--	
Maryland	2.7%	-1.2	†	3.6%	-1.0	†	9.4%	1.6	
Massachusetts	1.0%	-2.8	†	2.3%	-2.2	†	1.9%	-5.9	†
Michigan	3.0%	-0.9	†	2.5%	-2.1	†	4.3%	-3.4	†
Minnesota	2.5%	-1.3	†	4.7%	0.1		7.2%	-0.5	
Mississippi	5.9%	2.1	†	3.5%	-1.1		11.6%	3.8	
Missouri	4.4%	0.5		5.8%	1.3		6.6%	-1.1	
Montana	4.7%	0.8		16.3%	11.7	†	4.0% <sup>^</sup>	-3.8	
Nebraska	4.3%	0.4		8.0% <sup>^</sup>	3.4		9.4%	1.6	
Nevada	5.4%	1.6		5.9%	1.3		10.2%	2.5	†
New Hampshire	2.7%	-1.2	†	1.8% <sup>^</sup>	-2.7	†	2.6% <sup>^</sup>	-5.2	†
New Jersey	2.2%	-1.7	†	4.0%	-0.5		5.8%	-2.0	†
New Mexico	3.7%	-0.2		10.0%	5.5	†	3.5%	-4.2	†
New York	2.8%	-1.1	†	2.6%	-1.9	†	2.9%	-4.8	†
North Carolina	3.4%	-0.5		4.2%	-0.4		11.1%	3.3	†
North Dakota	5.5%	1.7		12.1%	7.6	†	12.1% <sup>^</sup>	4.3	
Ohio	4.2%	0.3		3.4%	-1.1	†	6.2%	-1.5	
Oklahoma	4.9%	1.0		11.2%	6.7	†	10.0%	2.3	
Oregon	3.0%	-0.9	†	3.4%	-1.1		3.9%	-3.8	†
Pennsylvania	4.8%	0.9	†	3.2%	-1.3	†	5.3%	-2.5	†
Rhode Island	1.6%	-2.3	†	2.4% <sup>^</sup>	-2.2	†	3.6% <sup>^</sup>	-4.2	†
South Carolina	4.3%	0.4		5.6%	1.0		10.7%	2.9	
South Dakota	4.3%	0.5		12.8%	8.2	†	6.1% <sup>^</sup>	-1.7	
Tennessee	3.5%	-0.4		4.4%	-0.2		11.6%	3.8	†
Texas	6.9%	3.0	†	7.6%	3.1	†	14.3%	6.6	†
Utah	5.2%	1.3	†	4.1%	-0.5		15.5%	7.8	†
Vermont	1.5% <sup>^</sup>	-2.3	†	--	--		--	--	
Virginia	3.9%	0.0		3.7%	-0.9		10.6%	2.8	†
Washington	2.2%	-1.7	†	3.1%	-1.4	†	3.7%	-4.0	†
West Virginia	2.6%	-1.3	†	2.9% <sup>^</sup>	-1.6		3.0% <sup>^</sup>	-4.7	†
Wisconsin	3.8%	-0.1		3.8%	-0.8		4.9%	-2.9	†
Wyoming	7.3%	3.4	†	19.1% <sup>^</sup>	14.5	†	19.4% <sup>^</sup>	11.7	
United States	3.9%	0.0		4.6%	0.0		7.8%	0.0	

**Notes:** Significant difference between state and national is indicated by † (95% confidence level). Tables may not add up precisely due to rounding. Estimates with relative standard errors greater than 30% are indicated by <sup>^</sup>. Estimates with no observed sample cases are indicated by --. Please see the methods section for variable definitions.

**Source:** American Community Surveys as analyzed by SHADAC.

## State vs. National Uninsured Children by Parental Education, 2017

State	High school or less			Some college			Bachelor's degree or higher		
	2017	State vs. National Difference		2017	State vs. National Difference		2017	State vs. National Difference	
Alabama	4.4%	-3.9	†	3.0%	-1.8	†	1.9%	-0.7	
Alaska	12.9%	4.6		12.6%	7.7	†	4.1% <sup>^</sup>	1.5	
Arizona	12.9%	4.6	†	6.7%	1.8	†	4.8%	2.2	†
Arkansas	7.1%	-1.2		4.6%	-0.3		2.3%	-0.3	
California	4.4%	-3.8	†	3.2%	-1.6	†	1.8%	-0.8	†
Colorado	7.0%	-1.3		4.9%	0.0		2.4%	-0.2	
Connecticut	7.2%	-1.1		2.2%	-2.7	†	1.9%	-0.7	†
Delaware	5.0%	-3.3	†	3.6% <sup>^</sup>	-1.3		1.5% <sup>^</sup>	-1.0	
D.C.	0.4% <sup>^</sup>	-7.9	†	1.7% <sup>^</sup>	-3.2	†	2.0% <sup>^</sup>	-0.6	
Florida	10.0%	1.7	†	7.1%	2.2	†	5.0%	2.4	†
Georgia	11.5%	3.3	†	7.2%	2.3	†	3.4%	0.9	†
Hawaii	3.9% <sup>^</sup>	-4.4	†	1.9% <sup>^</sup>	-3.0	†	1.8% <sup>^</sup>	-0.8	
Idaho	6.5%	-1.8		6.1%	1.2		3.1%	0.5	
Illinois	4.3%	-4.0	†	3.3%	-1.6	†	1.8%	-0.8	†
Indiana	12.7%	4.4	†	5.4%	0.5		2.2%	-0.4	
Iowa	6.3%	-2.0		2.0%	-2.9	†	1.4% <sup>^</sup>	-1.2	†
Kansas	8.9%	0.6		4.6%	-0.3		3.5%	0.9	
Kentucky	8.8%	0.5		2.9%	-2.0	†	1.5%	-1.1	†
Louisiana	3.5%	-4.8	†	3.2%	-1.7	†	2.0%	-0.6	
Maine	7.9%	-0.4		5.9%	1.0		1.6% <sup>^</sup>	-1.0	
Maryland	7.9%	-0.4		3.9%	-1.0		2.1%	-0.5	
Massachusetts	1.6%	-6.7	†	2.3%	-2.6	†	0.7%	-1.9	†
Michigan	5.1%	-3.2	†	3.0%	-1.9	†	1.6%	-1.0	†
Minnesota	6.6%	-1.6		3.6%	-1.3	†	1.7%	-0.9	†
Mississippi	5.9%	-2.4	†	5.6%	0.8		3.2%	0.7	
Missouri	8.5%	0.2		4.4%	-0.5		2.5%	-0.1	
Montana	11.3%	3.1		7.9% <sup>^</sup>	3.0		3.5%	0.9	
Nebraska	10.9%	2.6		6.6%	1.7		2.1%	-0.5	
Nevada	10.7%	2.4	†	6.2%	1.3		4.4%	1.8	†
New Hampshire	2.5% <sup>^</sup>	-5.8	†	4.6% <sup>^</sup>	-0.3		1.2% <sup>^</sup>	-1.4	†
New Jersey	6.5%	-1.8	†	3.2%	-1.6	†	2.3%	-0.3	
New Mexico	5.3%	-3.0	†	4.4%	-0.5		3.8%	1.2	
New York	4.4%	-3.9	†	2.5%	-2.4	†	1.7%	-0.9	†
North Carolina	9.4%	1.1		4.1%	-0.8	†	2.6%	0.0	
North Dakota	5.4% <sup>^</sup>	-2.9		10.0%	5.1	†	4.7% <sup>^</sup>	2.1	
Ohio	8.2%	-0.1		3.6%	-1.3	†	1.7%	-0.9	†
Oklahoma	9.1%	0.8		9.2%	4.3	†	4.1%	1.5	†
Oregon	4.5%	-3.8	†	3.9%	-1.0		2.0%	-0.5	
Pennsylvania	11.4%	3.1	†	2.7%	-2.2	†	1.5%	-1.1	†
Rhode Island	3.5% <sup>^</sup>	-4.8	†	1.8% <sup>^</sup>	-3.1	†	1.4% <sup>^</sup>	-1.2	
South Carolina	8.6%	0.3		4.9%	0.0		2.9%	0.3	
South Dakota	8.3% <sup>^</sup>	0.0		7.6%	2.7		4.2% <sup>^</sup>	1.6	
Tennessee	7.0%	-1.3		3.8%	-1.1	†	2.8%	0.2	
Texas	16.2%	7.9	†	10.2%	5.3	†	5.3%	2.7	†
Utah	14.9%	6.6	†	7.0%	2.1	†	3.6%	1.1	
Vermont	1.3% <sup>^</sup>	-7.0	†	1.0% <sup>^</sup>	-3.9	†	1.0% <sup>^</sup>	-1.6	†
Virginia	9.2%	0.9		5.7%	0.8		2.2%	-0.3	
Washington	4.4%	-3.9	†	2.5%	-2.4	†	1.8%	-0.8	†
West Virginia	2.8%	-5.5	†	2.9%	-2.0	†	2.1% <sup>^</sup>	-0.5	
Wisconsin	9.0%	0.7		3.6%	-1.3	†	1.5%	-1.1	†
Wyoming	14.4%	6.1		13.2%	8.3	†	4.1%	1.5	
United States	8.3%	0.0		4.9%	0.0		2.6%	0.0	

**Notes:** Significant difference between state and national is indicated by † (95% confidence level). Tables may not add up precisely due to rounding. Estimates with relative standard errors greater than 30% are indicated by <sup>^</sup>. Please see the methods section for variable definitions.  
**Source:** American Community Surveys as analyzed by SHADAC.