



2022 Health Insurance Coverage Estimates from the American Community Survey and Current Population Survey

An Annual Conversation with the U.S. Census Bureau

Thursday, September 28, 2023 | 1:00 PM Central Time

Kathleen Call – State Health Access Data Assistance Center

Katherine Keisler-Starkey – United States Census Bureau

Sharon Stern – United States Census Bureau

Robert Hest – State Health Access Data Assistance Center

Technical Items

- Participant audio has been automatically muted and video turned off
- Submit questions using the Q&A feature at any time during the webinar
- Problems:
 - Ask for help using the chat feature
 - Send a support request to Zoom at:
<https://support.zoom.us/hc/en-us/requests/new>
- Slides can be viewed and downloaded at:
<https://www.shadac.org/publications/2023-SHADAC-Census-coverage-data-release-webinar>
- Webinar recording will be posted on SHADAC's website
 - Email notice will be sent to all registrants

Presenters



**Kathleen
T. Call**



**Robert
Hest**



**Katherine
Keisler-Starkey**



**Sharon
Stern**



Releases for the CPS and ACS

Current Population Survey (CPS) Release

- 2022 estimates were released September 12, 2023
- “[Health Insurance Coverage in the United States: 2022](#)” report released September 12, 2023
- “[Health Insurance Rates for Working-Age Adults Higher by Race, Hispanic Origin, Region](#)” blog released September 12, 2023

American Community Survey (ACS) Release

- 2022 1-year [data products](#) were released September 14, 2023
- “[Health Insurance Coverage Increased in Over Half of U.S. States in 2022](#)” blog released September 14, 2023
- 2022 1-year Public Use Microdata Sample (PUMS) File and supplemental materials to be released October 19, 2023
- 2022 5-Year data products to be released December 7, 2023

Design Differences

	CPS	ACS
Collection Period	February through April of survey year	January through December of survey year
Population	Survey of civilian non-institutionalized U.S. population	Survey of U.S. population (including group quarters)
Annual housing units interviewed	About 60,000	About 2.15 million
Geography	Nation, states	Nation, states, sub-state
Mode	Phone and in-person*	Mail, in-person, and internet*
Uninsurance: Measures available	Uninsured: All year, Part of year (since 2018), Point-in-time (since 2014)	Point-in-time
Uninsurance: Years available	1987 to 2023	2008 to 2022 [^]

* In-person (ACS & CPS) and mailing activities (ACS) were halted in March 2020. Both resumed in limited capacity in July 2020, and in-person activities resumed fully in September 2020 while mailing activities resumed fully in April 2021.

[^] 2020 data are experimental release only

Guidance on When to Use Each Source

	CPS	ACS
Trends	✓ 1987 to 2012 2013 to 2017 2018 forward	✓ 2008 forward*
State estimates	✓	✓
Sub-state estimates	N/A	✓ 1-yr for pop > 65,000 5-yr for all geographic areas including all counties & ZIP code tabulation areas (ZCTA)
Small subpopulations	N/A	✓

* Excepting 2020 data, which were “experimental” and should not be compared to any other year

SHADAC Resources

Visit StateHealthCompare.SHADAC.org

DATA ANALYZED BY SHADAC

STATE HEALTH COMPARE

Explore Data About

< Share Email Download Data

Use **State Health Compare** to create customized reports for state-level health estimates

Explore the Data >

Explore Data

Show available breakdowns (Age, Education, Race/Ethnicity..)

- Health Insurance Coverage
 - Coverage Type
 - Workers in Establishments that Offer Coverage
- Cost of Care - Dollars
 - People with High Medical Care Cost Burden
 - Average Annual ESI Premium
 - Employee Contributions to Premiums
 - High Deductible Plans
 - Costs of Potentially Preventable Hospitalizations
 - Medicaid Expenses as Percent of State Budget
- Cost of Care - Behavior Changes
 - Adults Who Forgo Needed Medical Care
 - Made Changes to Medical Drugs
 - Trouble Paying Medical Bills
- Health Behaviors
 - Adult Binge Drinking
 - Adult Obesity
 - Adult Smoking
 - High School Obesity
 - High School Smoking
 - High School Physical Activity
 - Sales of Opioid Painkillers
 - Opioid-Related Drug Poisoning Deaths
- Outcomes
 - Chronic Disease Prevalence
 - Activities Limited due to Health Difficulty
 - Cancer Incidence
 - Health Status
 - Premature Death
- Access to Care
 - Adults with No Personal Doctor
 - No Trouble Finding Doctor
 - Told that Provider Accepts Insurance
 - Had Usual Source of Medical Care
- Utilization of Care
 - Had General Doctor or Provider Visit
 - Had Emergency Department Visit
 - Spent the Night in a Hospital
- Quality of Care
 - Adult Cancer Screenings
 - Adult Potentially Preventable Hospitalizations
 - Child Potentially Preventable Hospitalizations
 - Child Vaccinations
- Public Health
 - Weight Assessment in Schools
 - School Nutrition Standards Stronger than USDA
 - Schools Required to Provide Physical Activity
 - Smoke Free Campuses
 - Cigarette Tax Rates
 - Public Health Funding
- Social and Economic Factors
 - Children Considered to be Poor
 - Unemployment Rate
 - Income Inequality
 - Unaffordable Rent



ACCESS state-level estimates related to the Culture of Health and health care



DOWNLOAD customized reports and select data as an Excel file



GENERATE detailed graphics, trend lines, maps, bar charts, and data tables



SUBSCRIBE to SHADAC's newsletter for updates on new resources and data releases



FOLLOW us on Twitter @SHADAC or on LinkedIn

SHADAC's State Health Compare

48 state-level measures,
organized topically in
categories of:

- Health Insurance Coverage
- Cost of Care
- Health Behaviors
- Outcomes
- Access to Care
- Utilization of Care
- Quality of Care
- Public Health
- Social and Economic Factors

Explore Data

Show available breakdowns (Age, Education, Race/Ethnicity...)

Health Insurance Coverage	Access to Care
Coverage Type	Adults with No Personal Doctor
Coverage Type (2020)	Had Usual Source of Medical Care
Workers in Establishments that Offer Coverage	Broadband Internet Access
Cost of Care - Dollars	Physicians Who Accept New Patients
People with High Medical Care Cost Burden	Physicians Who Accept New Medicaid Patients
Costs of Potentially Preventable Hospitalizations	Utilization of Care
Medical Out-of-Pocket Spending	Had Dental Visit
Average Annual ESI Premium	Had Emergency Department Visit
Average Annual ESI Deductible	Had General Doctor or Provider Visit
Employee Contributions to Premiums	Had Telehealth Visit
High-Deductible Health Plans	Quality of Care
Medicaid Expenses as Percent of State Budget	Adult Cancer Screenings
Cost of Care - Behavior Changes	Adult Potentially Preventable Hospitalizations
Adults Who Forgo Needed Medical Care	Child Potentially Preventable Hospitalizations
Trouble Paying Medical Bills	Public Health
Made Changes to Medical Drugs	Public Health Funding
Health Behaviors	Child Vaccinations
Adult Binge Drinking	Adult Flu Vaccinations
Adult Smoking	Social and Economic Factors
Adult E-Cigarette Use	Child Poverty
Sales of Opioid Painkillers	Unemployment Rate
Opioid-Related and Other Drug Poisoning Deaths	Income Inequality
Alcohol-Involved Deaths	Unaffordable Rents
High School Smoking	Adverse Childhood Experiences
Outcomes	
Chronic Disease Prevalence	
Activities Limited due to Health Difficulty	
Health Status	
Cancer Incidence	
Premature Death	
Adult Unhealthy Days	
Suicide Deaths	

SHADAC's State Health Compare

17 data sources including:

- American Community Survey (ACS)
- Current Population Survey (CPS)
- Behavioral Risk Factor Surveillance System (BRFSS)
- National Health Interview Survey (NHIS)
- National Survey for Children's Health (NSCH)
- Healthcare Cost and Utilization Project (HCUP)
- National Electronic Health Records Survey (NEHRS)



SHADAC's State Health Compare



Access policy-relevant breakdowns available for most measures



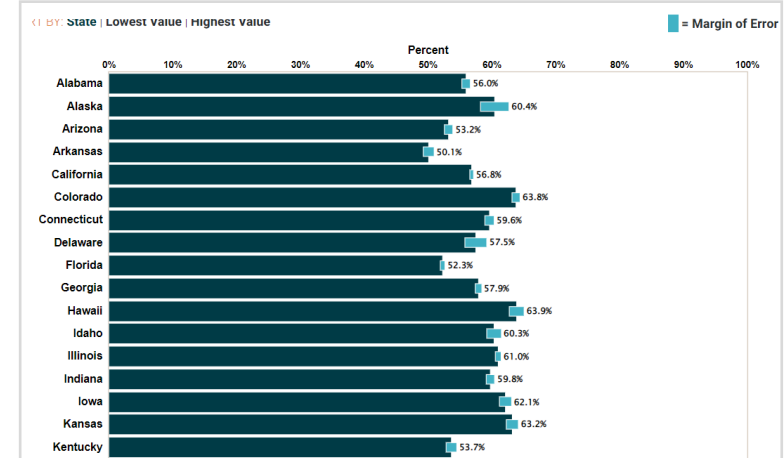
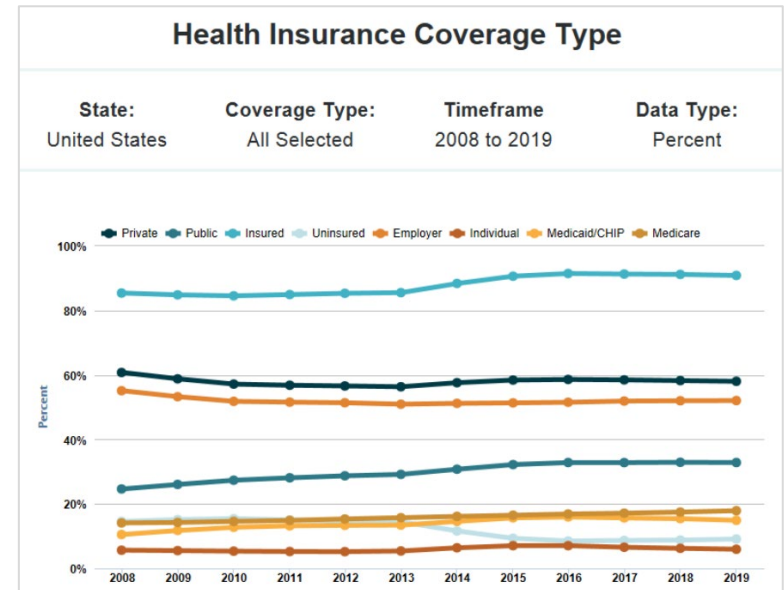
Generate tables, maps, bar charts, trends, and state rankings



Margins of error in addition to point estimates allows for [significance testing](#)*



Data can be downloaded in spreadsheet format



*Hest, Robert. (March 2023). *Significance Testing Using State Health Compare*. SHADAC. Available at: <https://www.shadac.org/publications/sig-testing-SHC>

Health Insurance Coverage Estimates on SHADAC's State Health Compare

- State Health Compare's "[Health Insurance Coverage Type](#)" measure will be updated in December 2023
 - Uses data from the ACS to produce state-level estimates of health insurance coverage for multiple types of coverage across numerous demographic categories (age, citizenship, disability status, education, family income, health status, limited English proficiency, marital status, poverty level, race/ethnicity, sex, and work status)
- COVID-related data collection/distribution disruptions resulted in 2020 ACS experimental-only data, so SHADAC produced a separate "[Health Insurance Coverage Type \(2020\)](#)" measure using data from the CPS
 - Estimates available for all states by total and for most states by subpopulation breakdown (age, poverty level, and health status)
 - SHADAC returned to using the ACS to produce state-level estimates, but the 2020-only coverage measure will remain on State Health Compare for reference

Virtual Tour

statehealthcompare.shadac.org/

Forthcoming Briefs

Comparing Federal Government Surveys 2023 (2022 data)

The cover of the brief features the SHADAC logo (State Health Access Data Assistance Center) and the Robert Wood Johnson Foundation logo. The title is 'Comparing Federal Government Surveys That Count the Uninsured: 2022', dated October 2022. The introduction discusses the importance of health insurance coverage and lists four surveys: ACS, CPS, MEPS-HC, and NHIS. It includes a table of national uninsured estimates for 2021 and 2022.

shadac
STATE HEALTH ACCESS DATA ASSISTANCE CENTER

Robert Wood Johnson Foundation

OCTOBER 2022

Comparing Federal Government Surveys That Count the Uninsured: 2022

INTRODUCTION

The ability to obtain and keep affordable and comprehensive health insurance coverage is one of the most fundamental steps to improving individual and population health through better access to and utilization of health care services. Timely and accurate estimates of the number of people who do not have health insurance, therefore, are important for understanding trends in coverage and the impacts of actions like policy changes, events like public health emergencies, or shifts in the economic landscape that may in turn affect health insurance coverage across the United States and among individual states. This brief provides an annual update to comparisons of uninsurance estimates from four federal surveys:

- The American Community Survey (ACS)
- The Current Population Survey (CPS)
- The Medical Expenditure Panel Survey – Household Component (MEPS-HC)
- The National Health Interview Survey (NHIS)

In this brief, we present current and historical national estimates of uninsurance along with the most recent available state-level estimates from these surveys. We also discuss the main reasons for variation in the estimates across the different surveys, including how these surveys and their estimates were affected by the ongoing COVID-19 pandemic and how data users should consider these impacts when considering if and when to use these data.

National Estimates

Table 1 shows the most recent available estimates of uninsurance from each of these four surveys. Some of the surveys produce estimates of the number of adults who were uninsured for an entire year, some estimate uninsurance at a specific point in time (i.e., at the time of the survey), and others collect multiple measures of uninsurance.¹

Table 1. National Uninsurance Estimates from Four Federal Surveys: Total Population

Survey	Time Period	Uninsured for the Entire Year		Uninsured at a Specific Point in Time	
		Number (Millions)	Percent of Population	Number (Millions)	Percent of Population
ACS	2021	N/A	N/A	28.2	8.6
CPS	2021	27.2	8.3	29.8	9.1
MEPS	2020	21.4	6.5	N/A	N/A
NHIS	2021	18.6	5.8	30.0	9.2

Sources: ACS estimates for civilian noninstitutionalized population from SHADAC analysis of U.S. Census Bureau, (2022). "2021 ACS 1-Year Data Tables (Table S270). Selected Characteristics of Health Insurance Coverage in the United States"; CPS entire year estimates from U.S. Census Bureau, (2022). "Health Insurance Coverage in the United States, 2021"; CPS point-in-time estimates from U.S. Census Bureau, (2022). "Health Insurance Tables, 2018-forward (Table H-12). Health Insurance Current Coverage Status and Type of Coverage by Selected Characteristics for All People, 2021"; MEPS estimates from Agency for Healthcare Research and Quality (AHRQ), (2022). "Medical Expenditure Panel Survey: Number of people in thousands by insurance coverage, all ages, United States (1996 to 2022)"; NHIS estimates from Cohen, S.A., Cha, A.B., Teitel, E.P., & Martone, M.E. (2022, May 10). "Health Insurance Coverage: Early Release of Estimates from the National Health Interview Survey, 2021" and SHADAC analysis of the 2021 NHIS Public Use Files.

¹ See Appendix for key information from each of these surveys, such as who is included in the survey, when and how the survey is conducted, response rates, and the availability of state-level insurance estimates.

² The CPS also collects point-in-time estimates, which are included in this brief for the first time. The point-in-time estimates are collected during the ongoing survey year (i.e., 2021 estimates are collected in 2021, but published along with the estimates for the previous date year (i.e., 2021 point-in-time estimates are published with entire year estimates for the 2020 data year).

State Health Access Data Assistance Center

Measuring Medicaid in Federal Government Surveys (2022 data)

The cover of the brief features the SHADAC logo and the Robert Wood Johnson Foundation logo. The title is 'Measuring Medicaid in Federal Government Surveys (2022 data)'. The content is blurred in the image.

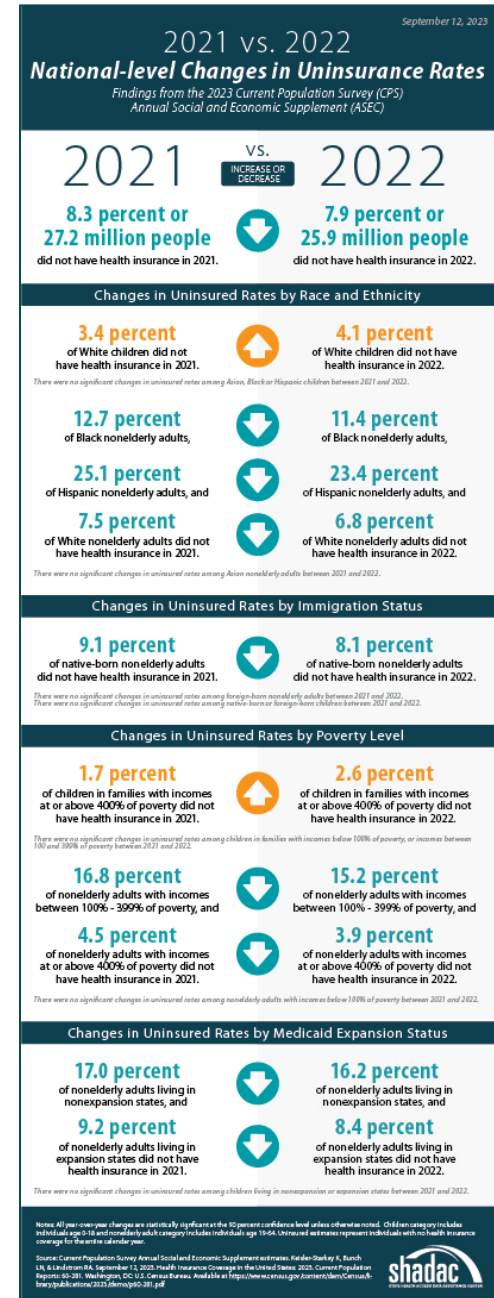
shadac
STATE HEALTH ACCESS DATA ASSISTANCE CENTER

Robert Wood Johnson Foundation

Changes in Coverage in 2022

New SHADAC Blogs and Infographic

- [CPS ASEC: 2022 National Health Insurance Coverage Estimates Show Falling Rates of Uninsurance and Direct-Purchase Coverage \(Infographic\)](#)
- [2022 ACS: Declining Uninsured Rates for the U.S. and States are Supported by Private and Public Coverage Increases](#)



MN Population Center Releases (IPUMS)

- ACS microdata is currently available through 2021; CPS ASEC microdata available through 2022 (2021 coverage estimates)
- 2022 1-year ACS and 2023 CPS ASEC microdata will be available in the coming months
- SHADAC Health Insurance Unit (HIU) and Federal Poverty Guidelines (FPG) variables for CPS and ACS are available through IPUMS
- <http://www.ipums.org>



Question & Answer



Katherine Keisler-Starkey
Sharon Stern



Robert Hest
Kathleen Call

*Please submit questions using
the Q&A feature.*

Thank you for joining us!

Please email shadac@umn.edu with any follow-up questions.

Visit our website: www.shadac.org

Follow us on LinkedIn: <https://www.linkedin.com/company/shadac/>

