



# Health Insurance Coverage Estimates from the 2021 American Community Survey and Current Population Survey

*An Annual Conversation with the U.S. Census Bureau*

Thursday, September 29, 2022 | 1:00 PM Central Time

Kathleen Call – State Health Access Data Assistance Center

Katherine Keisler-Starkey – United States Census Bureau

Laryssa Mykyta – United States Census Bureau

Robert Hest – State Health Access Data Assistance Center

# Technical Items

- Participant audio is automatically muted and video has been turned off
- Submit questions using the Q&A feature at any time during the webinar
- Problems:
  - Ask for help using the chat feature
  - Send a support request to Zoom at:  
<https://support.zoom.us/hc/en-us/requests/new>
- Slides can be downloaded at:  
<https://www.shadac.org/publications/2022-Census-Bureau-Webinar>
- Webinar recording will be posted on SHADAC's website
  - Email notice will be sent to participants

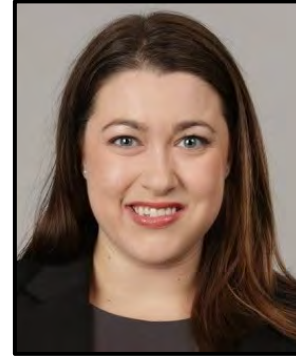
# Presenters



**Kathleen  
T. Call**



**Robert  
Hest**



**Katherine  
Keisler-Starkey**



**Laryssa  
Mykyta**



# Releases for the CPS and ACS

## Current Population Survey (CPS) Release

- 2021 estimates released September 13, 2022
- “How Has the Pandemic Continued to Affect Survey Response? Using Administrative Data to Evaluate Nonresponse in the 2022 Current Population Survey Annual Social and Economic Supplement” released September 13, 2022

## American Community Survey (ACS) Release

- 2021 1-Year data products released September 15, 2022
- “Decline in Share of People Without Health Insurance Driven by Increase in Public Coverage in 36 States” released September 15, 2022
- 2021 1-Year Public Use Microdata Sample (PUMS) File and supplemental materials to be released October 20, 2022
- 2021 5-Year data products to be released December 8, 2022

# Design Differences

	CPS	ACS
<b>Data Collection Period</b>	February through April of survey year	January through December of survey year
<b>Method</b>	Survey of civilian non-institutionalized U.S. population	Survey of U.S. population (including group quarters)
<b>Annual housing units interviewed</b>	About 60,000	About 2.15 million
<b>Geography</b>	Nation, states	Nation, states, sub-state
<b>Mode</b>	Phone and in-person*	Mail, in-person, and internet*
<b>Uninsurance: Measure</b>	Uninsured: All year, Part of year (since 2018), Point-in-time (since 2014)	Point-in-time
<b>Uninsurance: Years available</b>	1987 to 2022	2008 to 2021 <sup>^</sup>

\* *In-person (ACS & CPS) and mailing activities (ACS) were halted in March 2020. Both resumed in limited capacity in July 2020, and in-person activities resumed fully in September 2020 while mailing activities resumed fully in April 2021.*

<sup>^</sup> *2020 data are experimental release only*

# Guidance on When to Use Each Source

	CPS	ACS
<b>Trends</b>	✓ 1987 to 2012 2013 to 2017 2017 forward	✓ 2008 forward*
<b>State estimates</b>	✓	✓
<b>Sub-state estimates</b>	N/A	✓ 1-yr for pop > 65,000 5-yr for all geographic areas including all counties & ZIP code tabulation areas (ZCTA)
<b>Small subpopulations</b>	N/A	✓

\* Excepting 2020 data, which were “experimental” and should not be compared to any other year

# 2021 Health Insurance Coverage Estimates on SHADAC's State Health Compare

- In absence of 2020 ACS data, SHADAC produced our 2020 state-level health insurance coverage estimates for State Health Compare using the CPS ([statehealthcompare.shadac.org](https://statehealthcompare.shadac.org))
  - Estimates are available for all states by total and for most states by subpopulation breakdown
  - State-level subpopulation breakdowns are available by age, poverty level, and health status
- As 2021 data were able to be released as usual, SHADAC will return to using the ACS to produce state-level estimates of coverage
- The 2020-only health insurance coverage measure will remain on State Health Compare for reference for the time being

# CPS and ACS estimates



# Health Insurance Coverage in the United States: 2021



- Estimates come from the Current Population Survey (CPS ASEC)
- This year, the report only contains national estimates from the CPS. We released an ACS brief with sub-national estimates.
- CPS ASEC estimates for 2020 and 2021 reflect updated 2020 Census-based population controls

The U.S. Census Bureau reviewed this data product for unauthorized disclosure of confidential information and approved the disclosure avoidance practices applied to this release. CBDRB-FY22POP001-0126. CBDRB-FY22-355. CBDRB-FY22-370.

Note: Information on confidentiality protection, sampling error, nonsampling error, and definitions is available at [www2.census.gov/programs-surveys/cps/techdocs/cpsmar22.pdf](http://www2.census.gov/programs-surveys/cps/techdocs/cpsmar22.pdf).

Source: U.S. Census Bureau, Current Population Survey, 2022 Annual Social and Economic Supplement (CPS ASEC).

# Updated 2020 Census-Based population controls in the CPS ASEC

- Survey weights now reflect updated population information from the decennial census
- 2020 estimates in this year's reports may not match 2020 estimates in last year's report
- Replicate weight files for 2010 Census-based weights and 2020-Census based weights are both available
- Working paper SEHSD-WP2022-14: *Effects of 2020 Census-Based Population Controls on 2020 Income, Poverty, Supplemental Poverty, and Health Insurance in the United States Estimates*

# Highlights

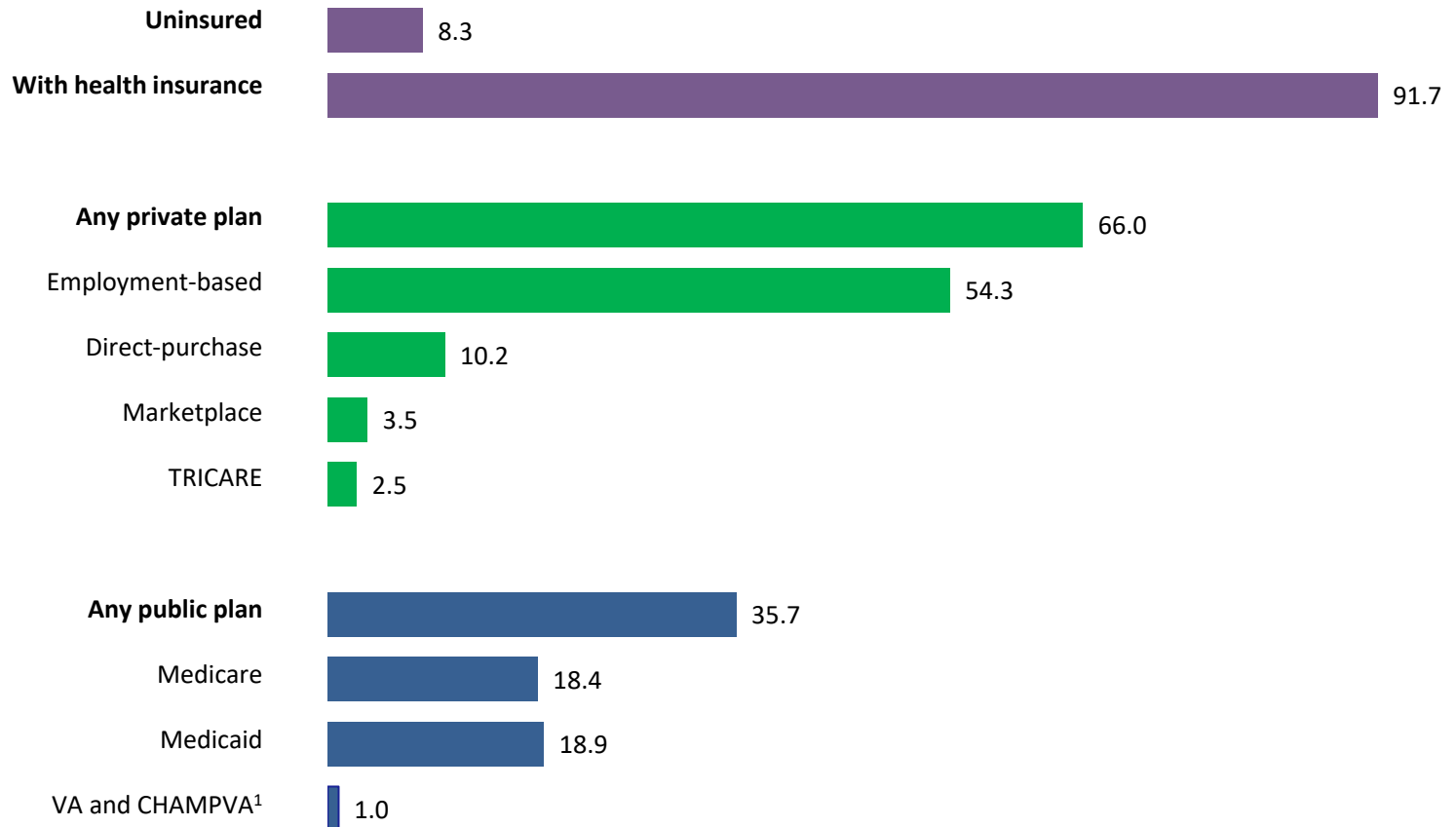


- The percentage of people without health insurance coverage for the entire calendar year was 8.3 percent, or 27.2 million people.
- Between 2020 and 2021, the uninsured rate decreased by 0.4 percentage points, and the number of uninsured decreased by about 1.1 million people.

Note: Information on confidentiality protection, sampling error, nonsampling error, and definitions is available at [www2.census.gov/programs-surveys/cps/techdocs/cpsmar22.pdf](http://www2.census.gov/programs-surveys/cps/techdocs/cpsmar22.pdf).

Source: U.S. Census Bureau, Current Population Survey, 2022 Annual Social and Economic Supplement (CPS ASEC).

# Percentage of People by Type of Health Insurance Coverage: 2021

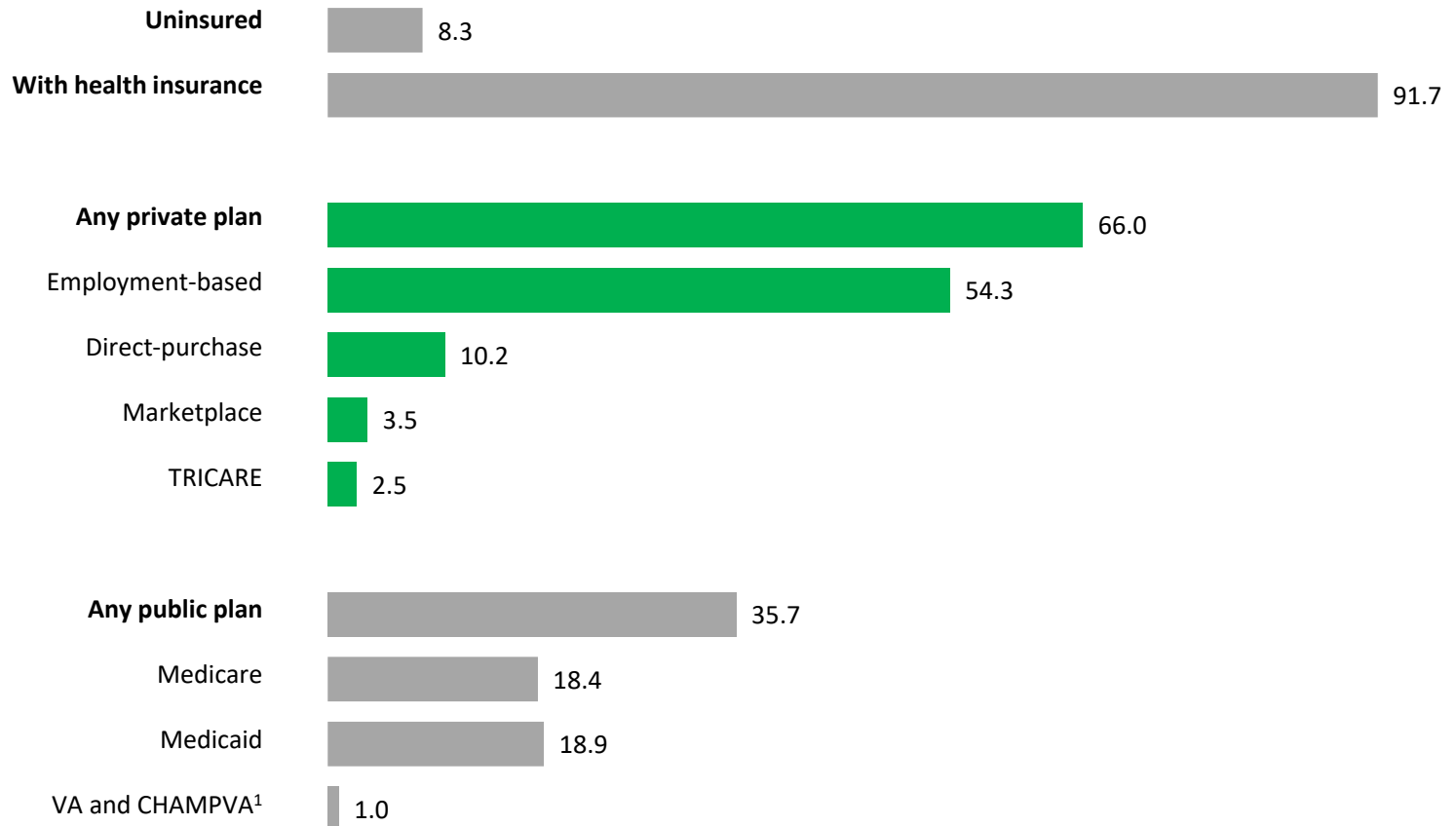


<sup>1</sup> Includes CHAMPVA (Civilian Health Medical Program of the Department of Veterans Affairs), as well as care provided by the Department of Veterans Affairs and the military.

Note: The estimates by type of coverage are not mutually exclusive; people can be covered by more than one type of health insurance during the year. Information on confidentiality protection, sampling error, nonsampling error, and definitions is available at <[www2.census.gov/programs-surveys/cps/techdocs/cpsmar22.pdf](http://www2.census.gov/programs-surveys/cps/techdocs/cpsmar22.pdf)>.

Source: U.S. Census Bureau, Current Population Survey, 2022 Annual Social and Economic Supplement (CPS ASEC).

# Percentage of People by Type of Health Insurance Coverage: 2021

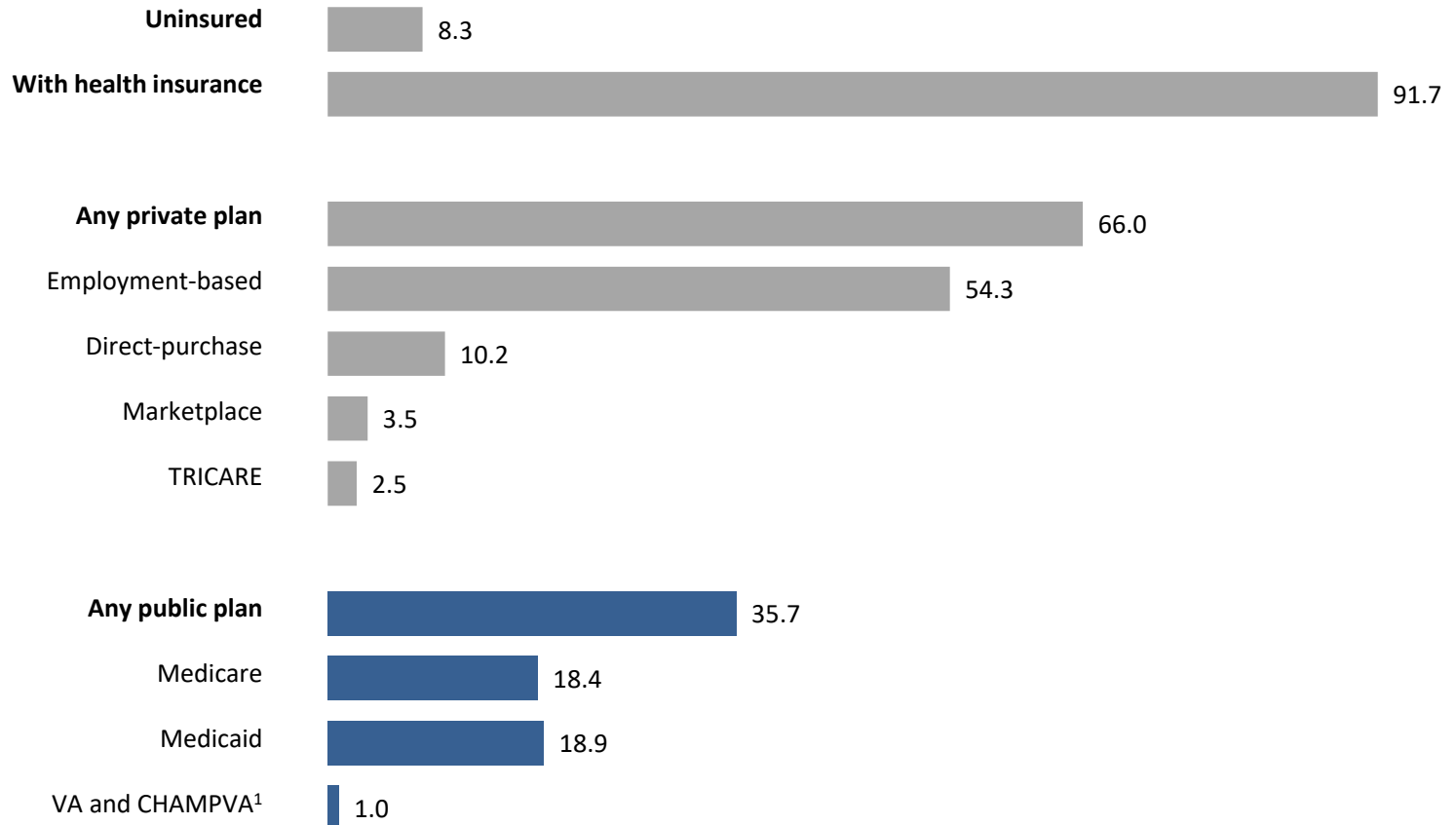


<sup>1</sup> Includes CHAMPVA (Civilian Health Medical Program of the Department of Veterans Affairs), as well as care provided by the Department of Veterans Affairs and the military.

Note: The estimates by type of coverage are not mutually exclusive; people can be covered by more than one type of health insurance during the year. Information on confidentiality protection, sampling error, nonsampling error, and definitions is available at <[www2.census.gov/programs-surveys/cps/techdocs/cpsmar22.pdf](http://www2.census.gov/programs-surveys/cps/techdocs/cpsmar22.pdf)>.

Source: U.S. Census Bureau, Current Population Survey, 2022 Annual Social and Economic Supplement (CPS ASEC).

# Percentage of People by Type of Health Insurance Coverage: 2021



<sup>1</sup> Includes CHAMPVA (Civilian Health Medical Program of the Department of Veterans Affairs), as well as care provided by the Department of Veterans Affairs and the military.

Note: The estimates by type of coverage are not mutually exclusive; people can be covered by more than one type of health insurance during the year. Information on confidentiality protection, sampling error, nonsampling error, and definitions is available at <[www2.census.gov/programs-surveys/cps/techdocs/cpsmar22.pdf](http://www2.census.gov/programs-surveys/cps/techdocs/cpsmar22.pdf)>.

Source: U.S. Census Bureau, Current Population Survey, 2022 Annual Social and Economic Supplement (CPS ASEC).

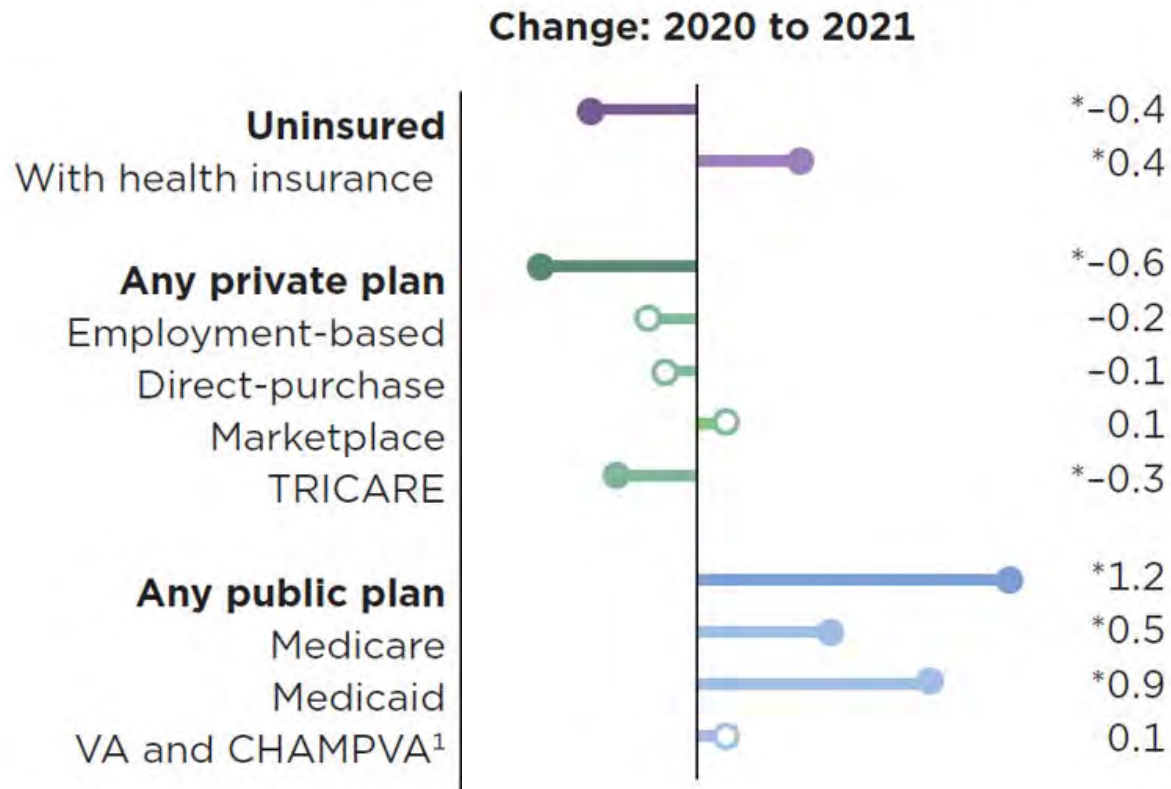
# Changes in the rate of health insurance coverage reflect:

- Economic trends
- Demographic shifts
- Policy changes, such as the Affordable Care Act (ACA)

\*Includes CHAMPVA (Civilian Health and Medical Program of the Department of Veterans Affairs), as well as care provided by the Department of Veterans Affairs and the military.  
Source: U.S. Census Bureau, Current Population Survey, 2019 Annual Social and Economic Supplement.

# Change in Percentage of People by Type of Health Insurance Coverage: 2020 to 2021

○ No statistical change between years



\*Denotes a statistically significant change between 2020 and 2021 at the 90 percent confidence level.

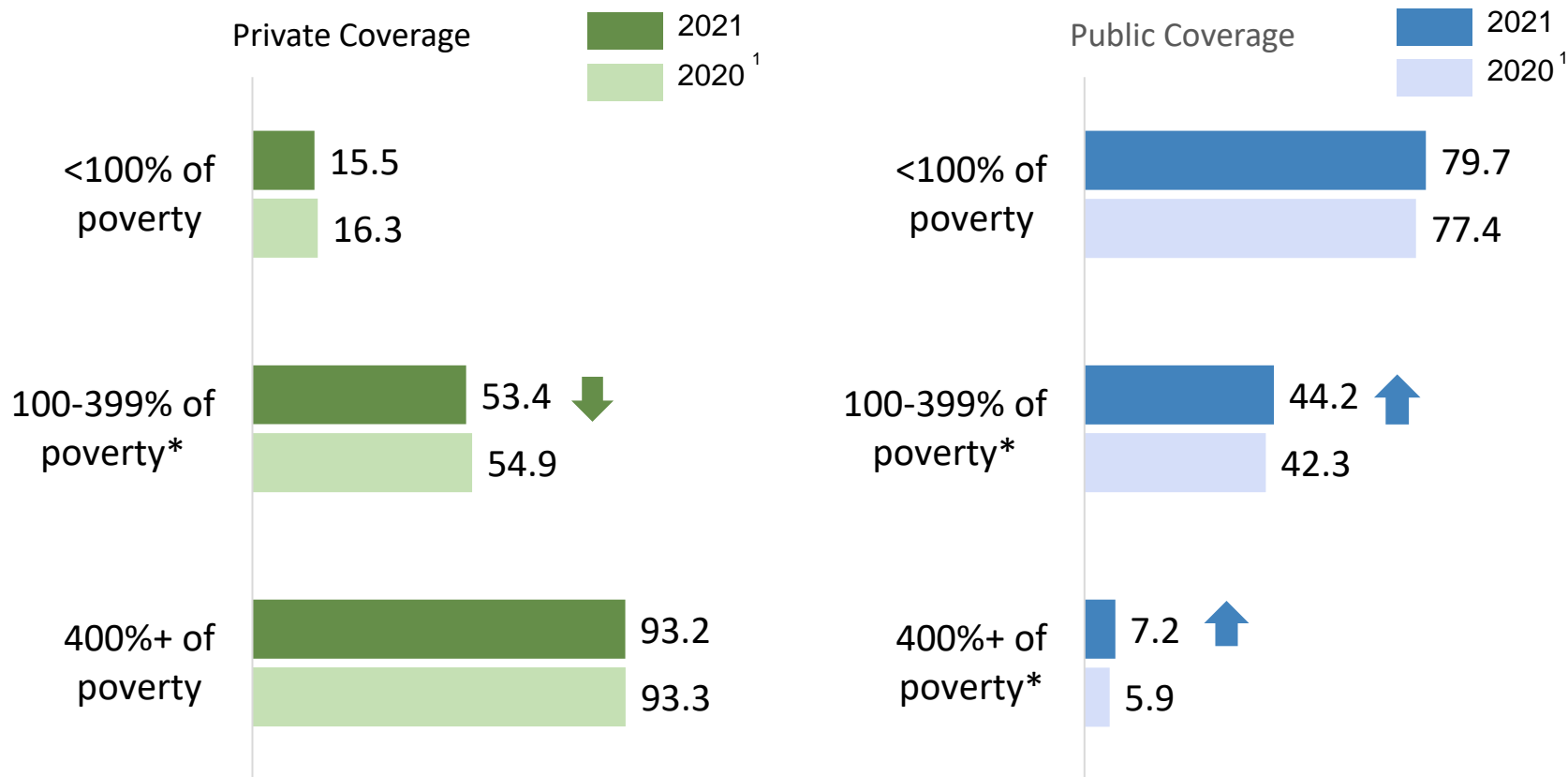
<sup>1</sup> Includes CHAMPVA (Civilian Health Medical Program of the Department of Veterans Affairs), as well as care provided by the Department of Veterans Affairs and the military.

Note: The estimates by type of coverage are not mutually exclusive; people can be covered by more than one type of health insurance during the year. Information on confidentiality protection, sampling error, nonsampling error, and definitions is available at [www2.census.gov/programs-surveys/cps/techdocs/cpsmar22.pdf](http://www2.census.gov/programs-surveys/cps/techdocs/cpsmar22.pdf).

Source: U.S. Census Bureau, Current Population Survey, 2021 and 2022 Annual Social and Economic Supplements (CPS ASEC).



# Percentage of Children Under the Age of 19 With Private and Public Coverage by IPR: 2020 to 2021



<sup>1</sup> Implementation of 2020 Census-based population controls.

\*Denotes a statistically significant difference at the 90 percent confidence level between 2020 and 2021.

Note: The estimates by type of coverage are not mutually exclusive; people can be covered by more than one type of health insurance. Population as of March of the following year. Information on confidentiality protection, sampling error, nonsampling error, and definitions is available at [www2.census.gov/programs-surveys/cps/techdocs/cpsmar22.pdf](http://www2.census.gov/programs-surveys/cps/techdocs/cpsmar22.pdf).

Source: U.S. Census Bureau, Current Population Survey, 2021 and 2022 Annual Social and Economic Supplements (CPS ASEC).

# America Counts Story: Children's Coverage



## More Children Were Covered by Medicaid and CHIP in 2021

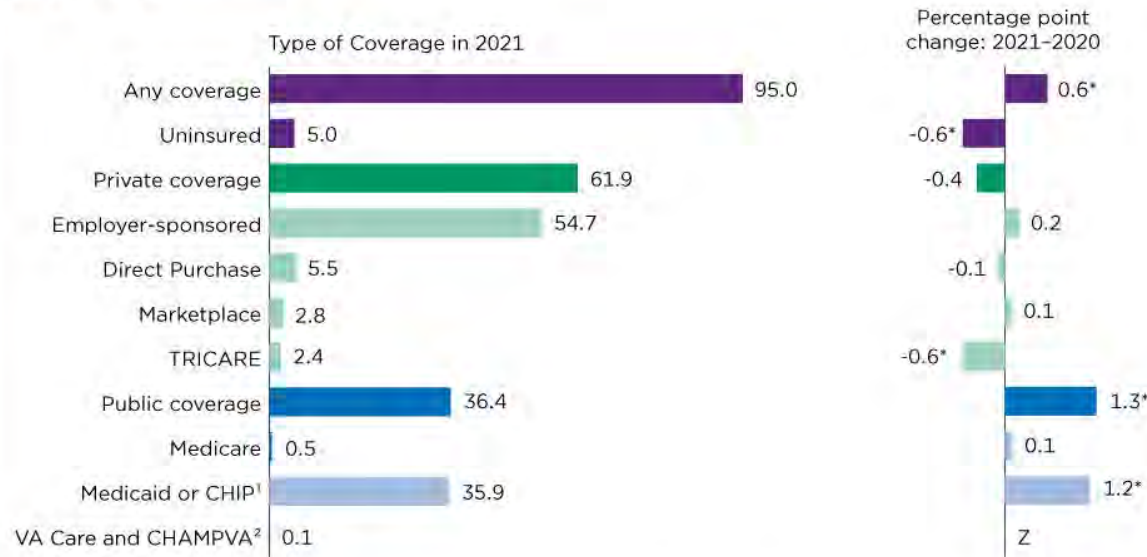
LARYSSA MYKYTA, KATHERINE KEISLER-STARKEY AND LISA BUNCH

SEPTEMBER 13, 2022



# America Counts Story: Children's Coverage

Figure 1.  
**Health Insurance Coverage Status and Type of Coverage for Children Under 19: 2020 and 2021**  
 (In percent)



\* Denotes a statistically significant change between 2020 and 2021 at the 90% confidence level.

Z Rounds to zero.

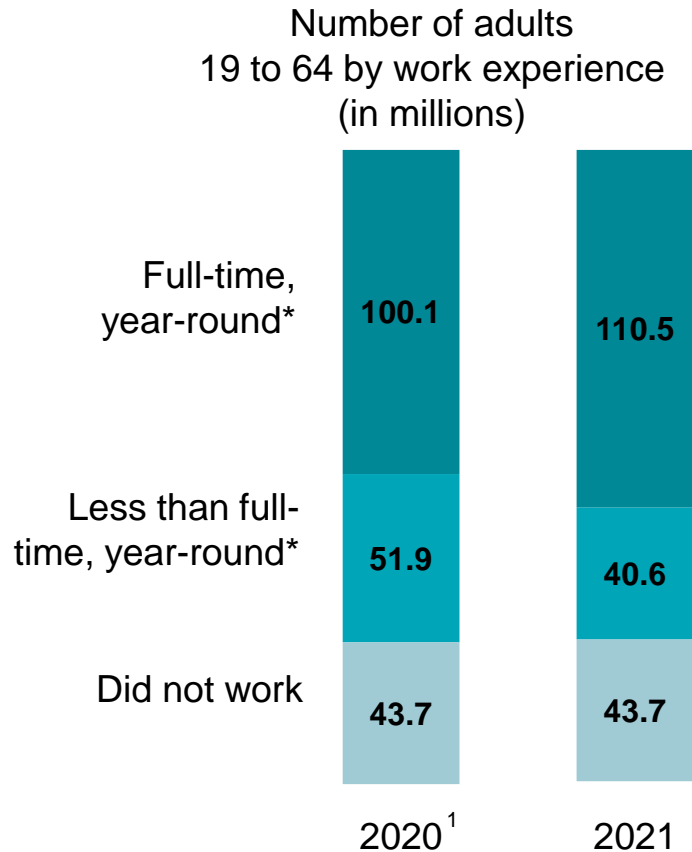
<sup>1</sup> The Children's Health Insurance Program (CHIP) provides low-cost health coverage to children in families that earn too much money to qualify for Medicaid but not enough to buy private insurance.

<sup>2</sup> Includes CHAMPVA (Civilian Health Medical Program of the Department of Veterans Affairs), as well as care provided by the Department of Veterans Affairs (VA) and the military.

Note: Population as of March of the following year. The estimates by type of coverage are not mutually exclusive, people can be covered by more than one type of health insurance in a given year. Information on confidentiality protection, sampling error, nonsampling error, and definitions is available at [www2.census.gov/programs-surveys/cps/techdocs/cpsmar22.pdf](http://www2.census.gov/programs-surveys/cps/techdocs/cpsmar22.pdf).

Source: U.S. Census Bureau, Current Population Survey, 2021 and 2022 Annual Social and Economic Supplement (CPS ASEC).

# Percentage of Adults Aged 19 to 64 by Work Experience: 2020 to 2021



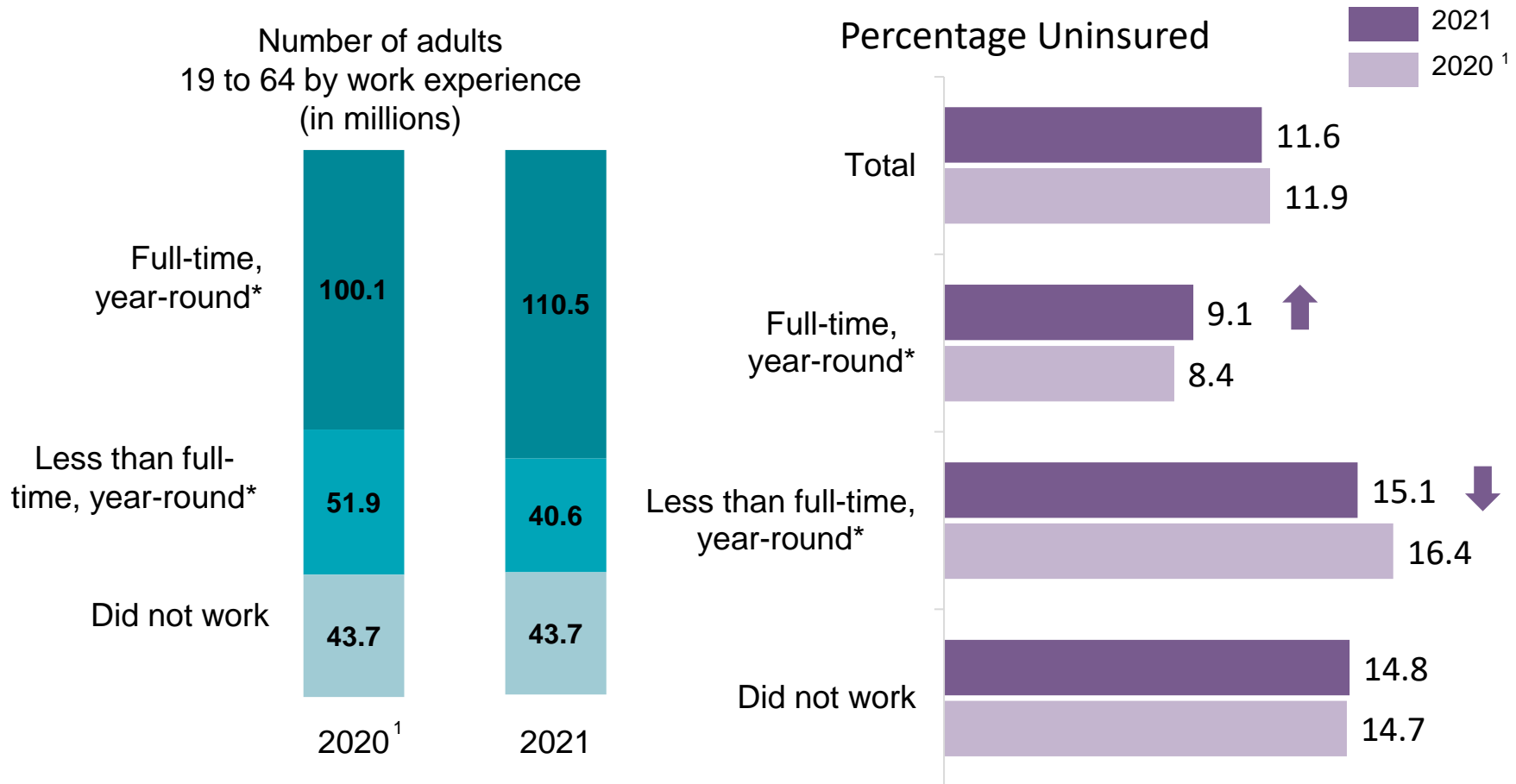
<sup>1</sup> Implementation of 2020 Census-based population controls.

\*Denotes a statistically significant difference at the 90 percent confidence level between 2020 and 2021.

Notes: Details may not sum to totals because of rounding. Number of adults rounded to nearest million. Population as of March of the following year. Information on confidentiality protection, sampling error, nonsampling error, and definitions is available at <[www2.census.gov/programs-surveys/cps/techdocs/cpsmar22.pdf](http://www2.census.gov/programs-surveys/cps/techdocs/cpsmar22.pdf)>.

Source: U.S. Census Bureau, Current Population Survey, 2021 and 2022 Annual Social and Economic Supplements (CPS ASEC).

# Percentage of Adults Aged 19 to 64 by Work Experience: 2020 to 2021



<sup>1</sup> Implementation of 2020 Census-based population controls.

\*Denotes a statistically significant difference at the 90 percent confidence level between 2020 and 2021.

Notes: Details may not sum to totals because of rounding. Number of adults rounded to nearest million. Population as of March of the following year.

Information on confidentiality protection, sampling error, nonsampling error, and definitions is available at <[www2.census.gov/programs-surveys/cps/techdocs/cpsmar22.pdf](http://www2.census.gov/programs-surveys/cps/techdocs/cpsmar22.pdf)>.

Source: U.S. Census Bureau, Current Population Survey, 2021 and 2022 Annual Social and Economic Supplements (CPS ASEC).

# America Counts Story: Worker's Coverage



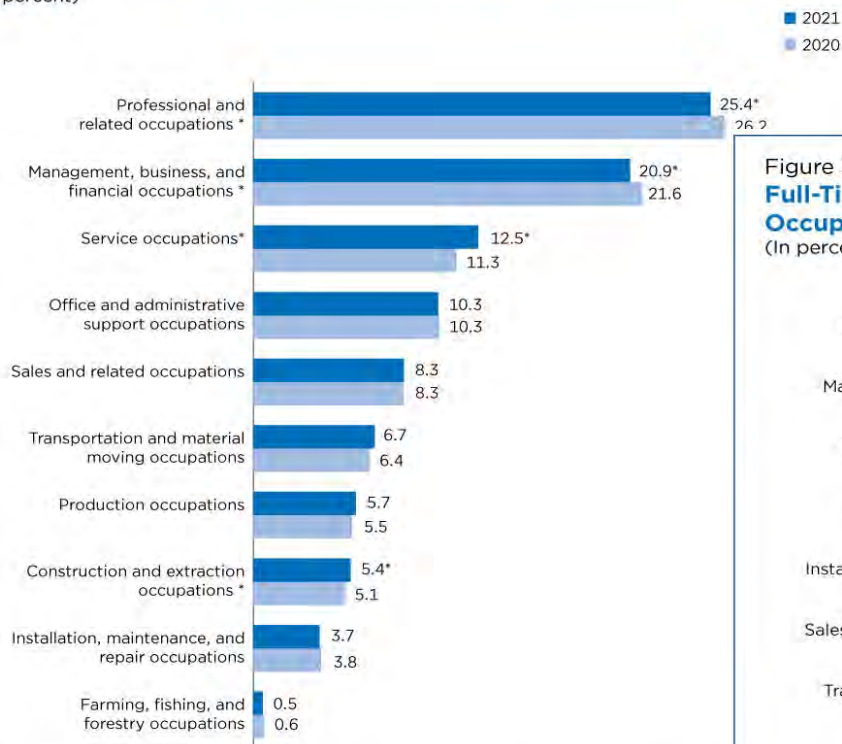
## Public Coverage Increased for All Workers, Private Coverage Declined for Full-Time, Year-Round Workers

KATHERINE KEISLER-STARKEY, LARYSSA MYKYTA AND LISA BUNCH  
SEPTEMBER 13, 2022



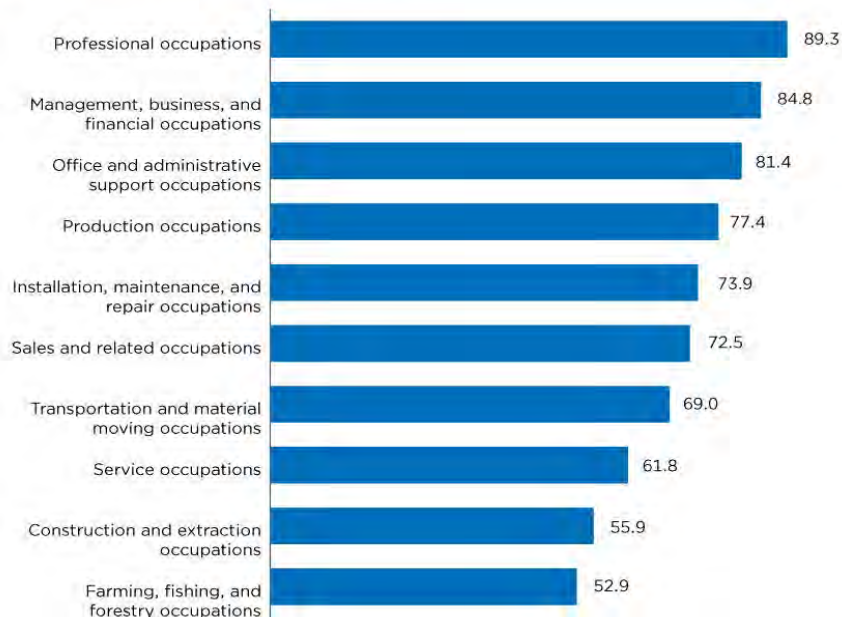
# America Counts Story: Worker's Coverage

Figure 2.  
**Total of Full-Time, Year-Round Workers in Each Occupational Category: 2020 and 2021**  
 (In percent)



\* Denotes a statistically significant change between 2020 and 2021 at the 90% confidence level.  
 Note: Population as of March of the following year. Adults ages 19 to 64. Definitions and informal confidentiality protection, sampling error, nonsampling error, and definitions are available at <https://www2.census.gov/programs-surveys/cps/techdocs/cpsmar22.pdf>.  
 Source: U.S. Census Bureau, Current Population Survey, 2021 and 2022 Annual Social and Economic Supplement (CPS ASEC).

Figure 3.  
**Full-Time, Year-Round Workers With Employer-Sponsored Insurance by Occupational Category: 2020 and 2021**  
 (In percent)



Note: Population as of March of the following year. Adults ages 19 to 64. Information on confidentiality protection, sampling error, nonsampling error, and definitions is available at <https://www2.census.gov/programs-surveys/cps/techdocs/cpsmar22.pdf>.  
 Source: U.S. Census Bureau, Current Population Survey, 2022 Annual Social and Economic Supplement (CPS ASEC).

# CPS ASEC Summary

- The percentage of people without health insurance coverage for the entire calendar year was 8.3 percent, or 27.2 million people.
- Between 2020 and 2021, the uninsured rate decreased 0.4 percentage points, and the number of uninsured decreased by about 1.1 million people.
- Rates of private coverage decreased between 2020 and 2021, while rates of public coverage increased
- The uninsured rate for children decreased by 0.6 percentage points to 5.0 percent
- Between 2020 and 2021, the uninsured rate for full-time, year-round workers increased, likely due to a change in the composition of the workforce



# 2021 1-Year ACS Release

*Updated June 29, 2022*

Planned Release	Data Products <sup>1</sup>	Lowest Level Geography <sup>2</sup>
October 20, 2022	1-Year Public Use Microdata Sample (PUMS) File	Public Use Microdata Area (PUMA)
	1-Year Supplemental Estimates Release: <ul style="list-style-type: none"><li>• Supplemental Tables</li></ul>	Places, County Subdivisions (where available) Geographies of 20,000+ population

<sup>1</sup> For information on the types of data products available, see the ACS Data Tables and Tools. This year, ACS data products will be released on the Census Bureau's new data dissemination platform at [data.census.gov](https://data.census.gov). American FactFinder will not host any of the 2018 ACS data releases. Geographic Comparison Tables and Ranking Tables will not be supported on [data.census.gov](https://data.census.gov) for the 2018 ACS release, and the Census Bureau is in the process of determining whether the new platform will support these types of tables in the future.

<sup>2</sup> The lowest level of geography refers to the Census geographic hierarchy. For more information on census geography, see the Geography Program Glossary.

<sup>3</sup> Media embargos will be available 48 hours before the public releases of the ACS 1-year estimates in September and the ACS 5-year estimates in December. To learn more about the embargos and what will be new with upcoming releases, tune into the pre-release webinars. Please check the ACS Events page for updates.

# ACS Brief: By Geography

<https://www.census.gov/library/publications/2022/acs/acsbr-013.html>

## Health Insurance Coverage Status and Type by Geography: 2019 and 2021

---

*American Community Survey Briefs*

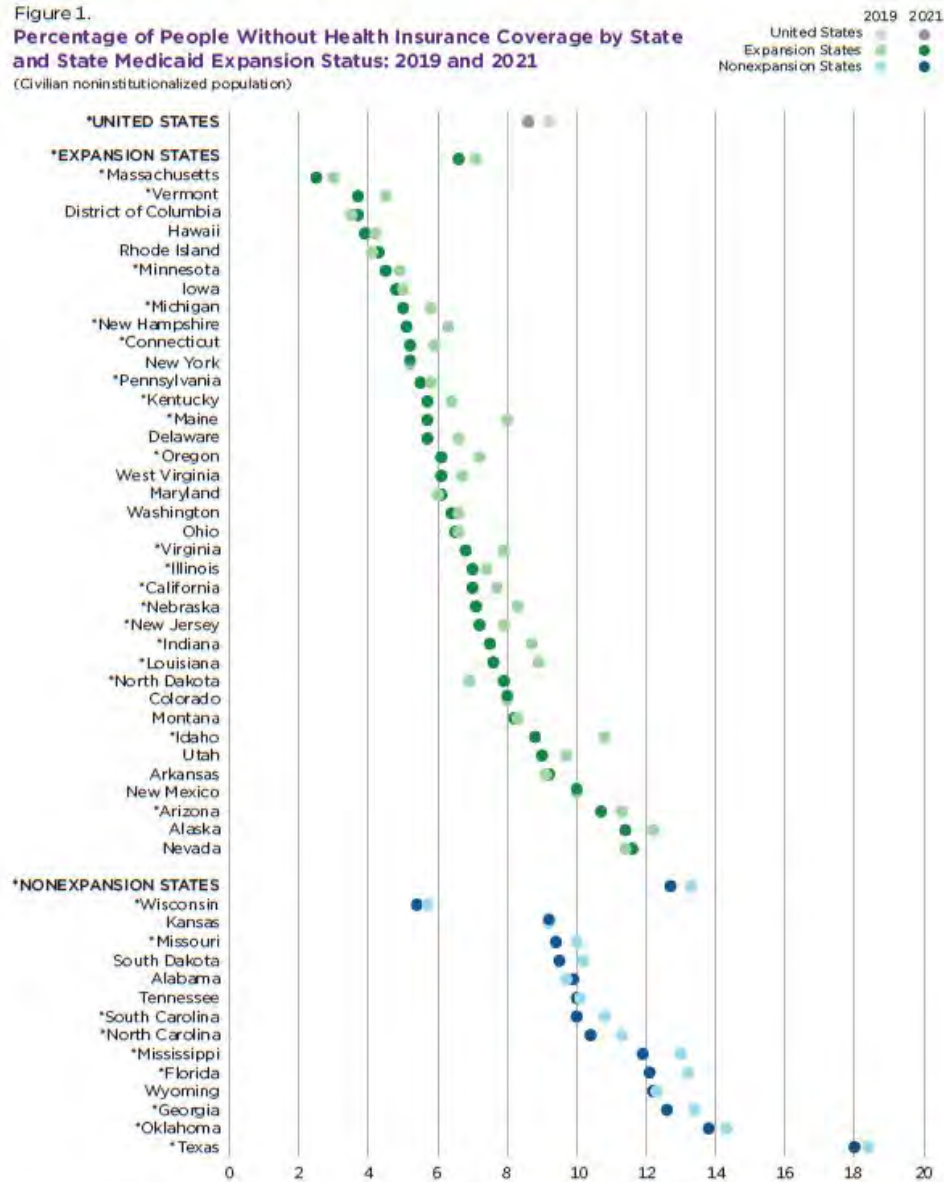
Douglas Conway and Breana Branch  
Issued September 2022  
ACSBR-013

# ACS Brief: By Geography

Figure 1.

## Percentage of People Without Health Insurance Coverage by State and State Medicaid Expansion Status: 2019 and 2021

(Civilian noninstitutionalized population)



\* Denotes a statistically significant change between 2019 and 2021 at the 90 percent confidence level.  
 Note: State Medicaid expansion status in 2021 is used to compare change between 2019 and 2021. For more information on expansion states, refer to Appendix A. For information on confidentiality protection, sampling error, nonsampling error, and definitions in the American Community Survey, refer to <[https://www2.census.gov/programs-surveys/acs/tech\\_docs/accuracy/ACS\\_Accuracy\\_of\\_Data\\_2021.pdf](https://www2.census.gov/programs-surveys/acs/tech_docs/accuracy/ACS_Accuracy_of_Data_2021.pdf)>.  
 Source: U.S. Census Bureau, 2019 and 2021 American Community Survey, 1-year estimates.

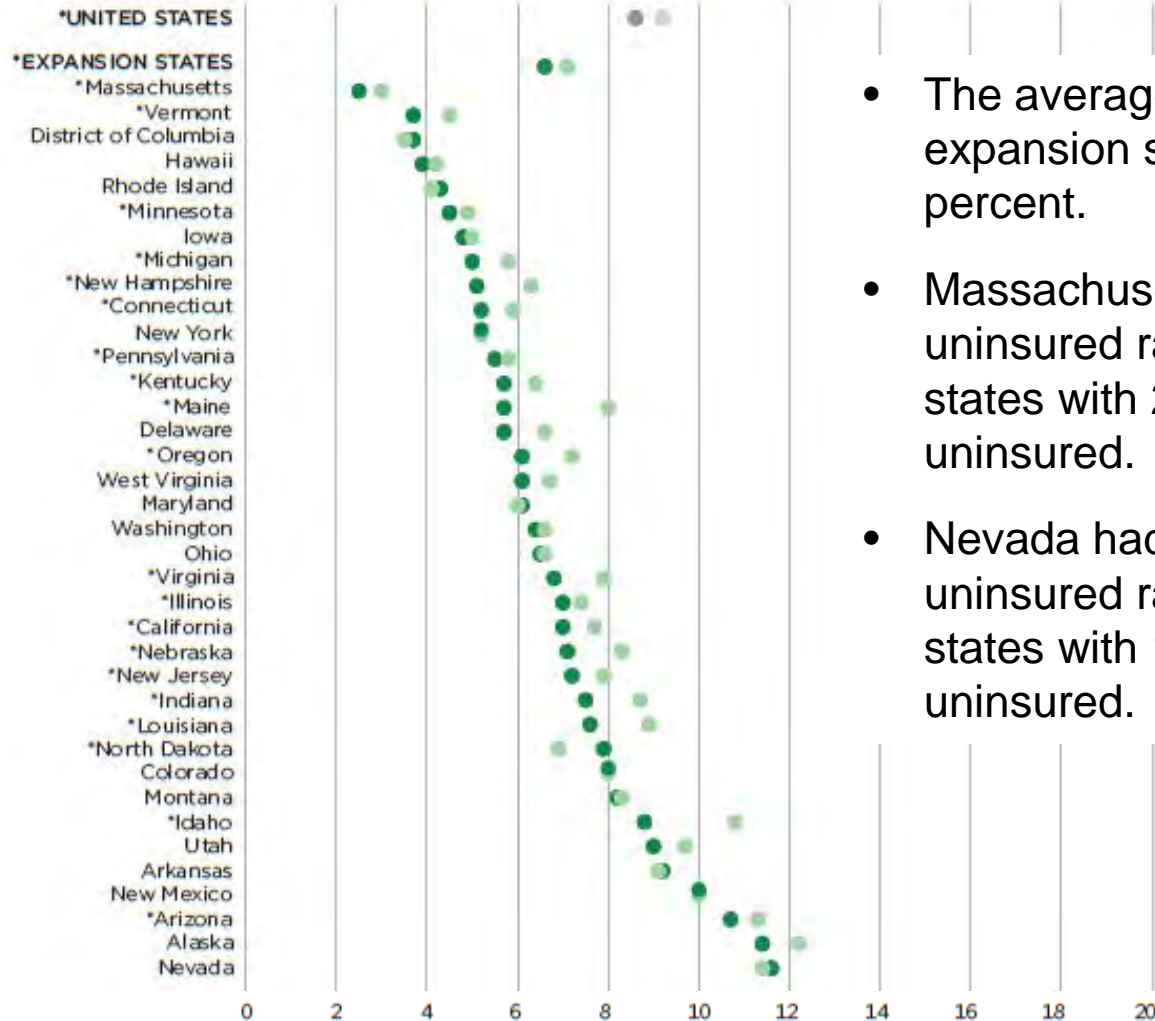
# ACS Brief: Uninsured Rate Expansion States

Figure 1.

Percentage of People Without Health Insurance Coverage by State and State Medicaid Expansion Status: 2019 and 2021

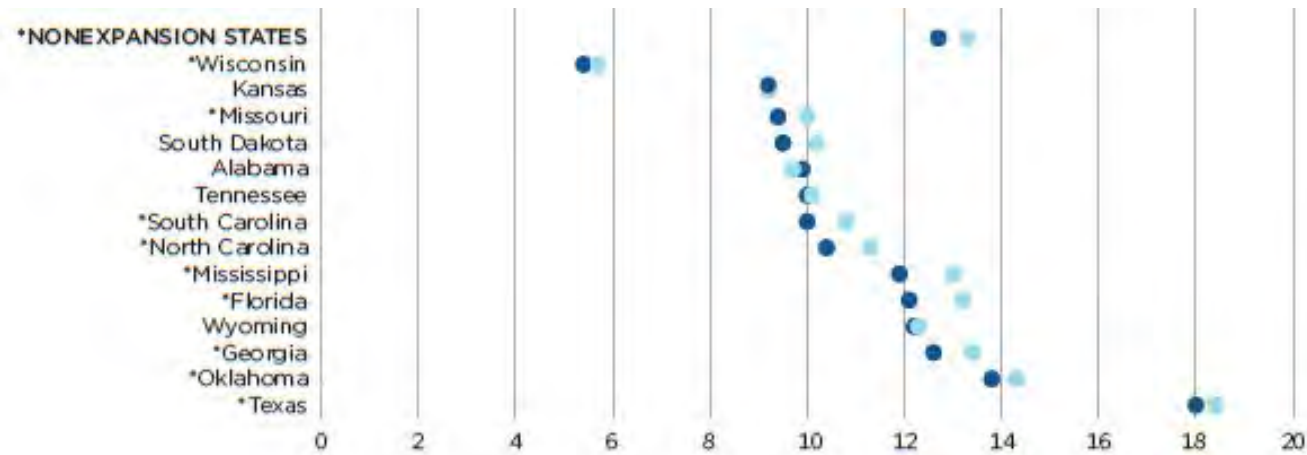
(Civilian noninstitutionalized population)

2019 2021  
 United States  
 Expansion States  
 Nonexpansion States



- The average uninsured rate for expansion states was 6.6 percent.
- Massachusetts had the lowest uninsured rate of all expansion states with 2.5 percent uninsured.
- Nevada had the highest uninsured rate of all expansion states with 11.6 percent uninsured.

# ACS Brief: Uninsured Rate Non-Expansion States



- The average uninsured rate for nonexpansion states was 12.7 percent.
- Wisconsin had the lowest uninsured rate of all nonexpansion states with 5.4 percent uninsured.
- Texas had the highest uninsured rate of all nonexpansion states with 18.0 percent uninsured.

# America Counts Story: Coverage by State



Uninsured Rate Declined in 28 States 2019-2021



## Decline in Share of People Without Health Insurance Driven by Increase in Public Coverage in 36 States

DOUGLAS CONWAY AND LARYSSA MYKYTA  
SEPTEMBER 15, 2022



# Summary of Findings and More



- In the CPS ASEC, rates of private coverage decreased between 2020 and 2021, while rates of public coverage increased.
  - In the ACS, the uninsured rate ranged from 2.5 percent in Massachusetts to 18.0 percent in Texas.
  - Between 2019 and 2021, states with the largest drops in uninsured rate: Idaho (2.0 percentage points), and Maine (2.3 percentage points).
- In the CPS ASEC the uninsured rate for all of 2021 was 8.3 percent.
  - In the ACS the annual average of the uninsured rate at the time of interview was 8.6 percent.

## Health Insurance Coverage Status and Type by Geography: 2019 and 2021

*American Community Survey Briefs*

Douglas Conway and Breanna Branch  
Issued September 2022  
ACSB-013

# For more information:

[www.census.gov/library/publications/2022/demo/p60-278.html](http://www.census.gov/library/publications/2022/demo/p60-278.html)

<https://www.census.gov/library/publications/2022/acs/acsbr-013.html>

<https://www.census.gov/library/stories.html>



## Health Insurance Coverage Status and Type by Geography: 2019 and 2021

*American Community Survey Briefs*

Douglas Conway and Breana Branch  
Issued September 2022  
ACSBR-013

// [Census.gov](https://www.census.gov) / [Library](#) / [America Counts: Stories Behind the Numbers](#)

## America Counts: Stories Behind the Numbers

We feature stories on various topics such as families, housing, employment, business, education, the economy, emergency management, and population.



# Accessing Estimates

- Supplemental release materials
- Tables on [data.census.gov](https://data.census.gov)
- Microdata

# Accessing Estimates

- **Supplemental release materials**
- Tables on [data.census.gov](https://data.census.gov)
- Microdata

# Accessing Estimates: Supplemental Release Materials on the Updated census.gov Website

Health Insurance Library: <<https://www.census.gov/topics/health/health-insurance/library.html>>

- CPS detailed and historical tables
- ACS detailed and historical tables
- Interactive data visualizations
- Publications and working papers

# Accessing Estimates: Additional Tables

## Health insurance website: detailed and historical CPS tables

Detail: <[www.census.gov/data/tables/time-series/demo/income-poverty/cps-hi/hi.html](http://www.census.gov/data/tables/time-series/demo/income-poverty/cps-hi/hi.html)>

Historical: <[www.census.gov/library/publications/2022/demo/p60-278.html](http://www.census.gov/library/publications/2022/demo/p60-278.html)>

**Table H-01. Health Insurance Coverage Status and Type of Coverage by Selected Characteristics for All People: 2021**

Information on confidentiality protection, sampling error, nonsampling error, and definitions is available at <<https://www2.census.gov/programs-surveys/cps/techdocs/cpsmar22.pdf>>.

Source: U.S. Census Bureau, Current Population Survey, 2022 Annual Social and Economic Supplement (CPS ASEC).

(Numbers in thousands, margins of error in thousands or percentage points as appropriate. People as of March of the following year)

**All Persons**

Characteristic	Total	Any health insurance				Private health insurance										
						Private total			Employment-based			Direct-purchase				
		Number	Margin of error <sup>1</sup> (±)	Percent	Margin of error <sup>1</sup> (±)	Number	Margin of error <sup>1</sup> (±)	Percent	Margin of error <sup>1</sup> (±)	Number	Margin of error <sup>1</sup> (±)	Percent	Margin of error <sup>1</sup> (±)	Number	Margin of error <sup>1</sup> (±)	Percent
Total	328,074	300,887	748	91.7	0.2	216,366	1,077	66.0	0.3	178,285	1,123	54.3	0.3	33,555	705	10.2
<b>Family Status</b>																
In families	263,127	242,912	1,095	92.3	0.2	177,408	1,268	67.4	0.4	148,318	1,266	56.4	0.4	24,939	635	9.5
Householder	84,283	78,097	513	92.7	0.3	59,746	522	70.9	0.4	48,773	512	57.9	0.5	9,683	260	11.5
Related children under 18	71,491	68,047	312	95.2	0.3	44,478	493	62.2	0.7	39,375	520	55.1	0.7	3,854	231	5.4
Related children under 6	21,566	20,510	169	95.1	0.5	13,017	255	60.4	1.1	11,533	257	53.5	1.1	1,051	115	4.9
In unrelated subfamilies	1,024	864	120	84.3	4.5	474	85	46.3	6.6	418	81	40.9	6.6	53	23	5.2
Unrelated individuals	63,923	57,111	877	89.3	0.5	38,483	732	60.2	0.7	29,549	636	46.2	0.7	8,562	297	13.4
<b>Race<sup>3</sup> and Hispanic Origin</b>																
White	248,776	228,342	612	91.8	0.2	168,728	974	67.8	0.4	137,817	964	55.4	0.4	27,547	668	11.1
White, not Hispanic	194,186	184,086	458	94.8	0.2	142,217	882	73.2	0.4	115,995	892	59.7	0.5	23,249	580	12.0
Black	43,963	40,004	273	91.0	0.6	24,233	510	55.1	1.2	20,478	505	46.6	1.2	2,936	214	6.7
Asian	20,681	19,407	234	93.8	0.7	14,971	310	72.4	1.4	12,719	307	61.5	1.4	2,231	173	10.8
Hispanic (any race)	62,515	51,104	403	81.7	0.6	30,489	538	48.8	0.9	25,240	542	40.4	0.9	4,753	284	7.6
<b>Age</b>																
Under 65 years	271,881	245,349	732	90.2	0.3	188,988	997	69.5	0.4	164,601	1,088	60.5	0.4	21,266	630	7.8
Under 19 years <sup>4</sup>	77,026	73,140	296	95.0	0.3	47,643	506	61.9	0.6	42,113	535	54.7	0.7	4,232	242	5.5
Under 3 years <sup>5</sup>	10,221	9,636	132	94.3	0.7	6,013	169	58.8	1.4	5,280	161	51.7	1.4	491	73	4.8
3 to 5 years	11,668	11,148	141	95.5	0.6	7,071	178	60.6	1.3	6,296	180	54.0	1.4	583	69	5.0
6 to 11 years	24,440	23,333	126	95.5	0.4	15,023	231	61.5	0.9	13,291	243	54.4	1.0	1,300	118	5.3
12 to 18 years	30,696	29,022	184	94.5	0.4	19,536	251	63.6	0.8	17,246	262	56.2	0.8	1,858	146	6.1
19 to 64 years	194,855	172,209	600	88.4	0.3	141,344	710	72.5	0.4	122,488	805	62.9	0.4	17,034	505	8.7

# Accessing Estimates: Additional Tables

## Health insurance website: detailed and historical ACS tables

Detail: <[www.census.gov/data/tables/time-series/demo/health-insurance/acs-hi.html](http://www.census.gov/data/tables/time-series/demo/health-insurance/acs-hi.html)>

Historical: <[www.census.gov/library/publications/2022/demo/p60-278.html](http://www.census.gov/library/publications/2022/demo/p60-278.html)>

**Table HI05\_ACS. Health Insurance Coverage Status and Type of Coverage by State and Age for All Persons: 2021**

Information on confidentiality protection, sampling error, nonsampling error, and definitions is available at <[https://www2.census.gov/programs-surveys/acs/tech\\_docs/accuracy/ACS\\_Accuracy\\_of\\_Data\\_2021.pdf](https://www2.census.gov/programs-surveys/acs/tech_docs/accuracy/ACS_Accuracy_of_Data_2021.pdf)>.

Source: U.S. Census Bureau, 2021 American Community Survey (ACS).

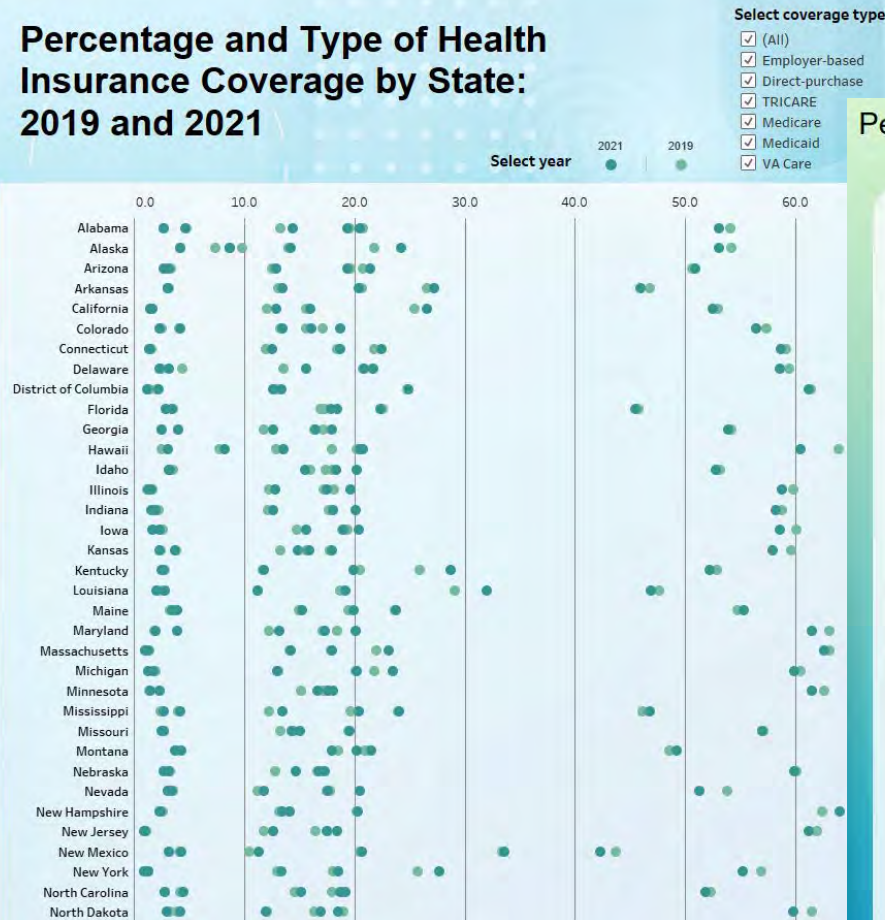
(Numbers in thousands. Civilian noninstitutionalized population. Margins of error calculated using replicate weights)

Nation/State	Characteristic	Total		Number	Margin of error	Percent	Margin of error	An						
		Number	Margin of error					Number	Margin of error	Percent	Margin of error	Employment-based		
												Number	Margin of error	Percent
United States	All people	326,913	18	298,686	171	91.4	0.1	219,075	344	67.0	0.1	178,662	327	54.7
	Under 65 years	272,171	31	244,389	163	89.8	0.1	188,305	301	69.2	0.1	161,948	294	59.5
	Under 19 years	77,831	47	73,666	67	94.6	0.1	47,061	136	60.5	0.2	40,871	139	52.5
	19 - 64 years	194,340	48	170,723	153	87.8	0.1	141,245	206	72.7	0.1	121,077	201	62.3
	65 years and over	54,742	24	54,297	29	99.2	Z	30,769	89	56.2	0.2	16,714	74	30.5
Alabama	All people	4,958	3	4,469	19	90.1	0.4	3,292	28	66.4	0.6	2,635	28	53.1
	Under 65 years	4,091	5	3,607	19	88.2	0.5	2,790	27	68.2	0.6	2,352	27	57.5
	Under 19 years	1,191	6	1,144	7	96.0	0.5	669	13	56.2	1.1	569	14	47.8
	19 - 64 years	2,900	7	2,464	17	84.9	0.6	2,121	19	73.1	0.7	1,782	18	61.5
	65 years and over	867	3	862	3	99.5	0.2	503	9	58.0	1.0	283	8	32.7
Alaska	All people	702	2	622	6	88.6	0.8	450	10	64.2	1.4	373	10	53.1
	Under 65 years	605	2	527	6	87.1	0.9	394	9	65.1	1.5	328	10	54.3
	Under 19 years	187	2	172	3	92.1	1.4	109	5	58.6	2.6	87	5	46.4
	19 - 64 years	418	3	355	4	84.9	1.0	285	6	68.0	1.4	242	7	57.8
	65 years and over	97	1	95	1	97.9	0.8	57	3	58.2	2.5	45	3	45.9
Arizona	All people	7,174	3	6,408	27	89.3	0.4	4,534	35	63.2	0.5	3,653	37	50.9
	Under 65 years	5,852	4	5,096	26	87.1	0.4	3,836	33	65.5	0.6	3,329	35	56.9
	Under 19 years	1,716	5	1,570	13	91.5	0.7	999	19	58.2	1.1	872	17	50.8
	19 - 64 years	4,137	7	3,527	21	85.3	0.5	2,837	21	68.6	0.5	2,458	25	59.4
	65 years and over	1,322	3	1,311	4	99.2	0.2	698	10	52.8	0.8	324	9	24.5
	All people	2,975	2	2,702	14	90.8	0.5	1,756	22	59.0	0.7	1,369	22	46.0

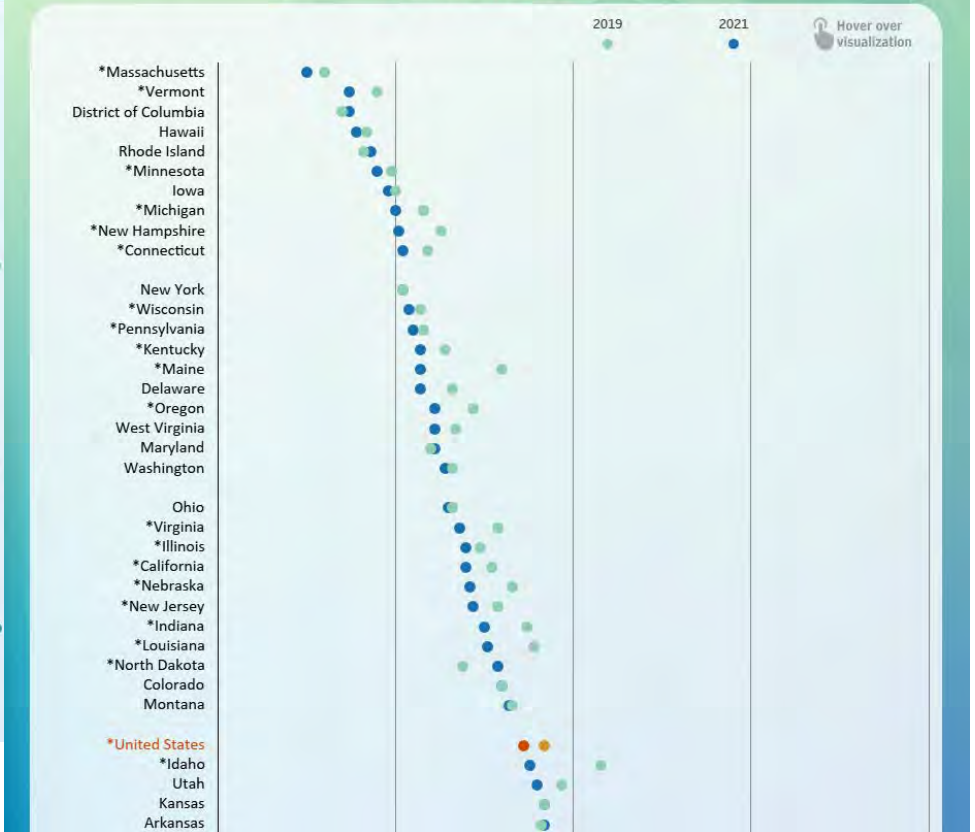
# Accessing Estimates: Interactive Graphics

Interactive graphics: <<https://www.census.gov/library/visualizations/interactive.html>>

## Percentage and Type of Health Insurance Coverage by State: 2019 and 2021



## Percentage of Population Without Health Insurance Coverage by State: 2019 and 2021



# Accessing Estimates

- Supplemental release materials
- **Tables on [data.census.gov](https://data.census.gov)**
- Microdata

# Accessing Estimates: data.census.gov



## Explore Census Data

Learn about America's People, Places, and Economy

Find Tables, Maps, and more ...



[Help](#) [Feedback](#) [Advanced Search](#)

Try searching for [grocery stores](#) in [Georgia](#) in [2017](#)

# find tables

Economic Census

EC1700BASIC | All Sectors: Summary Statistics for the U.S., States, and Selected Geographies: 2017

2017 ECN Core Statistics Summary Statistics for the U.S., States, and Selected Geographies: 2017

Home Geog. Area Topic Survey Codes Table Filter Restore Excel CSV ZIP Print More Data Map

Geographic Area Name	Meaning of NAICS code	Meaning of Tax status co...	Number of firms	Sales, value of shipment...	First-quarter payroll (\$...	Pivot Table
United States	Mining, quarrying, and oil a...	All establishments	15,615	405,405,810	12,598	<input type="checkbox"/>
United States	Mining, quarrying, and oil a...	All establishments	15,615	405,405,810	12,598	<input type="checkbox"/>
United States	Utilities	All establishments	5,886	577,000,492	20,883	<input type="checkbox"/>
United States	Construction	All establishments	701,839	1,894,168,047	95,415	<input type="checkbox"/>
United States	Manufacturing	All establishments	249,014	5,546,199,826	189,026	<input type="checkbox"/>
United States	Wholesale trade	All establishments	207,379	6,794,807,041	107,625	<input type="checkbox"/>
United States	Wholesale trade	All establishments	200,079	5,700,866,914	83,374	<input type="checkbox"/>
United States	Wholesale trade	All establishments	2,384	2,321,241,419	21,010	<input type="checkbox"/>

Search:

Geographic identifier code  
 Geographic Area Name  
 2017 NAICS code  
 Meaning of NAICS code  
 Type of operation code  
 Meaning of type of operation code  
 Tax status code  
 Meaning of Tax status code

Explore the thousands of tables we have. We are adding new tables every week.

[Explore Tables](#)



# ACS data on data.census.gov

The screenshot displays the data.census.gov interface. At the top left is the United States Census Bureau logo. A search bar contains the text 'health insurance in Minnesota' with a clear (X) and search (magnifying glass) icon, and a link to 'Advanced Search'. Below the search bar are tabs for 'All', 'Tables', 'Maps', and 'Pages', with 'All' selected. On the left sidebar, there are '2 Filters' (Health Insurance and Minnesota) and a 'Clear search' button. Below that is a 'Find a Filter' section with search and category options like Codes, Geography, Surveys, Topics, and Years. The main content area features a large heading: 'Without Health Care Coverage in Minnesota is 4.5% ± 0.2%' with a 'View This Result' button. Below this is a 'Tables' section listing four American Community Survey results (S2701, S2702, S2703, S2704, S2713) with 'View All' links for each. On the right side of the tables section, it indicates '86 Tables, 86 Maps' and 'View: 10'.

# ACS data on data.census.gov

health insurance in Minnesota Advanced Search

All **Tables** Maps Pages Microdata Help

**86 Results** Download Table Data

View: 10 | 25 | 50

American Community Survey  
**S2701 | SELECTED CHARACTERISTICS OF HEALTH INSURANCE COVERAGE IN THE UNITED STATES**  
 2021: ACS 1-Year Estimates Subject Tables

Notes Geos Years Topics Surveys Codes Hide Transpose **Margin of Error** Restore Excel CSV ZIP Print Map

Label	Minnesota		Estimate
	Total	Insured	
▼ Civilian noninstitutionalized population	5,651,958	±1,131	5,400,134
▼ AGE			
Under 6 years	404,287	±5,596	392,861
6 to 18 years	978,243	±6,637	945,824
19 to 25 years	490,623	±7,114	454,224
26 to 34 years	664,933	±6,212	608,492
35 to 44 years	763,554	±4,038	715,443
45 to 54 years	664,891	±4,043	631,183
55 to 64 years	752,385	±2,513	722,269
65 to 74 years	575,639	±2,565	573,264
75 years and older	357,403	±2,181	356,574
Under 19 years	1,382,530	±4,157	1,338,685
19 to 64 years	3,336,386	±4,969	3,131,611
65 years and older	933,042	±2,743	929,838
▼ SEX			
Male	2,826,670	±4,210	2,684,271
Female	2,825,288	±4,007	2,715,863
▼ RACE AND HISPANIC OR LATINO ORIGIN			

American Community Survey  
**S2702 | SELECTED CHARACTERISTICS OF THE UNINSURED IN THE UNITED STATES**  
 View All 19 Products

American Community Survey  
**S2703 | PRIVATE HEALTH INSURANCE COVERAGE BY TYPE AND SELECTED CHARACTERISTICS**  
 View All 12 Products

American Community Survey  
**S2704 | PUBLIC HEALTH INSURANCE COVERAGE BY TYPE AND SELECTED CHARACTERISTICS**  
 View All 12 Products

American Community Survey  
**S2713 | PRIVATE HEALTH INSURANCE COVERAGE BY TYPE AND SELECTED CHARACTERISTICS**  
 View All 2 Products

American Community Survey  
**B18135 | AGE BY DISABILITY STATUS BY HEALTH INSURANCE COVERAGE STATUS**  
 View All 20 Products

# ACS data on data.census.gov

health insurance in Minnesota X Advanced Search

All **Tables** Maps Pages Microdata Help

**86 Results** Download Table Data

American Community Survey  
**S2701 | SELECTED CHARACTERISTICS OF HEALTH INSURANCE COVERAGE IN THE UNITED STATES**  
 2021: ACS 1-Year Estimates Subject Tables

Notes **Geos** **Years** **Topics** Surveys Codes **Hide** **Transpose** **Margin of Error** Restore Excel CSV ZIP Print Map

**Minnesota**

	Total		Insured
Label	Estimate	Margin of Error	Estimate
▼ Civilian noninstitutionalized population	5,651,958	±1,131	5,400,134
▼ AGE			
Under 6 years	404,287	±5,596	392,861
6 to 18 years	978,243	±6,637	945,824
19 to 25 years	490,623	±7,114	454,224
26 to 34 years	664,933	±6,212	608,492
35 to 44 years	763,554	±4,038	715,443
45 to 54 years	664,891	±4,043	631,183
55 to 64 years	752,385	±2,513	722,269
65 to 74 years	575,639	±2,565	573,264
75 years and older	357,403	±2,181	356,574
Under 19 years	1,382,530	±4,157	1,338,685
19 to 64 years	3,336,386	±4,969	3,131,611
65 years and older	933,042	±2,743	929,838
▼ SEX			
Male	2,826,670	±4,210	2,684,271
Female	2,825,288	±4,007	2,715,863
▼ RACE AND HISPANIC OR LATINO ORIGIN			

# ACS data on data.census.gov

S2701 Advanced Search

All **Tables** Maps Pages Microdata Help FAQ Feedback

**1 Result** Download Table Data

American Community Survey  
**S2701 | SELECTED CHARACTERISTICS OF HEALTH INSURANCE COVERAGE IN THE UNITED STATES**  
 2021: ACS 1-Year Estimates Subject Tables

Notes Geos Years Topics Surveys Codes Hide Transpose **Margin of Error** Restore Excel CSV ZIP Print Map

United States				
	Total		Insured	
Label	Estimate	Margin of Error	Estimate	Margin of Error
▼ Civilian noninstitutionalized population	326,912,547	±18,221	298,685,665	±171,49
▼ AGE				
Under 6 years	22,579,171	±38,035	21,565,200	±43,41
6 to 18 years	55,251,332	±56,302	52,100,615	±61,73
19 to 25 years	29,194,212	±65,720	25,059,158	±70,05
26 to 34 years	39,736,024	±58,393	33,724,063	±78,26
35 to 44 years	42,801,119	±38,194	37,236,650	±57,19
45 to 54 years	40,177,707	±35,909	35,779,068	±56,54
55 to 64 years	42,431,040	±19,520	38,923,950	±44,17
65 to 74 years	33,423,349	±22,261	33,087,867	±26,41
75 years and older	21,318,593	±17,946	21,209,094	±18,23
Under 19 years	77,830,503	±46,750	73,665,815	±66,84
19 to 64 years	194,340,102	±47,660	170,722,889	±153,46
65 years and older	54,741,942	±24,273	54,296,961	±28,87
▼ SEX				
Male	160,634,821	±32,226	145,030,492	±110,89
Female	166,277,726	±32,454	153,655,173	±92,43
▼ RACE AND HISPANIC OR LATINO ORIGIN				
White alone	200,166,784	±124,820	187,915,153	±151,58

# ACS data on data.census.gov

S2701 Advanced Search

All **Tables** Maps Pages Microdata Help FAQ Feedback

**1 Result** Download Table Data

View: 10 | 25 | 50

American Community Survey  
**S2701 | SELECTED CHARACTERISTICS OF HEALTH INSURANCE COVERAGE IN THE UNITED STATES**  
 2021: ACS 1-Year Estimates Subject Tables

Notes Geos Years Topics Surveys Codes 123 Hide Transpose **Margin of Error** Restore Excel CSV ZIP Print Map

**United States**

	Total		Insured	
Label	Estimate	Margin of Error	Estimate	Margin of Error
▼ Civilian noninstitutionalized population	326,912,547	±18,221	298,685,665	±171,49
▼ AGE				
Under 6 years	22,579,171	±38,035	21,565,200	±43,41
6 to 18 years	55,251,332	±56,302	52,100,615	±61,73
19 to 25 years	29,194,212	±65,720	25,059,158	±70,05
26 to 34 years	39,736,024	±58,393	33,724,063	±78,26
35 to 44 years	42,801,119	±38,194	37,236,650	±57,19
45 to 54 years	40,177,707	±35,909	35,779,068	±56,54
55 to 64 years	42,431,040	±19,520	38,923,950	±44,17
65 to 74 years	33,423,349	±22,261	33,087,867	±26,41
75 years and older	21,318,593	±17,946	21,209,094	±18,23
Under 19 years	77,830,503	±46,750	73,665,815	±66,84
19 to 64 years	194,340,102	±47,660	170,722,889	±153,46
65 years and older	54,741,942	±24,273	54,296,961	±28,87
▼ SEX				
Male	160,634,821	±32,226	145,030,492	±110,89
Female	166,277,726	±32,454	153,655,173	±92,43
▼ RACE AND HISPANIC OR LATINO ORIGIN				
White alone	200,166,784	±124,820	187,915,153	±151,58

# ACS data on data.census.gov

S2701 Advanced Search

All **Tables** Maps Pages Microdata Help FAQ Feedback

**1 Result** Download Table Data

American Community Survey  
**S2701 | SELECTED CHARACTERISTICS OF HEALTH INSURANCE COVERAGE IN THE UNITED STATES**  
 2021: ACS 1-Year Estimates Subject Tables

Notes Geos Years Topics Surveys Codes Hide Transpose Margin of Error Restore Excel CSV ZIP Print Map

United States				
	Total		Insured	
Label	Estimate	Margin of Error	Estimate	Margin of Error
▼ Civilian noninstitutionalized population	326,912,547	±18,221	298,685,665	±171,491
▼ AGE				
Under 6 years	22,579,171	±38,035	21,565,200	±43,411
6 to 18 years	55,251,332	±56,302	52,100,615	±61,731
19 to 25 years	29,194,212	±65,720	25,059,158	±70,051
26 to 34 years	39,736,024	±58,393	33,724,063	±78,261
35 to 44 years	42,801,119	±38,194	37,236,650	±57,191
45 to 54 years	40,177,707	±35,909	35,779,068	±56,541
55 to 64 years	42,431,040	±19,520	38,923,950	±44,171
65 to 74 years	33,423,349	±22,261	33,087,867	±26,411
75 years and older	21,318,593	±17,946	21,209,094	±18,231
Under 19 years	77,830,503	±46,750	73,665,815	±66,841
19 to 64 years	194,340,102	±47,660	170,722,889	±153,461
65 years and older	54,741,942	±24,273	54,296,961	±28,871
▼ SEX				
Male	160,634,821	±32,226	145,030,492	±110,891
Female	166,277,726	±32,454	153,655,173	±92,431
▼ RACE AND HISPANIC OR LATINO ORIGIN				
White alone	200,166,784	±124,820	187,915,153	±151,581

# ACS Data in data.census.gov

Data Product	2010	2011	2012	2013	2014	2015	2016	2017	2018	2019	2020	2021
Detailed Tables	✓	✓	✓	✓	✓	✓	✓	✓	✓	✓	–	✓
Subject Tables	✓	✓	✓	✓	✓	✓	✓	✓	✓	✓	–	✓
ACS Supplemental Estimates	–	–	–	–	✓	✓	✓	✓	✓	✓	–	
Selected Population Profiles	✓	✓	✓	✓	✓	✓	✓	✓	✓	✓	–	✓
Data Profiles	✓	✓	✓	✓	✓	✓	✓	✓	✓	✓	–	✓
Comparison Profiles	✓	✓	✓	✓	✓	✓	✓	✓	✓	✓	–	✓
Detailed Tables, ACS 5-Year	✓	✓	✓	✓	✓	✓	✓	✓	✓	✓	✓	

✓: Available now

**Blank cell:** Coming soon

# Data.census.gov Webinars, Tutorials, and Feedback

Go here for info on data.census.gov:

<https://census.gov/data/what-is-data-census-gov.html>

**Census Academy:**

<https://census.gov/data/academy/webinars/upcoming.html>

- **Webinars:** Exploring Census Data Webinar Series  
<https://www.census.gov/data/academy/webinars/series/exploring-census-data.html>
- **Data Gems:** A series of short “How-To” videos  
[census.gov/data/academy/data-gems.html](https://census.gov/data/academy/data-gems.html)

**Feedback:** Email comments to [cedsci.feedback@census.gov](mailto:cedsci.feedback@census.gov)





# Accessing Estimates

- Supplemental release materials
- Tables on [data.census.gov](https://data.census.gov)
- **Microdata**

# CPS ASEC Public-Use Data

Public-use CPS ASEC available online (released 9/13/22)

- <https://www.census.gov/data/datasets/time-series/demo/cps/cps-asec.html>
- Public-use dictionary also posted
- Available in ASCII, SAS, and CSV formats

# ACS Public-Use Data Release

Public-use Microdata Sample (PUMS) available **October 20<sup>th</sup>**

- 1% public use microdata sample (1% of population)
- The smallest identifiable geographic unit is the Public Use Microdata Area (PUMA) containing at least 100,000 persons
  - PUMAs are generally groups of counties or parts of counties, but there are exceptions
  - PUMAs do not cross state boundaries

*Updated June 29, 2022*

Planned Release	Data Products <sup>1</sup>	Lowest Level Geography <sup>2</sup>
October 20, 2022	1-Year Public Use Microdata Sample (PUMS) File	Public Use Microdata Area (PUMA)
	1-Year Supplemental Estimates Release: <ul style="list-style-type: none"><li>• Supplemental Tables</li></ul>	Places, County Subdivisions (where available) Geographies of 20,000+ population

# 2021 5-Year ACS Release

Updated June 29, 2022

Planned Release	Data Products <sup>1</sup>	Lowest Level Geography <sup>2</sup>	
		Data Product	Lowest Level of Geography
December 8, 2022	<b>5-Year Data Release:</b> <sup>3</sup> <ul style="list-style-type: none"> <li>Data Profiles</li> <li>Detailed Tables</li> <li>Summary File</li> <li>Comparison Profiles</li> <li>Subject Tables</li> <li>Narrative Profiles (on ACS website)</li> </ul>	Data Profiles	Census Tracts
		Detailed Tables	Block Groups
		Summary File	Block Groups
		Comparison Profiles	Places/County Subdivisions
		Subject Tables	Census Tracts
		Narrative Profiles	Census Tracts
		January 26, 2023	5-Year Public Use Microdata Sample (PUMS) File
	5-Year Variance Replicate Estimates	Block Group	

<sup>1</sup> For information on the types of data products available, see the ACS Data Tables and Tools. This year, ACS data products will be released on the Census Bureau's new data dissemination platform at [data.census.gov](https://data.census.gov). American FactFinder will not host any of the 2018 ACS data releases. Geographic Comparison Tables and Ranking Tables will not be supported on [data.census.gov](https://data.census.gov) for the 2018 ACS release, and the Census Bureau is in the process of determining whether the new platform will support these types of tables in the future.

<sup>2</sup> The lowest level of geography refers to the Census geographic hierarchy. For more information on census geography, see the Geography Program Glossary.

<sup>3</sup> Media embargos will be available 48 hours before the public releases of the ACS 1-year estimates in September and the ACS 5-year estimates in December. To learn more about the embargos and what will be new with upcoming releases, tune into the pre-release webinars. Please check the ACS Events page for updates.

# SHADAC Resources

# Visit [StateHealthCompare.SHADAC.org](https://StateHealthCompare.SHADAC.org)

The screenshot shows the 'STATE HEALTH COMPARE' website. At the top, it says 'DATA ANALYZED BY SHADAC'. Below that, there are buttons for 'Explore Data' and 'About'. A navigation bar includes 'Share', 'Email', and 'Download Data'. The main heading is 'Use State Health Compare to create customized reports for state-level health estimates', with an 'Explore the Data >' button. Below this is a list of categories under 'Explore Data', including: Health Insurance Coverage, Cost of Care - Dollars, Cost of Care - Behavior Changes, Health Behaviors, Outcomes, Access to Care, Utilization of Care, Quality of Care, Public Health, and Social and Economic Factors. Each category has a list of specific metrics or indicators.



**ACCESS** state-level estimates related to the Culture of Health and health care



**DOWNLOAD** customized reports and select data as an Excel file



**GENERATE** detailed graphics, trend lines, maps, bar charts, and data tables



**SUBSCRIBE** to SHADAC's newsletter for updates on new resources and data releases



**FOLLOW** us on Twitter @SHADAC or on LinkedIn

# SHADAC's State Health Compare

## 46 state-level measures of:

- Health Insurance Coverage
- Cost of Care
- Health Behaviors
- Outcomes
- Access to Care
- Utilization of Care
- Quality of Care
- Public Health
- Social and Economic Factors

Health Insurance Coverage	Access to Care
Coverage Type (2020)	Adults with No Personal Doctor
Coverage Type	Had Usual Source of Medical Care
Workers in Establishments that Offer Coverage	Broadband Internet Access
Cost of Care - Dollars	Physicians Who Accept New Patients
People with High Medical Care Cost Burden	Physicians Who Accept New Medicaid Patients
Costs of Potentially Preventable Hospitalizations	Utilization of Care
Medical Out-of-Pocket Spending	Had Dental Visit
Average Annual ESI Premium	Had Emergency Department Visit
Average Annual ESI Deductible	Had General Doctor or Provider Visit
Employee Contributions to Premiums	Quality of Care
High-Deductible Health Plans	Adult Cancer Screenings
Medicaid Expenses as Percent of State Budget	Adult Potentially Preventable Hospitalizations
Cost of Care - Behavior Changes	Child Potentially Preventable Hospitalizations
Adults Who Forgo Needed Medical Care	Public Health
Trouble Paying Medical Bills	Public Health Funding
Made Changes to Medical Drugs	Child Vaccinations
Health Behaviors	Adult Flu Vaccinations
Adult Binge Drinking	Social and Economic Factors
Adult Smoking	Children Considered to be Poor
Adult E-Cigarette Use	Unemployment Rate
High School Smoking	Income Inequality
Sales of Opioid Painkillers	Unaffordable Rents
Opioid-Related and Other Drug Poisoning Deaths	Adverse Childhood Experiences
Alcohol-Involved Deaths	
Outcomes	
Chronic Disease Prevalence	
Activities Limited due to Health Difficulty	
Health Status	
Cancer Incidence	
Premature Death	
Adult Unhealthy Days	
Suicide Deaths	

# SHADAC's State Health Compare

## 16 data sources including:

- American Community Survey (ACS)
- Current Population Survey (CPS)
- Behavioral Risk Factor Surveillance System (BRFSS)
- National Health Interview Survey (NHIS)
- National Survey for Children's Health (NSCH)
- Healthcare Cost and Utilization Project (HCUP)
- National Electronic Health Records Survey (NEHRS)





# SHADAC's State Health Compare



Access policy-relevant breakdowns available for most measures



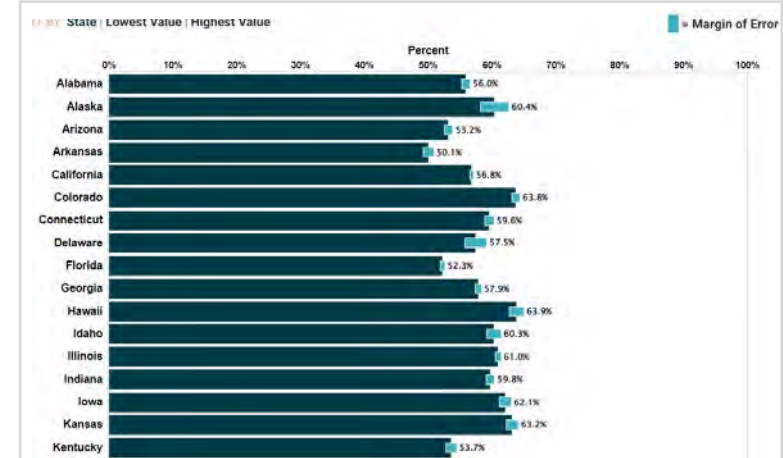
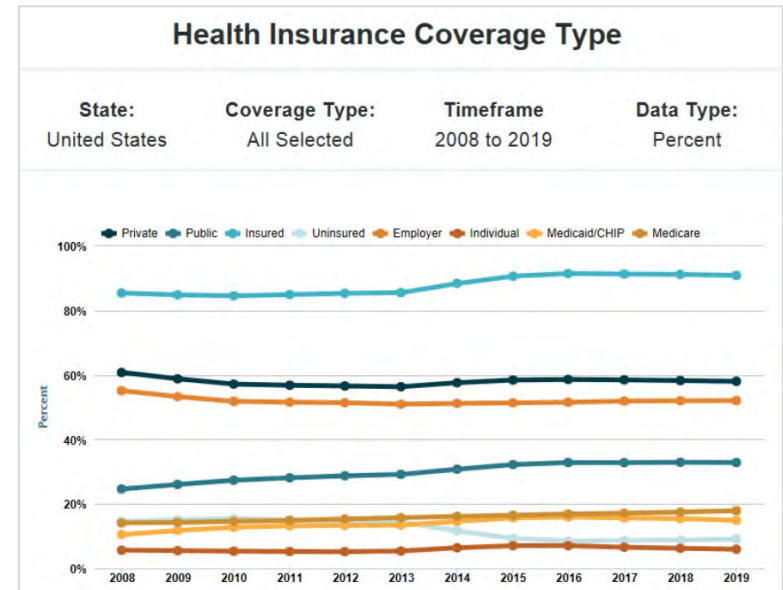
Generate tables, maps, bar charts, trends, and state rankings



Margins of error in addition to point estimates allows for [significance testing](#)



Data can be downloaded in spreadsheet format



Hest, Robert. (June 2021). *Significance Testing Using State Health Compare*. SHADAC.  
Available at: [www.shadac.org/publications/significance-testing-using-state-health-compare](http://www.shadac.org/publications/significance-testing-using-state-health-compare)

# Virtual Tour

[statehealthcompare.shadac.org/](http://statehealthcompare.shadac.org/)

# Forthcoming Updates to Briefs

## Comparing Federal Government Surveys 2022 (2021 data)

shadac  
STATE HEALTH ACCESS DATA ASSISTANCE CENTER

Robert Wood Johnson Foundation

ANNUAL RWJF BRIEF • JANUARY 2022

### Comparing Federal Government Surveys That Count the Uninsured: 2021

**INTRODUCTION**

Timely and accurate estimates of the number of people who do not have health insurance coverage are important for understanding trends in health insurance coverage and the impacts of policy changes that affect health insurance coverage. This brief provides an annual update to comparisons of uninsurance estimates from four federal surveys<sup>1</sup>:

- The American Community Survey (ACS)
- The Current Population Survey (CPS)
- The Medical Expenditure Panel Survey – Household Component (MEPS-HC)
- The National Health Interview Survey (NHIS)

In this brief, we present current and historical national estimates of uninsurance along with the most recent available state-level estimates from these surveys. We also discuss the main reasons for variation in the estimates across the different surveys, including how these surveys and their estimates were affected by the ongoing COVID-19 pandemic, and how data users should consider these impacts when considering if and when to selectively use these data.

**National Estimates**

Table 1 shows the most recent available estimates of uninsurance from each of the four surveys listed above. Some of the surveys produce estimates of the number of adults who were uninsured for an entire year, while others estimate uninsurance at a specific point in time (i.e., at the time of the survey), and some collect multiple measures of uninsurance.

**Table 1. National Uninsurance Estimates from Four Federal Surveys: Total Population**

Survey	Time Period	Uninsured for the Entire Year		Uninsured at a Specific Point in Time	
		Number (millions)	Percent of Population	Number (millions)	Percent of Population
ACS	2020	N/A	N/A	28.6	8.8
CPS	2020	28.0	8.6	N/A	N/A
MEPS	2019	20.6	6.3	N/A	N/A
NHIS	2020	19.1	6.0	33.6	9.7

Sources: CPS estimates from U.S. Census Bureau, 2021, "Health Insurance Coverage in the United States: 2020" (ACS estimates for similar noninstitutionalized population from SHADAC analysis of 2019 ACS 1-Year Experimental Data Tables, Table X2019101, Age by Health Insurance Coverage Status); NHIS estimates from Cohen, Sordif, Liu, & Blaylock, 2021, "Health Insurance Coverage: Early Release of Estimates from the National Health Interview Survey, 2020" and from SHADAC analysis of the 2020 NHIS Public Use Data; MEPS estimates from https://www.meps.gov/about/meps.cfm

1. See Appendix for key information: Research of these surveys, such as who is included in the survey, when and how the survey is conducted, response rates, and the availability of state-level insurance estimates.

2. Though the data are not presented here as they would not align with the single-year scope of this brief, the CPS also publishes point-in-time estimates for the survey year (e.g., 2021 data year estimates are collected in the 2022 survey year).

STATE HEALTH ACCESS DATA ASSISTANCE CENTER

## Changes to Federal Surveys Due to and During COVID-19 (2021)

shadac  
STATE HEALTH ACCESS DATA ASSISTANCE CENTER

Robert Wood Johnson Foundation

INSIGHTS

### Changes in Federal Surveys Due to and During COVID-19

**AUTHOR**

Andrea Stewart  
Marketing and Communications  
Specialist, SHADAC

**SUMMARY**

This brief provides an overview of changes made to annual federal surveys due to the disruption of the coronavirus pandemic. Such changes included adapting, changing, and/or delaying survey field operations, asking questions to ask or modify existing survey questionnaires, and understanding and addressing falling survey response rates. The brief examines four major surveys—the American Community Survey (ACS), Current Population Survey (CPS), Medical Expenditure Panel Survey (MEPS), and the National Health Interview Survey (NHIS)—in order to understand the breadth of COVID's impact on 2020 federal survey data.

Stay updated on our latest work by subscribing to our newsletter!

**FEDERAL SURVEY CHANGES**

- American Community Survey
- Current Population Survey
- Medical Expenditure Panel Survey
- National Health Interview Survey

**Introduction**

While we already know that the COVID-19 pandemic has been the cause of major disruptions to the daily lives, work, education, and health among the United States and world populations, we may never fully understand the depths of its impact due to another major ramification of the coronavirus—the interruption of data collection processes and falling response rates for annual federal surveys, which under normal circumstances are ideally suited to measure such changes.

Some of the disruptions have been so significant that certain surveys were forced to suspend operations entirely, as with the National Health and Nutrition Examination Survey (NHANES) from the Centers for Disease Control and Prevention (CDC). As a result, the CDC will not broadly release estimates from the survey, feeling that they are not accurately representative of the population, and have instead combined estimates from 2017–March 2020 specifically, to create a “pre-pandemic” data cohort.

Similarly, on a recent webinar, the U.S. Census Bureau made the major announcement that they will not be releasing 2020 American Community Survey 1-year estimates nor any related products as usual in September. Instead, due to the impact of the pandemic on response rates, nonresponse bias, and data quality, only “experimental” 1-year estimates for 2020 for a limited set of geographies will be available in November, along with a version of the 2020 1-year Public Use Microdata files with experimental survey weights in December.

Other surveys have made attempts to push forward and adapt to COVID-era challenges by shifting in-person collection methods to phone and email, adding COVID-related questions to their questionnaires, or even creating an entirely new survey, as the U.S. Census Bureau did in launching the Household Pulse Survey (HPS), a rapid-collection survey designed to provide near-real time information about the effect of the pandemic on the U.S. population.<sup>1</sup>

This brief provides a summary of some of these changes and challenges for major federal surveys with health-related content—American Community Survey, Current Population Survey Annual Social and Economic Supplement, Medical Expenditure Panel Survey, and National Health Interview Survey—and explain what effects these adaptations may have for understanding 2020 data as it becomes available.

**Methodological Changes**

**Survey Operations**

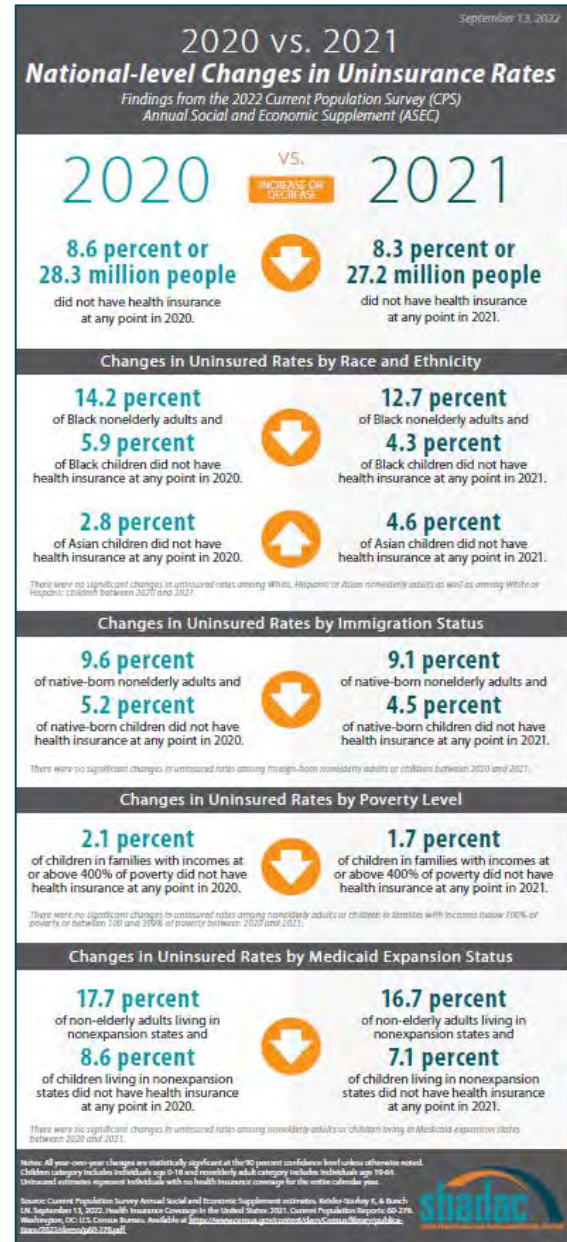
All federal surveys included in this brief made major changes to their data collection timeframes and methodologies in 2020, some of which have continued into 2021. Summarized below are some of the challenges organizations conducting such surveys faced (suspension, survey mode changes, limited staffing, etc.) and strategies they implemented to adapt and overcome.

STATE HEALTH ACCESS DATA ASSISTANCE CENTER

# Changes in Coverage in 2021

## New SHADAC Blogs and Infographic

- [CPS ASEC: 2021 National Health Insurance Coverage Estimates Show Falling Uninsured and Private Coverage Rates Across Population Demographics \(Blog and Infographic\)](#)
- [2021 ACS: Estimates Show Declining Uninsurance Rates Across 28 States, Driven by Rise in Public Coverage and Fall in Private Coverage \(Blog\)](#)



# MN Population Center Releases (IPUMS)

- ACS microdata is currently available through 2020; CPS ASEC microdata available through 2021
- 2021 1-Year ACS microdata will be available in the coming months
- SHADAC Health Insurance Unit (HIU) and Federal Poverty Guidelines (FPG) variables for CPS and ACS are available through IPUMS
- <http://www.ipums.org>



# Question & Answer



**Katherine Keisler Starkey**

**Laryssa Mykyta**

**Sharon Stern**

**Adriana Hernandez-Viver**

**Robert Hest**

**Kathleen Call**

***Please submit question using the Q&A feature  
or Tweet questions to @SHADAC***

# Thank you!

Please email [shadac@umn.edu](mailto:shadac@umn.edu)  
with any follow-up questions.

Visit our website at  
[www.shadac.org](http://www.shadac.org)

And follow us on Twitter @SHADAC

