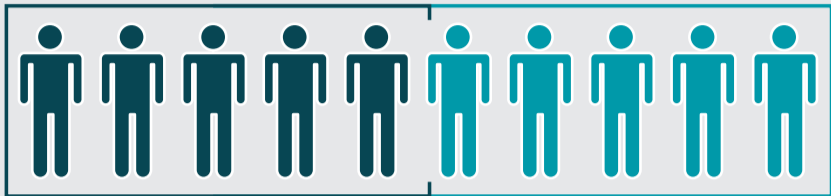




# HEALTH INEQUITY:

## Health Care Access among Latino\* children in California

**MORE THAN HALF (51.9%)**  
of the children living in California are Latino



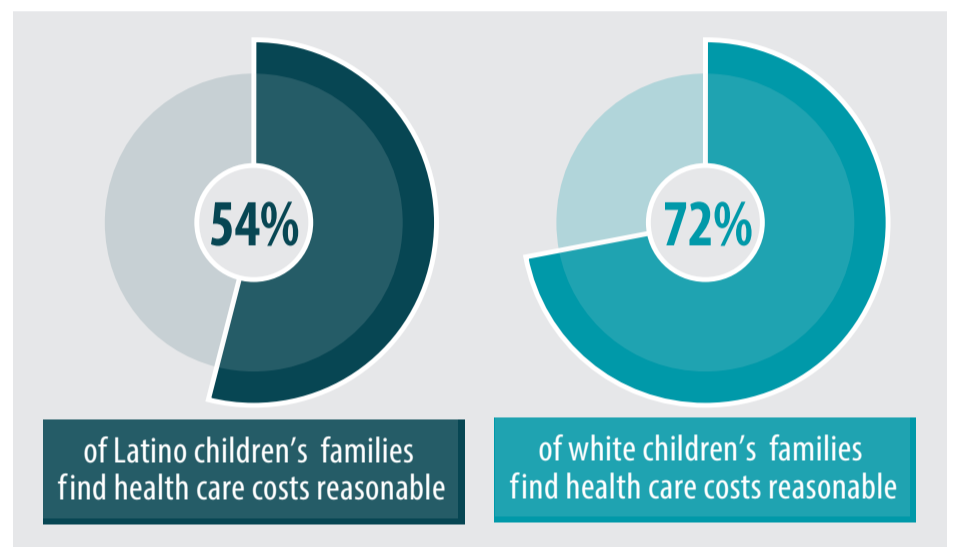
### Access to Health Care

- Latino California kids (68%) are less likely than white children (86%) to have a usual source of care.
- Latino California kids are less likely than white children to have had a preventive medical visit in the last 12 months.



### Health Care Coverage and Costs

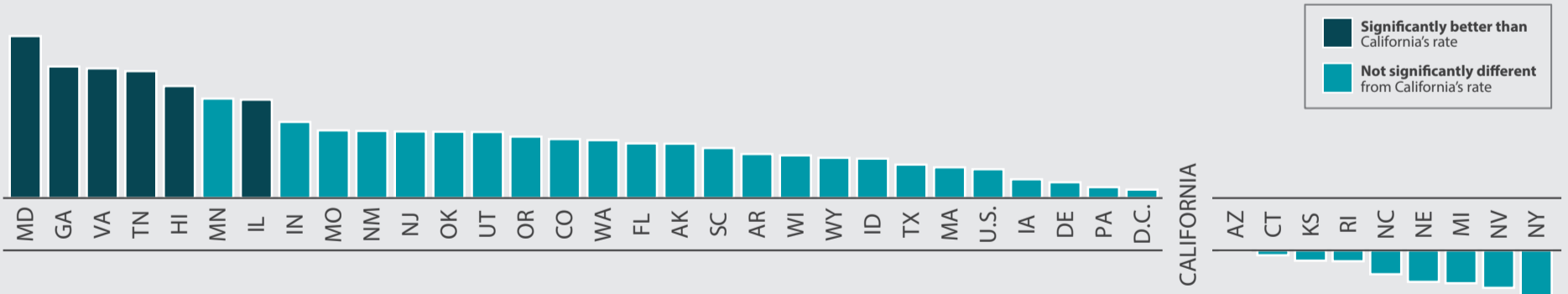
- While most Latino children have health coverage in California (92.7%), they are less likely to be covered than white children (99.4%).
- Latino children in California (89%) are slightly less likely than white children in California (96%) to have insurance that “always/usually” offers benefits that meet the child’s needs.
- Overall, California Latino children’s families are less likely to find their health care costs reasonable compared to white children’s families.



### Latino Kids in California Compared to Other States

#### Usual Source of Care: Latino Kids in California Compared to Latino Kids in Other States

- Six states performed better than California on this measure.



<b>67.8% California</b>	70.0% Delaware	66.4% Kansas	77.0% Missouri	N/A North Dakota	72.4% Texas
71.7% United States	69.0% D.C.	N/A Kentucky	N/A Montana	N/A Ohio	76.8% Utah
N/A Alabama	75.3% Florida	N/A Louisiana	63.5% Nebraska	76.9% Oklahoma	N/A Vermont
75.2% Alaska	85.8% Georgia	N/A Maine	62.7% Nevada	76.2% Oregon	85.5% Virginia
67.8% Arizona	83.1% Hawaii	89.9% Maryland	76.9% New Jersey	69.3% Pennsylvania	75.7% Washington
73.8% Arkansas	73.2% Idaho	72.0% Massachusetts	77.0% New Mexico	66.3% Rhode Island	N/A West Virginia
75.9% Colorado	81.3% Illinois	63.3% Michigan	61.5% New York	74.6% South Carolina	73.6% Wisconsin
67.1% Connecticut	78.2% Indiana	81.4% Minnesota	64.5% North Carolina	N/A South Dakota	73.3% Wyoming
	70.4% Iowa	N/A Mississippi		85.1% Tennessee	

N/A Estimates suppressed due to insufficient sample size and/or relative standard errors (RSEs) > 30%.

\* The National Survey of Children’s Health collects and reports on children of Hispanic ethnicity. Note: Unless otherwise noted, comparisons are statistically significant at the 95% confidence level. Source: SHADAC analysis of the 2016 National Survey of Children’s Health. Child and Adolescent Health Measurement Initiative, Data Resource Center for Child and Adolescent Health. (2018). 2016 National Survey of Children’s Health (NSCH) (Excel) CAHMI DRC Data Set. U.S. Census Bureau. Retrieved March, 2018 from www.childhealthdata.org. Johns Hopkins Bloomberg School of Public Health.

Made possible with funding from the California Health Care Foundation.

