

Phase 1 Advisory Committee Members
SHADAC Medicaid Equity Monitoring Tool Project



Phase 1 Advisory Committee Members



Christian Amador, MBA, MSc

Christian Amador is the Director of Health Equity Initiatives at Satcher Health Leadership Institute at Morehouse School of Medicine. His work focuses on advancing health equity through initiatives that create systemic change at the intersection of policy and equity by addressing the social and political determinants of health, mental and behavioral health, and overall health system transformation. He oversees specific works including serving as project lead for the Uber 10 Million Ride Share Program and the OMH Health Equity Accelerator, addressing data equity through the [HealthEquityTracker.org](https://www.healthequitytracker.org) project, highlighting racial and ethnic inequities through journal publications and health literacy promotion, developing leadership programs, addressing climate change and the impact on health outcomes in vulnerable populations, and working with community leaders nationwide such as AARP, Google.org/YouTube, and Deloitte Consulting LLP to advance the health equity agenda. Mr. Amador has 10 years of previous experience in healthcare administration, having worked in multiple leadership roles in inpatient and outpatient settings at Memorial Healthcare System in Florida. Previously, Mr. Amador conducted cancer research at the National Institute on Aging. He holds a Bachelor of Science in Microbiology and Cell Science from the University of Florida, a Master of Science in Biomedical Science from Barry University, and a Master of Business Administration focusing on Complex Health Systems from Nova Southeastern University.



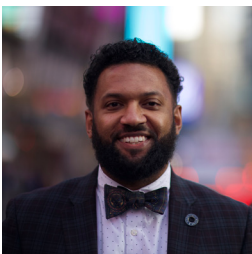
Lannesse Baker, MPH

Lannesse Baker is a PhD student in Indigenous Health at the University of North Dakota. She has collaborated with tribes and urban Native communities for nearly 15 years on health focused projects. Her work is community-centered and advocates for the participation of Native people. She strives to engage research, programming, and practice that is reflective of the strengths in Native communities. Lannesse is a citizen of the Turtle Mountain Band of Chippewa and has family from the Fond du Lac Band of Lake Superior Chippewa. She currently resides at Meskwaki Nation in Iowa with her family. Lannesse earned a Master of Public Health and Bachelor of Arts at the University of Minnesota.



Joseph Benitez, PhD

Joseph Benitez is an Assistant Professor at the University of Kentucky College of Public Health in the Department of Health Management and Policy. His research focuses primarily on the impact of public policy changes on access to care, medically underserved populations and the role of the health care safety net, and the Medicaid program. Recently he has investigated the implications of Medicaid expansion for safety net hospital financing as well as hospital utilization patterns among Kentucky's Medicaid expansion population. Dr. Benitez received his Bachelor of Science in Psychology from the University of Georgia, his Master of Public Health from the University of Kentucky, and his PhD in Health Policy and Administration from the University of Illinois, Chicago.



Nathan Chomilo, MD

Dr. Nathan T. Chomilo is Medical Director for the State of Minnesota's Medicaid & MinnesotaCare programs and practices as a General Pediatrician with Park Nicollet Health Services/HealthPartners. He also served as the State of Minnesota's COVID-19 vaccine equity director and as a Senior Advisor on Equity to the Minnesota Commissioner of Health. He received a Zoology degree from Miami University (Oxford, OH) and graduated from the University of Minnesota Medical School. He completed his combined residency in Internal Medicine and Pediatrics at the University of Minnesota and was the Pediatric Chief Resident at the University of Minnesota Children's Hospital. Prior to working for the State of Minnesota he was also an internal medicine hospitalist. His advocacy work has included the impact early childhood intervention and healthcare access have on the long-term prospects of our children and how physicians and health systems can address racial & health equity. He is a member of the American Academy of Pediatrics (AAP) Council on Early Childhood and the Section on Minority Health, Equity & Inclusion (MHEI), serving on MHEI's Executive Committee, a member of the board of directors for the MN chapter of the AAP and a fellow of the American College of Physicians. He is an Adjunct Assistant Professor of Pediatrics at the University of Minnesota Medical School, cofounded the organization Minnesota Doctors for Health Equity, serves on the board of directors of Reach Out and Read MN and National and on the steering committee of the Minnesota Perinatal Quality Collaborative. He is a member of the National Committee for Quality Assurance's (NCQA) Equity in HEDIS Expert Work Group and was selected for the National Academies of Sciences, Engineering, and Medicine's Committee on Improving the Health and Wellbeing of Children and Youth through Health Care System Transformation. His work has been recognized by the City of Minneapolis Department of Civil Rights, which recognized him as a 2019 History Maker at Home recipient, Minnesota Physician, which named him one of the 100 most influential health care leaders in 2020, the Minnesota Medical Association, which awarded him the President's Award in 2021 and the Aspen Institute which selected him to be an Aspen Ascend Fellow in 2022.

Phase 1 Advisory Committee Members



Linda Elam, PhD, MPH

Linda Elam is a Managing Director at Manatt Health. She focuses on issues relating to health equity, Medicaid strategy, long-term care, and federal and local policy. Dr. Elam has previous experience as CEO and Plan President of Amerigroup, D.C., Inc., a managed care organization serving the Medicaid population of Washington, D.C., as well as the Deputy Assistant Secretary for planning and evaluation, directing the Office of Disability, Aging and Long-Term Care Policy at the U.S. Department of Health & Human Services. She has also served as a Senior Deputy Director and State Medicaid Director at the District of Columbia's Department of Health Care Finance, and as a principal policy analyst with the Henry J. Kaiser Family Foundation where she focused on prescription drug policy, Medicaid and access to care, and racial and ethnic disparities in health care. Dr. Elam received her Bachelor of Science degree in Zoology from Howard University, her Master of Public Health in Health Policy and Administration from the University of California at Berkeley, and her PhD in Health Policy and Management from Johns Hopkins University.



Tekisha Dwan Everette, PhD

Tekisha Dwan Everette is the Executive Director at Health Equity Solutions. She previously served as the Managing Director of Federal Government Affairs with the American Diabetes Association where she provided strategic leadership on policy and advocacy initiatives. She also has experience as a government relations consultant with Drinker, Biddle, and Reath, LLC, where she represented the interests of several nonprofit health care organizations on issues such as health reform, Medicare, Medicaid, and federal appropriations. Dr. Everette holds two Bachelor of Arts degrees in Political Science and Interdisciplinary Studies from Virginia Polytechnic Institute & State University, as well as a Master of Public Administration degree at the same institution. She earned her doctorate in Sociology from American University.



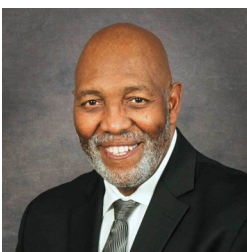
Joanne Jee, MPH

Joanne Jee is the Policy Director and Congressional Liaison at Medicaid and CHIP Payment and Access Commission (MACPAC). Her work has focused on CHIP and Children's coverage, telehealth, quality reporting, and Medicaid response to the COVID-19 pandemic. She has previously served as Program Director at the National Academy for State Health Policy, a senior analyst for U.S. Government Accountability Office (GAO), and a manager for The Lewin Group. Ms. Jee holds a Master of Public Health from University of California, Los Angeles.



Genevieve M. Kenney, PhD, MA

Genevieve M. Kenney is co-Director and a Senior Fellow in the Health Policy Center at the Urban Institute. She is an expert on Medicaid; the Children's Health Insurance Program (CHIP) and health insurance coverage, health care access and quality; and health outcomes for low-income adults, children and families. She has played a lead role in a number of Medicaid and CHIP evaluations, including multiple congressionally mandated evaluations of CHIP, and has conducted state-level evaluations of the implementation of managed care and other service delivery reform initiatives and policy changes in Medicaid and CHIP. Currently, she is leading a project for the Robert Wood Johnson Foundation focused on Medicaid and health equity that involves working with a Community Advisory Board. In other work, she is assessing variation in how the pandemic is affecting health and wellbeing in different communities and impacts of the Affordable Care Act and of Medicaid policies aimed at improving outcomes in the post-partum period and increasing receipt of evidence-based treatment for substance use disorder. Her prior work used mixed methods to examine Medicaid expansions for pregnant women, parents, and children; Medicaid family planning waivers; and a range of policy choices related to Medicaid and CHIP. She received an MA in Statistics and a PhD in Economics from the University of Michigan.



James Kyle, MD

James Kyle is the Medical Director of Quality, Diversity, Equity and Inclusion at LA Care. He has experience working in health care management, health care delivery, health policy, and quality improvement. Dr. Kyle has previously served as Chief Medical Officer at Tuba City Regional Health Care Corporation and at St. Joseph Heritage Health Care, Vice President of Medical Affairs at St. Mary Medical Center, Dean at Loma Linda University School of Public Health, and as a medical news analyst. He holds a bachelor's degree in Religion from Loma Linda University, a Master of Divinity from Andrews University, and an MD from University of California-Los Angeles School of Medicine.

Phase 1 Advisory Committee Members



Enrique Martinez-Vidal, MPP

Enrique Martinez-Vidal joined the Association for Community Affiliated Plans (ACAP) as Vice President for Quality and Operations in 2018. He is responsible for developing the quality agenda for the association, including positions on quality metrics, quality improvement activities, and research on quality in ACAP plans across the Medicaid, Medicare, and Marketplace lines of business. He also oversees ACAP's operational work with member plans on addressing health equity issues and meeting the social needs of their members. Previously, Mr. Martinez-Vidal was Vice President at AcademyHealth overseeing its state-focused portfolio as well as its payment reform work. He most recently was the project director of a Robert Wood Johnson Foundation (RWJF)- sponsored Payment Reform for Population Health initiative focusing on developing a

better understanding of the landscape of current efforts and successes related to payment reform activities that support community-wide population health improvement. From 2007-2016, he was the director of State Coverage Initiatives, an RWJF grant program providing timely, experience- and research-based information and technical assistance to state leaders to help them move the coverage aspects of health care reform forward. Previously, Mr. Martinez-Vidal was the Deputy Director for performance and benefits at the Maryland Health Care Commission, an independent state agency, and was also formerly a policy analyst with the Maryland Department of Legislative Services staffing the House Economic Matters Committee for five years. He holds a BA in political science and international studies from Dickinson College, and a master's degree in Public Policy from Georgetown University.



Marjorie McGee, PhD

Marjorie McGee, Ph.D., is the REALD & SOGI Director in the Equity & Inclusion Division of the Oregon Health Authority. She oversees a unit with 24 positions and is charged with implementing the Race, Ethnicity, Language and Disability (REALD) data collection standards, and soon the Sexual Orientation and Gender Identity (SOGI) data collection standards. Prior to being promoted to Director, Dr. McGee was the Agency's lead in implementation of the REALD data collection standards in OHA, such as the Oregon Health Plan eligibility dataset (ONE system). When able, she also conducts research and data quality analyses with other datasets using REALD data. Please visit [OHA REALD & SOGI website](#) for more information and resources.

Dr. McGee is also a disability studies scholar and has published articles on health inequities experienced by people with disabilities; she has a keen interest in taking an intersectional lens to reveal avoidable social and health inequities. Dr. McGee holds BA in Psychology from Whitman College, a MS in Counseling from Western Oregon State University, and a PhD from Portland State University.



Dan Meuse, MBA

Dan Meuse is the Deputy Director at State Health & Value Strategies and serves as a lecturer in Public Affairs at the School of Public and International Affairs at Princeton University. Mr. Meuse assists in managing and coordinating the technical assistance providers serving the states, and works with states to identify their assistance needs and policy goals. He was deeply involved in the implementation of the Affordable Care Act at the state level as Deputy Chief of Staff for Rhode Island's Lieutenant Governor. Dan also served as the principle subject matter expert for the Rhode Island Healthcare Reform Commission on Health Insurance Exchange and project director for the State Innovation Model. He received his Bachelor of Arts from Brown University and an MBA from Providence College.



Jennifer Moore, PhD, RN, FAAN

Jennifer Moore is the Founding Executive Director of the Institute for Medicaid Innovation and a research professor at the University of Michigan Medical School Department of Obstetrics and Gynecology. Dr. Moore focuses on strategically bringing together payers, clinicians, researchers, and government to design and evaluate innovative approaches to address maternal health issues such as opioid use during pregnancy, value-based purchasing, disparities, social determinants of health, and maternal mortality and morbidity. She translates research and clinical work into actionable national and state policy solutions and volunteers her time as a registered nurse at a federally qualified health center in Washington, D.C. Dr. Moore holds a Bachelor of Science in Nursing, a master's degree, and a doctorate degree in Health Systems and Policy from the University of Michigan.



Audrey Nuamah, MPH

Audrey Nuamah is a Senior Analyst at Medicaid and CHIP Payment and Access Commission. Her work focuses on analyzing Medicaid policies to advance health equity, with a current focus on beneficiary engagement and maternal health. Prior to joining MACPAC, Ms. Nuamah worked as a Program Officer at the Center for Health Care Strategies, where she worked with state agencies and provider organizations to focus on cross agency partnerships, advance health equity, and engage complex populations. Prior to that, Ms. Nuamah worked for the Commissioner of Health at the New York State Department of Health. Ms. Nuamah holds a Master of Public Health from Columbia University Mailman School of Public Health and a BA from the University of Pennsylvania.

Phase 1 Advisory Committee Members



Lilliann Paine, MPH

Lilliann Paine was formerly the Director of Technical Assistance at the National Birth Equity Collaborative (NBEC). In that role, she focused on the needs of local organizations, state agencies, health care systems, national organizations, and federal initiatives based on principles of racial equity and community centeredness. Prior to that, Ms. Paine led the Wisconsin Public Health Association's 2018 resolution: "Racism Is a Public Health Crisis" creation and adoption. She is currently an appointed member of the Wisconsin Governor's Health Equity Council, and has previously served as Chief of Staff for the Milwaukee Health Department, the Director of Wisconsin Public Health Association, and as a Research Fellow at the UW-Madison Center for Financial Security. Ms. Paine holds a Bachelor of Arts in Psychology and a Master of Public Health, focusing on community and behavioral health promotion, both from the University of Wisconsin-Milwaukee.



Kolynda Parker, MHS, MLS (ASCP)CM,CPHQ, CLSSGB

Kolynda Parker joined the Louisiana Department of Health in 2013 and currently serves as a Medicaid Deputy Director for the Bureau of Health Services Financing. In this role she directs and manage operations of the Medicaid Managed Care Organizations (MCO), Dental Benefit Plan (DBPM), Pharmacy Benefits Management (PBM), Ancillary Services, and Professional Services. She is responsible for the development, maintenance, implementation, and monitoring of the MCO, DBP and PBM which includes oversight of contract deliverables and administration of Medicaid managed care benefits as well as fee-for-service Medicaid benefits. Additionally, she directs and manage the overall goals and operations of the Quality Improvement section including setting the strategic direction for the agency's quality strategy to advance Louisiana Medicaid's agenda to improve population health, improve care for individuals, and reduce per-capita costs through systemic improvement, which includes providing leadership on the development or implementation of strategies to engage health plans in piloting/adopting alternative payment models and quality management strategies that support LDH's goals of improving health outcomes. Kolynda holds a Bachelor of Science in Microbiology, with a minor in English, from Louisiana State University, and a Bachelor of Science in Medical Technology and a Master of Health Sciences, both from Louisiana State University Health Sciences Center. She holds certifications in Clinical Laboratory Science, is a Certified Professional in Healthcare Quality, and a certified Lean Six Sigma Green Belt.



La-Mine Perkins, MSW

La-Mine Perkins is the Assistant Director of Community Engagement at NC Child. In this role she coordinates outreach activities and story collection work. At NC Child, she also leads both the Youth Advocacy Council and Parent Advisory Council. She has previous experience overseeing the Professional Education at Prevent Child Abuse North Carolina, and working with youth aging out of the foster care system at SCO Family of Services in New York. Ms. Perkins received her Bachelor of Social Work and her Master of Social Work from North Carolina State University.



Patrick Piggott, MSW, LCSW, DCSW, NCI, CPIP

Patrick Piggott is the Associate Director of the Investigations Unit, Office of Compliance and Program Integrity, Division of Health Benefits (NC Medicaid Program). Patrick co-leads NC Medicaid health equity work to improve the lives and health of Medicaid beneficiaries, focusing on individuals from historically marginalized populations. He is responsible for overseeing and monitoring 11 managed care special investigations units (SIUs), investigations, and other program integrity activities. He also monitors PAHP (Program for All-Inclusive Care for the Elderly, PACE) and PCCM (ECBI Tribal Options) for compliance, fraud, waste, and abuse. Patrick has been with the Division of Health Benefits over 12 years and the State of North Carolina over 20 years. He is a Certified Investigator and Licensed Clinical Social Worker with over 20 years of behavioral health experience. Patrick holds a Diplomate in Clinical Social Work. He earned a Bachelor of Science in Administration of Justice and a Master of Social Work from Virginia Commonwealth University-Richmond, Virginia.



Emily Polak, MPP

Emily Polak is the Director of the State & Community Health Advocacy Program at Community Catalyst. She offers technical assistance in coalition building and maintenance, grassroots organizing, and designing and implementing successful health advocacy campaigns. She also directs numerous projects including the organization's new Voices for Health Justice initiative, which partners with local and state organizations in 24 states as they advance affordability, accessibility, and equity-focused outcomes rooted in the policy solutions that are voiced by the communities themselves. Previously, Emily served as the Deputy Director of NARAL Pro-Choice Virginia, supporting the organization in its political efforts to increase reproductive justice, health, and rights for all individuals in the state. Ms. Polak holds a bachelor's degree in Sociology from Wesleyan University and a Master of Public Policy with a focus on social and urban policy and women's health from the Kennedy School of Government at Harvard University.

Phase 1 Advisory Committee Members



Shelli Silver, MBA

Shelli Silver serves as the Deputy Director for Health Plan Operations for the Arizona Health Care Cost Containment System (AHCCCS), providing comprehensive health care coverage to over 2.0 million Arizonans at a cost of \$14 billion annually. Prior to her current role, Ms. Silver served as an Assistant Director in the Division of Health Care Management at AHCCCS for more than 13 years, specializing in finance, rate setting, and reimbursement. In that time, she helped forge the 10-year long path toward physical and behavioral health care integration; orchestrated rules, contract language, policies, and guidelines for changes that have impacted the program; and created value-driven reimbursement methodologies that reward quality health care delivery. An AHCCCS employee since January 1999, Ms. Silver began her long career with

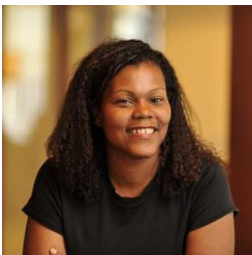
the State of Arizona in July 1993. Prior to joining AHCCCS, she was a Senior Budget Analyst in the Governor's Office of Strategic Planning and Budgeting. Ms. Silver holds an MBA from University of Illinois-Chicago and a BS in Business Administration/Marketing from the University of Illinois at Urbana-Champaign.



Gary Sing, PhD

Gary Sing is the Senior Director of Strategic Initiatives at MassHealth, Massachusetts' Medicaid agency. He is a member of the Innovation Team at MassHealth and oversees various delivery system investment programs, including a \$250M+ portfolio of healthcare workforce-focused initiatives. Gary also works to advance integration of health-related social services into MassHealth, which includes overseeing the Flexible Services program that allows MassHealth Accountable Care Organizations to use state/federal Medicaid dollars to pay for certain health-related nutrition and housing supports for certain eligible members. Additionally, Gary works to further strengthen MassHealth's commitment to health equity through management and coordination of various health equity initiatives at the agency. Prior to joining MassHealth, Gary worked as a strategy

consultant in the life sciences industry, earned a PhD from Harvard University in Engineering Sciences with a focus on computational neuroscience, and earned dual B.S.E.'s from Duke University in Biomedical Engineering and Electrical Engineering.



Kimá Taylor, MD

Kimá Taylor is the founder of Anka Consulting, a health care consulting firm, and a nonresident fellow at Urban Institute. She collaborates with researchers on topics including analyses of racial disparities in screening and treatment practices for parents with substance use. Her consulting practice focuses on expanding access to integrated primary care and behavioral health services. Dr. Taylor has previously served as the Director of the Open Society Foundations' National Drug Addiction Treatment and Harm Reduction program, Director of Population Health at ICmed, Deputy Commissioner for the Baltimore City Health Department, a health and social policy legislative assistant, and a pediatrician at a federally qualified health center in Washington D.C. She currently serves as a board member for Community

Catalyst and for Children's International Summer Villages. Dr. Taylor holds a Bachelor of Arts in Portuguese and Brazilian Studies from Brown University, a Doctor of Medicine at Brown University School of Medicine, and a Master of Public Health in Health Policy from Harvard University.



Monica Trevino, MA

Monica Trevino is the Director of the Center for Social Enterprise at Michigan Public Health Institute. She has over 20 years of experience in health care advocacy, including firsthand experience as a Medicaid member, Community Health Worker, and Medicaid administrator. She has worked in the Medicaid quality improvement space and conceptualized and coordinated the Medicaid Health Equity Project that identified racial/ethnic disparities in care received by Medicaid members in MI. Ms. Trevino earned her bachelor's degree in Anthropology from the University of Michigan, and her master's degree in Anthropology from Western Michigan University. She is a doctoral candidate in Interdisciplinary Health Sciences at Western Michigan University, studying disparities in behavioral health services in Medicaid.



Kinika Young, JD

Kinika Young is the Director of Legal Advocacy at The Leukemia & Lymphoma Society. She leads judicial advocacy and government oversight tactics to support LLS's policy priorities related to access to health-care, cost of care, and good governance. Previously Ms. Young served as Senior Director of Health Policy and Equity at Tennessee Justice Center where she led efforts to protect and strengthen the Affordable Care Act, Medicaid, and CHIP. Ms. Young was previously a member of the firm Bass, Berry & Sims where her practice focused on health care disputes, in which she represented hospitals and health care providers facing managed care payment disputes with third-party payors. She is a member of Families USA Health Equity Academy in System Transformation Fellow Class of 2019. She graduated from Florida A&M University with a

degree in Political Science and earned her Juris Doctor degree from Tulane University Law School.