



Addressing Data Quality Challenges in the 2020 American Community Survey

An Annual Conversation with the U.S. Census Bureau

Wednesday January 19, 2022 | 1:00 PM Central Time

Kathleen Call – State Health Access Data Assistance Center
Robert Hest – State Health Access Data Assistance Center
Mark Klee – United States Census Bureau

Technical Items

- Participant audio is automatically muted and video has been turned off
- Submit questions using the Q&A feature at any time during the webinar
- Problems:
 - Ask for help using the chat feature
 - Send a support request to Zoom at: <https://support.zoom.us/hc/en-us/requests/new>
- Download the slides at: <https://www.shadac.org/news/webinar-annual-conversation-us-census-bureau-addressing-data-quality-challenges-2020-american>
- Webinar recording will be posted on SHADAC's website
 - Email notice will be sent to participants

Presenters



Kathleen Call
SHADAC



Robert Hest
SHADAC



Mark Klee
U.S. Census Bureau



ACS and CPS

American Community Survey (ACS) Experimental Release

- “An Assessment of the COVID-19 Pandemic’s Impact on the 2020 ACS 1-Year Data” released October 27, 2021
- “Addressing Nonresponse Bias in the American Community Survey During the Pandemic Using Administrative Data” released November 30, 2021
- 2020 1-Year Experimental Data Tables and PUMS files released November 30, 2021
- 2020 5-Year data products to be released March 2022

Current Population Survey (CPS)

- 2020 estimates released September 14, 2021

Design Differences

	CPS	ACS
Data Collection Period	February through April of survey year	January through December of survey year
Method	Survey of civilian non-institutionalized population	Survey of U.S. population (including group quarters)
Annual housing units interviewed	About 60,000	About 2.15 million
Geography	Nation, states	Nation, states, sub-state
Mode	Phone and in-person	Mail, in-person, and internet
Uninsurance: Measure	Uninsured: All year, Part of year (since 2018), Point-in-time (since 2013)	Point-in-time
Uninsurance: Years available	1987 to 2021	2008 to 2020*

* 2020 data are experimental release only

Guidance on When to Use Each Source

	CPS	ACS
Trends	✓ 1987 to 2012 2013 to 2017 2017 forward	✓ 2008 forward
State estimates	✓	✓
Sub-state estimates	N/A	✓ 1-yr for pop > 65,000 5-yr for all geographic areas including All counties & Zip-code tabulation areas
Small sub-populations	N/A	✓

2020 Health Insurance Coverage Estimates on SHADAC's State Health Compare

- In absence of 2020 ACS data, SHADAC produced our 2020 state-level health insurance coverage estimates for State Health Compare using the CPS (statehealthcompare.shadac.org)
- State-level subpopulation breakdowns are available by age, poverty level, and health status
- Estimates are available for all states by total and for most states by subpopulation breakdown

SHADAC Resources

Visit StateHealthCompare.SHADAC.org

The screenshot shows the 'STATE HEALTH COMPARE' website. At the top, it says 'DATA ANALYZED BY SHADAC'. Below that, there are buttons for 'Explore Data' and 'About', and links for '< Share', 'Email', and 'Download Data'. A central message reads: 'Use State Health Compare to create customized reports for state-level health estimates' with an 'Explore the Data >' button. The main content area is titled 'Explore Data' and includes a checkbox for 'Show available breakdowns (Age, Education, Race/Ethnicity..)'. It lists various categories of health data, such as 'Health Insurance Coverage', 'Cost of Care - Dollars', 'Cost of Care - Behavior Changes', 'Health Behaviors', 'Outcomes', 'Access to Care', 'Utilization of Care', 'Quality of Care', 'Public Health', and 'Social and Economic Factors'.



ACCESS State-level estimates related to the Culture of Health and health care



DOWNLOAD customized reports and select data as an excel file



GENERATE detailed graphics, trend lines, maps, bar charts, and data tables.



SUBSCRIBE to SHADAC's e-newsletter to stay updated on the latest resources



FOLLOW us on Twitter @shadac

SHADAC's State Health Compare

- **50+ State-level measures of:**
 - Health Insurance Coverage
 - Cost of Care
 - Health Behaviors
 - Outcomes
 - Access to Care
 - Utilization of Care
 - Quality of Care
 - Public Health
 - Social and Economic Factors

Health Insurance Coverage	Access to Care
Coverage Type (2020)	Adults with No Personal Doctor
Coverage Type	No Trouble Finding Doctor
Workers in Establishments that Offer Coverage	Told that Provider Accepts Insurance
Cost of Care - Dollars	Had Usual Source of Medical Care
People with High Medical Care Cost Burden	Broadband Internet Access
Costs of Potentially Preventable Hospitalizations	Physicians Who Accept New Patients
Medical Out-of-Pocket Spending	Physicians Who Accept New Medicaid Patients
Average Annual ESI Premium	Utilization of Care
Average Annual ESI Deductible	Had General Doctor or Provider Visit
Employee Contributions to Premiums	Had Emergency Department Visit
High-Deductible Health Plans	Spent the Night in a Hospital
Medicaid Expenses as Percent of State Budget	Quality of Care
Cost of Care - Behavior Changes	Adult Cancer Screenings
Adults Who Forgo Needed Medical Care	Adult Potentially Preventable Hospitalizations
Made Changes to Medical Drugs	Child Potentially Preventable Hospitalizations
Trouble Paying Medical Bills	Adult Flu Vaccinations
Health Behaviors	Child Vaccinations
Adult Binge Drinking	Public Health
Adult Obesity	Weight Assessment in Schools
Adult Smoking	School Nutrition Standards Stronger than USDA
Adult E-Cigarette Use	Schools Required to Provide Physical Activity
High School Obesity	Smoke Free Campuses
High School Smoking	Cigarette Tax Rates
High School Physical Activity	Public Health Funding
Sales of Opioid Painkillers	Social and Economic Factors
Opioid-Related and Other Drug Poisoning Deaths	Children Considered to be Poor
Alcohol-Involved Deaths	Unemployment Rate
Outcomes	Income Inequality
Chronic Disease Prevalence	Unaffordable Rents
Activities Limited due to Health Difficulty	Adverse Childhood Experiences
Health Status	
Cancer Incidence	
Premature Death	
Adult Unhealthy Days	
Suicide Deaths	

18 Data Sources, including:

- American Community Survey (ACS)
- Current Population Survey (CPS)
- Behavioral Risk Factor Surveillance System (BRFSS)
- National Health Interview Survey (NHIS)
- National Survey for Children's Health (NSCH)
- Healthcare Cost and Utilization Project (HCUP)
- National Electronic Health Records Survey (NEHRS)



SHADAC's State Health Compare



Access Policy-relevant breakdowns available for most measures



Generate tables, maps, bar charts, trends, and state rankings



Margins of error in addition to point estimates allows for [significance testing](#)

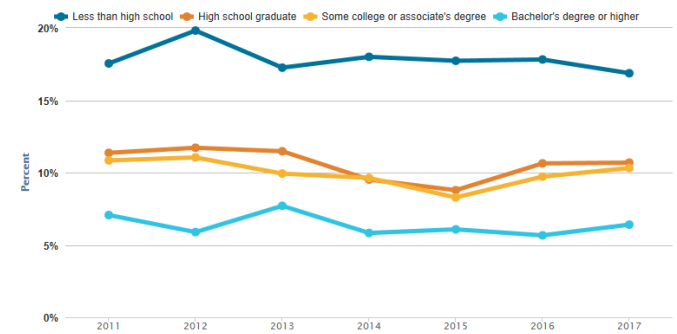


Data can be downloaded in spreadsheet format

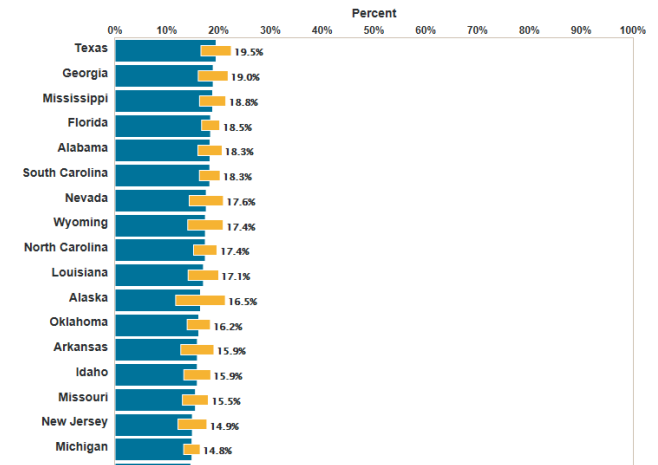
Hest, Robert. "Significance Testing Using State Health Compare." June 2020. SHADAC. Available at: www.shadac.org/publications/significance-testing-using-state-health-compare

Percent of adults who could not get medical care when needed due to cost

State: Minnesota
Education: All Selected
Timeframe: 2011 to 2017
Data Type: Percent



■ = Margin of Error





Virtual Tour

statehealthcompare.shadac.org/

Comparing Federal Government Surveys

2021 Report Forthcoming

ANNUAL RWJF BRIEF • OCTOBER 2019

Comparing Federal Government Surveys That Count the Uninsured: 2019

INTRODUCTION

Timely and accurate estimates of the number of people who do not have health insurance coverage are important for understanding trends in health insurance coverage and the impacts of policy changes that affect health insurance. This brief provides an annual update to comparisons of uninsurance estimates from four federal surveys¹⁻⁴:

- The American Community Survey (ACS)
- The Current Population Survey (CPS)
- The Medical Expenditure Panel Survey – Household Component (MEPS-HC)
- The National Health Interview Survey (NHIS)

In this brief, we present current and historical national estimates of uninsurance along with the most recent available state-level estimates from these surveys. We also discuss the main reasons for variation in the estimates across the different surveys.

National Estimates

Table 1 shows the most recent available estimates of uninsurance from each of the four surveys listed above. Some of the surveys produce estimates of the number of adults who were uninsured for an entire year, while others estimate uninsurance at a specific point in time (i.e., at the time of the survey), and some collect multiple measures of uninsurance.


Table 1. National Uninsurance Estimates from Four Federal Surveys: Total Population

Survey	Time Period	Uninsured for the Entire Year		Uninsured at a Specific Point in Time	
		Number (millions)	Percent of Population	Number (millions)	Percent of Population
ACS	2018	N/A	N/A	28.6	8.9
CPS	2018	27.5	8.5	N/A	N/A
MEPS	2017	21.5	6.6	N/A	N/A
NHIS	2018	17.3	5.3	30.4	9.4

Sources: CPS estimates from U.S. Census Bureau, 2019, "Health Insurance Coverage in the United States: 2018"; ACS estimates for civilian noninstitutionalized population from U.S. Census Bureau, 2019, "Health Insurance Coverage in the United States: 2018"; NHIS estimates from Cohen, Tarlitz and, Martinez, 2019, "Health Insurance Coverage: Early Release of Estimates from the National Health Interview Survey, 2018"; MEPS estimates from https://meps.ahrq.gov/mepsrends/hc_ins/.

¹See Appendix A for key information from each of these surveys, such as who is included in the survey, when and how the survey is conducted, response rates, and the availability of state-level insurance estimates.

²Another federal survey that provides estimates of the uninsured is the Behavioral Risk Factor Surveillance System (BRFSS), which provides uninsurance estimates for non-elderly adults (ages 18 to 64) nationally and among states. Details about the BRFSS are included in Appendix A, and estimates from the BRFSS are provided in Appendix B.



1

Effect of COVID on Survey-based Coverage Estimates

New SHADAC Brief and Blogs

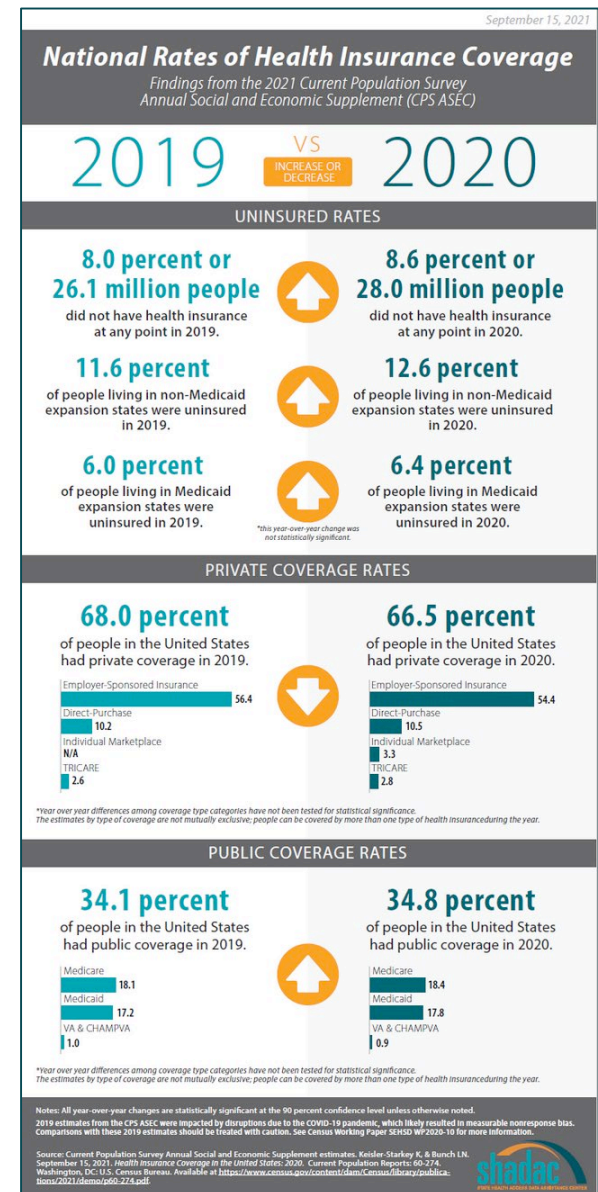
- [Changes in Federal Surveys Due to and During COVID-19 Brief \(Brief\)](#)
- [Current Population Survey \(CPS\) will Serve as Primary Source of 2020 State-level Data on Health Insurance \(Blog\)](#)
- [U.S. Census Bureau Analytic Report Shows Significant Non-Response Bias in the 2020 American Community Survey \(Blog\)](#)

The image shows the cover of a SHADAC brief titled "Changes in Federal Surveys Due to and During COVID-19". The cover features the SHADAC logo (State Health Access Data Assistance Center) and the Robert Wood Johnson Foundation logo. The date "AUGUST 2021" is printed in the top right corner. The main title is "Changes in Federal Surveys Due to and During COVID-19". Below the title, there are sections for "AUTHOR" (Andrea Stewart, Marketing and Communications Specialist, SHADAC), "SUMMARY" (This brief provides an overview of changes made to annual federal surveys due to the disruption of the coronavirus pandemic...), "Introduction" (While we already know that the COVID-19 pandemic has been the cause of major disruptions to the daily lives, work, education, and health among the United States and world populations...), "FEDERAL SURVEY QUICK LINKS" (American Community Survey, Current Population Survey, Medical Expenditure Panel Survey, National Health Interview Survey), "Methodological Changes", and "Survey Operations". The bottom of the cover includes the SHADAC logo and the text "State Health Access Data Assistance Center".

Changes in Coverage in 2020

New SHADAC Blogs and Infographic

- [2021 CPS ASEC: Fewer Americans Had Health Insurance Coverage in 2020 — Private Coverage Fell while Public Coverage Rose \(Blog and Infographic\)](#)
- [Current Population Survey Shows 2020 National Uninsured Rate Stable, Rising in Three States \(Blog\)](#)



MN Population Center Releases (IPUMS)

- ACS microdata is currently available through 2019; CPS ASEC microdata available through 2021
- 2020 1-Year ACS microdata will be available in the coming months
- SHADAC Health Insurance Unit (HIU) and Federal Poverty Guidelines (FPG) variables for CPS and ACS are or will be available through IPUMS
- <http://www.ipums.org>



Question & Answer



Mark Klee

Sharon Stern

Laryssa Mykyta

Nicole S. Scanniello



Robert Hest

Kathleen Call

***Please submit question using the chat box
or Tweet questions to @SHADAC.***

Thank you!

Please email shadac@umn.edu
with any follow-up questions.

Visit our website at
www.shadac.org

And follow us on twitter @SHADAC

